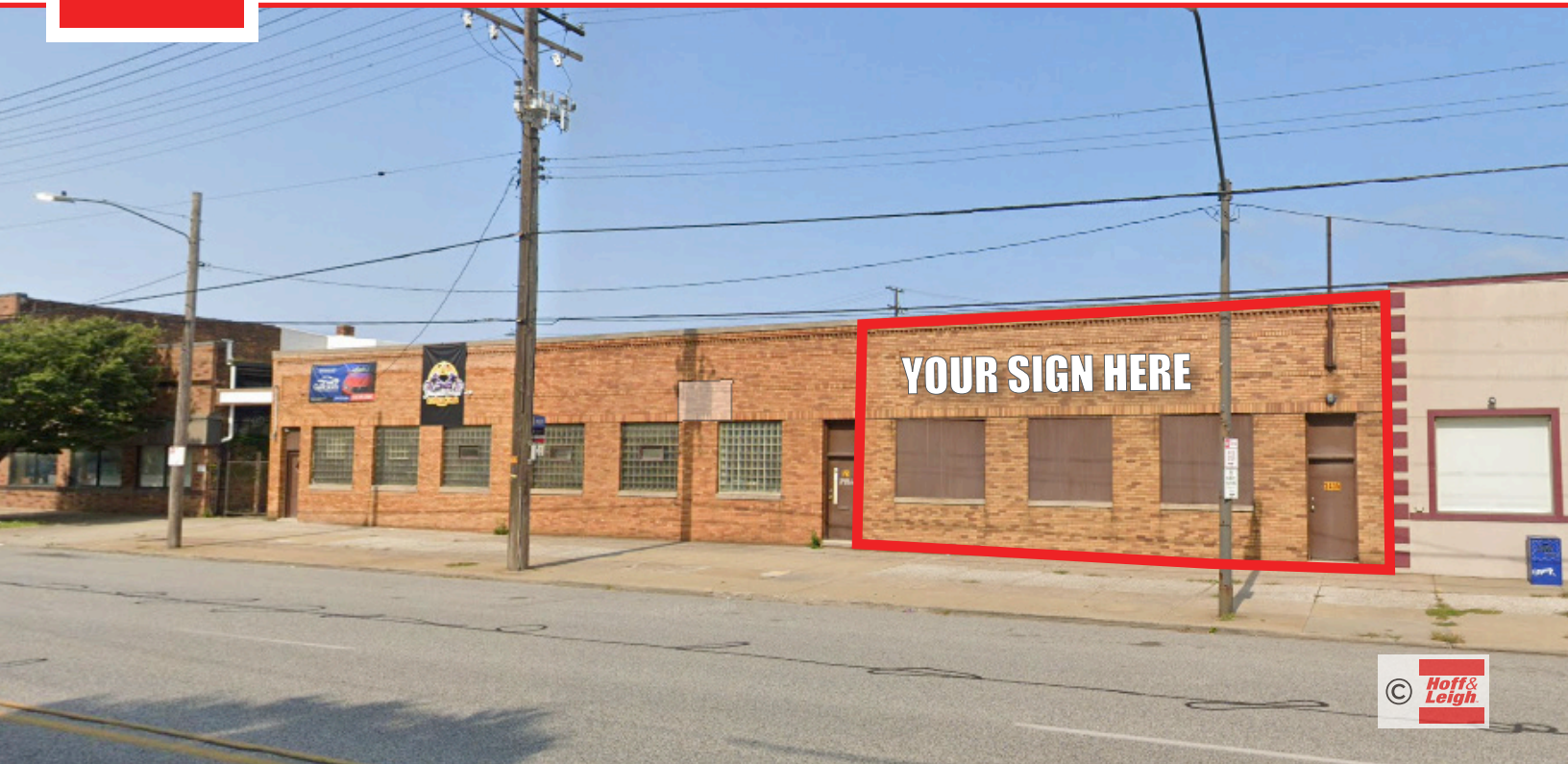


Warehouse Space for Lease

2435 ST CLAIR AVE NE, CLEVELAND, OHIO 44114-4019



Overview

Enjoy a prime location in the heart of the downtown commercial district on St. Clair Avenue. This clean, secure, and professionally maintained space offers convenient access, excellent visibility, and a strong business presence surrounded by established retailers, offices, and local amenities. There are currently no restrooms within the space, plumbing is already in place to accommodate future installation. The property is immediately available for lease and is an ideal setting for office, professional, retail, or service-based users seeking a central downtown location.

Highlights

- Oversized 14ft Drive-In
- 15' Clear Height

Property Details

Lease Rate

- \$2,600 / Month (Full Service)

Zoning

- Light Industrial

Rev: June 17, 2026



Warehouse Space for Lease

2435 ST CLAIR AVE NE, CLEVELAND, OHIO 44114-4019



Rev: June 17, 2026



Our Network Is Your Edge

All information is from sources deemed reliable and is subject to errors, omissions, change of price, rental, prior sale, and withdrawal without notice. Prospect should carefully verify each item of information contained herein.

Joe Zumpano
C: 330.990.0847
O: 330.940.9360
JZumpano@HoffLeigh.com

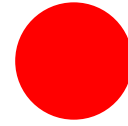
Warehouse Space for Lease

2435 ST CLAIR AVE NE, CLEVELAND, OHIO 44114-4019

DEMOGRAPHICS



69,747
Population



33.3
Median Age



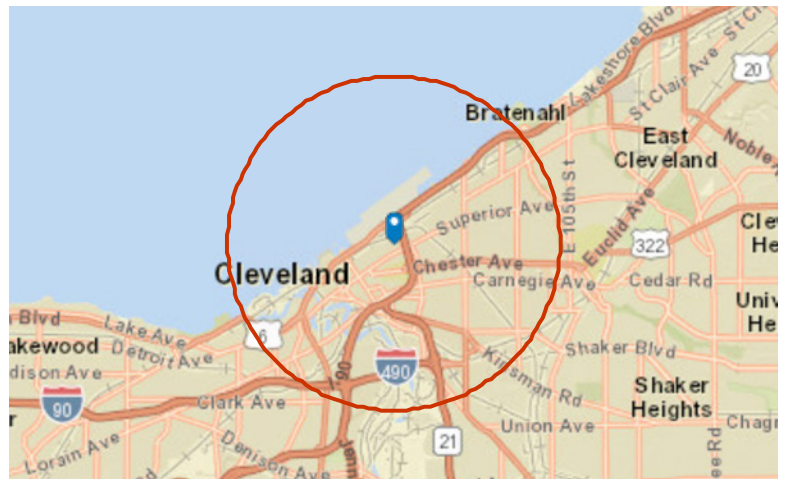
1.8
Average Household Size



\$42,936
Median Household Income

TRAFFIC COUNT

Nearest Cross Street	VPD	Distance (mi)
E 26th St	832	0.1
E 25th St	12,150	0.1
E 24th St	8,300	0.1
Krause Ct	1,900	0.1
Packard Ct	4,100	0.1



Rev: June 17, 2026



Our Network Is Your Edge

All information is from sources deemed reliable and is subject to errors, omissions, change of price, rental, prior sale, and withdrawal without notice. Prospect should carefully verify each item of information contained herein.

Joe Zumpano
C: 330.990.0847
O: 330.940.9360
JZumpano@HoffLeigh.com

Warehouse Space for Lease

2435 ST CLAIR AVE NE, CLEVELAND, OHIO 44114-4019



Rev: June 17, 2026