

Recently Renovated Condo For Lease

1001 S PERRY STREET #105B, CASTLE ROCK, COLORADO 80104



Overview

Recently renovated office condo would work great for a variety of small businesses including therapists and estheticians.

Unit:	Size:	Lease Rate:
105B	784 SF	\$1,895/Month (MG)

Highlights

- Updated Office Condo with Exterior Entrance
- 3 Private Offices + Reception/Waiting Area
- Wood-look LVP Flooring Throughout
- No NNN or CAM add-ons!
- Utilities Included in Lease Rate
- Close to Downtown and a Half-Mile from I-25/Plum Creek

Property Details

Lease Rate

- \$1,895.00/Month (MG)

Space Available

- 784 SF

Zoning

- Commercial

Rev: May 4, 2026



Our Network Is Your Edge

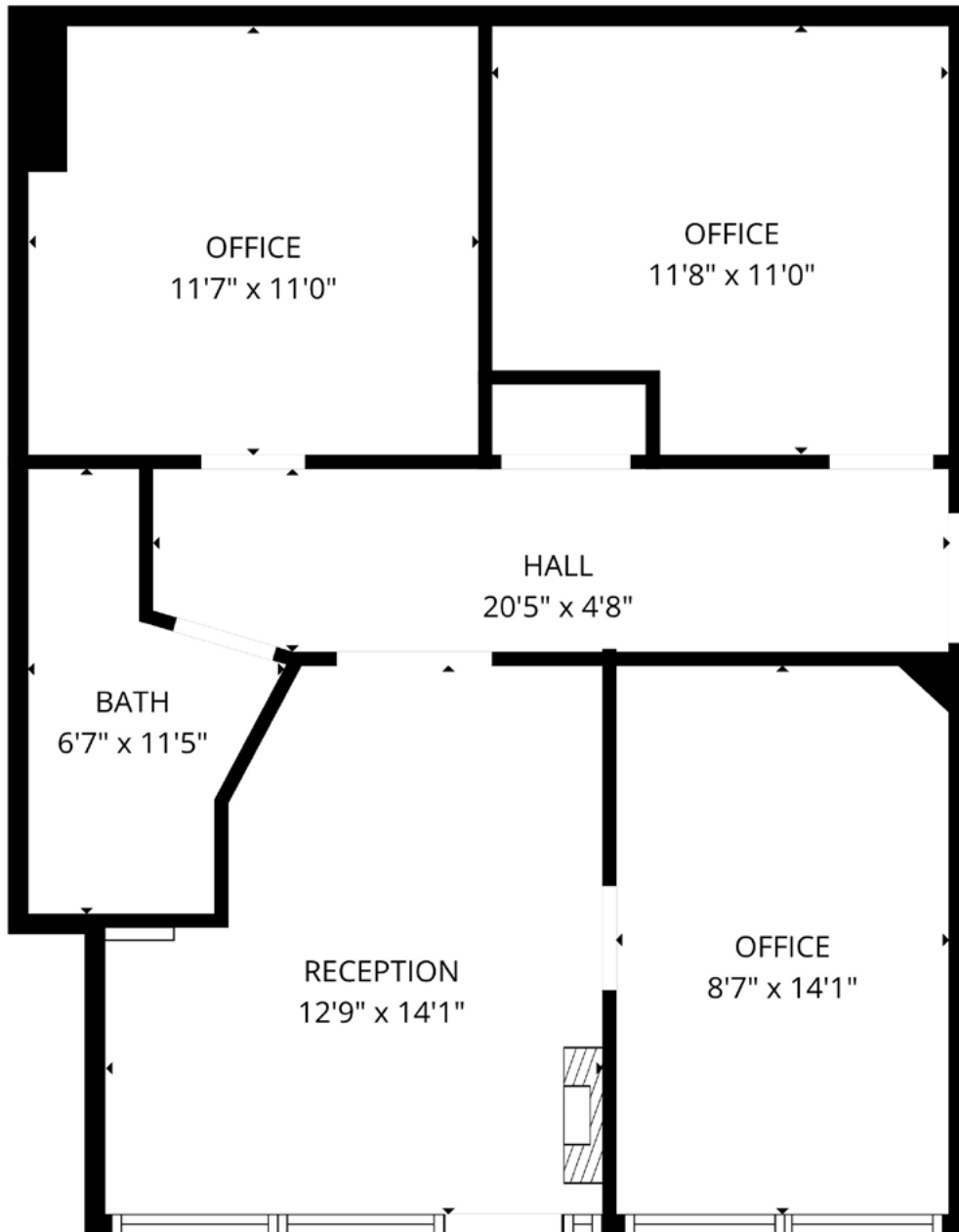
All information is from sources deemed reliable and is subject to errors, omissions, change of price, rental, prior sale, and withdrawal without notice. Prospect should carefully verify each item of information contained herein.



Brett Ogden
C: 719.237.1714
O: 719.630.2277
BOgden@HoffLeigh.com

Recently Renovated Condo For Lease

1001 S PERRY STREET #105B, CASTLE ROCK, COLORADO 80104



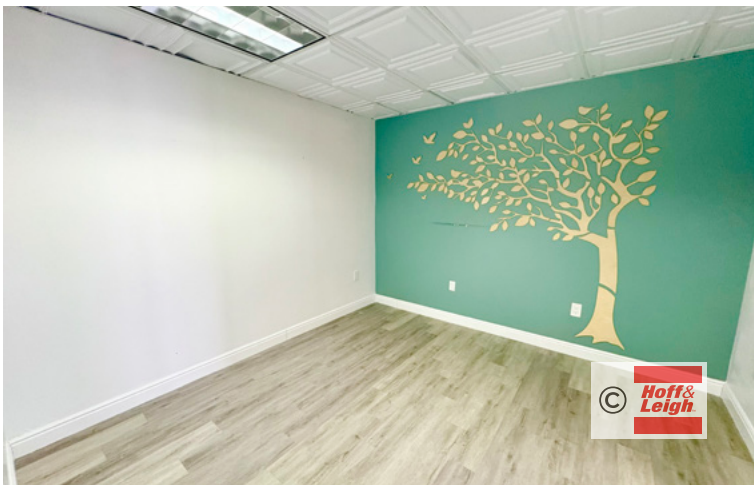
FLOOR PLAN CREATED BY CUBICASA APP. MEASUREMENTS DEEMED HIGHLY RELIABLE BUT NOT GUARANTEED.

Rev: May 4, 2026



Recently Renovated Condo For Lease

1001 S PERRY STREET #105B, CASTLE ROCK, COLORADO 80104



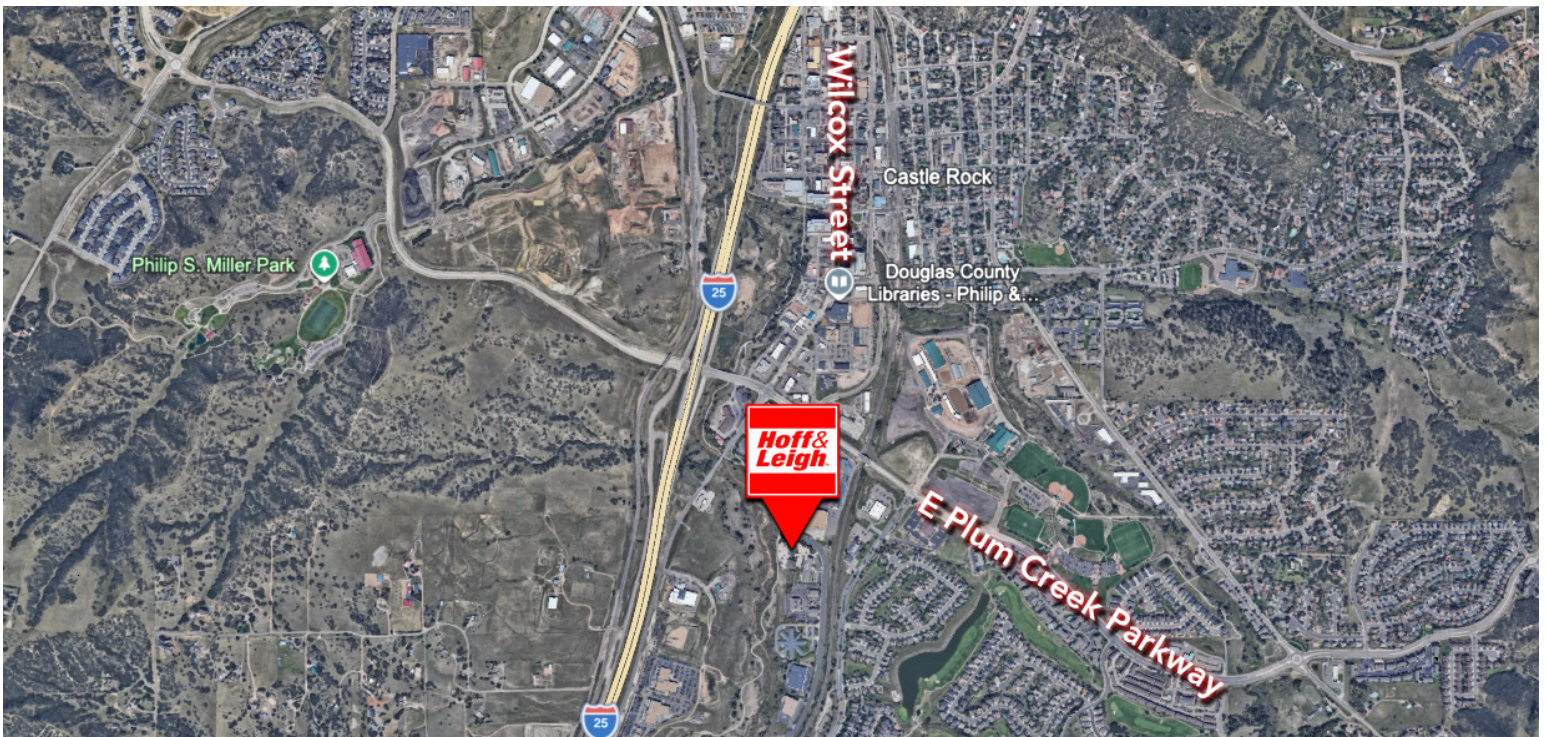
Rev: May 4, 2026





Recently Renovated Condo For Lease

1001 S PERRY STREET #105B, CASTLE ROCK, COLORADO 80104



Rev: May 4, 2026



Our Network Is Your Edge

All information is from sources deemed reliable and is subject to errors, omissions, change of price, rental, prior sale, and withdrawal without notice. Prospect should carefully verify each item of information contained herein.



Brett Ogden
C: 719.237.1714
O: 719.630.2277
BOgden@HoffLeigh.com