

# Newly Renovated Industrial Warehouse with Yard!

415 JUANITA STREET, COLORADO SPRINGS, COLORADO 80909



## Overview

415 Juanita Street offers a well-balanced mix of warehouse/shop space and finished office/showroom in a central Colorado Springs location. The property features an open warehouse layout with multiple work areas, built-in workbenches, and a drive-in overhead door for easy loading and functionality.

The front portion of the building has been nicely finished with modern office/showroom space, including upgraded flooring, recessed lighting, and a clean, professional layout suitable for client-facing use. This creates an ideal setup for contractors, fabricators, or service-based businesses needing both operational and customer-facing space.

Additional highlights include on-site parking in the front, a fenced yard area for outdoor storage, and flexible interior space that can be adapted to a variety of industrial or service uses.

## Highlights

- On-site parking
- Renovated building
- Fenced yard
- Roof replaced 2021 (50yr Warranty)
- Flexible "LI" zoning
- For Sale or For Lease
- Central Location
- Flexible Floor Plan

## Property Details

### Sales Price

- \$699,000

### Lease Rate

- Please Call

### Building Size

- 5,280 SF

### Year Built | Renovated

- 1955 | 2019

### Lot Size

- 0.26 Acres

### Zoning

- LI - Light Industrial

Rev: April 22, 2026



### Our Network Is Your Edge

All information is from sources deemed reliable and is subject to errors, omissions, change of price, rental, prior sale, and withdrawal without notice. Prospect should carefully verify each item of information contained herein.



### Brandon Langiewicz, SIOR

C: 715.512.0265

O: 720.572.5187

Brandon@HoffLeigh.com



### Chris Myers

C: 719.650.4627

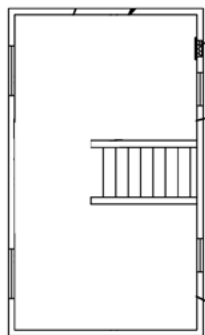
O: 719.630.2277

CMyers@HoffLeigh.com

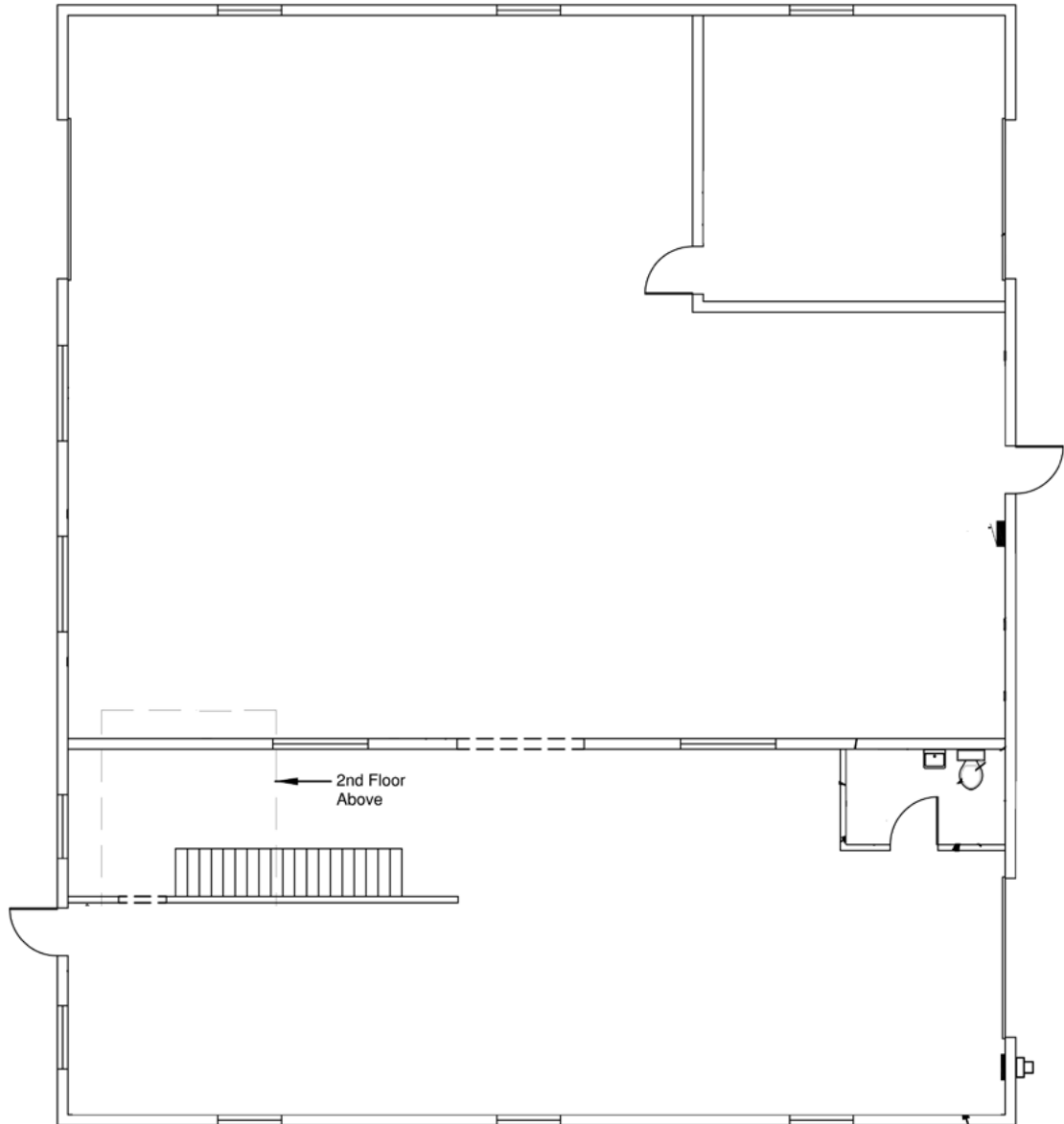


# Newly Renovated Industrial Warehouse with Yard!

415 JUANITA STREET, COLORADO SPRINGS, COLORADO 80909



2nd Flr OFFICE



Rev: April 22, 2026



## Our Network Is Your Edge

All information is from sources deemed reliable and is subject to errors, omissions, change of price, rental, prior sale, and withdrawal without notice. Prospect should carefully verify each item of information contained herein.



### Brandon Langiewicz, SIOR

C: 715.512.0265

O: 720.572.5187

Brandon@HoffLeigh.com



### Chris Myers

C: 719.650.4627

O: 719.630.2277

CMyers@HoffLeigh.com



# Newly Renovated Industrial Warehouse with Yard!

415 JUANITA STREET, COLORADO SPRINGS, COLORADO 80909



Rev: April 22, 2026



## Our Network Is Your Edge

All information is from sources deemed reliable and is subject to errors, omissions, change of price, rental, prior sale, and withdrawal without notice. Prospect should carefully verify each item of information contained herein.



## Brandon Langiewicz, SIOR

C: 715.512.0265

O: 720.572.5187

Brandon@HoffLeigh.com



## Chris Myers

C: 719.650.4627

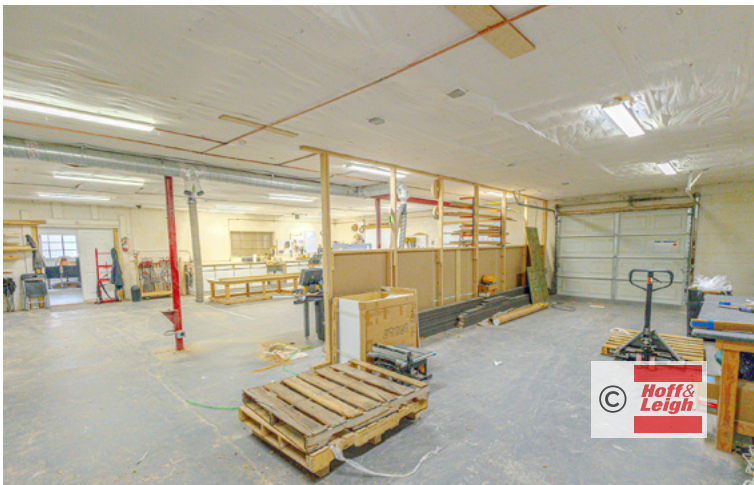
O: 719.630.2277

CMyers@HoffLeigh.com



# Newly Renovated Industrial Warehouse with Yard!

415 JUANITA STREET, COLORADO SPRINGS, COLORADO 80909



Rev: April 22, 2026



## Our Network Is Your Edge

All information is from sources deemed reliable and is subject to errors, omissions, change of price, rental, prior sale, and withdrawal without notice. Prospect should carefully verify each item of information contained herein.



## Brandon Langiewicz, SIOR

C: 715.512.0265

O: 720.572.5187

Brandon@HoffLeigh.com



## Chris Myers

C: 719.650.4627

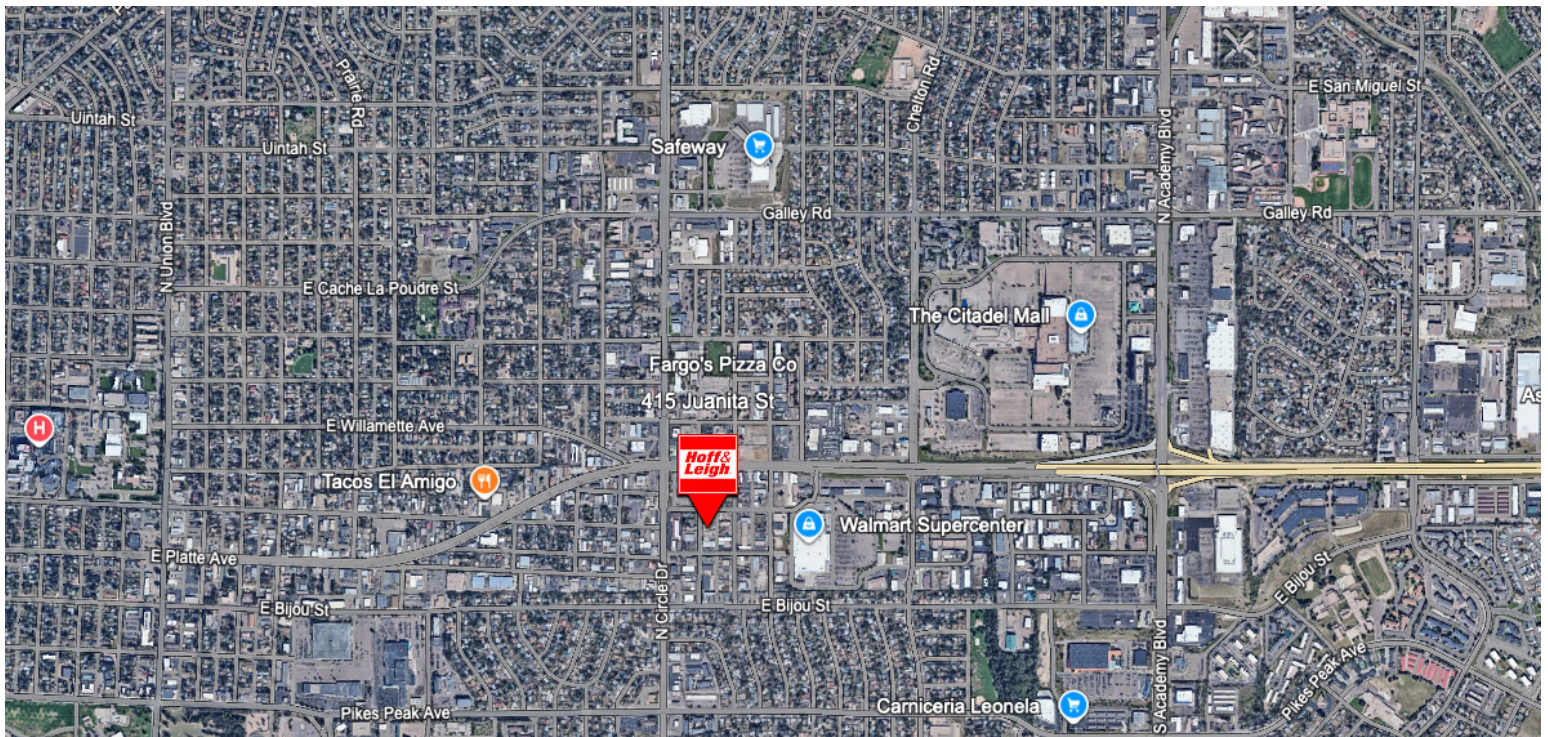
O: 719.630.2277

CMyers@HoffLeigh.com



# Newly Renovated Industrial Warehouse with Yard!

415 JUANITA STREET, COLORADO SPRINGS, COLORADO 80909



Rev: April 22, 2026



## Our Network Is Your Edge

All information is from sources deemed reliable and is subject to errors, omissions, change of price, rental, prior sale, and withdrawal without notice. Prospect should carefully verify each item of information contained herein.



### Brandon Langiewicz, SIOR

C: 715.512.0265

O: 720.572.5187

Brandon@HoffLeigh.com



### Chris Myers

C: 719.650.4627

O: 719.630.2277

CMyers@HoffLeigh.com