

# Garage/Storage Space For Lease

841 WALES DRIVE, HARTVILLE, OHIO 44632



## Overview

Newly constructed and thoughtfully designed, this versatile property offers 860 SF of premium garage bay space tailored for both convenience and security. Featuring a 12' x 14' overhead garage door, the space easily accommodates large vehicles and equipment, making it ideal for storing RVs, boats, trailers, work trucks, or recreational gear.

Equipped with both heat and electric, the garage provides year-round functionality — perfect for storage, workshop use, or equipment maintenance. The interior is clean, well-finished, and designed for durability, offering a professional-grade environment suited for personal or business needs.

Located in a secluded setting, this property ensures privacy and peace of mind. Secure access via a door passcode system adds an extra layer of protection, making it a reliable solution for valuable assets. Whether you're seeking dependable storage, workspace flexibility, or a secure location for large equipment, this property delivers practicality, security, and modern construction in one exceptional package.

## Highlights

- Newly Constructed
- Secure Passcode Door Lock
- Secluded
- Heated
- 12 x 14 Overhead Garage Door
- Includes Common Area Restroom

Unit:	Size:	Lease Rate:
1	860 SF	LEASED
2	860 SF	\$750 / Month (Plus Utilities)
3	860 SF	\$750 / Month (Plus Utilities)
4	860 SF	\$750 / Month (Plus Utilities)
5	860 SF	\$750 / Month (Plus Utilities)
6	860 SF	LEASED

Rev: April 1, 2026



# Garage/Storage Space For Lease

841 WALES DRIVE, HARTVILLE, OHIO 44632



Rev: April 1, 2026



## Our Network Is Your Edge

All information is from sources deemed reliable and is subject to errors, omissions, change of price, rental, prior sale, and withdrawal without notice. Prospect should carefully verify each item of information contained herein.

## Jake Davis

C: 330.573.8590

O: 330.940.9360

Jake@HoffLeigh.com

## Jeff Davis

C: 330.351.5202

O: 330.940.9360

JDavis@HoffLeigh.com

# Garage/Storage Space For Lease

841 WALES DRIVE, HARTVILLE, OHIO 44632

## DEMOGRAPHICS



13,352  
Population



44.1  
Median Age



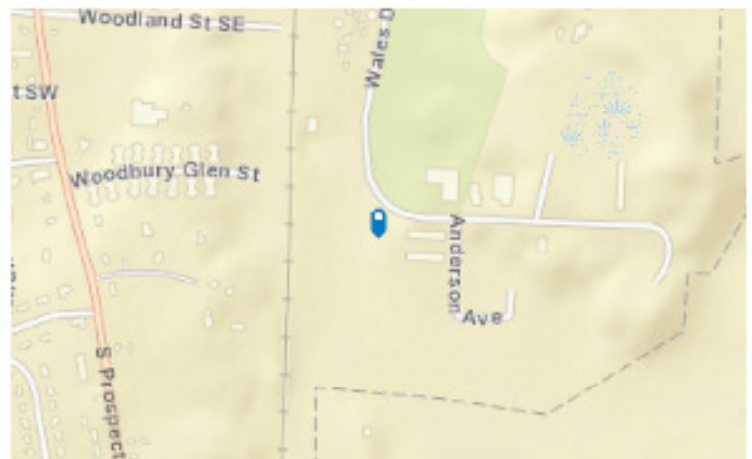
2.6  
Average  
Household Size



\$92,731  
Median Household  
Income

## TRAFFIC COUNT

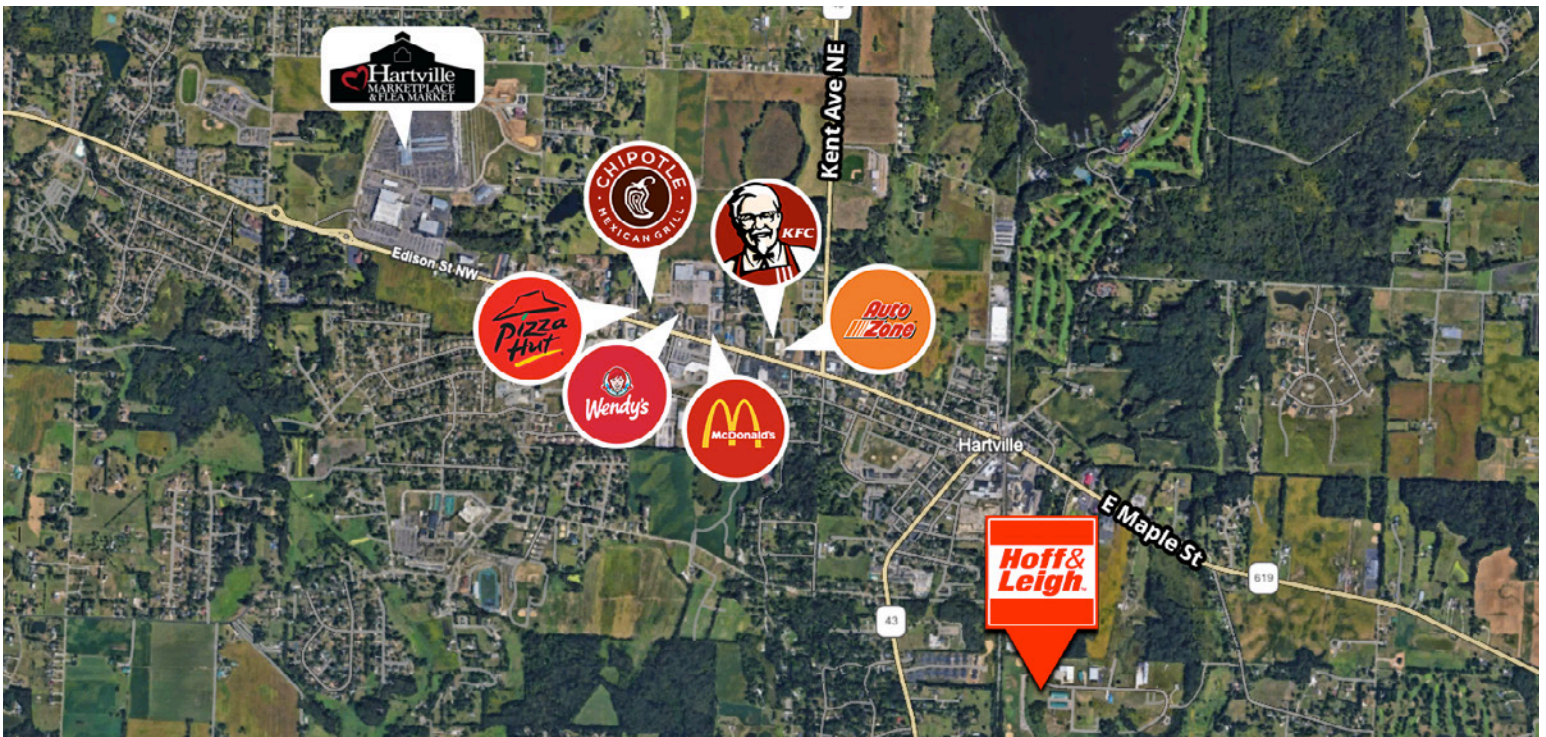
Nearest Cross Street	VPD	Distance (mi)
Seneca Trl SE	5,700	0.4
E Maple St	11,210	0.6
Lincoln St	6,116	0.6
High St NE	5,712	0.7
William Penn Ave NE	5,258	0.8



Rev: April 1, 2026

# Garage/Storage Space For Lease

841 WALES DRIVE, HARTVILLE, OHIO 44632



Rev: April 1, 2026

### Our Network Is Your Edge

All information is from sources deemed reliable and is subject to errors, omissions, change of price, rental, prior sale, and withdrawal without notice. Prospect should carefully verify each item of information contained herein.

### Jake Davis

C: 330.573.8590

O: 330.940.9360

Jake@HoffLeigh.com

### Jeff Davis

C: 330.351.5202

O: 330.940.9360

JDavis@HoffLeigh.com