

Office Space For Lease

3535 S SMITH ROAD, FAIRLAWN, OHIO 44333



Overview

Hoff & Leigh is offering this well-located 2,000 square foot office space situated in a highly desirable and professional area. This versatile suite offers an ideal layout for a wide range of businesses, combining functionality, comfort, and convenience.

The space features a welcoming reception area, multiple private offices, and an open workspace that can easily accommodate collaborative teams or workstations. Large windows provide abundant natural light, creating a bright and productive environment throughout the day.

The property offers easy access to major roads, nearby retail, dining, and professional services. Ample on-site parking ensures convenience for both employees and visitors.

This professional office suite is ideal for companies looking to establish or expand their presence in a well-maintained, sought-after business location. Flexible layout options allow the space to be tailored to suit a variety of professional uses. For additional information contact Ed Jesson or Craig DeLorenzo at 330-940-9360.

Highlights

- Prime location in a desirable business area
- Ample Parking
- Convenient access to major roads, retail, and dining

Property Details

Lease Rate

- \$15.00 SF/YR (MG)

Building Size

- 2,000 SF

Space Available

- 2,000 SF

Rev: March 17, 2026



Our Network Is Your Edge

All information is from sources deemed reliable and is subject to errors, omissions, change of price, rental, prior sale, and withdrawal without notice. Prospect should carefully verify each item of information contained herein.

Ed Jesson

C: 330.760.4494

O: 330.940.9360

Ejesson@HoffLeigh.com

Craig DeLorenzo

C: 330.620.0799

O: 330.940.9360

CDeLorenzo@HoffLeigh.com



Office Space For Lease

3535 S SMITH ROAD, FAIRLAWN, OHIO 44333



Rev: March 17, 2026



Our Network Is Your Edge

All information is from sources deemed reliable and is subject to errors, omissions, change of price, rental, prior sale, and withdrawal without notice. Prospect should carefully verify each item of information contained herein.

Ed Jesson

C: 330.760.4494

O: 330.940.9360

Ejesson@HoffLeigh.com

Craig DeLorenzo

C: 330.620.0799

O: 330.940.9360

CDeLorenzo@HoffLeigh.com

Office Space For Lease

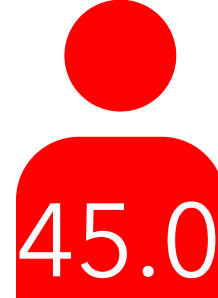
3535 S SMITH ROAD, FAIRLAWN, OHIO 44333

3535 S Smith Rd, Fairlawn, Ohio, 44333 2

DEMOGRAPHICS



37,030
Population



45.0
Median Age



2.3
Average Household Size



\$115,193
Median Household Income

TRAFFIC COUNT

Nearest Cross Street	VPD	Distance (mi)
S Smith Rd	28,962	0.2
Hickory Rd	10,537	0.2
Morewood Rd	20,310	0.4
Bywood Ave	18,102	0.6
Sand Run Pkwy	9,403	0.6



Rev: March 17, 2026



Our Network Is Your Edge

All information is from sources deemed reliable and is subject to errors, omissions, change of price, rental, prior sale, and withdrawal without notice. Prospect should carefully verify each item of information contained herein.

Ed Jesson

C: 330.760.4494
O: 330.940.9360
Ejesson@HoffLeigh.com

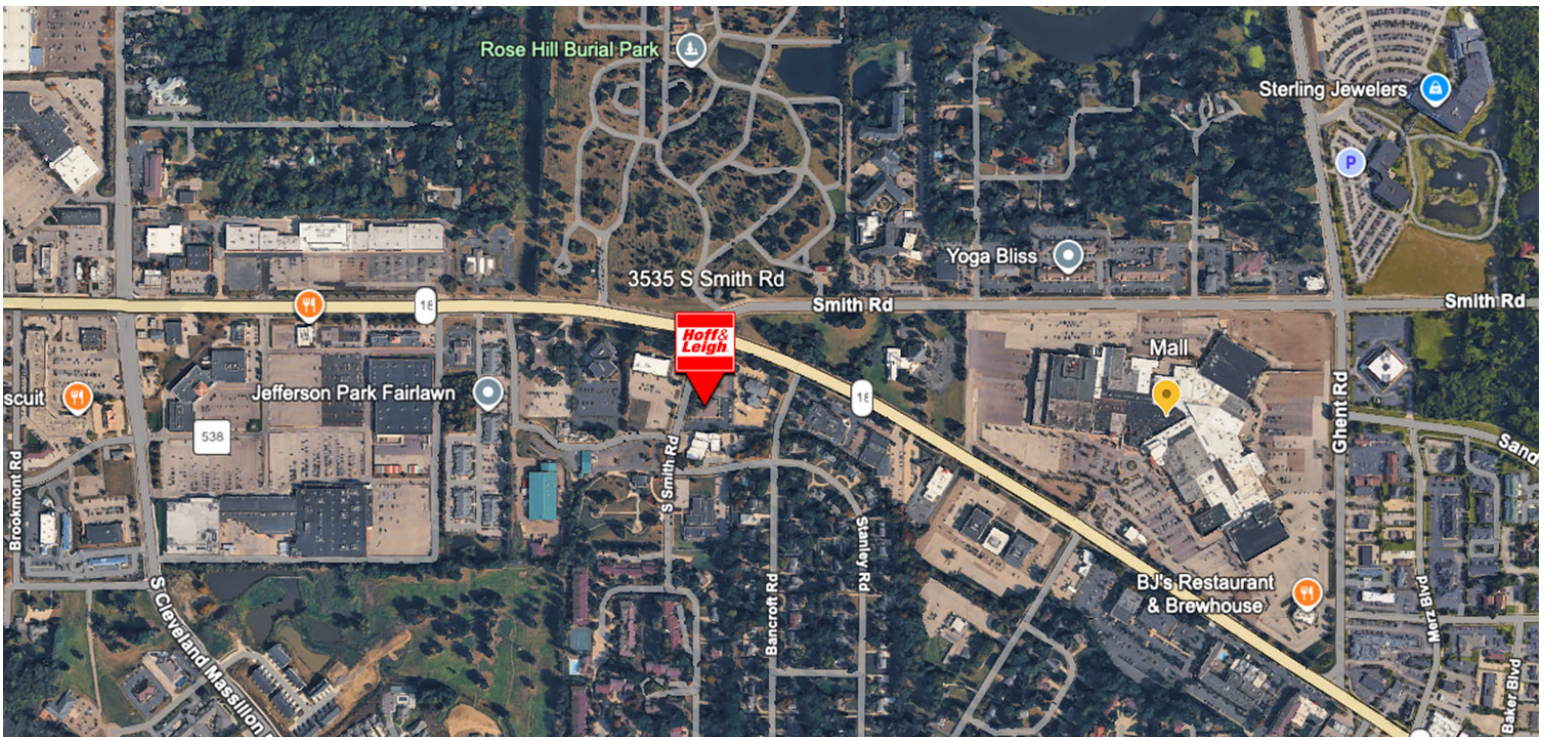
Craig DeLorenzo

C: 330.620.0799
O: 330.940.9360
CDeLorenzo@HoffLeigh.com



Office Space For Lease

3535 S SMITH ROAD, FAIRLAWN, OHIO 44333



Rev: March 17, 2026



Our Network Is Your Edge

All information is from sources deemed reliable and is subject to errors, omissions, change of price, rental, prior sale, and withdrawal without notice. Prospect should carefully verify each item of information contained herein.

Ed Jesson

C: 330.760.4494

O: 330.940.9360

EJesson@HoffLeigh.com

Craig DeLorenzo

C: 330.620.0799

O: 330.940.9360

CDeLorenzo@HoffLeigh.com