

# Retail/Flex Space For Lease

6126 NORWALK ROAD, MEDINA, OHIO 44256



## Overview

Excellent opportunity for a retail facing flex space with frontage on Norwalk Road. Features 16' clear height, 36' x 50' dimension, large front facing windows for strong retail presence, rear gated storage with access control and video surveillance. This building has a water hookup, utility sink, restroom, climate control, overhead electric outlets and more! Ideal for contractors, dealerships, and showrooms. This well maintained property will give you peace of mind so you can focus on your business without worrying about pop up costs, security, or maintenance.

Contact Cole Kroneker to see inside the space!

## Highlights

- Insulated, Overhead Electric Outlets, Restroom, Water Hookup, Utility sink, Polished Floor, Climate Controlled, and Rear Security Gate for storage overflow
- Excellent Signage Opportunity on Rt 57
- Easy vehicle circulation for work vehicles and daily service traffic.

## Property Details

### Lease Rate

- \$1,900 / Month (Plus Utilities)

Rev: April 3, 2026



# Retail/Flex Space For Lease

6126 NORWALK ROAD, MEDINA, OHIO 44256



Rev: April 3, 2026



## Our Network Is Your Edge

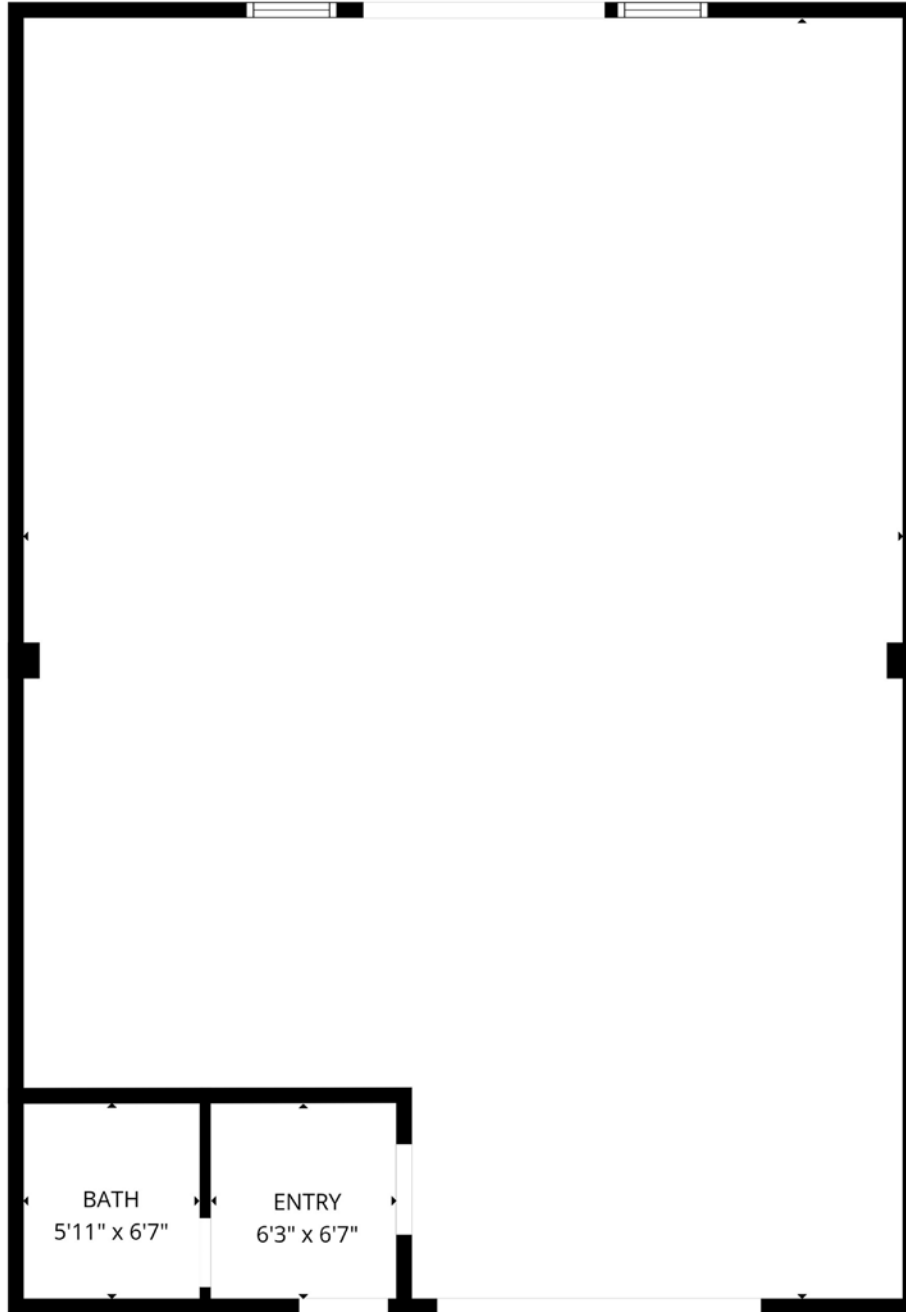
All information is from sources deemed reliable and is subject to errors, omissions, change of price, rental, prior sale, and withdrawal without notice. Prospect should carefully verify each item of information contained herein.

**Cole Kroneker**  
C: 216.302.4338  
O: 330.940.9360  
CKroneker@HoffLeigh.com



# Retail/Flex Space For Lease

6126 NORWALK ROAD, MEDINA, OHIO 44256



Rev: April 3, 2026



## Our Network Is Your Edge

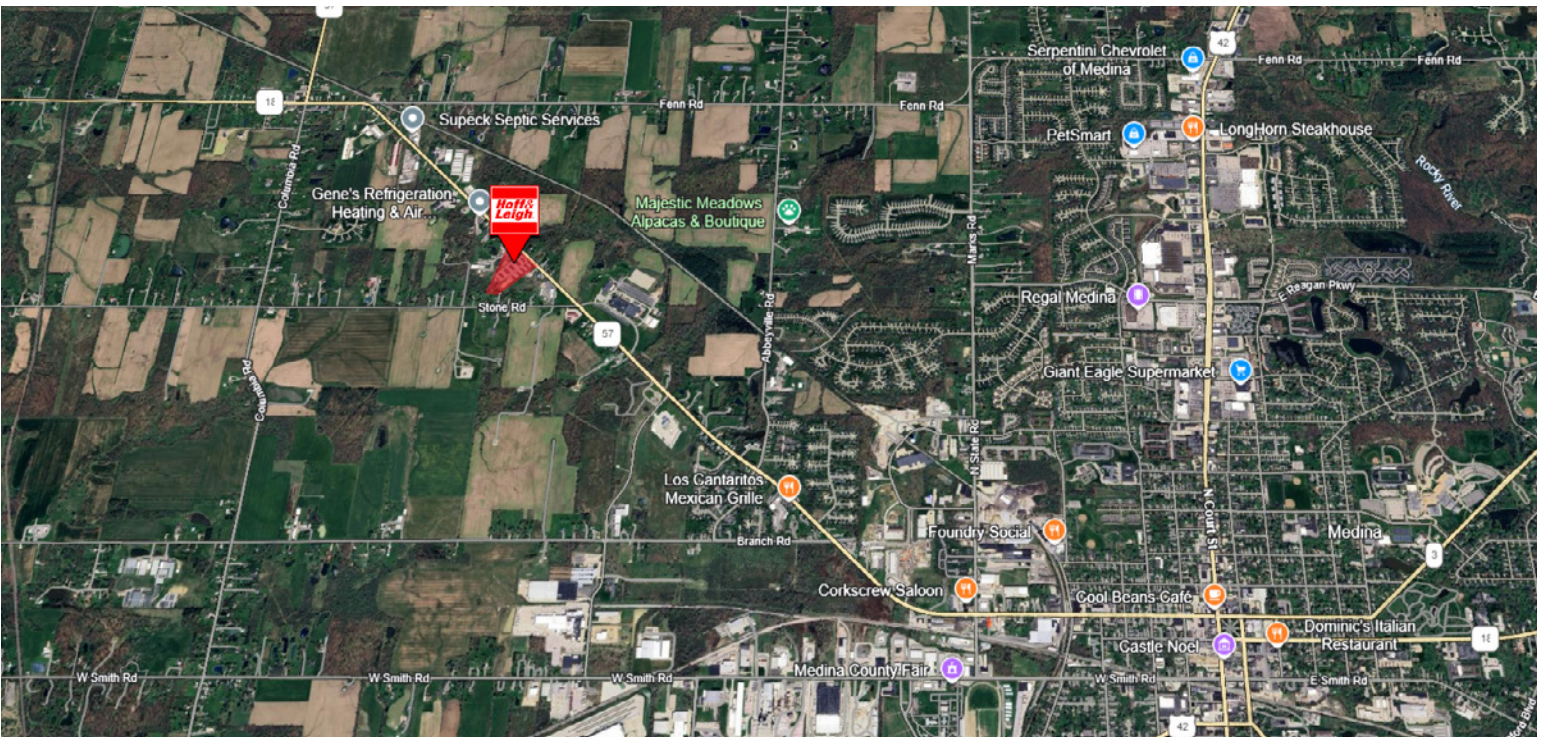
All information is from sources deemed reliable and is subject to errors, omissions, change of price, rental, prior sale, and withdrawal without notice. Prospect should carefully verify each item of information contained herein.

**Cole Kroneker**  
C: 216.302.4338  
O: 330.940.9360  
CKroneker@HoffLeigh.com



# Retail/Flex Space For Lease

6126 NORWALK ROAD, MEDINA, OHIO 44256



Rev: April 3, 2026



## Our Network Is Your Edge

All information is from sources deemed reliable and is subject to errors, omissions, change of price, rental, prior sale, and withdrawal without notice. Prospect should carefully verify each item of information contained herein.

**Cole Kroneker**  
C: 216.302.4338  
O: 330.940.9360  
CKroneker@HoffLeigh.com