

Industrial Space For Lease

717 SEEDLING COURT, COLORADO SPRINGS, COLORADO 80915



Overview

This modern concrete block building constructed in 2019 is well positioned in the southeastern part of town near Peterson AFB and could be the perfect location for your business.

Located at the end of a cul-de-sac in a quiet industrial area, this 2-tenant facility sits on 0.9 acres and offers a total of 5,200 SF of interior space.

Parking

There are 14 parking spaces at the front of the building which are available to both tenants.

Yard Space

A private, fenced yard on the east side (approximately 60' x 150') provides secure space for outdoor storage and parking.

Warehouse

14' x 14' overhead drive-in door provides direct access to the 3,700 SF warehouse area, which features a 17' clear height.

Electrical

The space is equipped with 400-Amp, 120/208-Volt, 3-Phase electrical service and is well-suited for mid-size industrial and warehouse needs.

Office

The front of the building includes 1,500 SF of professional office space, complete with a reception area, break room, and 5 private offices.

Contact us today to schedule a tour!

Highlights

- Fenced yard
- 17' clear height
- 14'x14' drive-in door

Property Details

Lease Rate

- \$13.00/SF/YR (NNN)

Space Available

- 5,200 SF

Building Size

- 10,400 SF

Lot Size

- 0.914 Acres

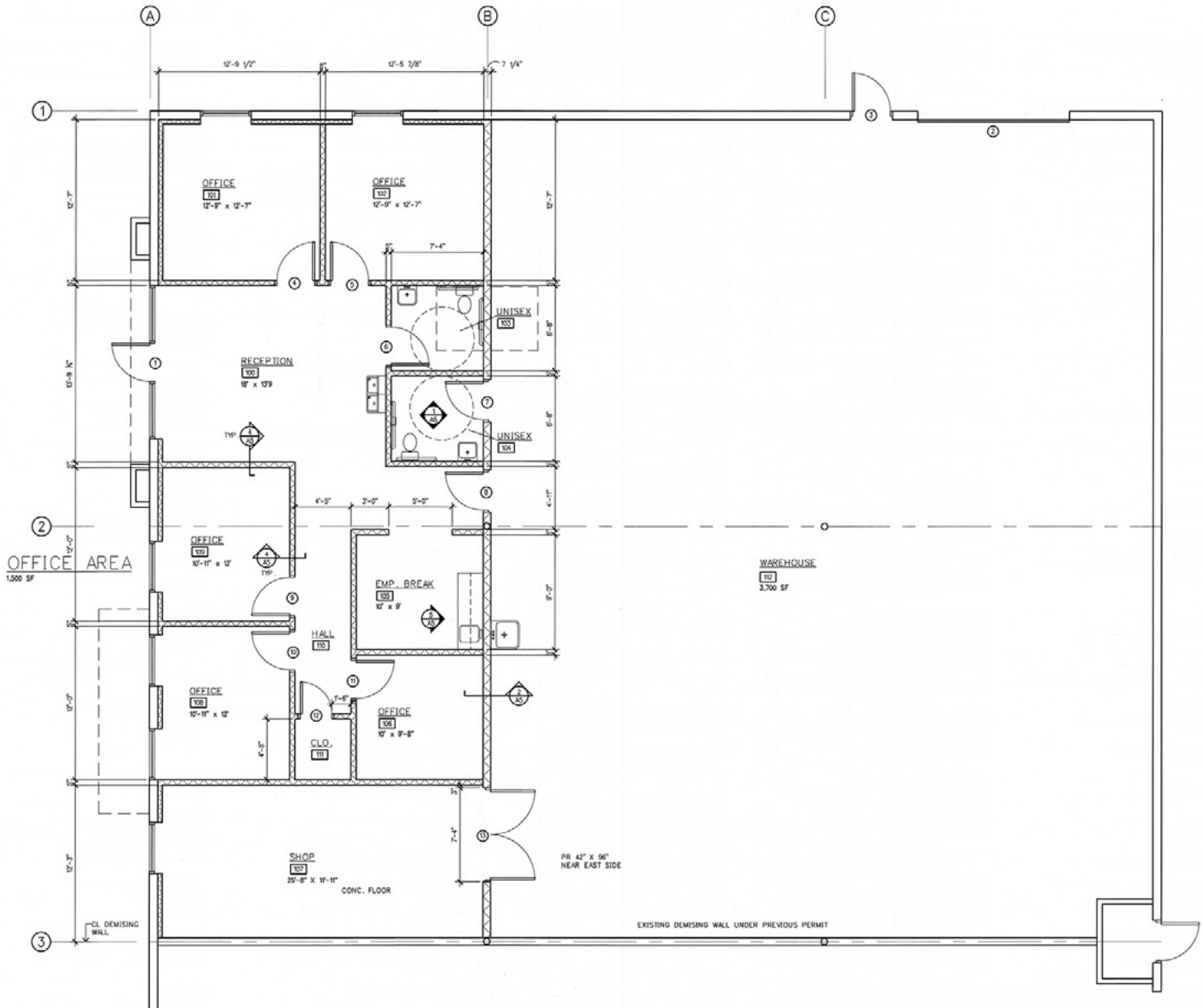
Zoning

- BP

Rev: January 15, 2026

Industrial Space For Lease

717 SEEDLING COURT, COLORADO SPRINGS, COLORADO 80915





Industrial Space For Lease

717 SEEDLING COURT, COLORADO SPRINGS, COLORADO 80915



Rev: January 15, 2026



Our Network Is Your Edge

All information is from sources deemed reliable and is subject to errors, omissions, change of price, rental, prior sale, and withdrawal without notice. Prospect should carefully verify each item of information contained herein.

Holly Trinidad

C: 719.337.0999

O: 719.630.2277

Holly@HoffLeigh.com

Klete Keller

C: 719.428.8683

O: 719.630.2277

Keller@HoffLeigh.com

Kenny Juarbe

C: 719.237.6065

O: 719.630.2277

Kjuarbe@HoffLeigh.com



Industrial Space For Lease

717 SEEDLING COURT, COLORADO SPRINGS, COLORADO 80915



Rev: January 15, 2026



Our Network Is Your Edge

All information is from sources deemed reliable and is subject to errors, omissions, change of price, rental, prior sale, and withdrawal without notice. Prospect should carefully verify each item of information contained herein.

Holly Trinidad

C: 719.337.0999

O: 719.630.2277

Holly@HoffLeigh.com

Klete Keller

C: 719.428.8683

O: 719.630.2277

Keller@HoffLeigh.com

Kenny Juarbe

C: 719.237.6065

O: 719.630.2277

Kjuarbe@HoffLeigh.com