

# Residential Property For Sale

222 FAIRFIELD ROAD, PAINESVILLE, OHIO 44077



## Overview

**FOR SALE!** This well maintained home is situated on 1.09 acres of land and features 2,038 SF of living space, 4 bedrooms, 2.5 bathrooms, a fireplace, 2 car garage, updated HVAC, and a partially finished basement. Located in Painesville Township within the Cherry Farm Subdivision.

## Highlights

- 2,038 SF
- 4 Bedrooms
- 2.5 Bathrooms
- Central A/C
- Fireplace
- Riverside Local School District

## Property Details



**Sales Price**  
\$340,000



**Building Size**  
2,038 SF



**Lot Size**  
1.09 Acres



**Zoning**  
R-1 Residential

Rev: October 7, 2025

### Our Network Is Your Edge

All information is from sources deemed reliable and is subject to errors, omissions, change of price, rental, prior sale, and withdrawal without notice. Prospect should carefully verify each item of information contained herein.

### Jeff Davis

C: 330.351.5202  
O: 330.940.9360  
JDavis@HoffLeigh.com

### Chad Whitmer

C: 330.714.1145  
O: 330.940.9360  
CWhitmer@HoffLeigh.com

### In Cooperation With:

**FOUNDRY**  
COMMERCIAL  
Carlin Beekman  
407.540.7789  
carlin.beekman@foundrycommercial.com





# Residential Property For Sale

222 FAIRFIELD ROAD, PAINESVILLE, OHIO 44077



Rev: October 7, 2025



## Our Network Is Your Edge

All information is from sources deemed reliable and is subject to errors, omissions, change of price, rental, prior sale, and withdrawal without notice. Prospect should carefully verify each item of information contained herein.

### Jeff Davis

C: 330.351.5202

O: 330.940.9360

[JDavis@HoffLeigh.com](mailto:JDavis@HoffLeigh.com)

### Chad Whitmer

C: 330.714.1145

O: 330.940.9360

[CWhitmer@HoffLeigh.com](mailto:CWhitmer@HoffLeigh.com)

### In Cooperation With:



Carlin Beekman

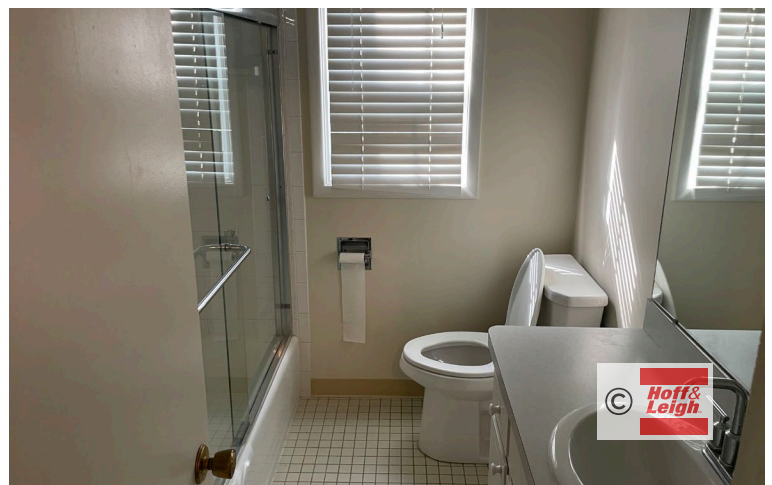
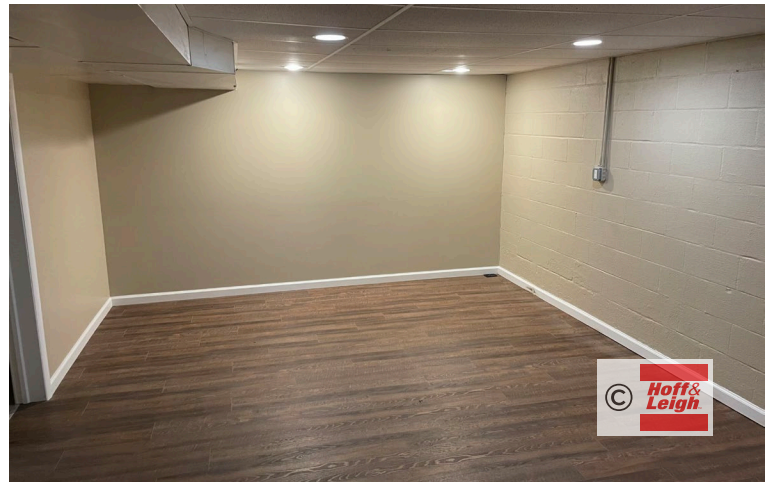
407.540.7789

[carlin.beekman@foundrycommercial.com](mailto:carlin.beekman@foundrycommercial.com)



# Residential Property For Sale

222 FAIRFIELD ROAD, PAINESVILLE, OHIO 44077



Rev: October 7, 2025

## Our Network Is Your Edge

All information is from sources deemed reliable and is subject to errors, omissions, change of price, rental, prior sale, and withdrawal without notice. Prospect should carefully verify each item of information contained herein.

### Jeff Davis

C: 330.351.5202

O: 330.940.9360

[JDavis@HoffLeigh.com](mailto:JDavis@HoffLeigh.com)

### Chad Whitmer

C: 330.714.1145

O: 330.940.9360

[CWhitmer@HoffLeigh.com](mailto:CWhitmer@HoffLeigh.com)

## In Cooperation With:

**FOUNDRY**  
COMMERCIAL

Carlin Beekman

407.540.7789

[carlin.beekman@foundrycommercial.com](mailto:carlin.beekman@foundrycommercial.com)

# Residential Property For Sale

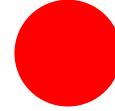
222 FAIRFIELD ROAD, PAINESVILLE, OHIO 44077

## DEMOGRAPHICS



46,590

Population



44.3

Median Age



Average  
Household Size

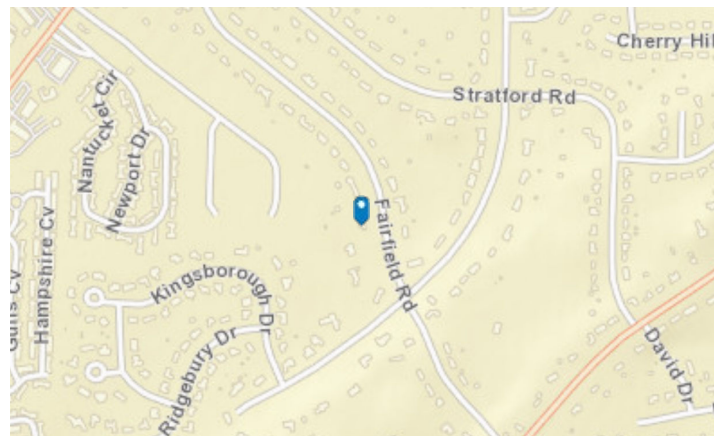


\$90,816

Median Household  
Income

## TRAFFIC COUNT

Nearest Cross Street	VPD	Distance (mi)
Barrington Ridge Rd	3,870	0.1
Ridge Rd	7,400	0.2
Normandy Dr	2,550	0.3
Normandy Dr	2,000	0.4
Coventry Dr	775	0.4



Rev: October 7, 2025

### Our Network Is Your Edge

All information is from sources deemed reliable and is subject to errors, omissions, change of price, rental, prior sale, and withdrawal without notice. Prospect should carefully verify each item of information contained herein.

### Jeff Davis

C: 330.351.5202

O: 330.940.9360

[JDavis@HoffLeigh.com](mailto:JDavis@HoffLeigh.com)

### Chad Whitmer

C: 330.714.1145

O: 330.940.9360

[CWhitmer@HoffLeigh.com](mailto:CWhitmer@HoffLeigh.com)

### In Cooperation With:

**FOUNDRY**  
COMMERCIAL

Carlin Beekman

407.540.7789

[carlin.beekman@foundrycommercial.com](mailto:carlin.beekman@foundrycommercial.com)





# Residential Property For Sale

222 FAIRFIELD ROAD, PAINESVILLE, OHIO 44077



Rev: October 7, 2025



## Our Network Is Your Edge

All information is from sources deemed reliable and is subject to errors, omissions, change of price, rental, prior sale, and withdrawal without notice. Prospect should carefully verify each item of information contained herein.

### Jeff Davis

C: 330.351.5202

O: 330.940.9360

[JDavis@HoffLeigh.com](mailto:JDavis@HoffLeigh.com)

### Chad Whitmer

C: 330.714.1145

O: 330.940.9360

[CWhitmer@HoffLeigh.com](mailto:CWhitmer@HoffLeigh.com)

## In Cooperation With:



Carlin Beekman

407.540.7789

[carlin.beekman@foundrycommercial.com](mailto:carlin.beekman@foundrycommercial.com)