

Restaurant/Retail Space for Lease

3200-3210 WADSWORTH BOULEVARD, WHEAT RIDGE, COLORADO 80033

PRICE REDUCED!



Overview

Hoff & Leigh is pleased to present this fully renovated ±2,100 SF restaurant/retail space for lease at a highly visible, lighted corner location on Wadsworth Boulevard. This move-in-ready space features a hood system, 3-phase power, two ADA-compliant restrooms, one additional restroom, brand new flooring, new HVAC systems, and new water heaters.

Ideal for cafés, bakeries, pizza, smoothie/juice, grab-and-go, specialty food, and other light food-service or retail concepts. While no grease trap is currently installed, the existing infrastructure offers significant buildout savings and a strong foundation for a variety of uses.

With prominent signage, ample parking, excellent access, and strong surrounding demographics, this turnkey location is ready to support your business from day one.

Suite 3206: 2,100 SF x \$15.00 NNN (NNN=\$8.00) = \$4,025/Month

Unit:	Size:	Lease Rate:
3206	2,100 SF	\$17.00 SF/YR (NNN) \$15.00 SF/YR (NNN)

Highlights

- New HVAC and Water Heaters Installed
- Brand New Flooring and Base
- 2 ADA-Compliant Restrooms + 1 Standard
- 3-Phase Electrical Service
- Hood System in Place
- Ample Customer Parking

Property Details



Lease Rate
\$15.00 SF/YR (NNN)



Building Size
10,200 SF



Space Available
2,100 SF



Zoning
PCD

Rev: May 12, 2026



Restaurant/Retail Space for Lease

3200-3210 WADSWORTH BOULEVARD, WHEAT RIDGE, COLORADO 80033

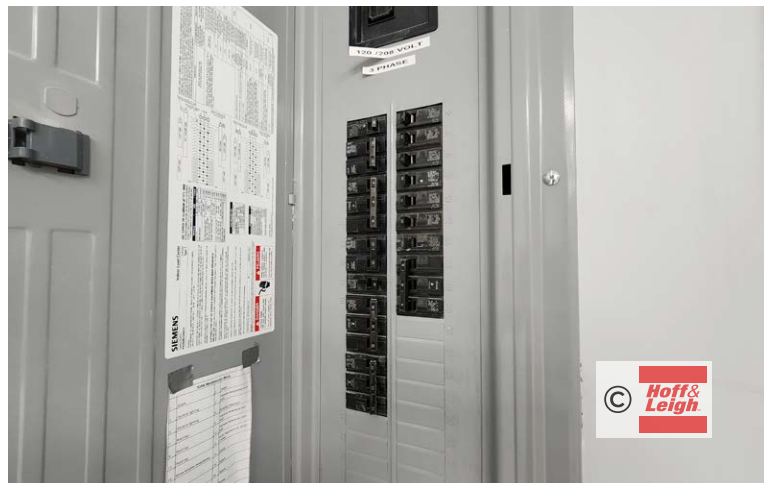


Rev: May 12, 2026



Restaurant/Retail Space for Lease

3200-3210 WADSWORTH BOULEVARD, WHEAT RIDGE, COLORADO 80033

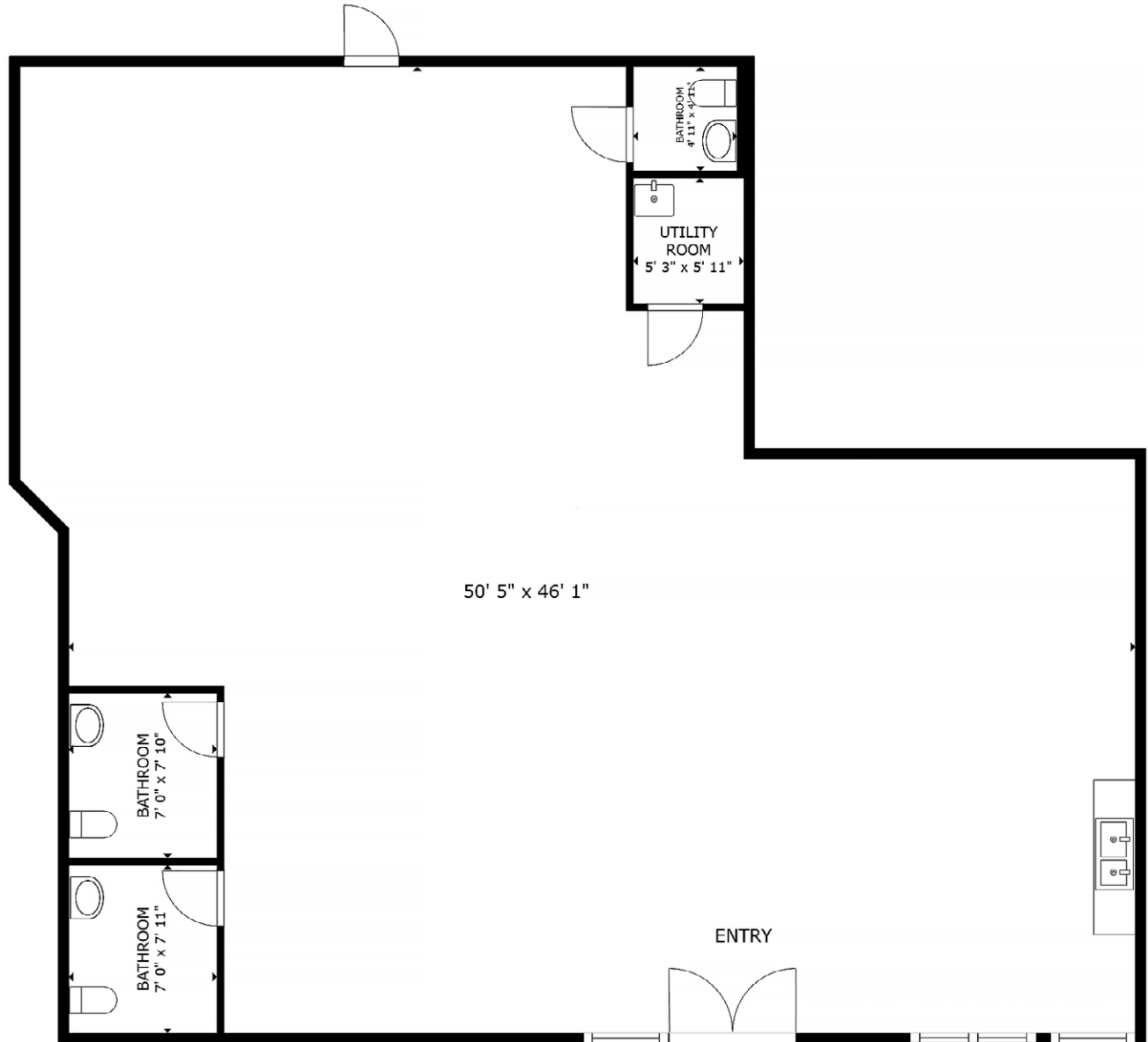


Rev: May 12, 2026



Restaurant/Retail Space for Lease

3200-3210 WADSWORTH BOULEVARD, WHEAT RIDGE, COLORADO 80033



FLOOR PLAN

Rev: May 12, 2026



Our Network Is Your Edge

All information is from sources deemed reliable and is subject to errors, omissions, change of price, rental, prior sale, and withdrawal without notice. Prospect should carefully verify each item of information contained herein.



Lisa Langiewicz
C: 970.903.4198
O: 720.572.5187
LisaL@HoffLeigh.com

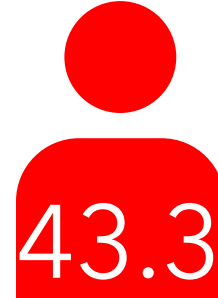
Restaurant/Retail Space for Lease

3200-3210 WADSWORTH BOULEVARD, WHEAT RIDGE, COLORADO 80033

DEMOGRAPHICS



13,181
Population



43.3
Median Age



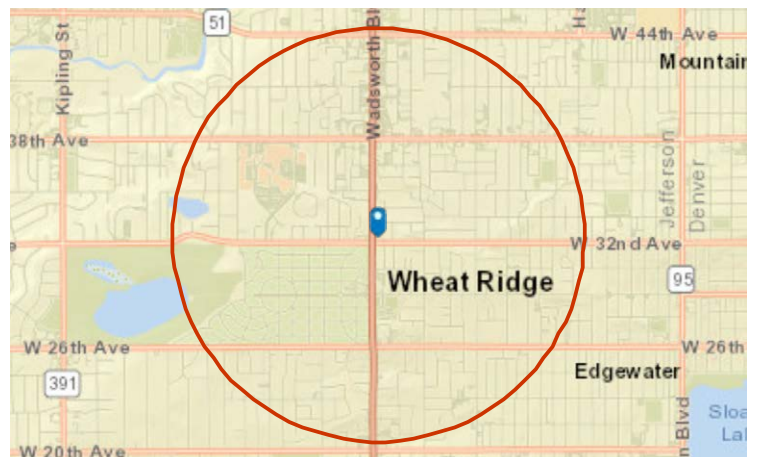
2.1
Average Household Size



\$84,139
Median Household Income

TRAFFIC COUNT

Cross street	VPD	Distance
Webster St	6,755	0.0
W 32nd Ave	39,996	0.0
Webster St	6,755	0.1
Wadsworth Blvd	7,678	0.1
Wadsworth Blvd	7,714	0.1



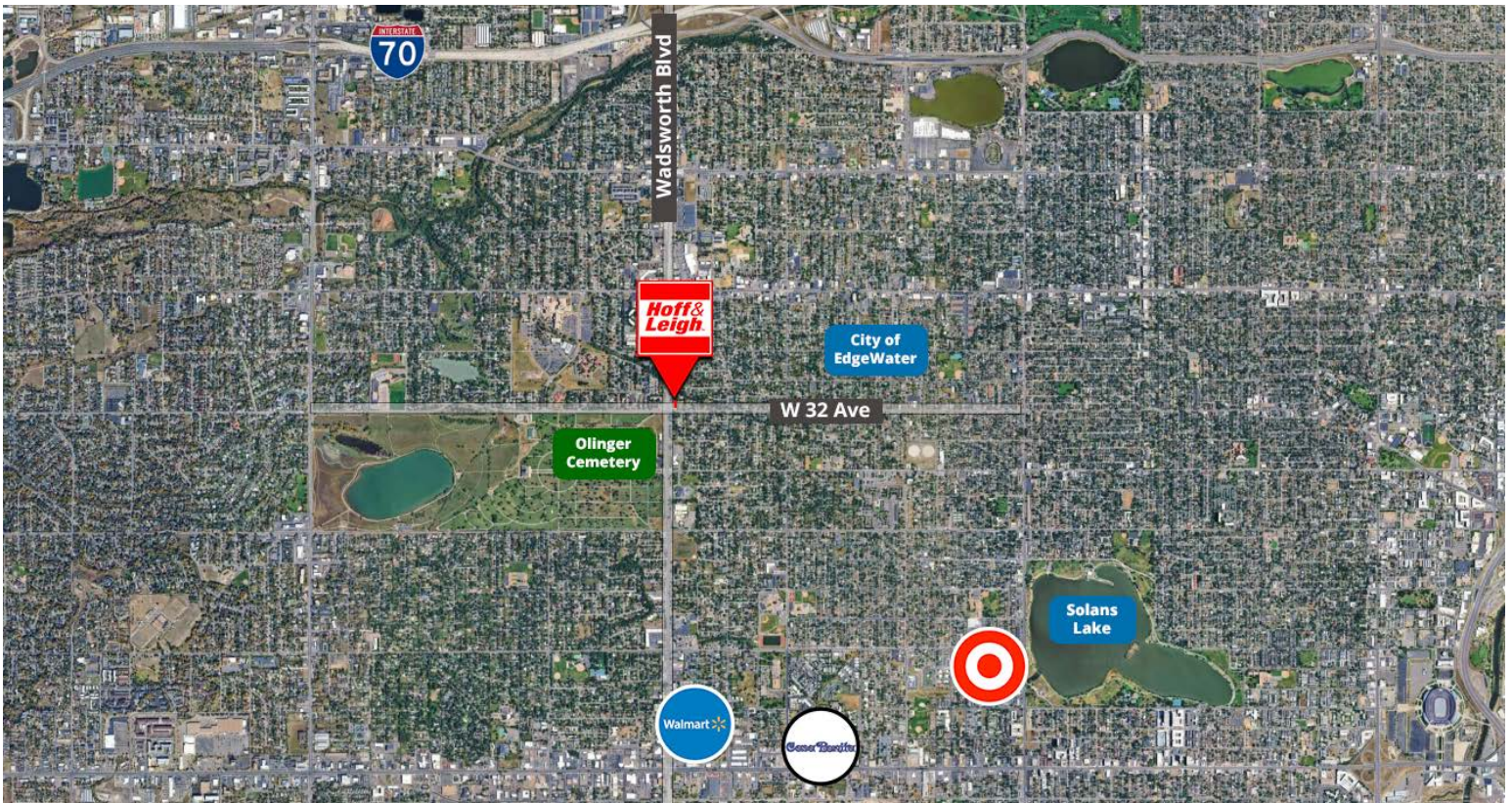
Rev: May 12, 2026





Restaurant/Retail Space for Lease

3200-3210 WADSWORTH BOULEVARD, WHEAT RIDGE, COLORADO 80033



Rev: May 12, 2026



Our Network Is Your Edge

All information is from sources deemed reliable and is subject to errors, omissions, change of price, rental, prior sale, and withdrawal without notice. Prospect should carefully verify each item of information contained herein.



Lisa Langiewicz
C: 970.903.4198
O: 720.572.5187
LisaL@HoffLeigh.com