

Vacant Land For Sale

TIMBER POINT TRAIL VACANT LAND, MANTUA TOWNSHIP, OH 44255



Overview

- Opportunity to purchase 14.2 acres of industrial land for development.
- Advantageous industrial zoning permits a wide range of potential commercial uses.
- Perfect for owner users and developers.
- Portage County is a business-friendly community.
- Potential for development incentives.

Property Details



Sales Price
\$495,000



Lot Size
14.2 Acres



Zoning
Light Industrial

Rev: July 17, 2025

Our Network Is Your Edge

All information is from sources deemed reliable and is subject to errors, omissions, change of price, rental, prior sale, and withdrawal without notice. Prospect should carefully verify each item of information contained herein.

Cole Kroneker

C: 216.302.4338

O: 330.940.9360

CKroneker@HoffLeigh.com

Vacant Land For Sale

TIMBER POINT TRAIL VACANT LAND, MANTUA TOWNSHIP, OH 44255

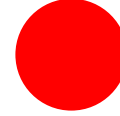
DEMOGRAPHICS

3 Mile Radius



5,545

Population



48.1

Median Age



2.3

Average
Household Size

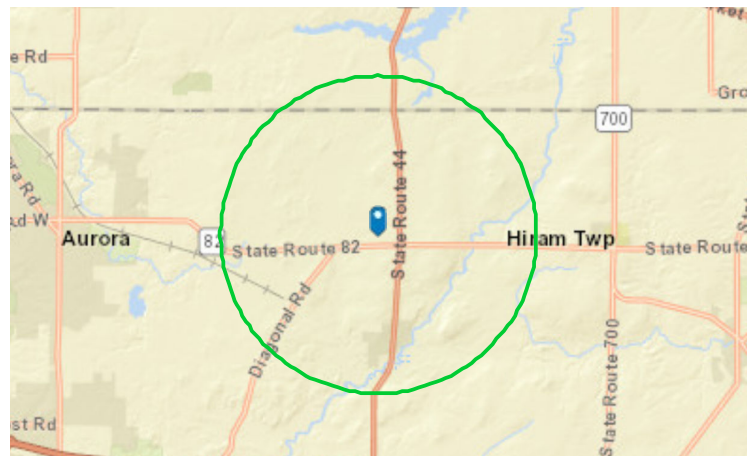


\$79,983

Median Household
Income

TRAFFIC COUNT

Cross street	VPD	Distance
Skinner Rd	6,160	0.4
Twinsburg Warren Rd	7,640	0.6
Ma St 1	7,083	0.7
Herman Rd	1,320	1.1
Bowen Rd	1,236	1.3

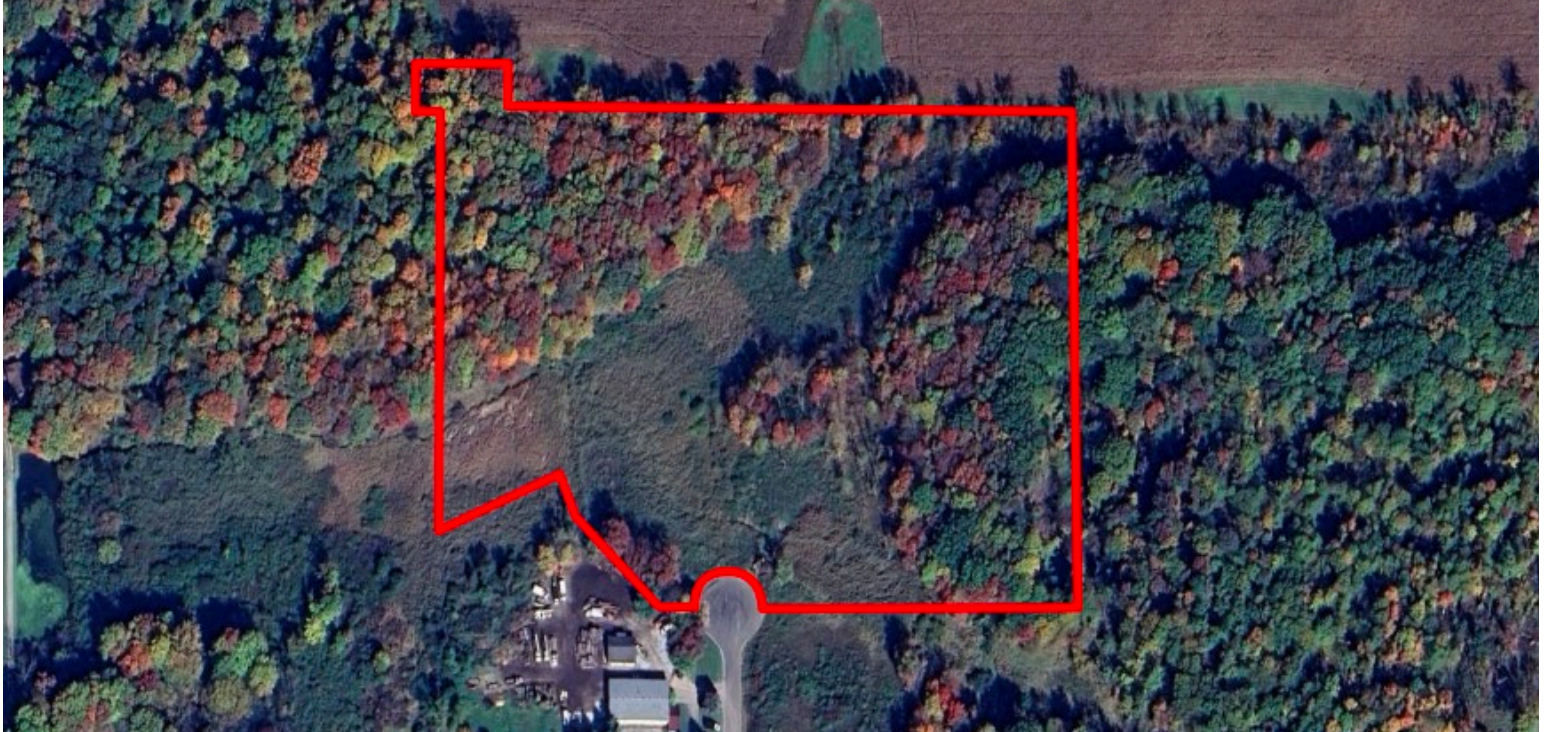


Rev: July 17, 2025



Vacant Land For Sale

TIMBER POINT TRAIL VACANT LAND, MANTUA TOWNSHIP, OH 44255



Rev: July 17, 2025



Our Network Is Your Edge

All information is from sources deemed reliable and is subject to errors, omissions, change of price, rental, prior sale, and withdrawal without notice. Prospect should carefully verify each item of information contained herein.

Cole Kroneker

C: 216.302.4338

O: 330.940.9360

CKroneker@HoffLeigh.com