



2323 NEWTON STREET

OFFERING MEMORANDUM



NON-ENDORSEMENT AND DISCLAIMER NOTICE

CONFIDENTIALITY AND DISCLAIMER

This Confidential Offering Memorandum (“Memorandum”) is furnished to prospective purchasers solely to facilitate the purchaser’s consideration of 2323 Newton Street, Akron, OH 44305 (“Property”). The Memorandum contains proprietary information and was prepared by Hoff & Leigh (“HL”) using information compiled from sources we consider to be reliable. By receipt of this Memorandum, you agree that: (a) the Memorandum and its contents are of a confidential nature and that you will hold and treat it in strictest confidence in full compliance with the separate confidentiality agreement you have executed; (b) you will not reproduce, transmit or disseminate the information contained in the Memorandum through any means, or disclose this Memorandum or any of its contents to any other entity without the prior written authorization of HL, nor will you use this Memorandum or any of its contents in any fashion or manner detrimental to the interests of HL or seller; and (c) upon request you will return the Memorandum without retaining any copy or extract of any portion thereof. This Memorandum does not purport to be all-inclusive or to contain all the information which prospective purchasers may desire; it is a summary upon which prospective purchasers are not entitled to rely. Certain documents and materials are described herein in summary form.

The summaries are not complete descriptions of the documents and materials. Interested parties are expected to review all such documents and materials independently. Market financial projections are provided for reference purposes only and are based on assumptions relating to the general economy, competition and other factors beyond the control of HL and are, therefore, subject to material variation. Additional information and an opportunity to inspect the Property will be made available to qualified prospective purchasers upon request. Each purchase offer is to be based strictly and entirely upon the purchaser’s independent investigation, analysis, appraisal and evaluation of facts and circumstances deemed relevant by the purchaser. Neither Owner, HL nor any of their respective directors, officers or affiliates have made any representation or warranty, express or implied, as to the accuracy or completeness of this Memorandum or any of its contents, and no legal commitment or obligation shall arise by reason of this Memorandum or its contents. This offering is submitted and received with the understanding that all negotiations for the acquisition of the herein described property will be conducted through HL. The sellers and HL expressly reserve the right, at their sole discretion, to reject any or all expressions of interest or offers to purchase the Property and/or terminate discussions with any entity at any time with or without notice.





Debra Kaplan
O: 330.940.9360
C: 330.328.5594
Debra@HoffLeigh.com



Steve Spinelli
C: 330.472.3614
stevespinellirealtor@gmail.com

kw CHERVENIC
KELLERWILLIAMS. REALTY



EXCLUSIVELY LISTED BY

**Hoff &
Leigh**

VIEW OUR OTHER LISTINGS AT
WWW.HOFFLEIGH.COM

WHERE HISTORY MEETS A
THRIVING FUTURE



2323 NEWTON STREET

AKRON, OH 44305



TABLE OF CONTENTS

06 EXECUTIVE SUMMARY SECTION 1

- Offering Overview
- Property Photos
- Close-Up Aerial Map
- Proximity Map
- Floor Plans
- About the Tenant

14 DEMOGRAPHIC SUMMARY SECTION 3

- Demographic Highlights
- Population Details

EXCLUSIVELY
LISTED BY





EXECUTIVE SUMMARY

2323 Newton Street

INVESTMENT OVERVIEW

2323 NEWTON STREET

AKRON, OH 44305



Reduced Sales Price:

~~\$1,900,000~~
\$1,690,000



Type:

Investment



Building Size:

35,284 SF



Lot Size:

0.81 Acres



Zoning:

402-C Apartments
/Rental Units

- 18, Two Bedroom Units +/- 700 square feet
- 4, One Bedroom Units +/- 600 square feet
- Coin Operated Laundry Facility
- Roof: Approximately 2009
- Windows + Doors: 2009 - 2010
- Boilers- 2012
- Water Tank(s) - 2 / 2024
- Electric: Separately metered (meters located in General Maintenance Room)
- Electric Ranges in all units
- Baseboard hot water heat
- Asphalt / Striping: May 2025
- Exterior Wood Facia/ Soffit: 2025
- Professionally Managed

DO NOT DISTURB THE TENANTS

*For detailed financial information, please complete the NDA form and send to Debra Kaplan at Debra@HoffLeigh.com.

[CLICK FOR NDA FORM](#)

LOCATION HIGHLIGHTS

2323 NEWTON STREET

AKRON, OH 44305

- Beautiful, well maintained 22 Unit garden style MUH located in the Cleveland Akron Canton thriving MSA known as Goodyear Heights.
- The sub-market benefits from proximity to: Summa Health, Akron Children's Hospital, Goodyear - HQ, University of Akron, GOJO Industries, FEDEX.

[VIRTUAL TOUR](#)

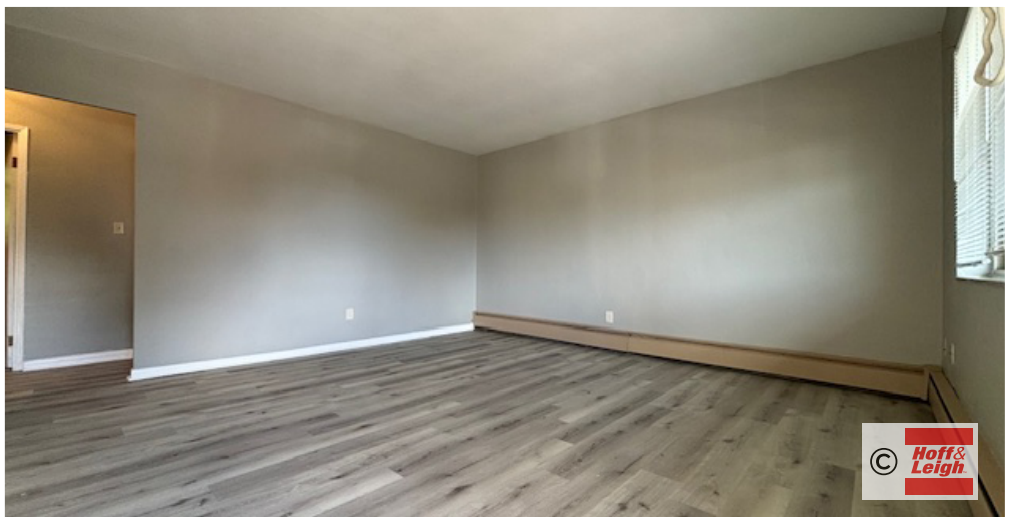
ONE BEDROOM EXAMPLE

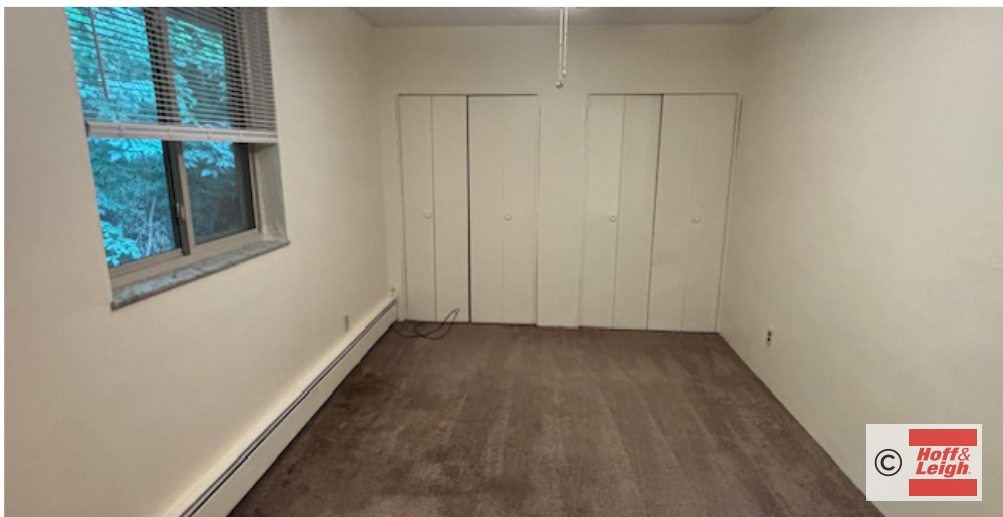


2323 Newton Street.: 35,284 SF



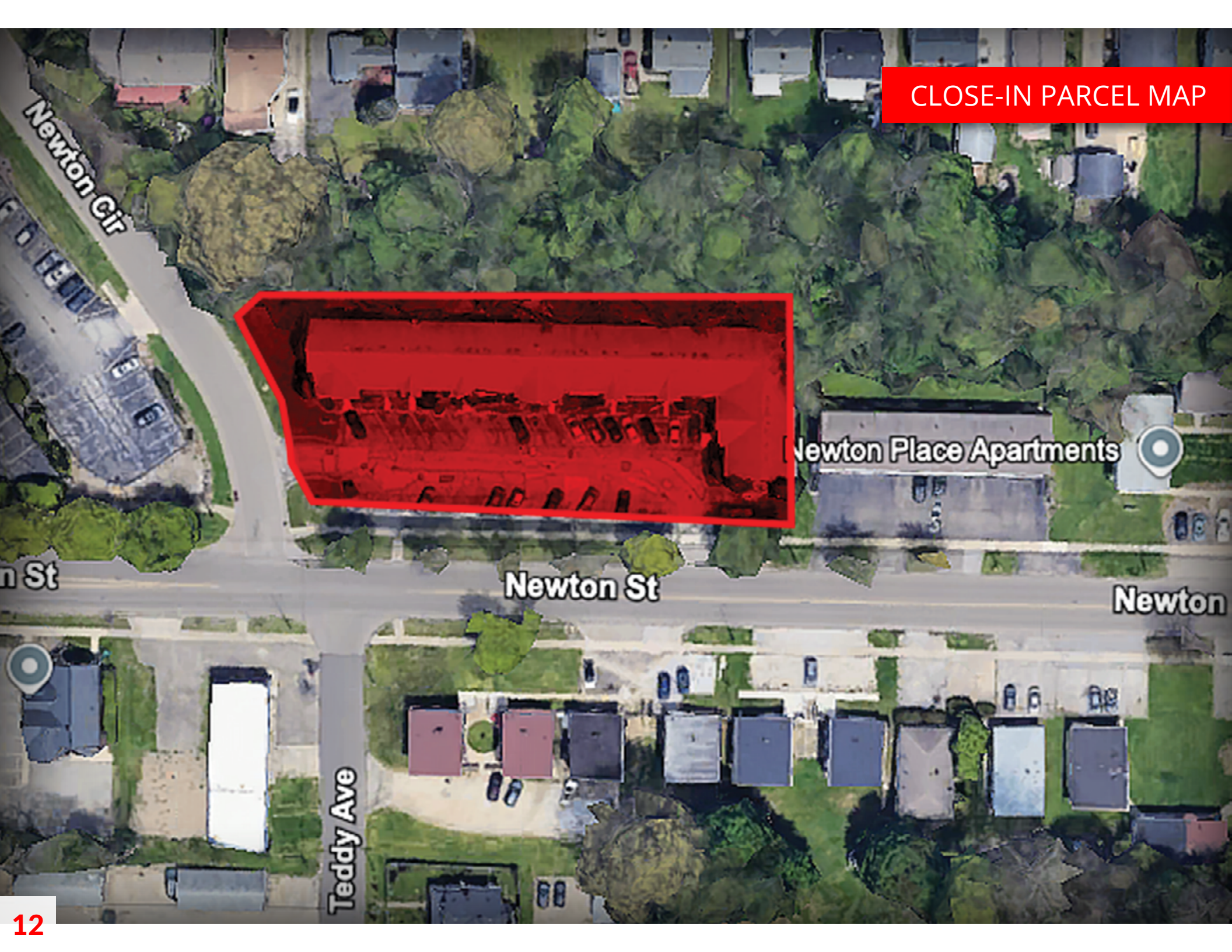
PHOTOS





PHOTOS

CLOSE-IN PARCEL MAP





DEMOGRAPHIC **OVERVIEW**

2323 Newton Street

DEMOGRAPHIC HIGHLIGHTS

3-Mile Radius



64,669
Population



41.1
Median Age



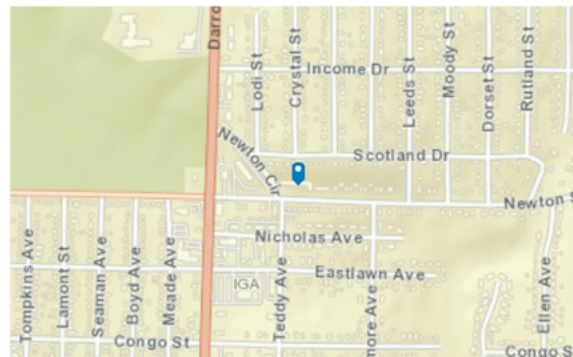
2.2
Average
Household Size



\$59,534
Median Household
Income

TRAFFIC COUNT

Cross street	VPD	Distance
Eastlawn Ave	26,310	0.2
Moody St	4,234	0.2
Income Dr	13,500	0.2
Seaman Ave	8,660	0.3
Tyro Ave	14,980	0.3



POPULATION DETAILS

	1 mile	3 miles	5
Population Summary			
2000 Total Population	9,277	71,510	181,169
2010 Total Population	8,715	67,853	172,051
2022 Total Population	8,327	64,669	164,866
2022 Group Quarters	26	325	4,428
2027 Total Population	8,167	63,437	162,273
2019-2024 Annual Rate	-0.39%	-0.38%	-0.32%
2022 Total Daytime Population	5,674	64,659	195,252
Workers	1,379	31,298	108,898
Residents	4,295	33,361	86,354
Housing Unit Summary			
2022 Housing Units	3,986	31,148	78,478
Owner Occupied Housing Units	66.1%	59.1%	51.2%
Renter Occupied Housing Units	29.5%	33.9%	40.3%
Vacant Housing Units	4.4%	7.1%	8.5%
2027 Housing Units	3,994	31,200	78,760
Owner Occupied Housing Units	66.5%	59.5%	51.6%
Renter Occupied Housing Units	28.6%	32.9%	39.5%
Vacant Housing Units	4.9%	7.6%	8.8%
2022 Households by Income			
Household Income Base	3,809	28,941	71,795
<\$15,000	7.0%	9.2%	11.3%
\$15,000 - \$24,999	6.8%	8.8%	9.5%
\$25,000 - \$34,999	10.2%	10.1%	10.3%
\$35,000 - \$49,999	12.6%	12.6%	13.9%
\$50,000 - \$74,999	25.5%	20.8%	20.1%
\$75,000 - \$99,999	11.8%	11.7%	11.6%
\$100,000 - \$149,999	19.6%	17.6%	15.1%
\$150,000 - \$199,999	5.3%	5.9%	4.8%
\$200,000+	1.2%	3.2%	3.4%
Average Household Income	\$72,776	\$74,759	\$70,977
2022 Population by Age			
Total	8,325	64,670	164,865
0 - 4	5.0%	5.5%	5.6%
5 - 9	5.4%	5.7%	5.7%
10 - 14	5.0%	5.8%	5.6%
15 - 24	10.5%	11.3%	13.7%
25 - 34	14.6%	13.6%	14.2%
35 - 44	12.9%	12.9%	12.8%
45 - 54	12.6%	12.0%	11.3%
55 - 64	13.5%	12.7%	12.1%
65 - 74	12.3%	12.2%	11.4%
75 - 84	6.4%	6.3%	5.7%
85 +	1.8%	2.0%	1.8%
18 +	81.8%	79.6%	79.8%

POPULATION DETAILS

	1 mile	3 miles	5
2022 Population 25+ by Educational Attainment			
Total	6,172	46,355	114,370
Less than 9th Grade	0.8%	2.1%	4.0%
9th - 12th Grade, No Diploma	9.0%	6.5%	6.3%
High School Graduate	30.3%	34.4%	32.6%
GED/Alternative Credential	3.1%	3.8%	4.0%
Some College, No Degree	21.2%	21.9%	20.6%
Associate Degree	9.7%	9.8%	10.3%
Bachelor's Degree	17.7%	14.9%	14.8%
Graduate/Professional Degree	8.1%	6.5%	7.3%
2022 Consumer Spending			
Apparel & Services: Total \$	\$5,816,458	\$46,160,861	\$110,255,059
Average Spent	\$1,527.03	\$1,595.00	\$1,535.69
Spending Potential Index	62	65	63
Education: Total \$	\$4,191,875	\$32,878,353	\$79,289,513
Average Spent	\$1,100.52	\$1,136.05	\$1,104.39
Spending Potential Index	62	64	62
Entertainment/Recreation: Total \$	\$10,602,653	\$80,443,375	\$188,551,046
Average Spent	\$2,783.58	\$2,779.56	\$2,626.24
Spending Potential Index	68	68	64
Food at Home: Total \$	\$19,154,580	\$148,800,615	\$352,275,561
Average Spent	\$5,028.77	\$5,141.52	\$4,906.69
Spending Potential Index	68	69	66
Food Away from Home: Total \$	\$9,500,829	\$75,261,857	\$179,358,435
Average Spent	\$2,494.31	\$2,600.53	\$2,498.20
Spending Potential Index	60	63	61
Health Care: Total \$	\$21,274,583	\$161,723,172	\$375,162,466
Average Spent	\$5,585.35	\$5,588.03	\$5,225.47
Spending Potential Index	72	72	68
HH Furnishings & Equipment: Total \$	\$7,084,799	\$55,514,090	\$130,319,017
Average Spent	\$1,860.02	\$1,918.18	\$1,815.15
Spending Potential Index	64	66	62
Personal Care Products & Services: Total \$	\$2,423,280	\$19,447,198	\$46,187,250
Average Spent	\$636.20	\$671.96	\$643.32
Spending Potential Index	61	64	61
Shelter: Total \$	\$60,544,251	\$477,713,163	\$1,140,387,883
Average Spent	\$15,895.05	\$16,506.45	\$15,883.95
Spending Potential Index	60	62	60
Support Payments/Cash Contributions/Gifts in Kind: Total \$	\$7,739,898	\$60,830,412	\$140,808,678
Average Spent	\$2,032.00	\$2,101.88	\$1,961.26
Spending Potential Index	62	64	59
Travel: Total \$	\$8,211,942	\$63,764,689	\$148,922,859
Average Spent	\$2,155.93	\$2,203.26	\$2,074.28
Spending Potential Index	60	61	57
Vehicle Maintenance & Repairs: Total \$	\$3,504,616	\$26,933,418	\$63,634,453
Average Spent	\$920.09	\$930.63	\$886.34
Spending Potential Index	68	69	66



Our Network is Your Edge.



Debra Kaplan
O: 330.940.9360
C: 330.328.5594
Debra@HoffLeigh.com



Steve Spinelli
C: 330.472.3614
stevespinellirealtor@gmail.com

