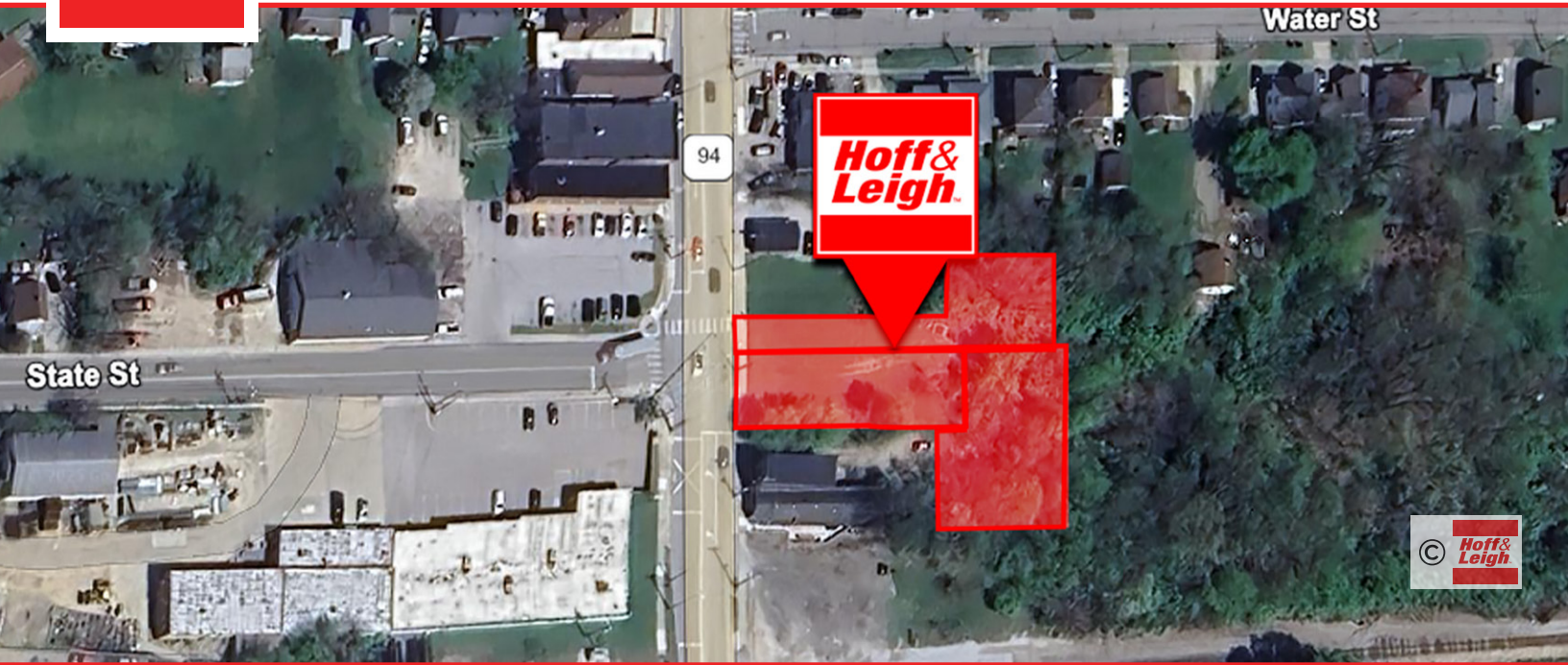


Prime Wadsworth Redevelopment Lot For Sale

369 S MAIN STREET, WADSWORTH, OHIO 44281



Overview

3-parcel lot +/- 0.30 acres, small retail shop or possible multi-unit housing.

Quick walk to Wadsworth's quaint and bustling downtown area at the intersection of Main and State Streets.

Former use: 2 unit retail structure.

Visit wadsworthcity.com for all use / building options.

Highlights

- Beautiful 3 parcel lot available in Medina County Ohio's thriving small town Wadsworth, Ohio.

Property Details



Sales Price
\$65,000



Zoning
Commercial



Lot Size
0.30 Acres

Rev: July 28, 2025

Our Network Is Your Edge

All information is from sources deemed reliable and is subject to errors, omissions, change of price, rental, prior sale, and withdrawal without notice. Prospect should carefully verify each item of information contained herein.

Debra Kaplan

C: 330.328.5594

O: 330.940.9360

Debra@HoffLeigh.com

David Kaplan, SIOR

C: 330.338.5594

O: 330.940.9360

DKaplan@HoffLeigh.com

Prime Wadsworth Redevelopment Lot For Sale

369 S MAIN STREET, WADSWORTH, OHIO 44281

369 Main St, Wadsworth, Ohio, 44281

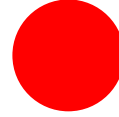
DEMOGRAPHICS

3-Mile Radius



8,327

Population



38.4

Median Age



Average
Household Size

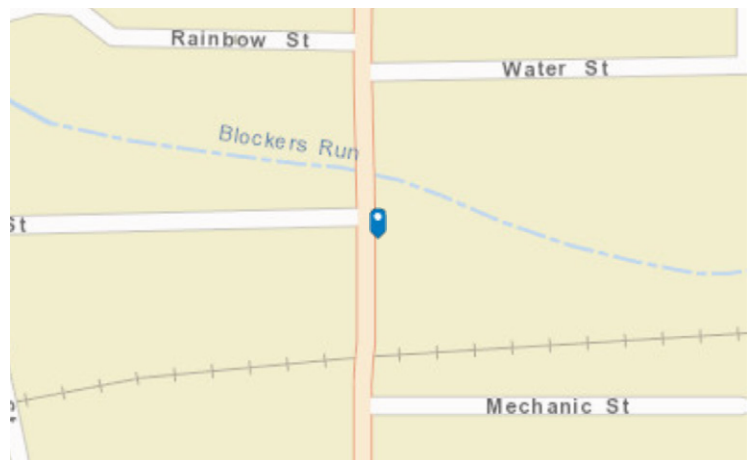


\$65,092

Median Household
Income

TRAFFIC COUNT

Cross street	VPD	Distance
Mechanic St	8,270	0.0
L St	4,180	0.1
Rainbow St	9,700	0.1
Main St	34	0.1
S Lyman St	1,381	0.1

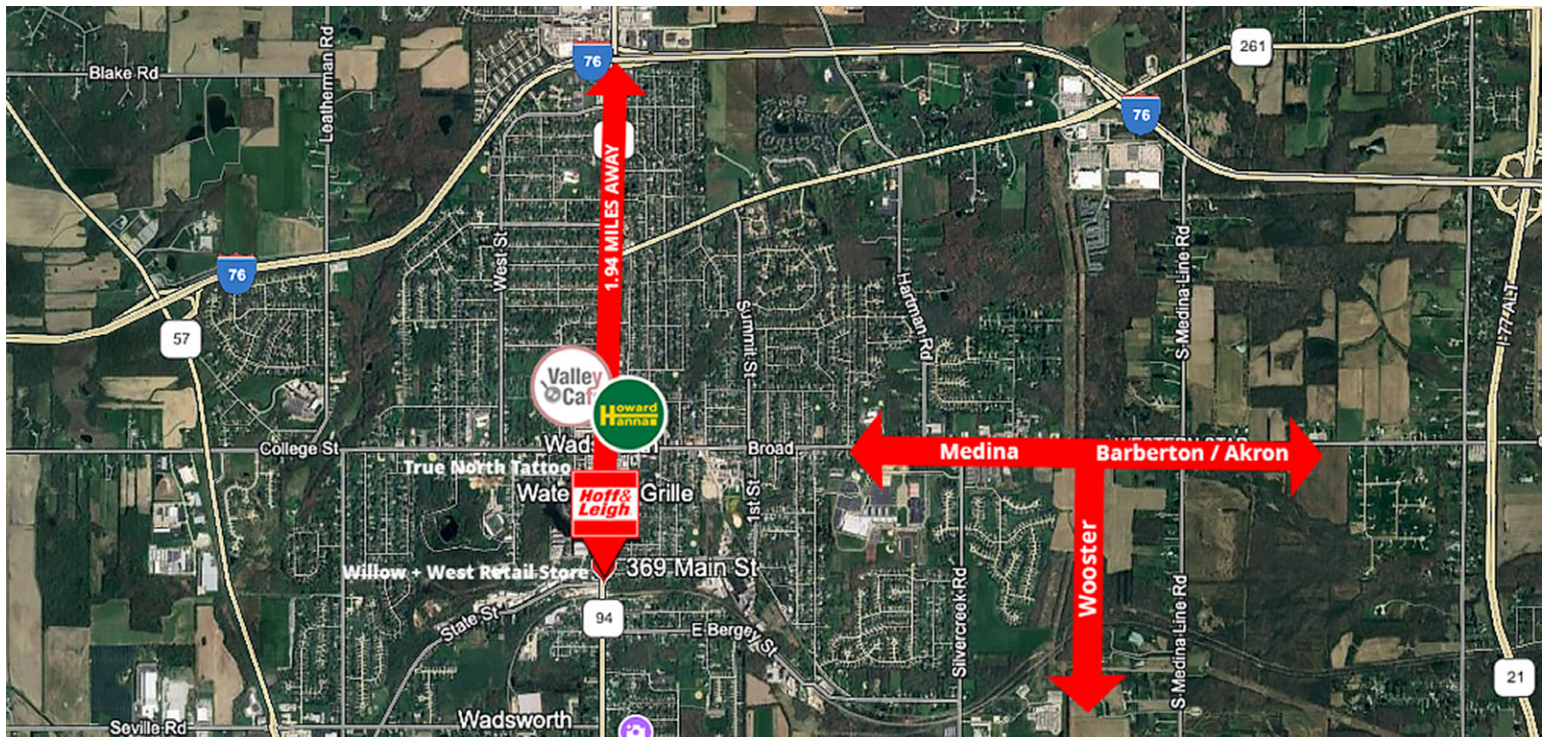
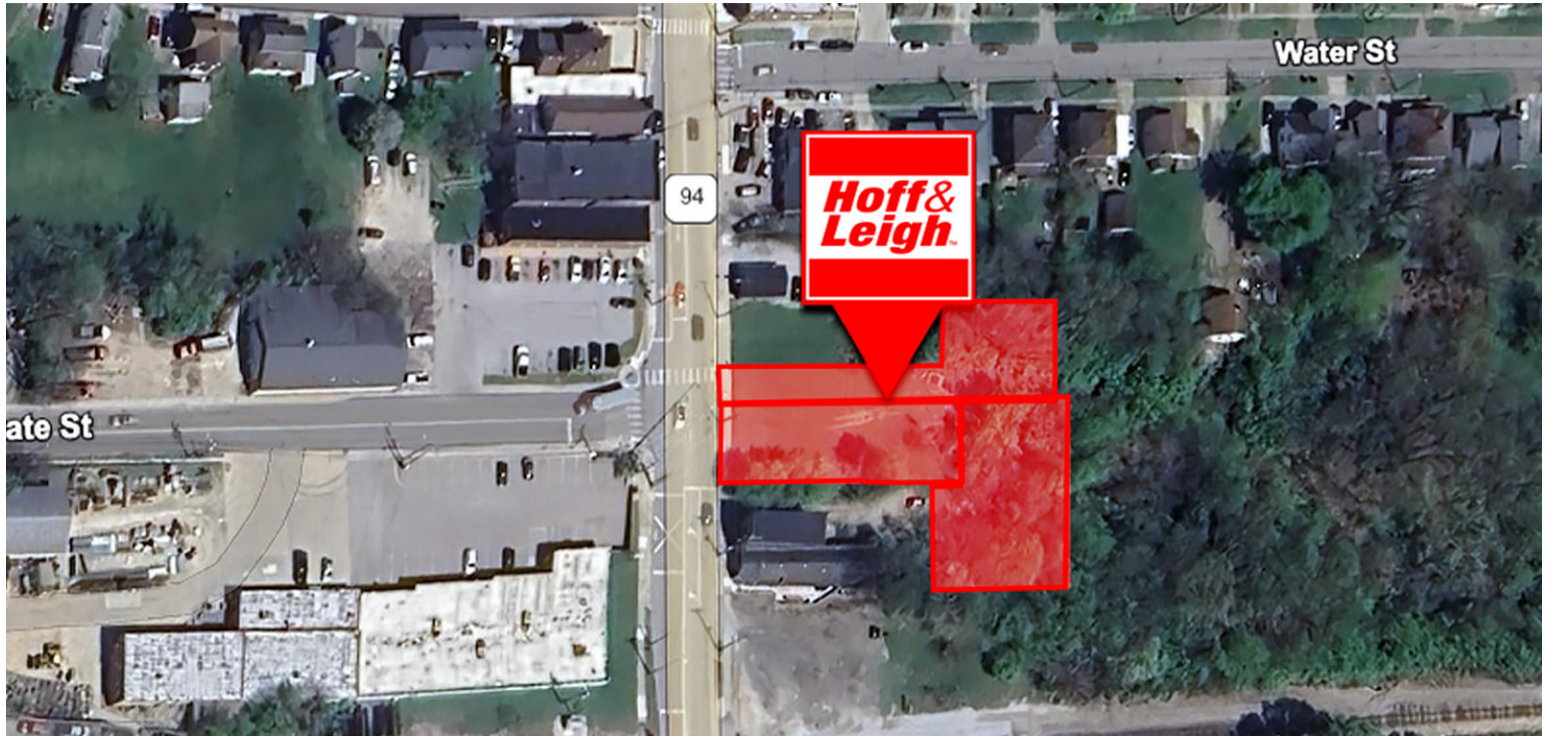


Rev: July 28, 2025



Prime Wadsworth Redevelopment Lot For Sale

369 S MAIN STREET, WADSWORTH, OHIO 44281



Rev: July 28, 2025



Our Network Is Your Edge

All information is from sources deemed reliable and is subject to errors, omissions, change of price, rental, prior sale, and withdrawal without notice. Prospect should carefully verify each item of information contained herein.

Debra Kaplan

C: 330.328.5594

O: 330.940.9360

Debra@HoffLeigh.com

David Kaplan, SIOR

C: 330.338.5594

O: 330.940.9360

DKaplan@HoffLeigh.com