

Premier Monument Office Space

16055 OLD FOREST POINT #103, MONUMENT, CO 80132

[Explore Virtual Tour](#)

Overview

16055 Old Forest Point - Suite 103-E

Only one professional office suite remains! Suite 103-E is clean and move-in ready.

Tenants have access to a shared conference room, waiting area, and break room, creating a full-service office setup.

Conveniently located just off I-25, near restaurants and coffee shops, this suite is ideal for attorneys, CPAs, consultants, therapists, and other professionals seeking a polished local presence.

For details or a tour, contact Guy or Chris Today!

Guy Cox – 719-357-7494

Chris Myers – 719-650-4627

Unit:	Size:	Lease Rate:
103-E	400 SF	\$850 / Month (Gross)

Property Details



Lease Rate
\$25.50 (Gross)



Space Available
400 SF



Lease Type
Full Service Gross -
Escape NNN Leases!



Zoning
PUD

Rev: September 23, 2025

Our Network Is Your Edge

All information is from sources deemed reliable and is subject to errors, omissions, change of price, rental, prior sale, and withdrawal without notice. Prospect should carefully verify each item of information contained herein.

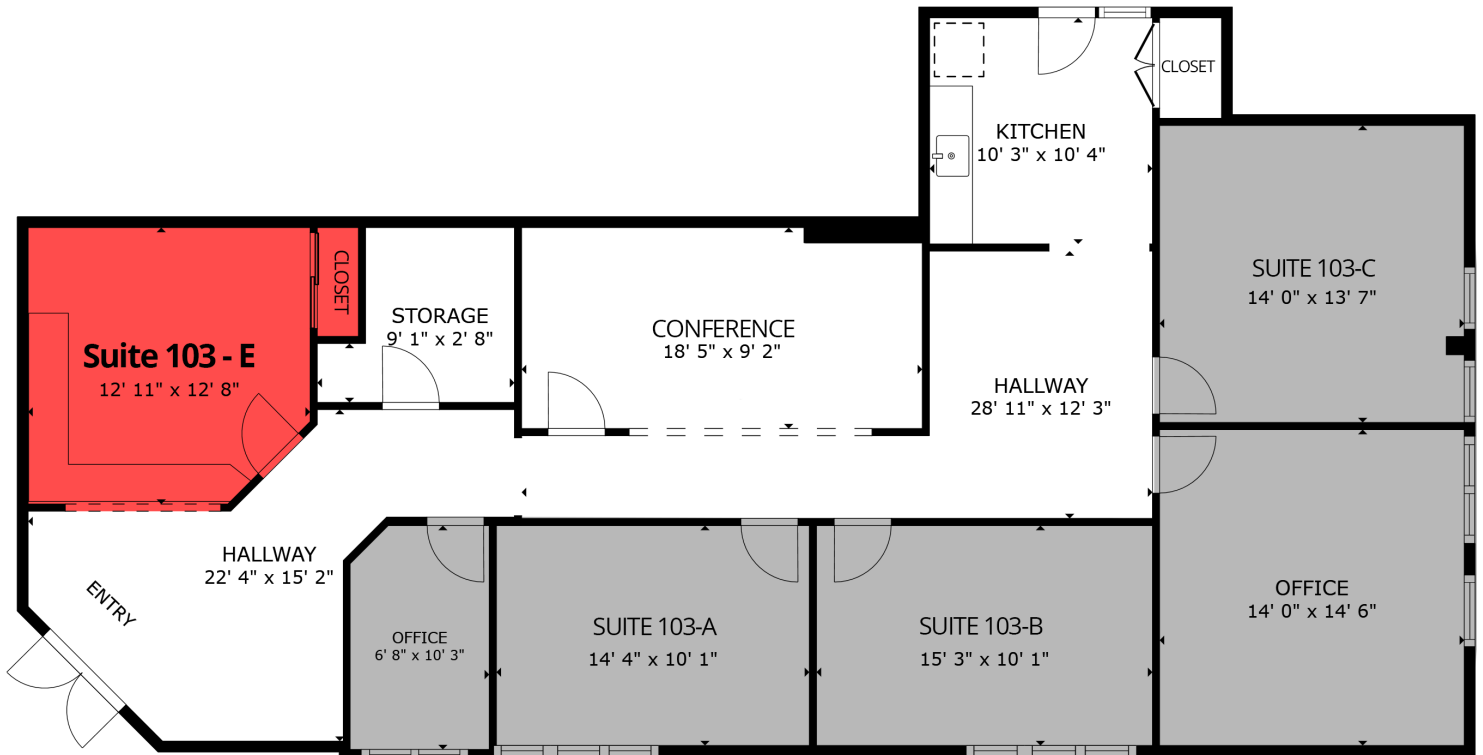


Guy Cox
C: 719.357.7494
O: 719.630.2277
GCox@HoffLeigh.com

Chris Myers
C: 719.650.4627
O: 719.630.2277
CMyers@HoffLeigh.com

Premier Monument Office Space

16055 OLD FOREST POINT #103, MONUMENT, CO 80132



FLOOR PLAN 1

[Explore Virtual Tour](#)

Rev: September 23, 2025

Our Network Is Your Edge

All information is from sources deemed reliable and is subject to errors, omissions, change of price, rental, prior sale, and withdrawal without notice. Prospect should carefully verify each item of information contained herein.



Guy Cox

C: 719.357.7494

O: 719.630.2277

G.Cox@HoffLeigh.com

Chris Myers

C: 719.650.4627

O: 719.630.2277

CMyers@HoffLeigh.com

Premier Monument Office Space

16055 OLD FOREST POINT #103, MONUMENT, CO 80132

16055 Old Forest Pt, Monument, Colorado, 80132

DEMOGRAPHICS



30,676

Population



Median Age



Average
Household Size

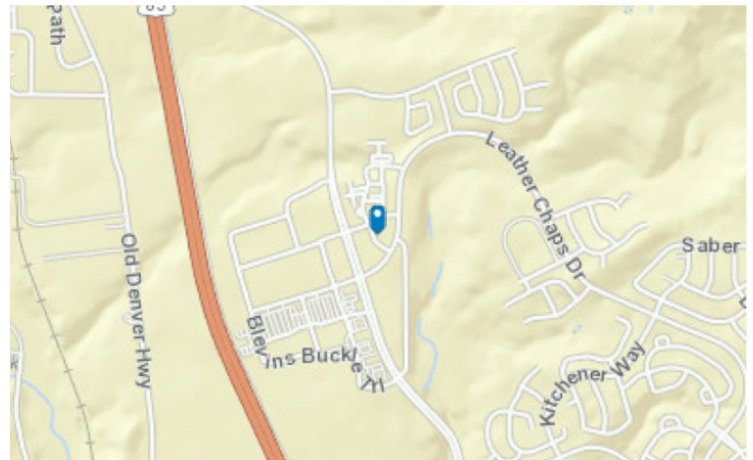


\$149,532

Median Household
Income

TRAFFIC COUNT

Cross street	VPD	Distance
W Baptist Rd	64,300	0.7
W Baptist Rd	2,648	0.7
Wagon Gap Trl	98,000	0.7
I-25	3,942	0.7
W Baptist Rd	7,932	0.7



Rev: September 23, 2025



Premier Monument Office Space

16055 OLD FOREST POINT #103, MONUMENT, CO 80132



Rev: September 23, 2025

Our Network Is Your Edge

All information is from sources deemed reliable and is subject to errors, omissions, change of price, rental, prior sale, and withdrawal without notice. Prospect should carefully verify each item of information contained herein.



Guy Cox
C: 719.357.7494
O: 719.630.2277
GCox@HoffLeigh.com

Chris Myers
C: 719.650.4627
O: 719.630.2277
CMyers@HoffLeigh.com