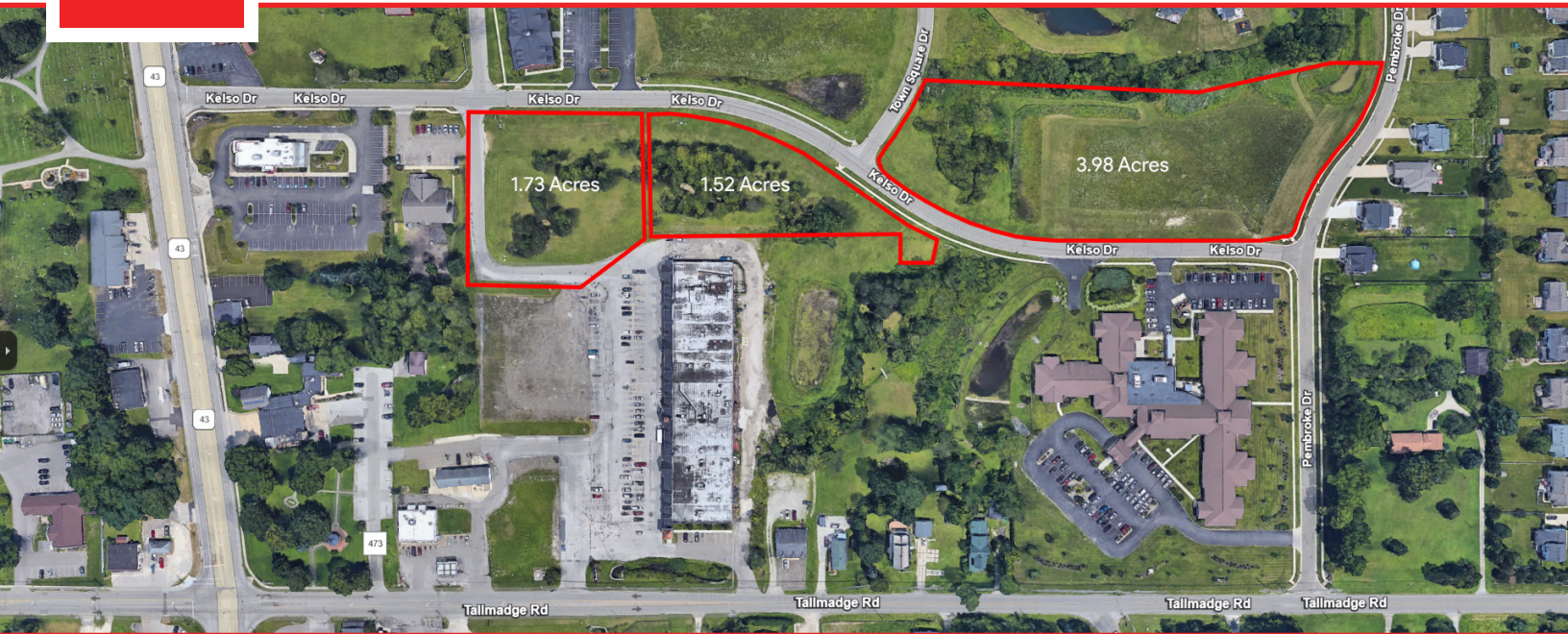


Brimfield Ohio Lots for Sale

KELSO DRIVE & TOWN SQUARE DRIVE, KENT, OH 44240



Overview

Hoff & Leigh is offering multiple lots for sale ranging from 1.5 acres to 3.98 acres of land in the heart of Brimfield, Ohio for sale. This land is zoned Town Center and has many possibilities and various size combinations. The 1.5 acres could be contiguous with the 1.7 acre lot for a total of 3.2 acres. These two lots are contiguous to the Brimfield Plaza.

3.98 acres - \$595,000.00

1.52 acres - \$229,000.00

1.73 acres - \$255,000.00

For additional information please contact Craig DeLorenzo or Tom Franjesh at 330-940-9360.

Highlights

- Close to Highway
- Shovel Ready
- Close to Retail and New Development

Property Details



Sales Prices

3.98 Acre Lot: \$595,000

1.52 Acre Lot: \$229,000

1.73 Acre Lot: \$255,000



Lot Sizes

3.98 Acres

1.52 Acres

1.73 Acres



Zoning

Town Center

Rev: July 29, 2024

Brimfield Ohio Lots for Sale

KELSO DRIVE & TOWN SQUARE DRIVE, KENT, OH 44240

DEMOGRAPHICS



19,296
Population



Median Age



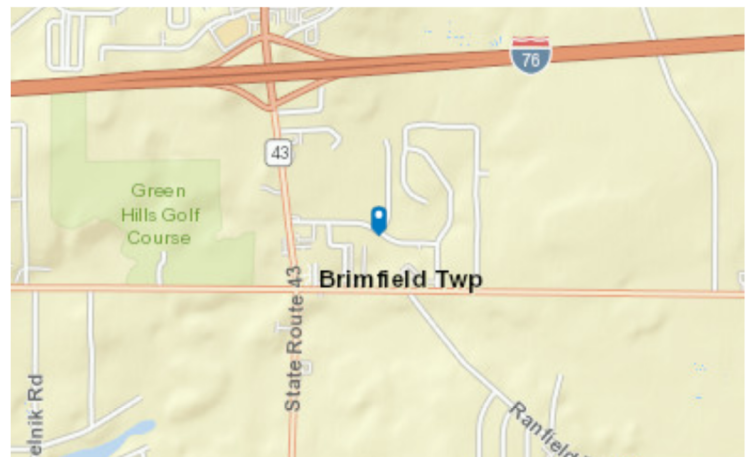
Average
Household Size



\$69,734
Median Household
Income

TRAFFIC COUNT

Cross street	VPD	Distance
Twp Hwy 473	4,189	0.2
Kelso Dr	13,509	0.2
Tallmadge Rd	10,020	0.3
Morley Dr	1,466	0.3
State Hwy43	8,125	0.4



Rev: July 29, 2024

Brimfield Ohio Lots for Sale

KELSO DRIVE & TOWN SQUARE DRIVE, KENT, OH 44240



Rev: July 29, 2024