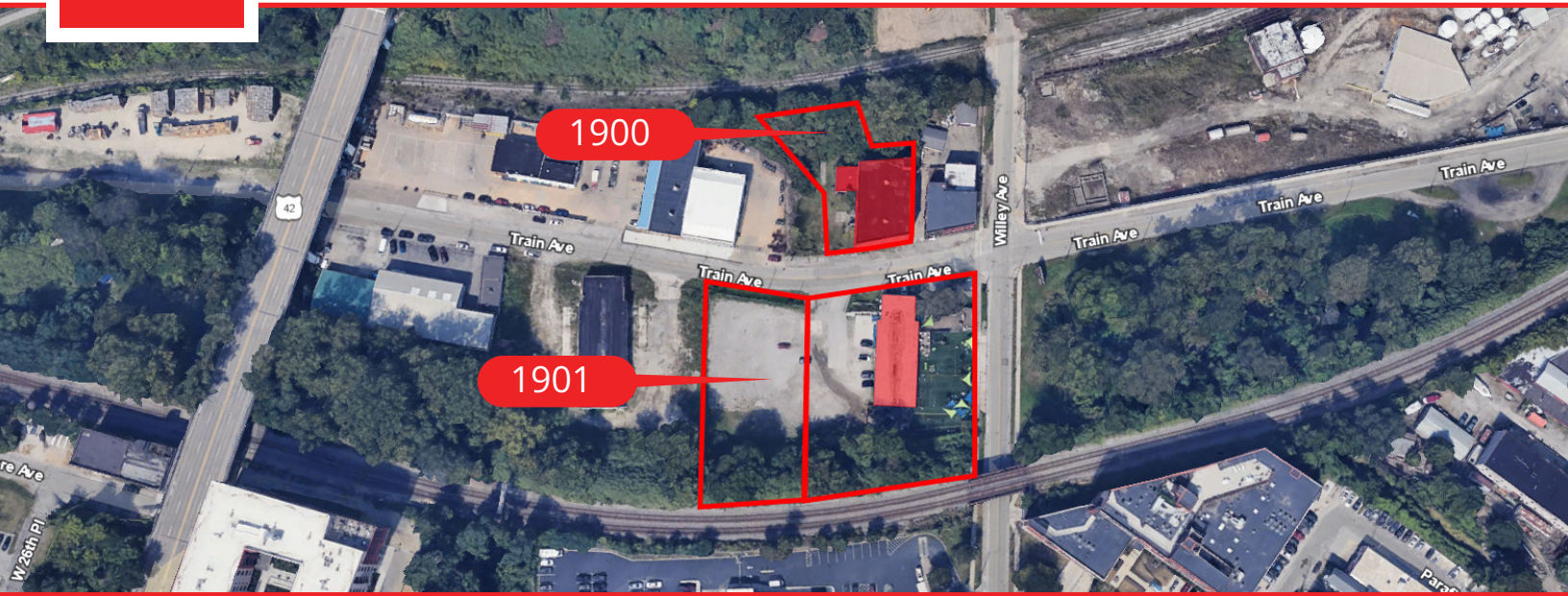


Tremont: Investment / Mixed Use Properties for Sale

1900 - 1901 TRAIN AVENUE, CLEVELAND, OH 44113



Overview

RARE opportunity to purchase in one of Cleveland's hottest markets!

- 1900-1901 Train Avenue
- 31,740 SF Total
- 2.27 Acres Total
- 3 Parcels
- Corner Lot at Train & Willey Avenues
- Significant Upgrades

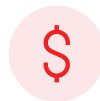
Call for additional information regarding lease details.

Note, 1900 Train is vacant, but was slated for development and underwent planning, environmental and surveys, all until Covid halted progress.

Highlights

- Excellent Location
- High Density Development Area

Property Details



Sales Price
\$1,573,000



Lot Size
2.27 Acres Total



Building Size
31,740 SF Total



Zoning
Semi-Industrial

Rev: February 7, 2024

Tremont: Investment / Mixed Use Properties for Sale

1900 - 1901 TRAIN AVENUE, CLEVELAND, OH 44113

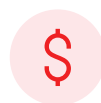
1901 Train Avenue



Highlights

- Income Producing
- Recent Buildout
- Current NOI: \$72,000
- 2025 Projected NOI: \$100,399
- CAP Rate: 9.3%

Property Details



Sales Price
\$1,074,000



Lot Size
1.69 Acres Total



Building Size
6,000 SF Total



Zoning
Semi-Industrial

Rev: February 7, 2024

Tremont: Investment / Mixed Use Properties for Sale

1900 - 1901 TRAIN AVENUE, CLEVELAND, OH 44113

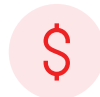
1900 Train Avenue



Highlights

- Vacant Building

Property Details



Sales Price
\$499,000



Building Size
25,740 SF Total



Lot Size
0.58 Acres Total



Zoning
Semi-Industrial

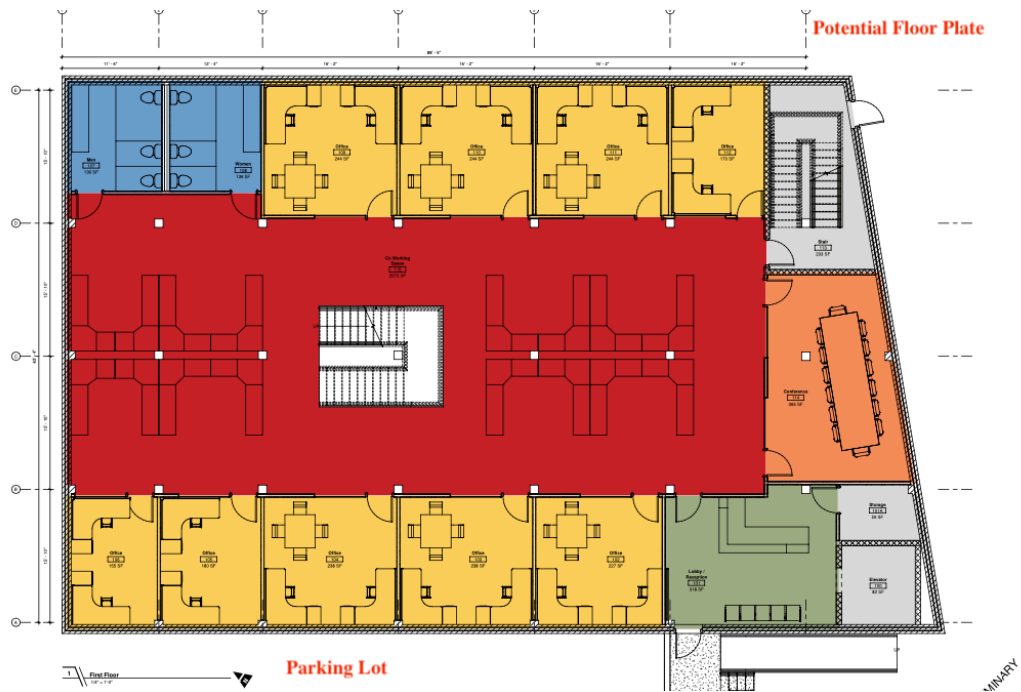
Rev: February 7, 2024

Tremont: Investment / Mixed Use Properties for Sale

1900 - 1901 TRAIN AVENUE, CLEVELAND, OH 44113

1900 Train Avenue

Development Plans



Rev: February 7, 2024

Our Network Is Your Edge

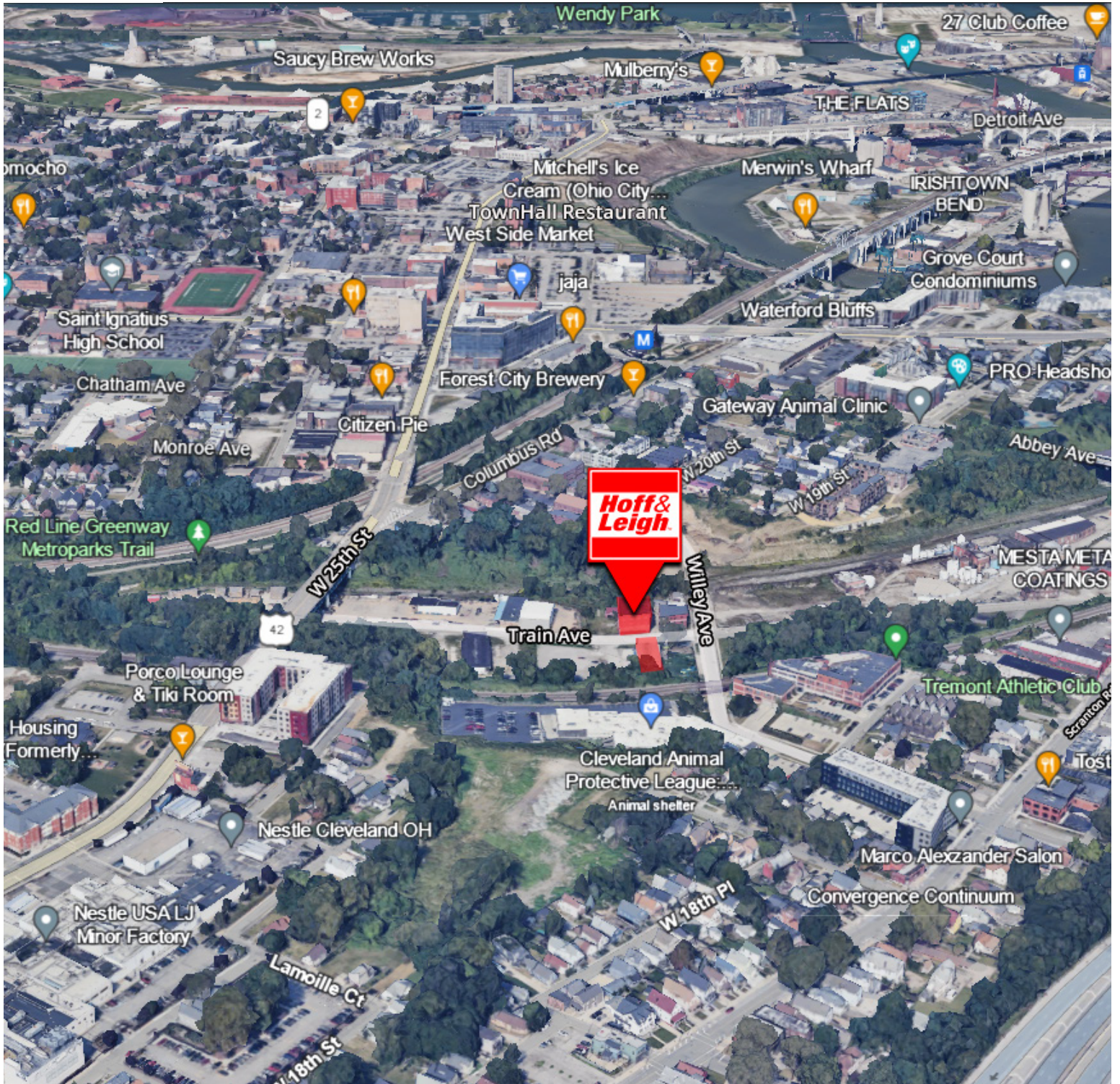


All information is from sources deemed reliable and is subject to errors, omissions, change of price, rental, prior sale, and withdrawal without notice. Prospect should carefully verify each item of information contained herein.

Joe Zumpano
 C: 330.990.0847
 O: 330.940.9360
 JZumpano@HoffLeigh.com

Tremont: Investment / Mixed Use Properties for Sale

1900 - 1901 TRAIN AVENUE, CLEVELAND, OH 44113



Rev: February 7, 2024

Our Network Is Your Edge



All information is from sources deemed reliable and is subject to errors, omissions, change of price, rental, prior sale, and withdrawal without notice. Prospect should carefully verify each item of information contained herein.

Joe Zumpano

C: 330.990.0847

O: 330.940.9360

JZumpano@HoffLeigh.com