

# Office Space for Lease

660 SOUTHPOINTE COURT, COLORADO SPRINGS, CO 80906

**SHORT TERM LEASE!**



## Overview

660 Southpointe Court is a highly visible office building located in the Broadmoor area. Featuring amenities such as fiber-optic internet, elevator service, and ample on-site parking, this property is sure to impress both clients and employees alike. The location is strategically situated near major highways, providing easy access to downtown Colorado Springs, and is surrounded by popular retail and dining destinations. Please call for more information and to set up a tour.

Unit:	Size:	Price:
303	1,002 SF	\$1,350 / Month
303B	450 SF	\$600 / Month

## Highlights

- Ample Parking
- Elevator Service
- Great I-25 Access
- Highly Visibility
- Flexible Terms

## Property Details



### Lease Rate

+/- \$8.50 SF/YR (+ \$7.63 NNN)



### Space Available

450 - 1,002 SF



### Building Size

29,458 SF



### Zoning

OC

Rev: January 29, 2024

### Our Network Is Your Edge

All information is from sources deemed reliable and is subject to errors, omissions, change of price, rental, prior sale, and withdrawal without notice. Prospect should carefully verify each item of information contained herein.

### Chris Myers

C: 719.650.4627

O: 719.630.2277

CMyers@HoffLeigh.com

### Holly Trinidad

C: 719.337.0999

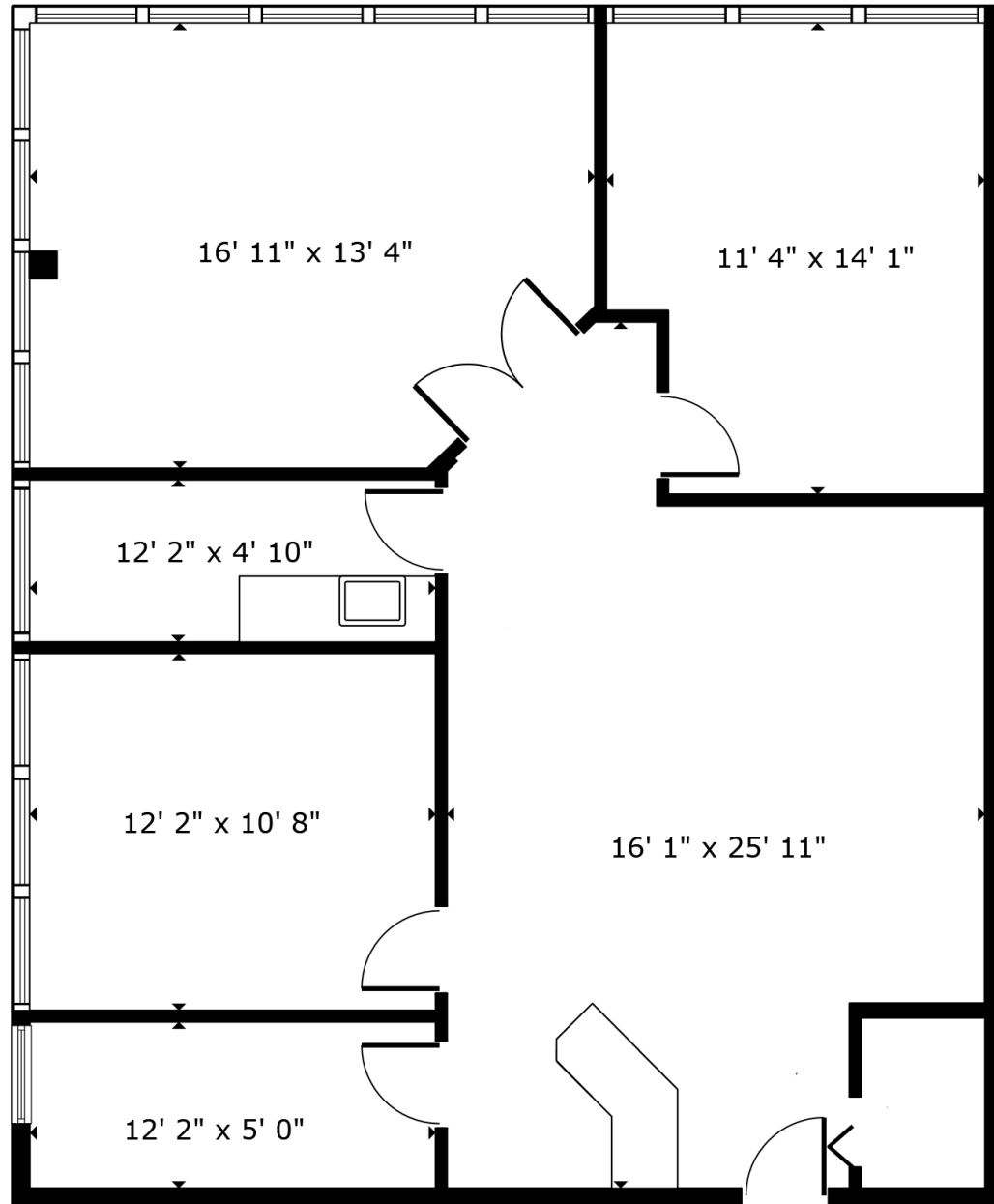
O: 719.630.2277

Holly@HoffLeigh.com

# Office Space for Lease

660 SOUTHPOINTE COURT, COLORADO SPRINGS, CO 80906

## SUITE 303



Rev: January 29, 2024

### Our Network Is Your Edge

All information is from sources deemed reliable and is subject to errors, omissions, change of price, rental, prior sale, and withdrawal without notice. Prospect should carefully verify each item of information contained herein.

### Chris Myers

C: 719.650.4627

O: 719.630.2277

CMyers@HoffLeigh.com

### Holly Trinidad

C: 719.337.0999

O: 719.630.2277

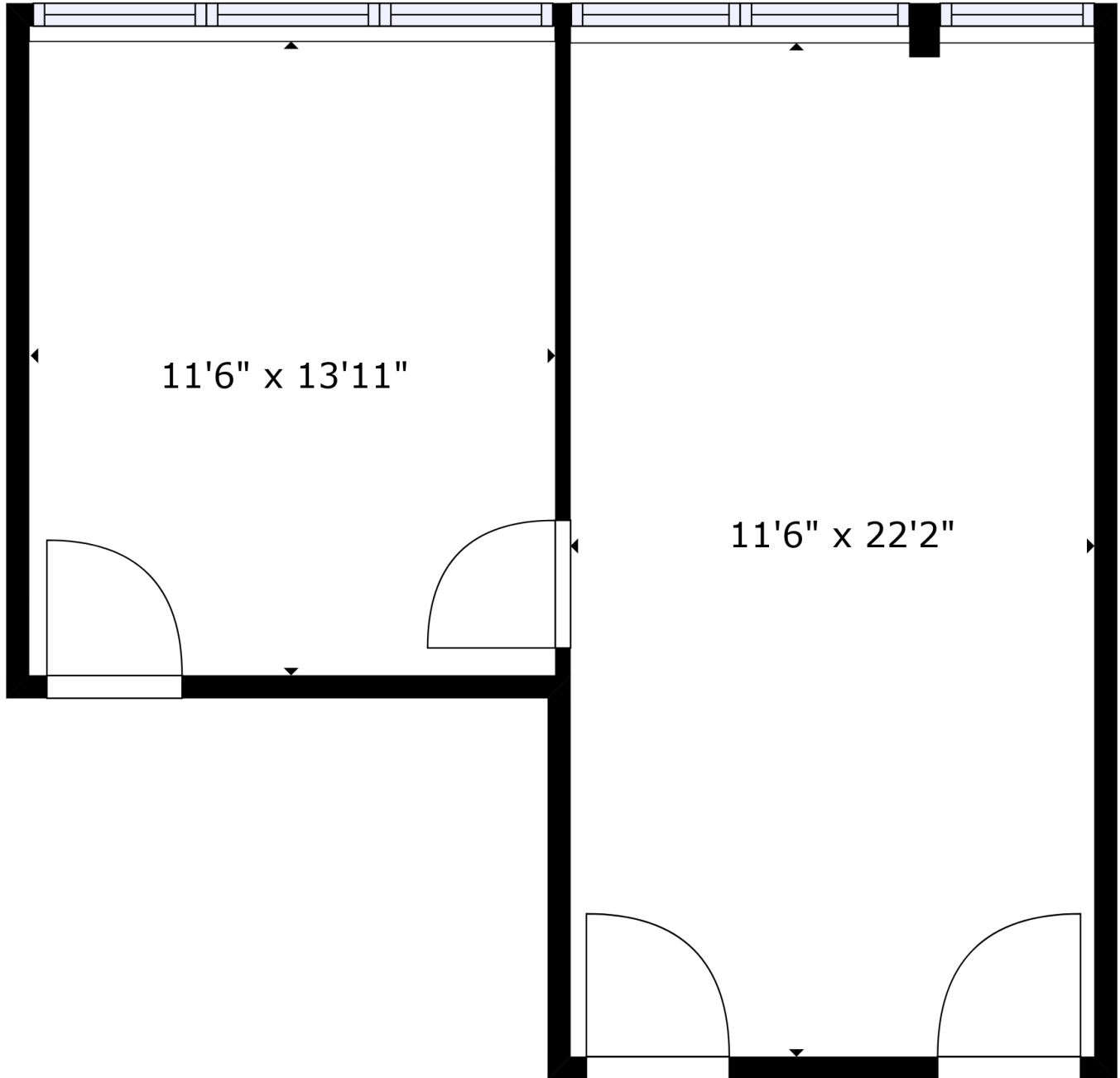
Holly@HoffLeigh.com



# Office Space for Lease

660 SOUTHPOINTE COURT, COLORADO SPRINGS, CO 80906

## SUITE 303B



Rev: January 29, 2024



### Our Network Is Your Edge

All information is from sources deemed reliable and is subject to errors, omissions, change of price, rental, prior sale, and withdrawal without notice. Prospect should carefully verify each item of information contained herein.

### Chris Myers

C: 719.650.4627

O: 719.630.2277

CMyers@HoffLeigh.com

### Holly Trinidad

C: 719.337.0999

O: 719.630.2277

Holly@HoffLeigh.com



# Office Space for Lease

660 SOUTHPOINTE COURT, COLORADO SPRINGS, CO 80906



Rev: January 29, 2024

## Our Network Is Your Edge

All information is from sources deemed reliable and is subject to errors, omissions, change of price, rental, prior sale, and withdrawal without notice. Prospect should carefully verify each item of information contained herein.

**Chris Myers**

C: 719.650.4627

O: 719.630.2277

CMyers@HoffLeigh.com

**Holly Trinidad**

C: 719.337.0999

O: 719.630.2277

Holly@HoffLeigh.com