

Office Space for Lease

1923 BAILEY ROAD, CUYAHOGA FALLS, OH 44221



Overview






Large second floor office space with elevator access on Bailey Road in Cuyahoga Falls. This office consists of a reception area, two large bullpen areas, 9 private offices, conference room, large executive office with wet bar and 1/2 bath, a kitchen area, and two in-suite restrooms. This property has plenty of parking and is available at a below market rate. Please call Ed Jesson to schedule a private showing.

| Unit: | Size: | Price: |
|-------|----------|-------------------|
| 1923 | 5,250 SF | \$8.00 SF/YR (MG) |

Highlights

- High Traffic Area
- Second Floor with Elevator
- In-Suite Restrooms
- Reception Area, Two Bullpen Areas, 9 Private Offices, Conference Room, and One Large Executive Office
- Kitchen Area
- Plenty of Parking

Property Details

-  **Lease Rate**
\$8.00 SF/YR (MG)
-  **Space Available**
5,250 SF
-  **Lot Size**
1.23 Acres
-  **Building Size**
20,664 SF
-  **Zoning**
MU-2

Rev: January 8, 2024

Our Network Is Your Edge



All information is from sources deemed reliable and is subject to errors, omissions, change of price, rental, prior sale, and withdrawal without notice. Prospect should carefully verify each item of information contained herein.

Ed Jesson

C: 330.760.4494

O: 330.940.9360

Ejesson@HoffLeigh.com



Office Space for Lease

1923 BAILEY ROAD, CUYAHOGA FALLS, OH 44221



Rev: January 8, 2024



Our Network Is Your Edge

All information is from sources deemed reliable and is subject to errors, omissions, change of price, rental, prior sale, and withdrawal without notice. Prospect should carefully verify each item of information contained herein.

Ed Jesson

C: 330.760.4494

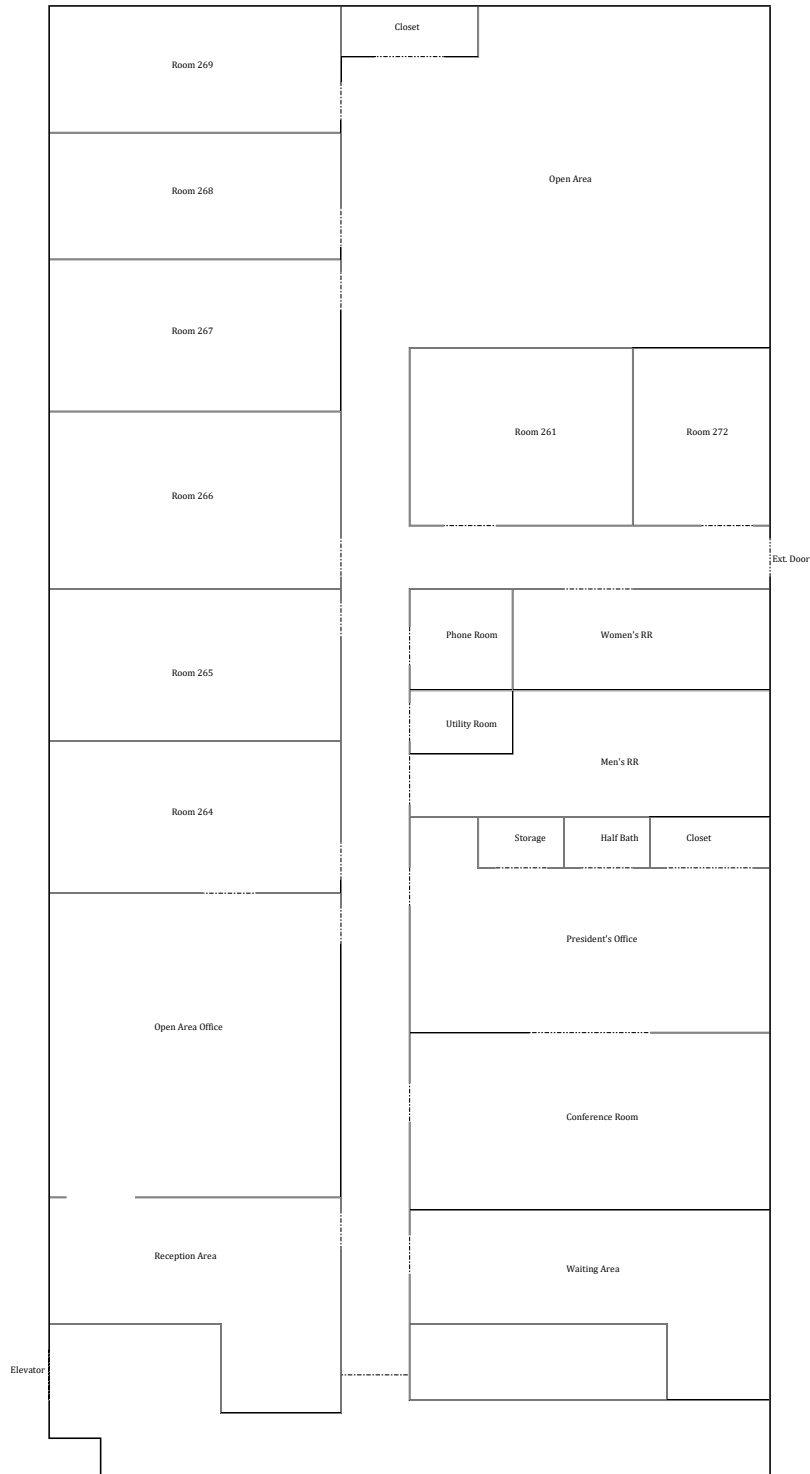
O: 330.940.9360

Ejesson@HoffLeigh.com



Office Space for Lease

1923 BAILEY ROAD, CUYAHOGA FALLS, OH 44221



Rev: January 8, 2024

Our Network Is Your Edge



All information is from sources deemed reliable and is subject to errors, omissions, change of price, rental, prior sale, and withdrawal without notice. Prospect should carefully verify each item of information contained herein.

Ed Jesson

C: 330.760.4494

O: 330.940.9360

EJesson@HoffLeigh.com

Office Space for Lease

1923 BAILEY ROAD, CUYAHOGA FALLS, OH 44221

1923 Bailey Rd, Cuyahoga Falls, Ohio, 44221

DEMOGRAPHICS



83,401
Population



42.5
Median Age



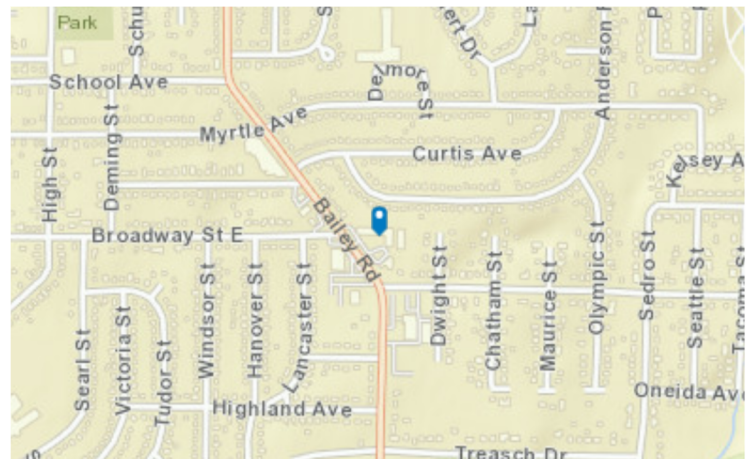
2.2
Average
Household Size



\$60,554
Median Household
Income

TRAFFIC COUNT

| Cross street | VPD | Distance |
|--------------|-------|----------|
| Curtis Ave | 9,581 | 0.2 |
| Bailey Rd | 1,385 | 0.2 |
| Bailey Rd | 2,195 | 0.2 |
| Sedro St | 4,710 | 0.3 |
| Deming St | 2,181 | 0.4 |



Rev: January 8, 2024



Our Network Is Your Edge

All information is from sources deemed reliable and is subject to errors, omissions, change of price, rental, prior sale, and withdrawal without notice. Prospect should carefully verify each item of information contained herein.

Ed Jesson

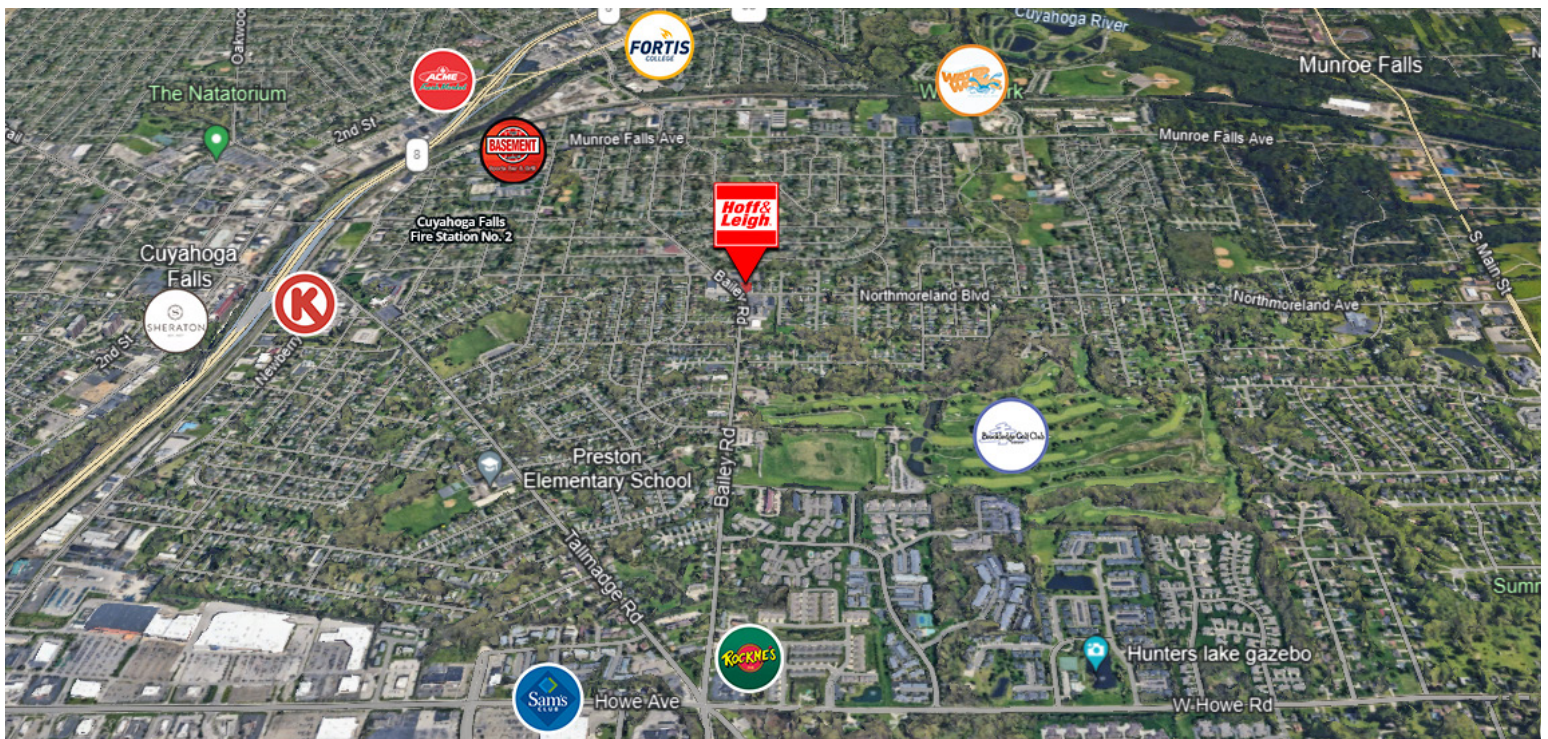
C: 330.760.4494

O: 330.940.9360

Ejesson@HoffLeigh.com

Office Space for Lease

1923 BAILEY ROAD, CUYAHOGA FALLS, OH 44221



Rev: January 8, 2024