

Industrial Condo for Lease

3625 BETTY DRIVE, COLORADO SPRINGS, CO 80917

[Explore Virtual Tour](#)

Overview

Newly renovated warehouse suite with high ceilings, large drive-in doors and 3 offices available for lease. Centrally located with the nearest major intersection being Austin Bluffs and N Academy. The floorplan includes approximately 3,000 SF of warehouse and 1,200 SF of office.

Highlights

- Recently Renovated
- 14' - 22' Ceiling Height
- 12' x 12' Drive-in Doors

Property Details



Lease Rate

\$6,000 / Month (+ Utilities)



Space Available

4,200 SF



Building Size

7,000 SF



Lot Size

0.44 Acres



Zoning

C5

Rev: March 27, 2024

Our Network Is Your Edge

All information is from sources deemed reliable and is subject to errors, omissions, change of price, rental, prior sale, and withdrawal without notice. Prospect should carefully verify each item of information contained herein.

Klete Keller

C: 719.888.9211

O: 719.630.2277

Keller@HoffLeigh.com

Holly Trinidad

C: 719.337.0999

O: 719.630.2277

Holly@HoffLeigh.com



Industrial Condo for Lease

3625 BETTY DRIVE, COLORADO SPRINGS, CO 80917



Rev: March 27, 2024



Our Network Is Your Edge

All information is from sources deemed reliable and is subject to errors, omissions, change of price, rental, prior sale, and withdrawal without notice. Prospect should carefully verify each item of information contained herein.

Klete Keller

C: 719.888.9211

O: 719.630.2277

Keller@HoffLeigh.com

Holly Trinidad

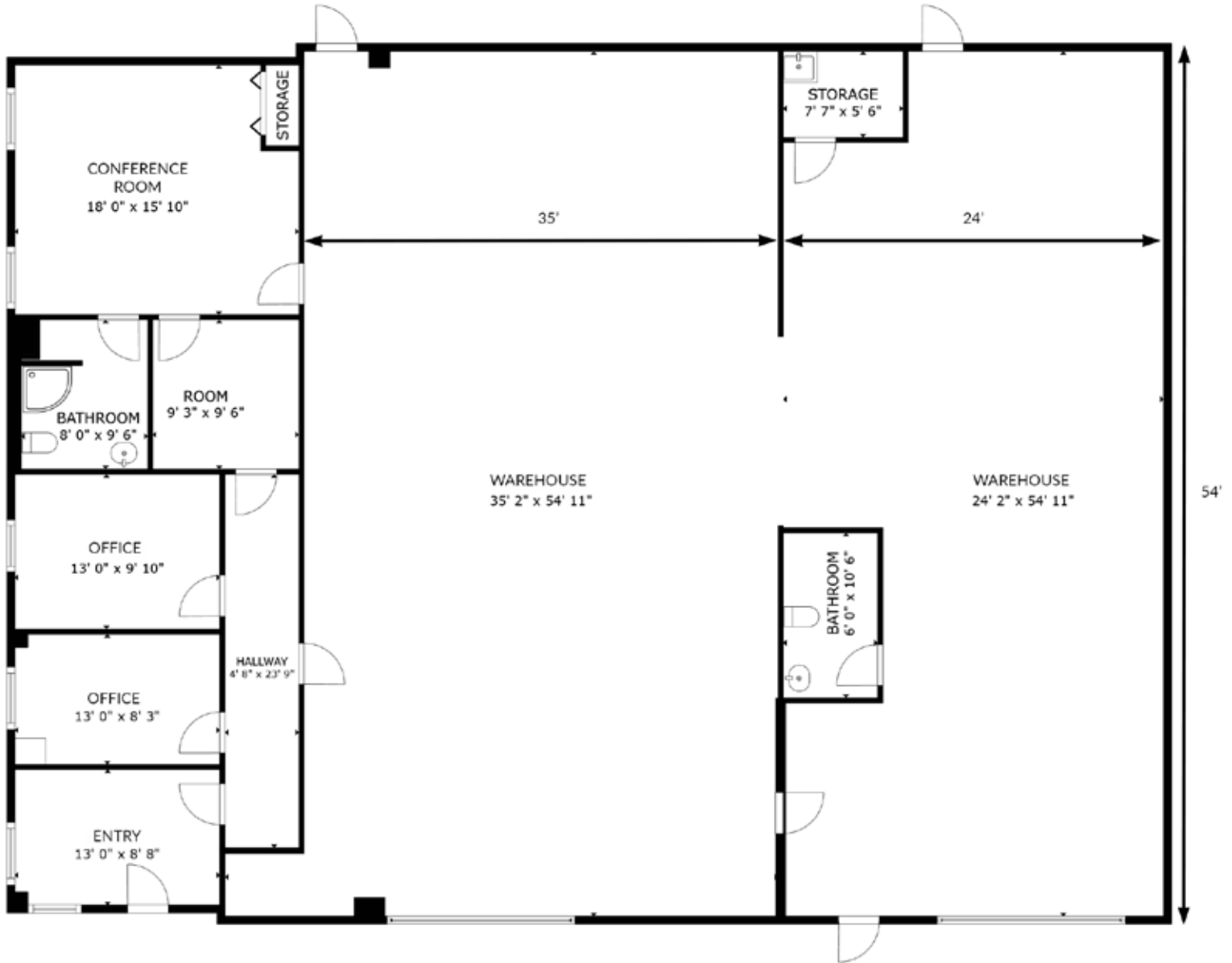
C: 719.337.0999

O: 719.630.2277

Holly@HoffLeigh.com

Industrial Condo for Lease

3625 BETTY DRIVE, COLORADO SPRINGS, CO 80917



FLOOR PLAN

Rev: March 27, 2024

Our Network Is Your Edge

All information is from sources deemed reliable and is subject to errors, omissions, change of price, rental, prior sale, and withdrawal without notice. Prospect should carefully verify each item of information contained herein.

Klete Keller

C: 719.888.9211

O: 719.630.2277

Keller@HoffLeigh.com

Holly Trinidad

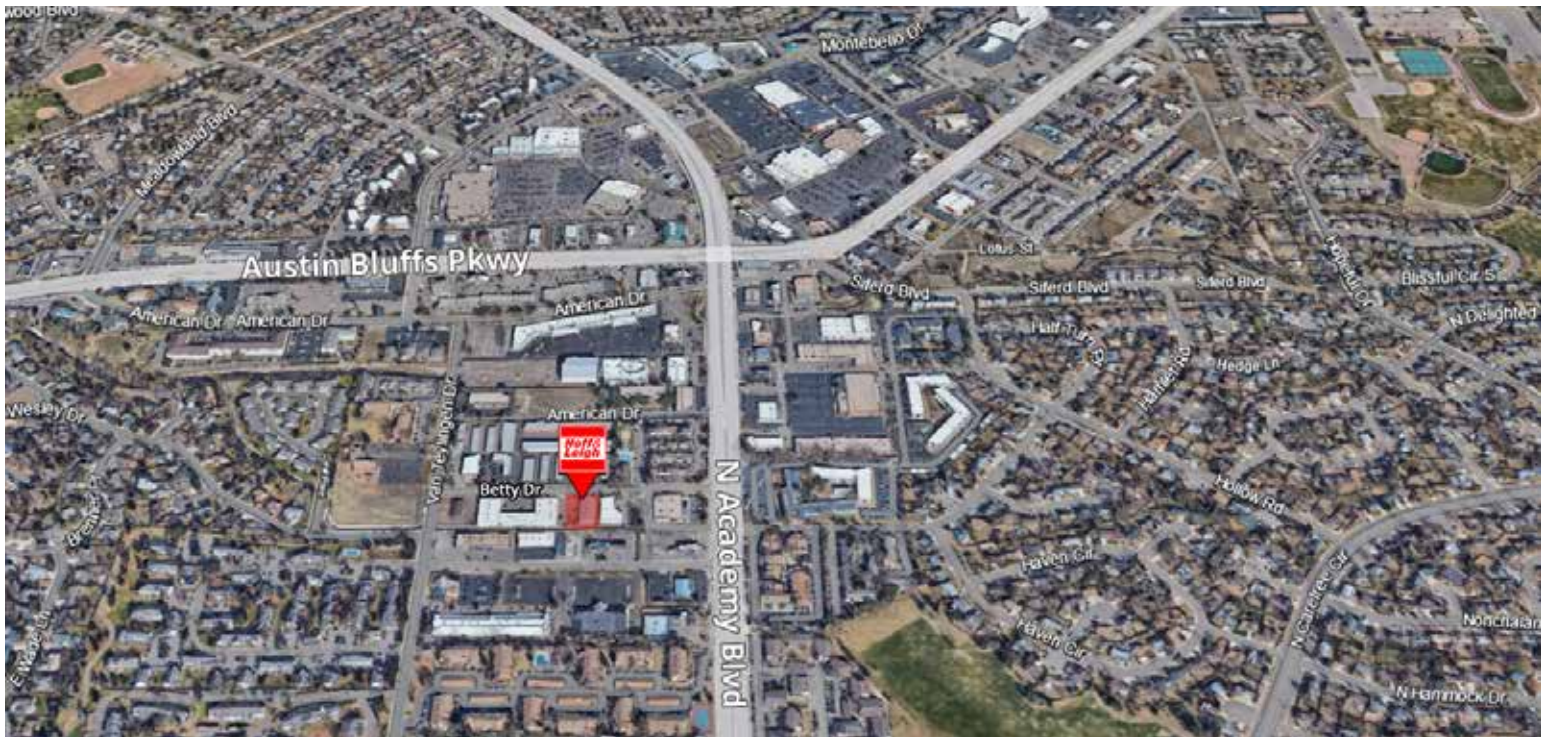
C: 719.337.0999

O: 719.630.2277

Holly@HoffLeigh.com

Industrial Condo for Lease

3625 BETTY DRIVE, COLORADO SPRINGS, CO 80917



Rev: March 27, 2024

Our Network Is Your Edge

All information is from sources deemed reliable and is subject to errors, omissions, change of price, rental, prior sale, and withdrawal without notice. Prospect should carefully verify each item of information contained herein.

Klete Keller

C: 719.888.9211

O: 719.630.2277

Keller@HoffLeigh.com

Holly Trinidad

C: 719.337.0999

O: 719.630.2277

Holly@HoffLeigh.com