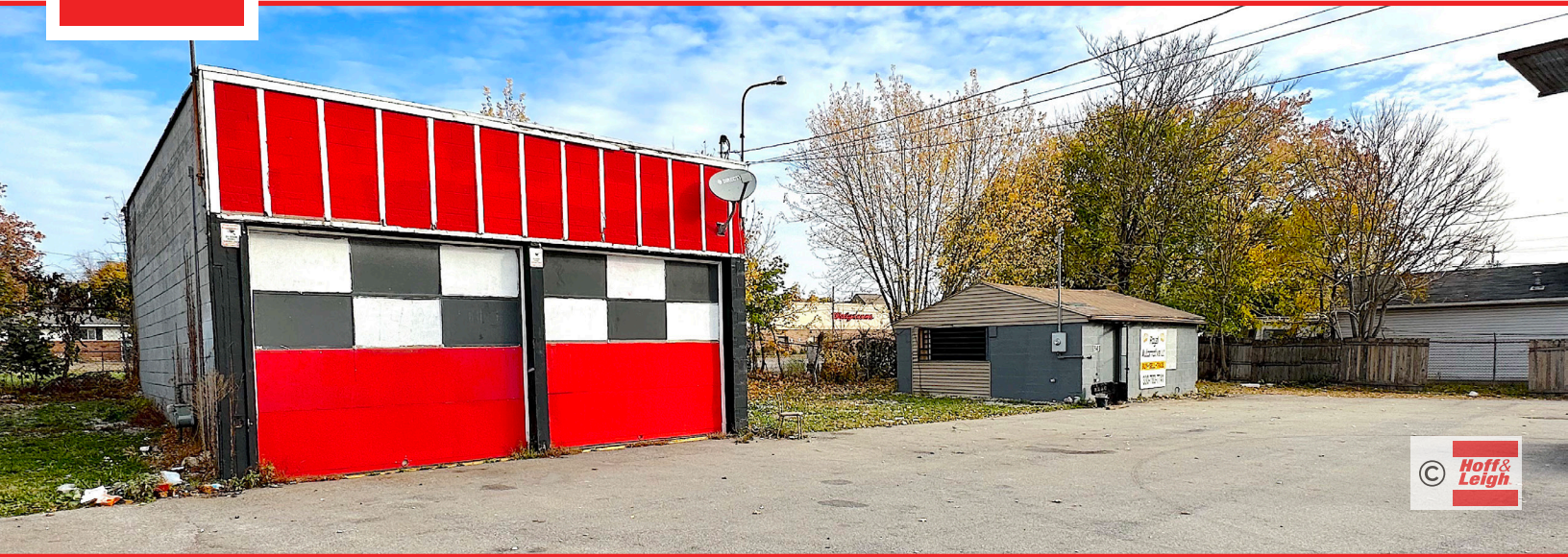


Retail Business Space for Lease

941 E WILBETH ROAD, AKRON, OH 44306



Overview

Car lot for lease in retail district of E. Wilbeth and Arlington Road. Property features fenced/gated lot with two buildings: 720 SF garage and 500 SF office. Maintenance garage features two 10' overhead doors with a bathroom and small office. Sales office features 500 SF with bathroom. Near corner of busy street with many retailers nearby!

Property Details



Lease Rate
\$2,000 / Month



Zoning
U-3 Retail Business



Space Available
1,220 SF

Rev: November 8, 2023

Our Network Is Your Edge

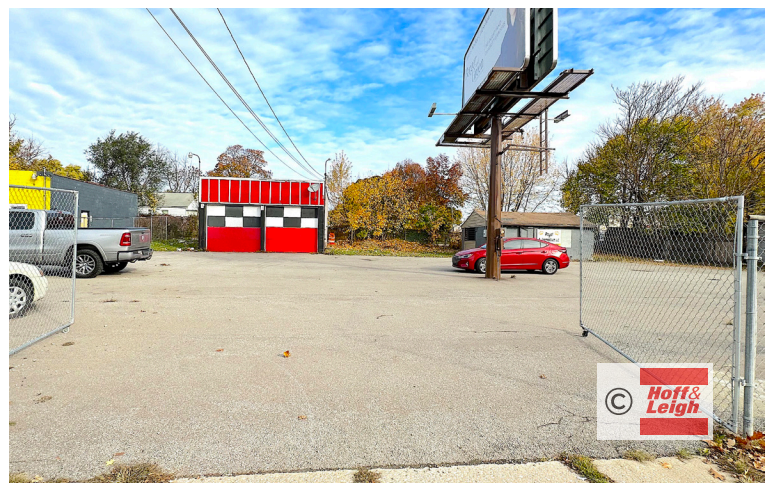
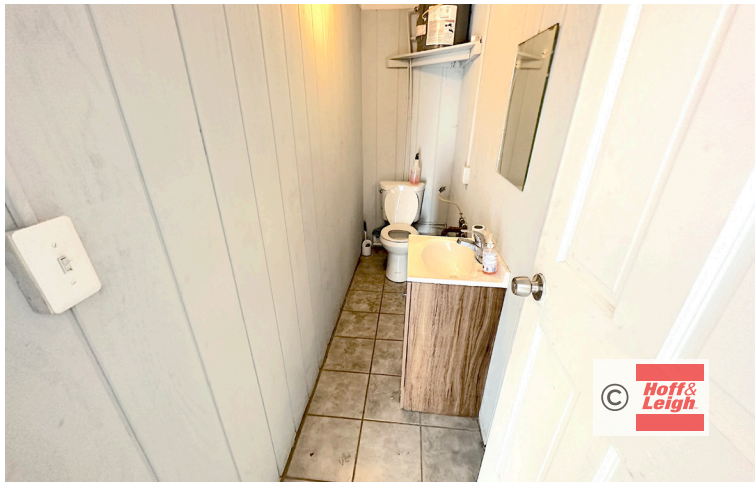
All information is from sources deemed reliable and is subject to errors, omissions, change of price, rental, prior sale, and withdrawal without notice. Prospect should carefully verify each item of information contained herein.

TJ Hollin
C: 330.618.8045
O: 330.940.9360
TJHollin@HoffLeigh.com



Retail Business Space for Lease

941 E WILBETH ROAD, AKRON, OH 44306



Rev: November 8, 2023



Our Network Is Your Edge

All information is from sources deemed reliable and is subject to errors, omissions, change of price, rental, prior sale, and withdrawal without notice. Prospect should carefully verify each item of information contained herein.

TJ Hollin

C: 330.618.8045

O: 330.940.9360

TJHollin@HoffLeigh.com

Retail Business Space for Lease

941 E WILBETH ROAD, AKRON, OH 44306

941 E Wilbeth Rd, Akron, Ohio, 44306

DEMOGRAPHICS



75,546
Population



35.4
Median Age



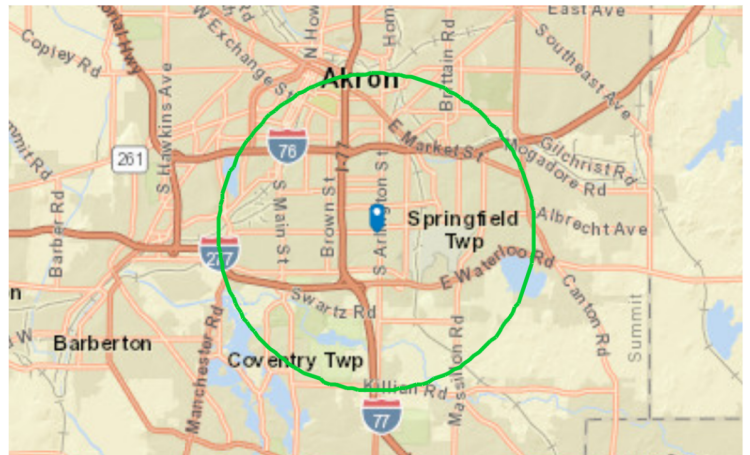
2.3
Average
Household Size



\$40,744
Median Household
Income

TRAFFIC COUNT

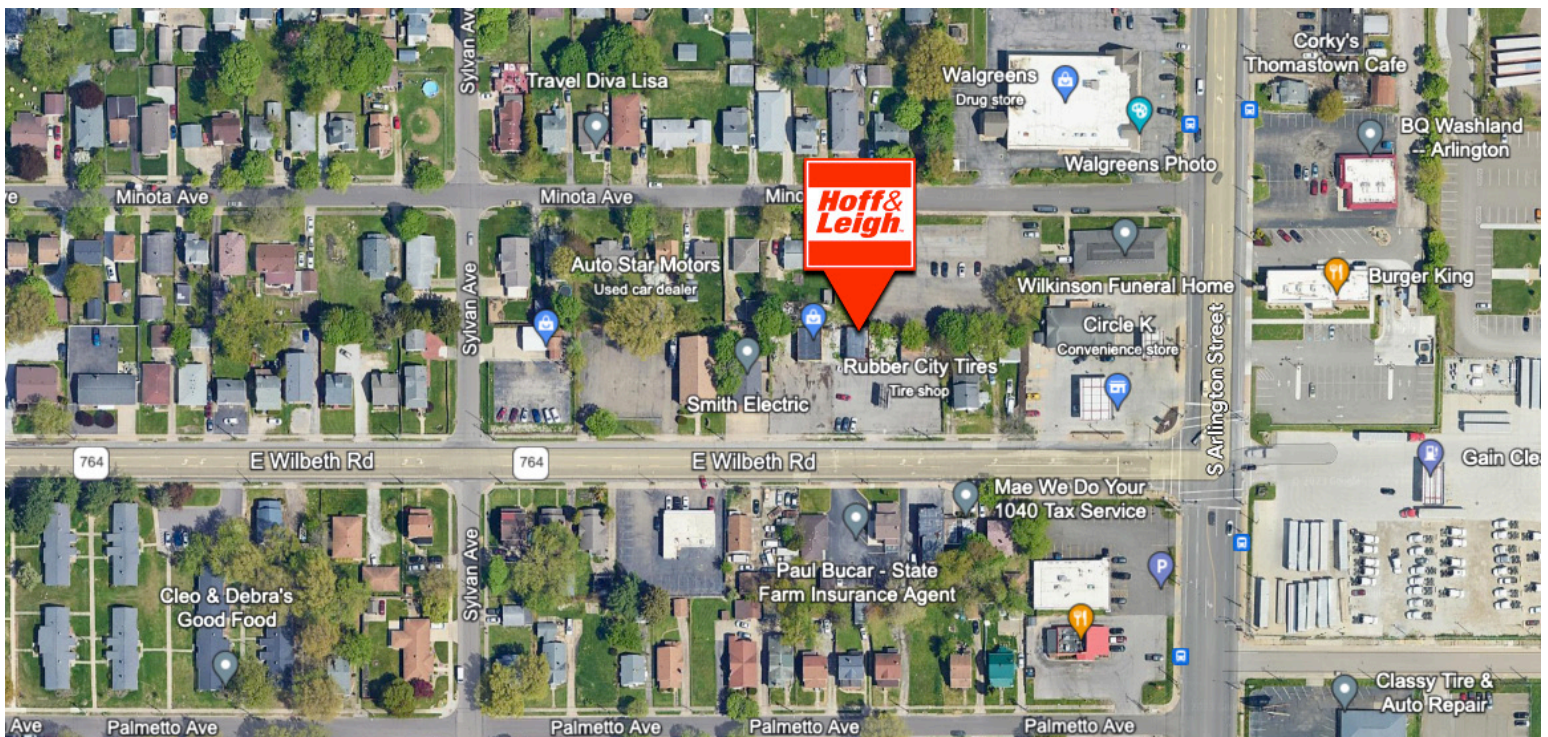
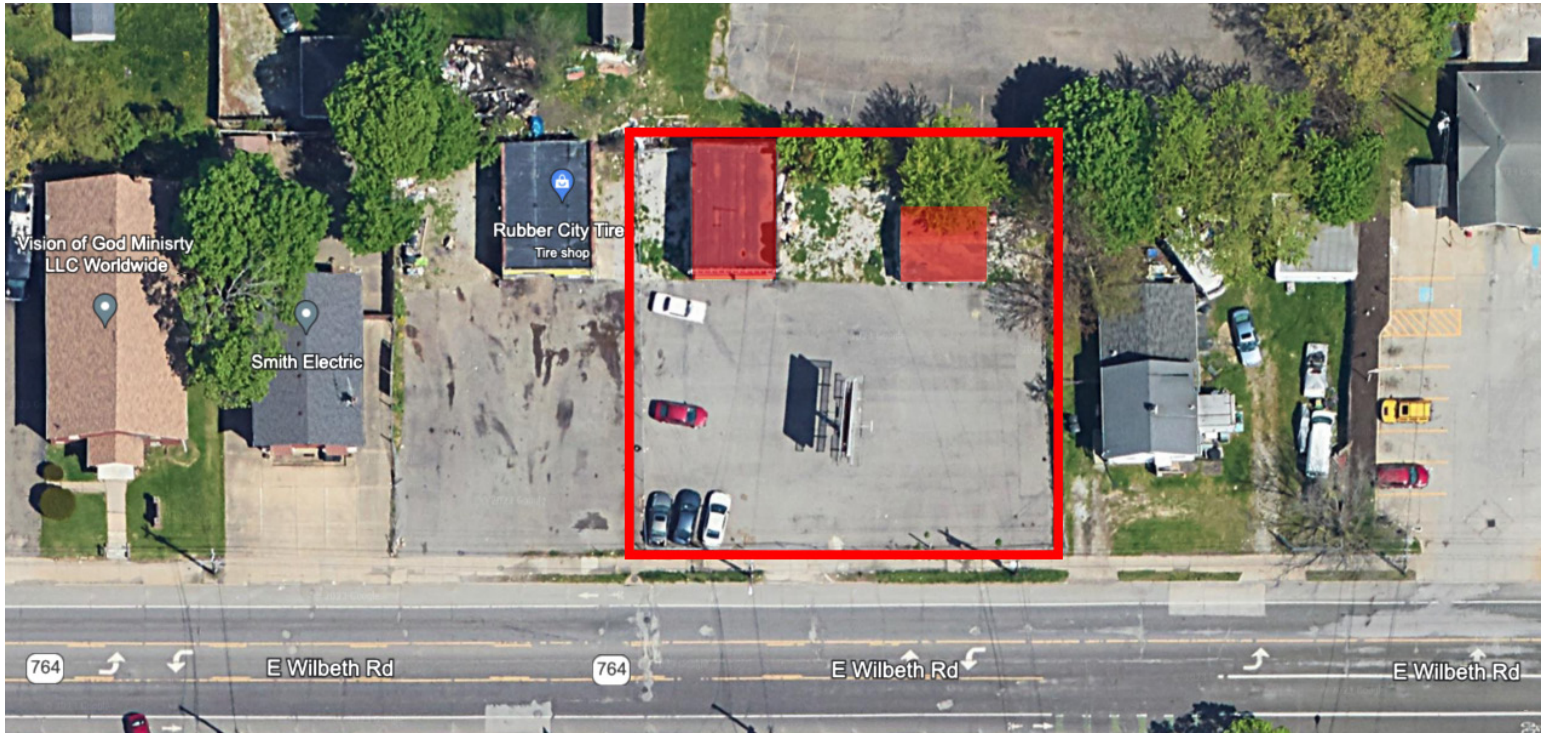
Cross street	Traffic 1	Distance
S Arlington St	24,180	0.1
E Wilbeth Rd	16,171	0.1
S Arlington St	496	0.1
Minota Ave	16,581	0.1
Lindsay Ave	14,256	0.2



Rev: November 8, 2023

Retail Business Space for Lease

941 E WILBETH ROAD, AKRON, OH 44306



Rev: November 8, 2023

Our Network Is Your Edge

All information is from sources deemed reliable and is subject to errors, omissions, change of price, rental, prior sale, and withdrawal without notice. Prospect should carefully verify each item of information contained herein.

TJ Hollin

C: 330.618.8045

O: 330.940.9360

TJHollin@HoffLeigh.com