

# Office Space for Lease

1710 JET STREAM DRIVE, COLORADO SPRINGS, CO 80921

[Explore Virtual Tour](#)

## Overview




1710 Jet Stream Drive is a newly renovated office featuring 6 private offices, reception area, break room, and even an elevator! Parking is plentiful, and you can build great synergy by sharing the reception and break room with an established ophthalmologist whose medical office is immediately adjacent to the reception area, which he uses on a part-time basis. With flexible terms, you can move in right away and immediately start growing your medical practice or healthcare-related business. Don't miss out on this amazing opportunity to become part of the growing North Colorado Springs healthcare community. Please call Guy Cox for more information and to set up a tour.

Suite:	Size:	Price:
215-B	1,500 SF	\$30.00 SF/YR (NNN)

## Highlights

- Move in Ready Office/Medical Office
- Ample Parking
- Flexible Terms
- Elevator
- Reception Area and Break Room
- Build Business Synergy With Established Ophthalmologist
- 6 Private Offices

## Property Details

-  **Lease Rate**  
\$30.00 SF/YR (NNN)
-  **Space Available**  
1,500 SF
-  **Zoning**  
PIP1

10/20/23

### Our Network Is Your Edge

All information is from sources deemed reliable and is subject to errors, omissions, change of price, rental, prior sale, and withdrawal without notice. Prospect should carefully verify each item of information contained herein.

### Guy Cox

C: 719.357.7494  
O: 719.630.2277  
GCox@HoffLeigh.com

### Chris Myers

C: 719.650.4627  
O: 719.630.2277  
CMyers@HoffLeigh.com





# Office Space for Lease

1710 JET STREAM DRIVE, COLORADO SPRINGS, CO 80921



10/20/23



## Our Network Is Your Edge

All information is from sources deemed reliable and is subject to errors, omissions, change of price, rental, prior sale, and withdrawal without notice. Prospect should carefully verify each item of information contained herein.

## Guy Cox

C: 719.357.7494

O: 719.630.2277

GCox@HoffLeigh.com

## Chris Myers

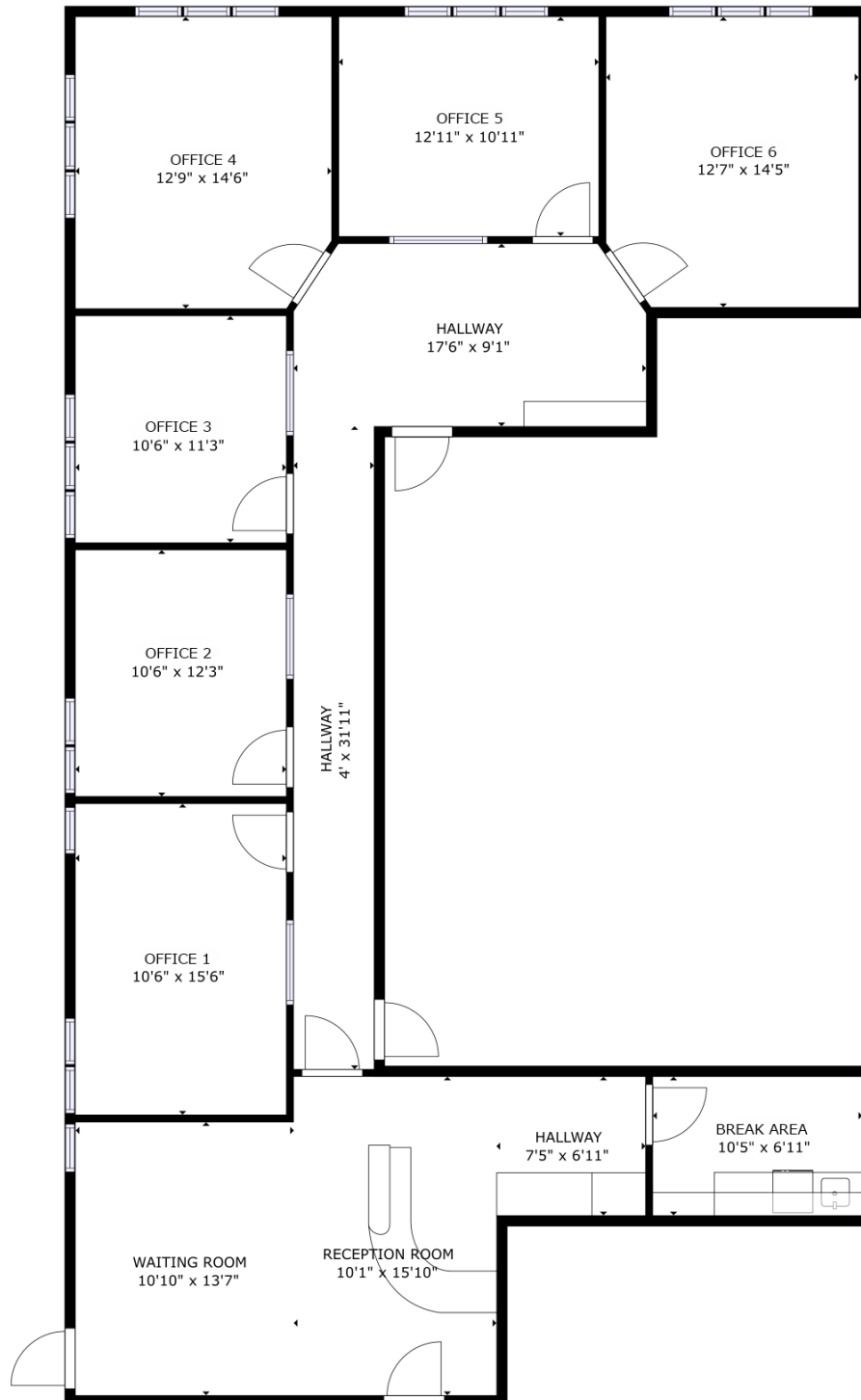
C: 719.650.4627

O: 719.630.2277

CMyers@HoffLeigh.com

# Office Space for Lease

1710 JET STREAM DRIVE, COLORADO SPRINGS, CO 80921



10/20/23

## Our Network Is Your Edge

All information is from sources deemed reliable and is subject to errors, omissions, change of price, rental, prior sale, and withdrawal without notice. Prospect should carefully verify each item of information contained herein.

## Guy Cox

C: 719.357.7494  
O: 719.630.2277  
GCox@HoffLeigh.com

## Chris Myers

C: 719.650.4627  
O: 719.630.2277  
CMyers@HoffLeigh.com



# Office Space for Lease

1710 JET STREAM DRIVE, COLORADO SPRINGS, CO 80921

1710 Jet Stream Dr, Colorado Springs, Colorado, 80921

## DEMOGRAPHICS



34,529  
Population



37.3  
Median Age



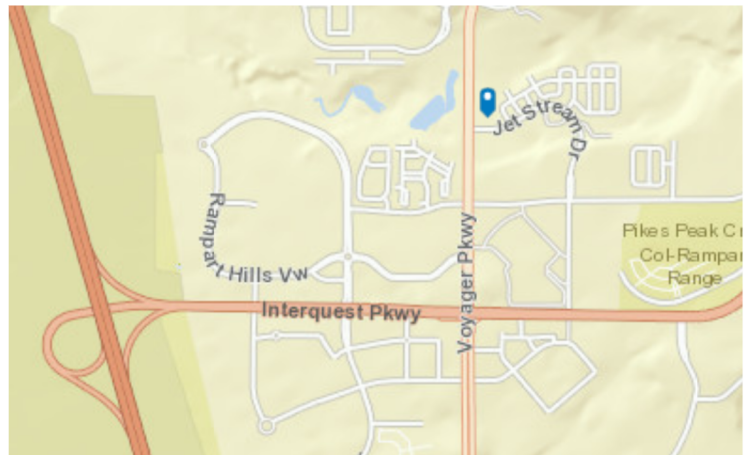
2.8  
Average  
Household Size



\$129,754  
Median Household  
Income

## TRAFFIC COUNT

Cross street	Traffic 1	Distance
Sybilla Ln	22,902	0.1
New Life Dr	18,000	0.2
Ridgeline Dr	16,195	0.2
Jet Stream Dr	8,153	0.3
New Life Dr	1,226	0.3



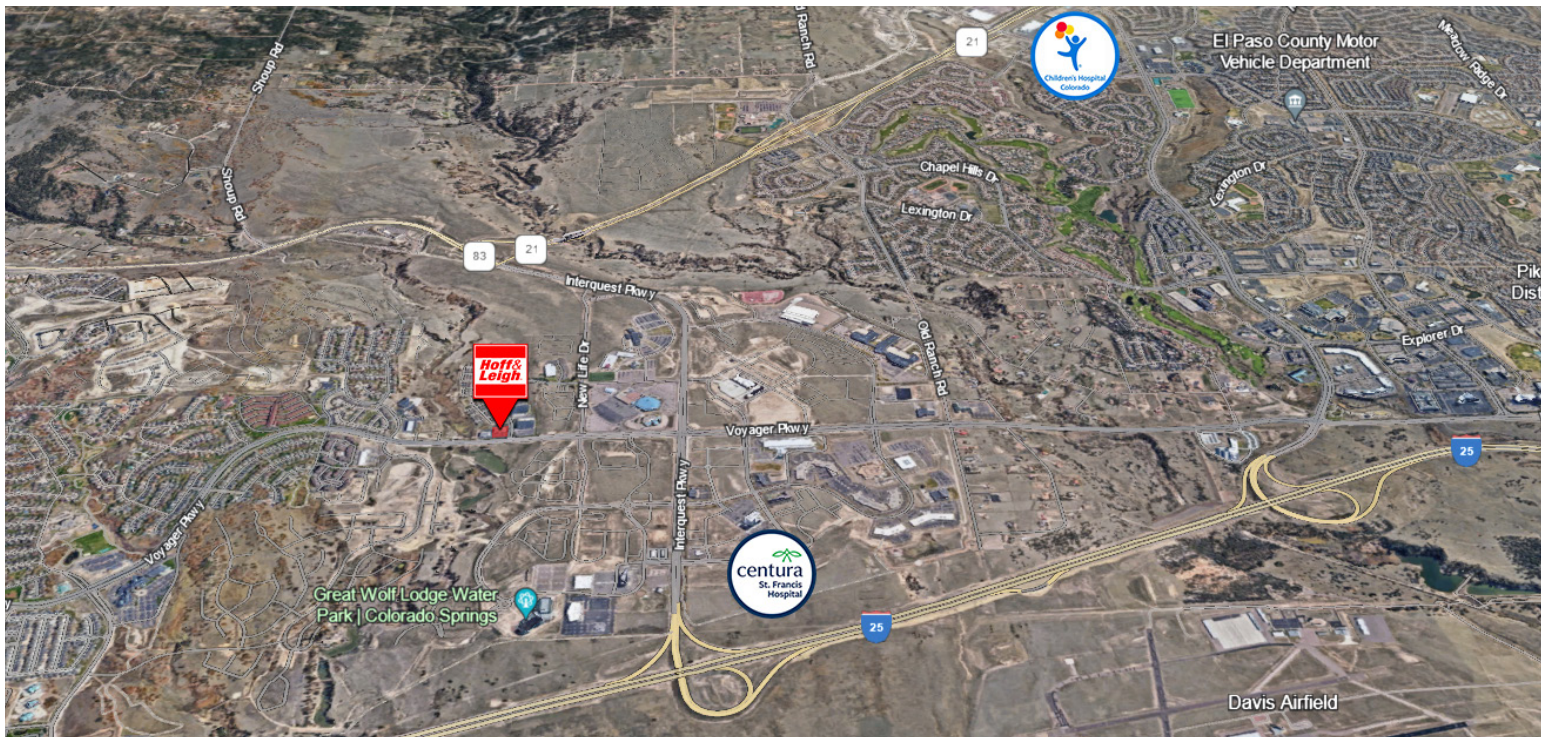
10/20/23





# Office Space for Lease

1710 JET STREAM DRIVE, COLORADO SPRINGS, CO 80921



10/20/23



## Our Network Is Your Edge

All information is from sources deemed reliable and is subject to errors, omissions, change of price, rental, prior sale, and withdrawal without notice. Prospect should carefully verify each item of information contained herein.

## Guy Cox

C: 719.357.7494

O: 719.630.2277

GCoX@HoffLeigh.com

## Chris Myers

C: 719.650.4627

O: 719.630.2277

CMyers@HoffLeigh.com