

Office Space for Lease

5990 KIPLING PARKWAY, ARVADA, CO 80004



Overview

Suite 001:

1,400 SF x \$17 / SF = \$1,975 / month FS Gross lease. 3 offices, windows, kitchenette, sink, storage room w/ shelving, space for minifridge/microwave, cabinets

Suite 003:

550 SF x \$17 / SF = \$775 / month FS Gross lease. 2 offices, 2 rooms w/ separate entrances, windows, storage room. 3 desks & 5 cabinets possibly included

Suite:	Size:	Lease Rate:
001	1,400 SF	\$1,975 / Month (Gross)
003	550 SF	\$775 / Month (Gross)

Highlights

- 24 Surface Parking Spaces
- Elevator
- Daily Building Cleaning
- 24 Hour Access
- 2 Bathrooms Each Floor

Property Details



Lease Rate

\$17.00 SF/YR (Gross)



Space Available

550 - 1,400 SF

Rev: December 18, 2023

Our Network Is Your Edge

All information is from sources deemed reliable and is subject to errors, omissions, change of price, rental, prior sale, and withdrawal without notice. Prospect should carefully verify each item of information contained herein.

Michael Crawford

C: 720.683.0399

O: 720.572.5187

MCrawford@HoffLeigh.com



Office Space for Lease

5990 KIPLING PARKWAY, ARVADA, CO 80004

SUITE 001



Rev: December 18, 2023



Our Network Is Your Edge

All information is from sources deemed reliable and is subject to errors, omissions, change of price, rental, prior sale, and withdrawal without notice. Prospect should carefully verify each item of information contained herein.

Michael Crawford

C: 720.683.0399

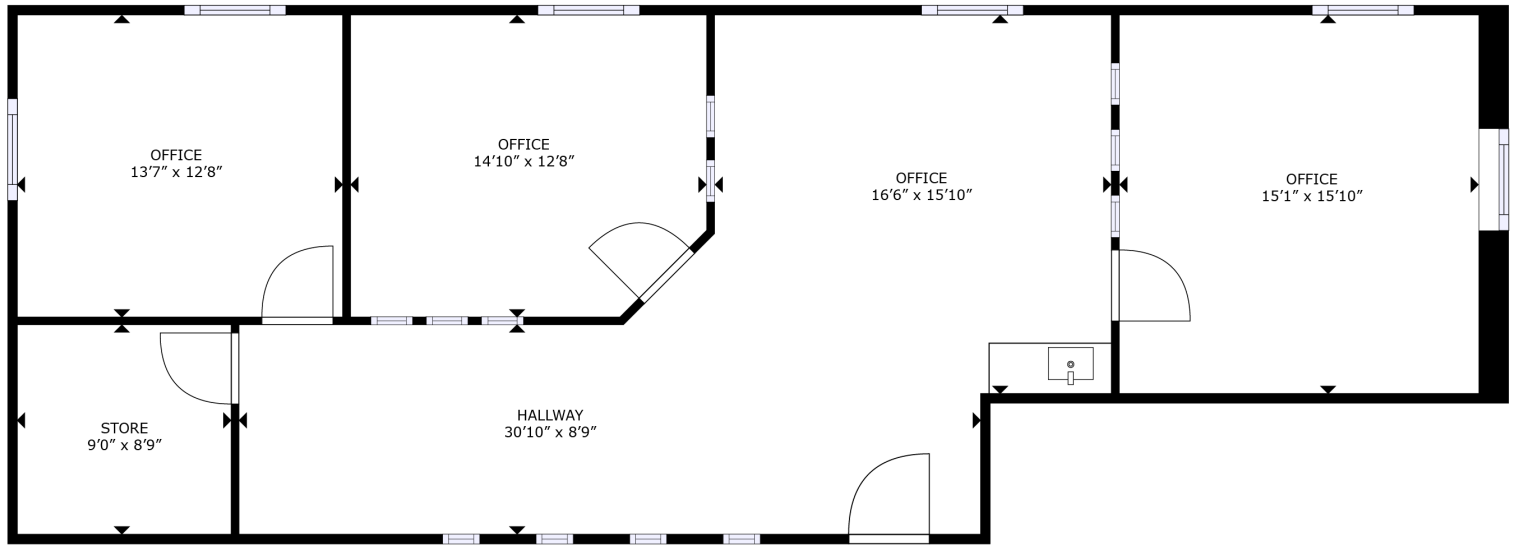
O: 720.572.5187

MCrawford@HoffLeigh.com

Office Space for Lease

5990 KIPLING PARKWAY, ARVADA, CO 80004

SUITE 001



FLOOR PLAN

Rev: December 18, 2023

Our Network Is Your Edge

All information is from sources deemed reliable and is subject to errors, omissions, change of price, rental, prior sale, and withdrawal without notice. Prospect should carefully verify each item of information contained herein.

Michael Crawford

C: 720.683.0399

O: 720.572.5187

MCrawford@HoffLeigh.com



Office Space for Lease

5990 KIPLING PARKWAY, ARVADA, CO 80004

SUITE 003



Rev: December 18, 2023



Our Network Is Your Edge

All information is from sources deemed reliable and is subject to errors, omissions, change of price, rental, prior sale, and withdrawal without notice. Prospect should carefully verify each item of information contained herein.

Michael Crawford

C: 720.683.0399

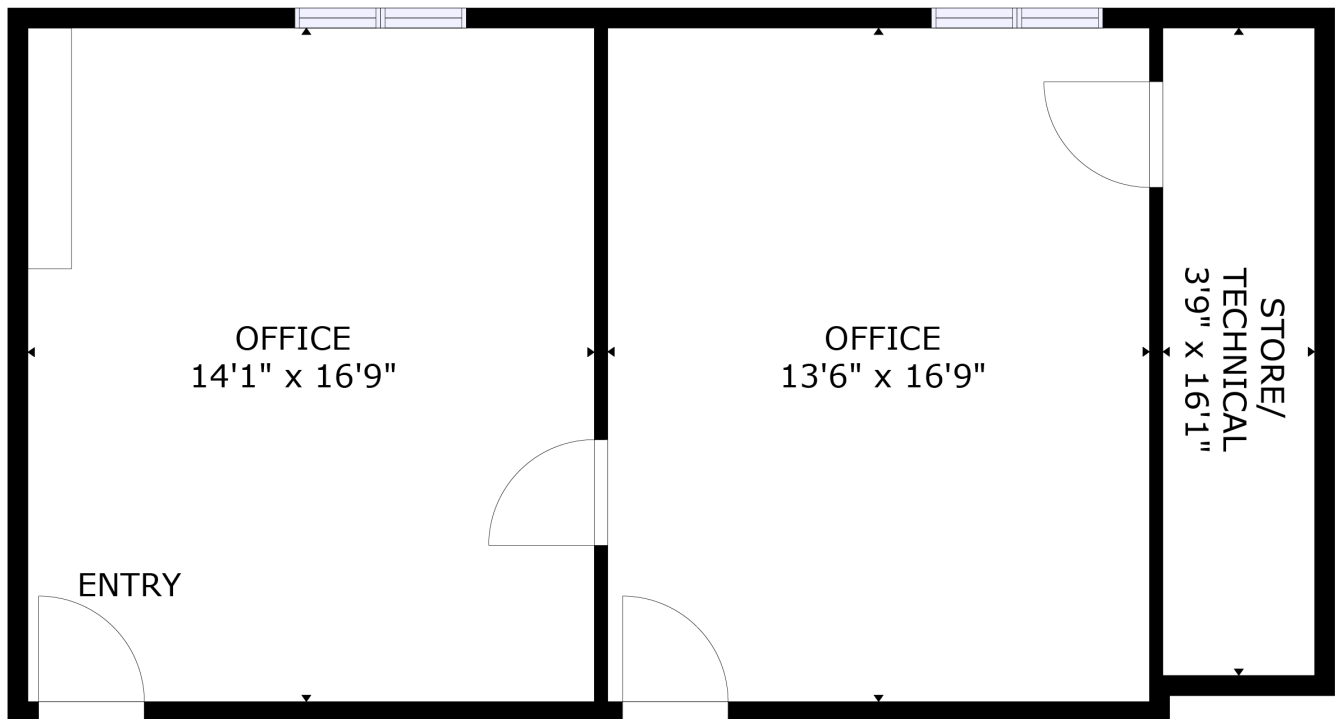
O: 720.572.5187

MCrawford@HoffLeigh.com

Office Space for Lease

5990 KIPLING PARKWAY, ARVADA, CO 80004

SUITE 003



Rev: December 18, 2023

Our Network Is Your Edge

All information is from sources deemed reliable and is subject to errors, omissions, change of price, rental, prior sale, and withdrawal without notice. Prospect should carefully verify each item of information contained herein.

Michael Crawford

C: 720.683.0399

O: 720.572.5187

MCrawford@HoffLeigh.com

Office Space for Lease

5990 KIPLING PARKWAY, ARVADA, CO 80004

5990 Kipling St, Arvada, Colorado, 80004

DEMOGRAPHICS



107,587
Population



43.3
Median Age



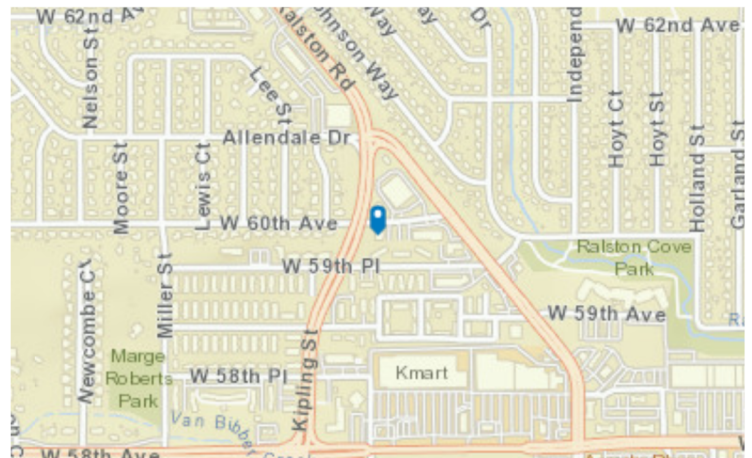
2.4
Average
Household Size



\$88,493
Median Household
Income

TRAFFIC COUNT

Cross street	Traffic 1	Distance
W 59th Ave	5,645	0.1
Allendale Dr	6,398	0.1
Kipling Pkwy	1,890	0.1
W 59th Ave	20,358	0.2
W 60th Ave	21,277	0.2

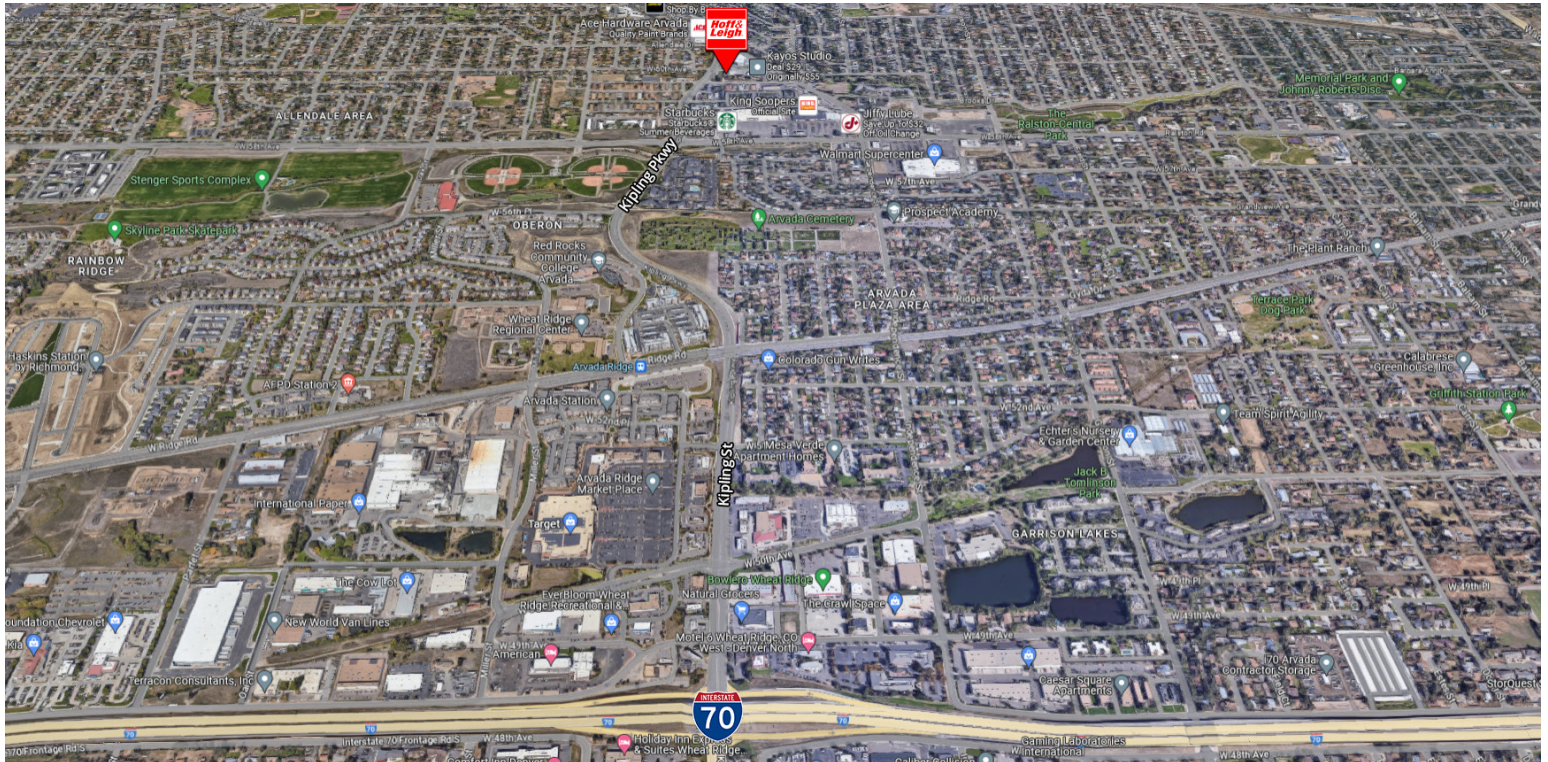


Rev: December 18, 2023



Office Space for Lease

5990 KIPLING PARKWAY, ARVADA, CO 80004



Rev: December 18, 2023



Our Network Is Your Edge

All information is from sources deemed reliable and is subject to errors, omissions, change of price, rental, prior sale, and withdrawal without notice. Prospect should carefully verify each item of information contained herein.

Michael Crawford

C: 720.683.0399

O: 720.572.5187

MCrawford@HoffLeigh.com