

# Office Building for Lease

2811 CHESTER AVENUE, CLEVELAND, OH 44114



## A&G OFFICE FURNITURE



### Overview

Amazing location and opportunity to have a newer modern office, fully furnished, with parking. The first and second floor combined offers approximately 5,000 SF with window lined frontage on Chester Avenue.

This space is within the well-know A&G Furniture Building, offering to fully furnish the space and allow access through their warehouse to enter the office area.

Additional, more direct access, can be utilized directly at the front doors off Chester Avenue.




Note, access to the front door is around the building from the parking lot or parking temporarily on the street.

It's worth a look, call today to schedule a showing.

### Highlights

- Excellent Location Directly Off I-90
- All Inclusive Gross Lease
- Free Parking
- Fully Furnished
- First Floor Space
- Chester Avenue Window Lined Office Frontage

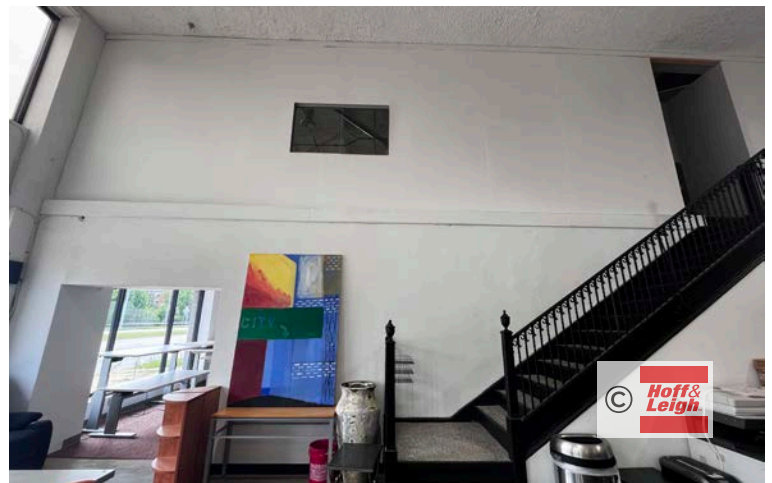
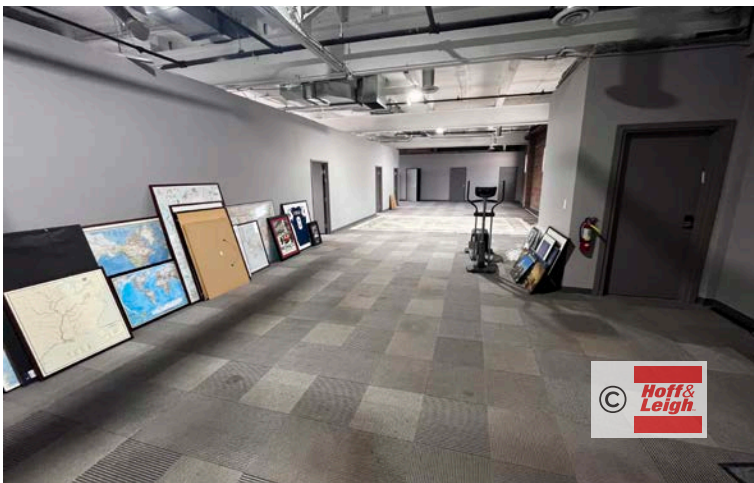
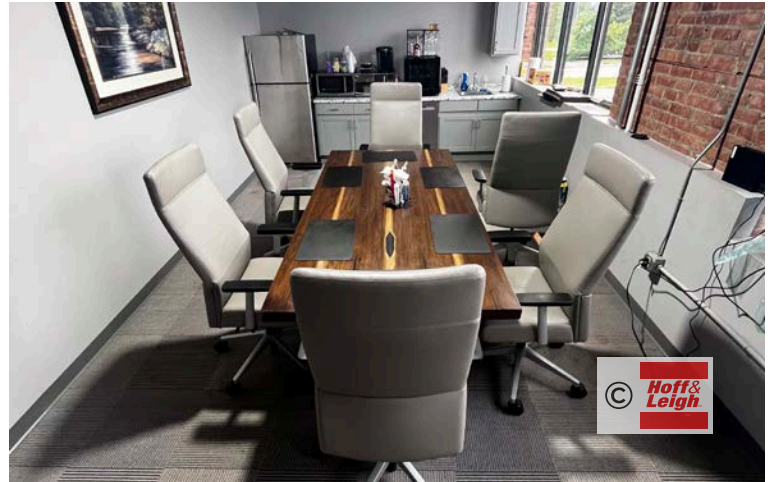
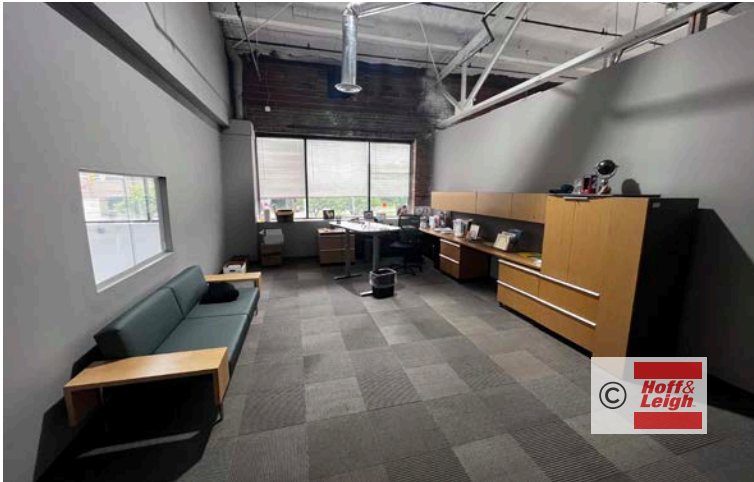
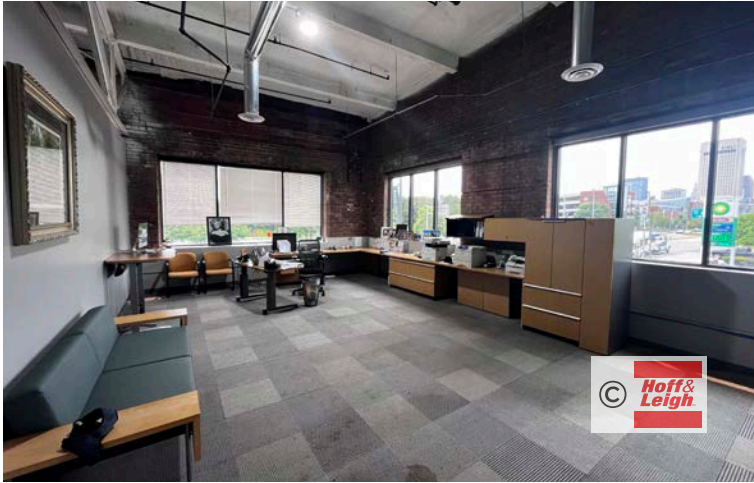
### Property Details

-  **Lease Rate**  
\$14.50 SF/YR (Gross)
-  **Space Available**  
4,248 - 5,000 SF
-  **Building Size**  
20,000 SF

Rev: August 14, 2023

# Office Building for Lease

2811 CHESTER AVENUE, CLEVELAND, OH 44114



Rev: August 14, 2023

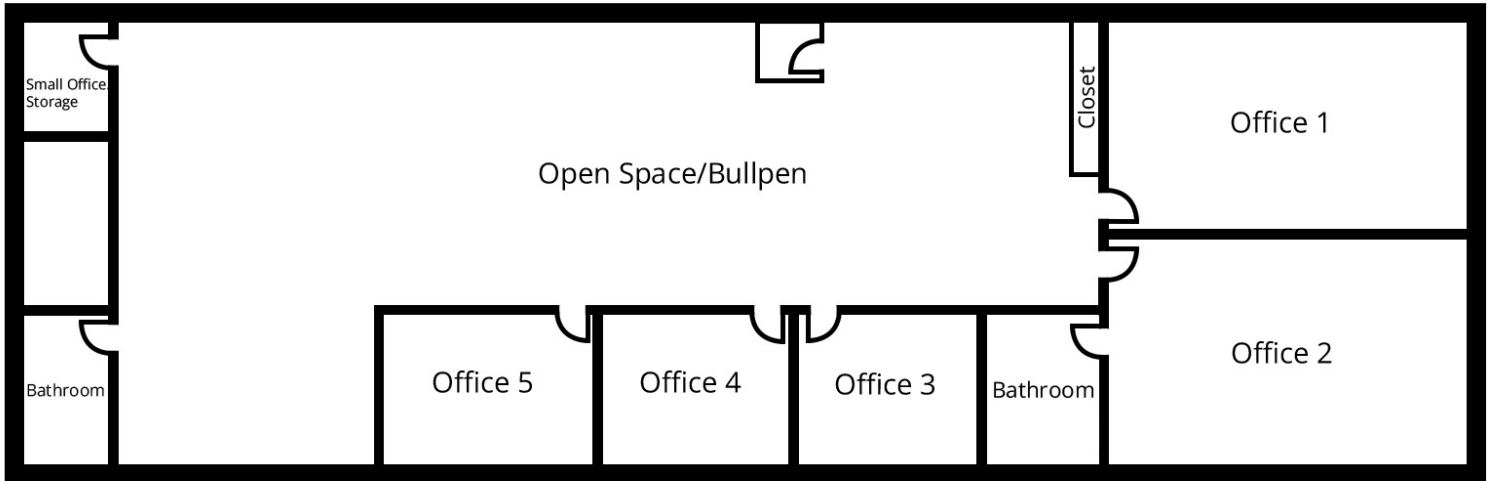


# Office Building for Lease

2811 CHESTER AVENUE, CLEVELAND, OH 44114



Walkway to Office from Parking Lot



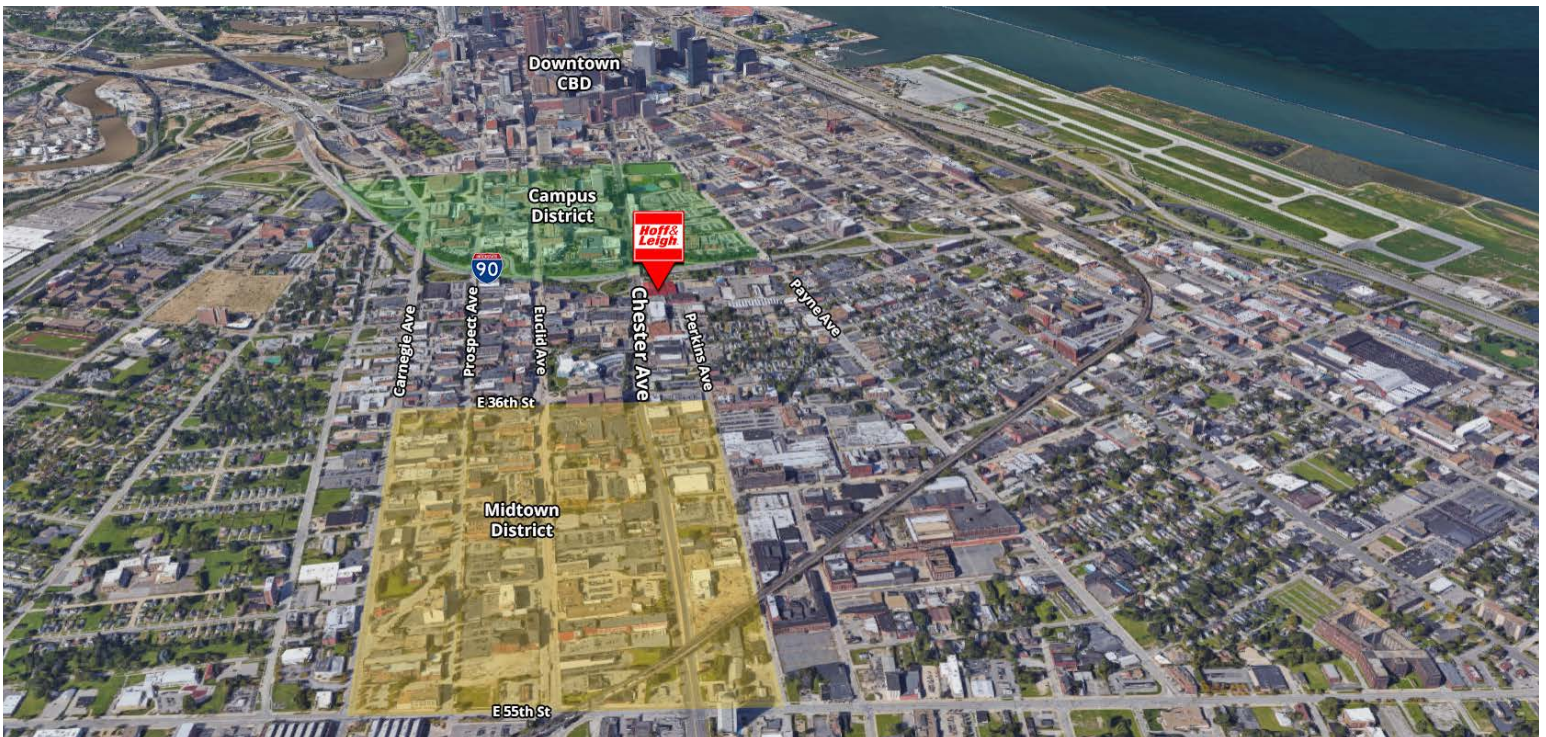
Rev: August 14, 2023





# Office Building for Lease

2811 CHESTER AVENUE, CLEVELAND, OH 44114



Rev: August 14, 2023



## Our Network Is Your Edge

All information is from sources deemed reliable and is subject to errors, omissions, change of price, rental, prior sale, and withdrawal without notice. Prospect should carefully verify each item of information contained herein.

**Joe Zumpano**

C: 330.990.0847

O: 330.940.9360

JZumpano@HoffLeigh.com