

Industrial Condo for Lease

712 CLARK PLACE, COLORADO SPRINGS, CO 80915







Overview

- Warehouse / Office Condo
- Large Drive-In Door (12'w x 14'h)
- High Ceiling
- 1,800 SF Warehouse
- 3-Phase Power
- 3 Offices and a Reception Area

Unit:	Size:	Price:
180	2,400 SF	\$13.00 SF/YR (+ \$4.66 NNN)

Property Details

-  **Lease Rate**
\$13.00 SF/YR (+ \$4.66 NNN)
-  **Space Available**
2,400 SF
-  **Building Size**
25,000 SF
-  **Zoning**
BP

Rev: May 7, 2026



Industrial Condo for Lease

712 CLARK PLACE, COLORADO SPRINGS, CO 80915



Rev: May 7, 2026



Our Network Is Your Edge

All information is from sources deemed reliable and is subject to errors, omissions, change of price, rental, prior sale, and withdrawal without notice. Prospect should carefully verify each item of information contained herein.

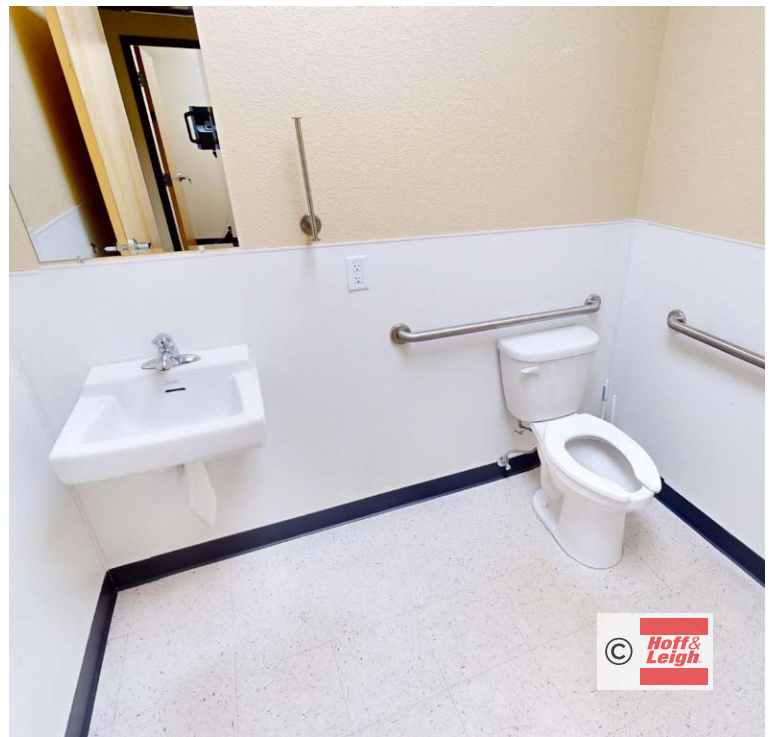
Kenny Juarbe
C: 719.237.6065
O: 719.630.2277
KJuarbe@HoffLeigh.com

Klete Keller
C: 719.428.8683
O: 970.210.1011
Keller@HoffLeigh.com



Industrial Condo for Lease

712 CLARK PLACE, COLORADO SPRINGS, CO 80915



Rev: May 7, 2026



Our Network Is Your Edge

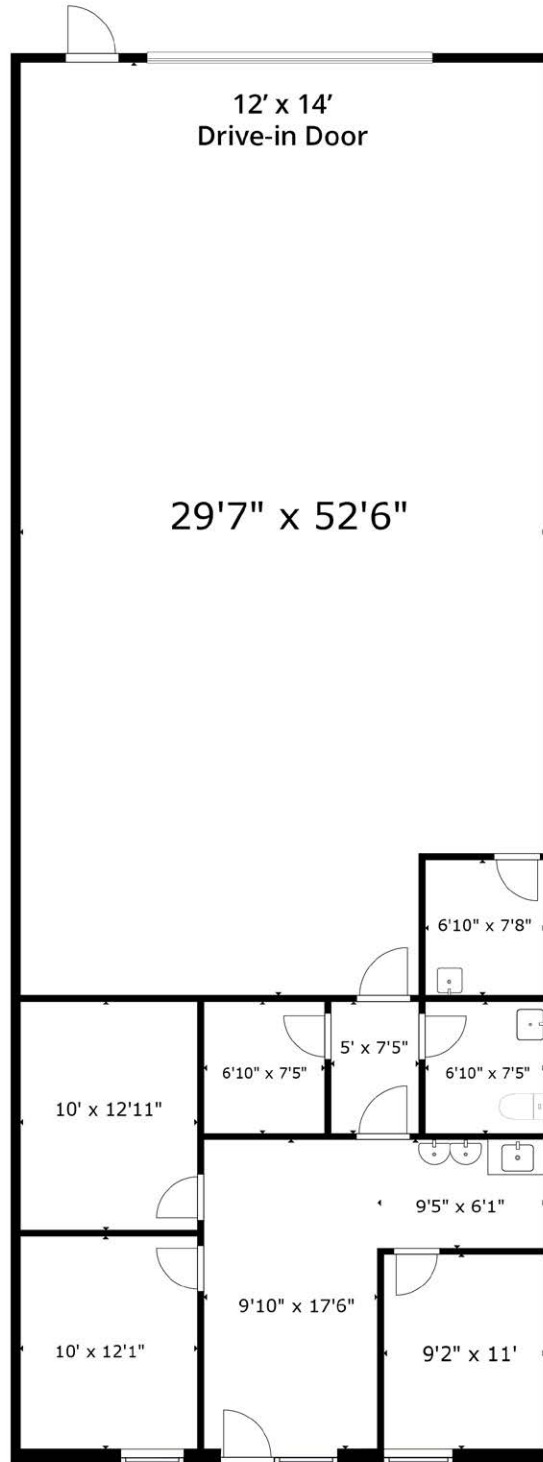
All information is from sources deemed reliable and is subject to errors, omissions, change of price, rental, prior sale, and withdrawal without notice. Prospect should carefully verify each item of information contained herein.

Kenny Juarbe
C: 719.237.6065
O: 719.630.2277
KJuarbe@HoffLeigh.com

Klete Keller
C: 719.428.8683
O: 970.210.1011
Keller@HoffLeigh.com

Industrial Condo for Lease

712 CLARK PLACE, COLORADO SPRINGS, CO 80915



Rev: May 7, 2026



Our Network Is Your Edge

All information is from sources deemed reliable and is subject to errors, omissions, change of price, rental, prior sale, and withdrawal without notice. Prospect should carefully verify each item of information contained herein.

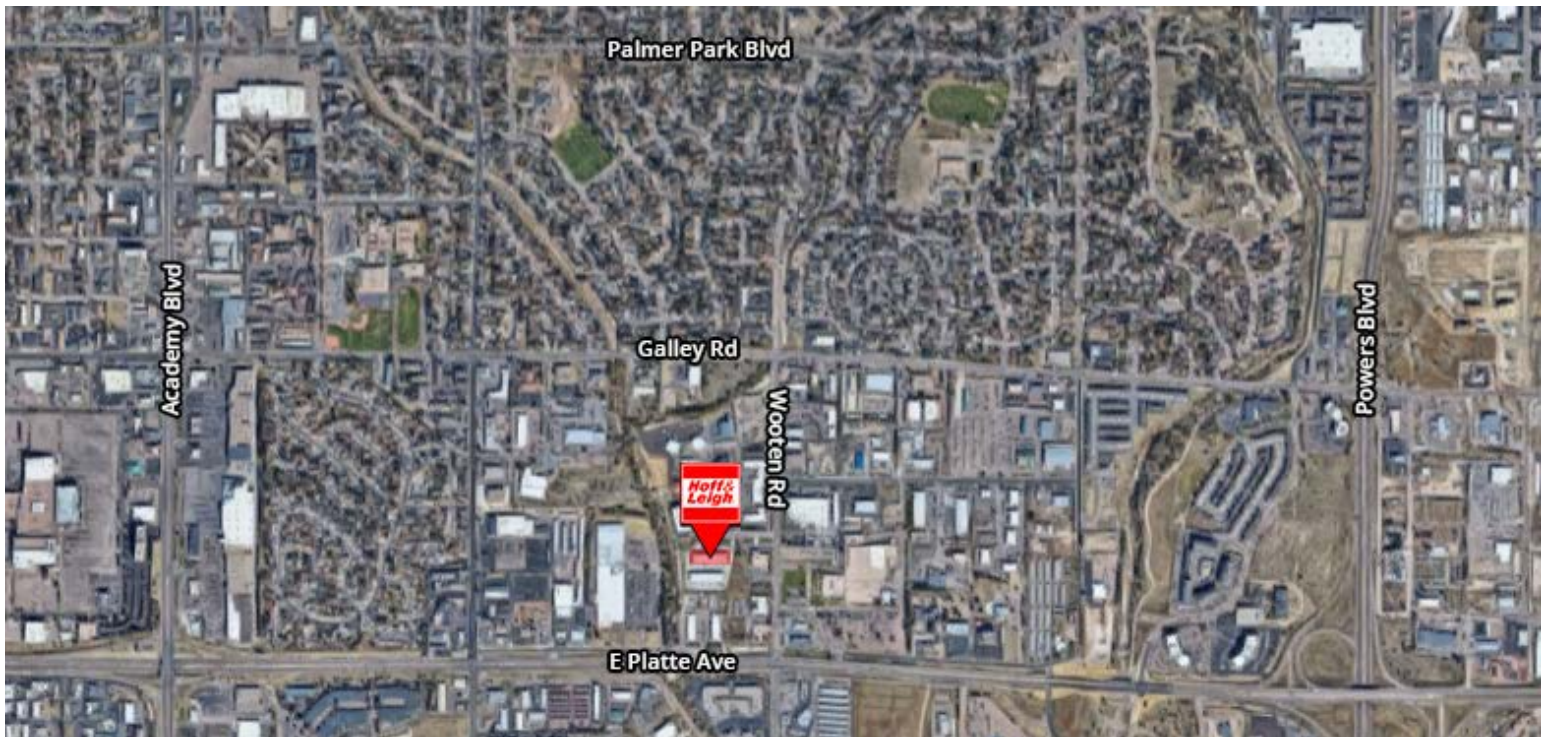
Kenny Juarbe
C: 719.237.6065
O: 719.630.2277
KJuarbe@HoffLeigh.com

Klete Keller
C: 719.428.8683
O: 970.210.1011
Keller@HoffLeigh.com



Industrial Condo for Lease

712 CLARK PLACE, COLORADO SPRINGS, CO 80915



Rev: May 7, 2026



Our Network Is Your Edge

All information is from sources deemed reliable and is subject to errors, omissions, change of price, rental, prior sale, and withdrawal without notice. Prospect should carefully verify each item of information contained herein.

Kenny Juarbe
C: 719.237.6065
O: 719.630.2277
KJuarbe@HoffLeigh.com

Klete Keller
C: 719.428.8683
O: 970.210.1011
Keller@HoffLeigh.com