

Flex Space for Lease

727 EAST TURKEYFOOT LAKE ROAD, AKRON, OH 44319



Overview

Class A flex space available for lease in the City of Green. Located 1/4 mile west of S Arlington Road, this 6,000 SF endcap flex unit offers high ceilings, two drive-in doors, one dock door, and plenty of parking near the front entrance. There is also space available on the monument sign at the street if desired. Please call Ed Jesson to tour the space.

Unit:

N

Size:

6,000 SF

Price:

\$11.00 SF/YR (NNN)

Highlights

- Class A Flex Space
- Endcap of Building
- Two Drive-In Doors
- One Dock Door
- Close to I-77
- Signage on Monument Sign at Street

Property Details



Lease Rate
\$11.00 SF/YR
(NNN)



Space Available
6,000 SF



Building Size
27,860 SF



Lot Size
3.85 Acres



Zoning
B-1

Rev: June 23, 2023



Flex Space for Lease

727 EAST TURKEYFOOT LAKE ROAD, AKRON, OH 44319



Rev: June 23, 2023



Our Network Is Your Edge

All information is from sources deemed reliable and is subject to errors, omissions, change of price, rental, prior sale, and withdrawal without notice. Prospect should carefully verify each item of information contained herein.

Ed Jesson

C: 330.760.4494

O: 330.940.9360

Ejesson@HoffLeigh.com

Flex Space for Lease

727 EAST TURKEYFOOT LAKE ROAD, AKRON, OH 44319

727 E Turkeyfoot Lake Rd, Akron, Ohio, 44319 2

DEMOGRAPHICS



3,167

Population



Median Age



Average
Household Size

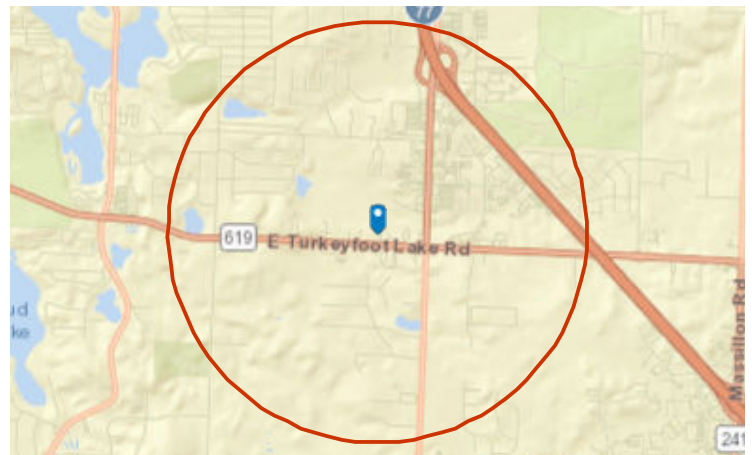


\$97,495

Median Household
Income

TRAFFIC COUNT

Cross street	Traffic 1	Distance
Marathon Aly	12,420	0.1
Interstate Pkwy	17,070	0.3
September Dr	12,682	0.4
Charleston Dr	2,739	0.6
Southwood Dr	12,770	0.6

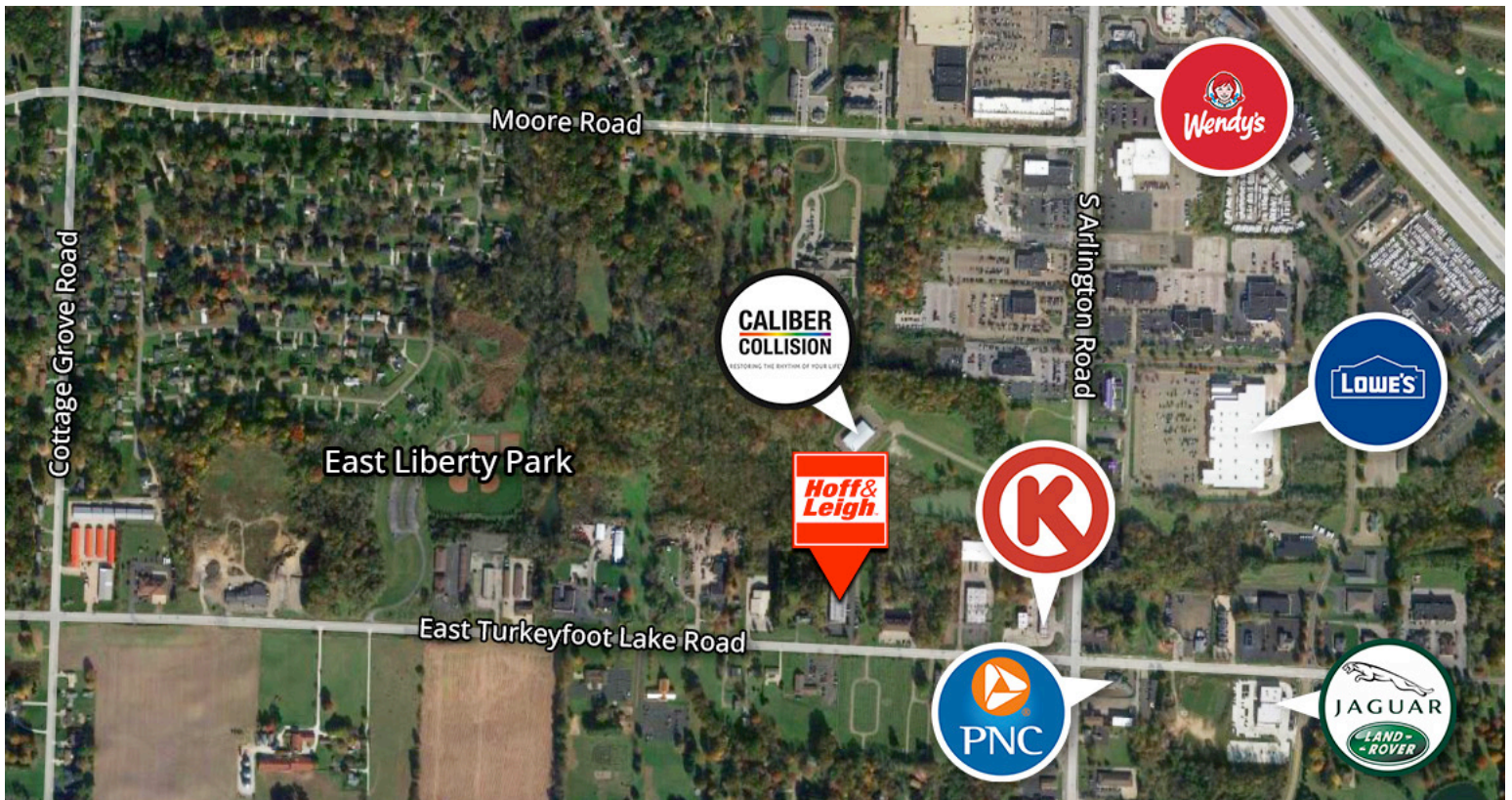
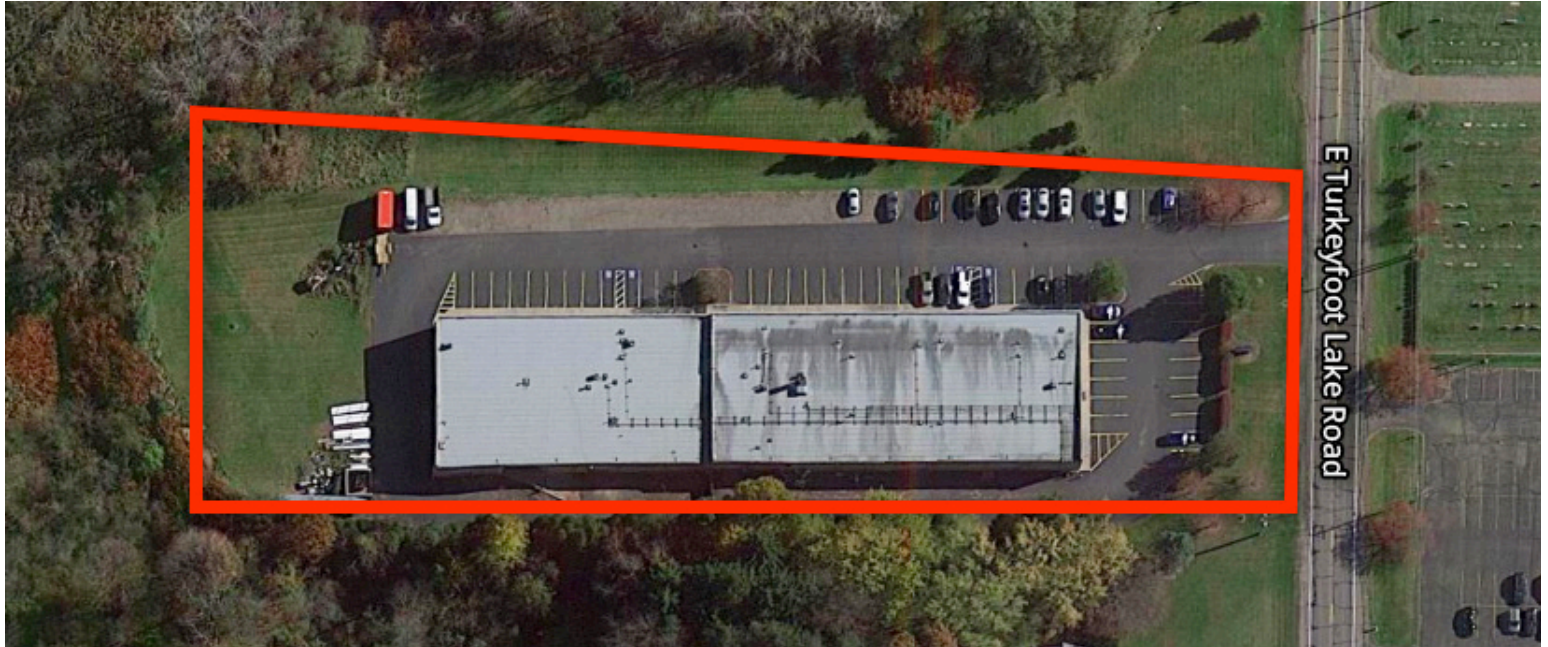


Rev: June 23, 2023



Flex Space for Lease

727 EAST TURKEYFOOT LAKE ROAD, AKRON, OH 44319



Rev: June 23, 2023



Our Network Is Your Edge

All information is from sources deemed reliable and is subject to errors, omissions, change of price, rental, prior sale, and withdrawal without notice. Prospect should carefully verify each item of information contained herein.

Ed Jesson

C: 330.760.4494

O: 330.940.9360

Ejesson@HoffLeigh.com