

# Private Office for Lease

2190 S DELAWARE STREET, DENVER, CO 80223

[Explore Virtual Tour](#)

## Overview

Hoff & Leigh is excited to bring to market a unique opportunity to lease this private office in Denver. With plenty of street parking, a private restroom and large windows for natural light, this space can be used for a wide variety of businesses looking for an executive office type feel. Call Hoff & Leigh today to schedule a tour.

Unit:	Size:	Price:
1	400 SF	\$1,200 / Month (Gross)

## Highlights

- Plenty of Natural Light
- Street Parking
- Private Office
- 1 Restroom

## Property Details



**Lease Rate**  
\$1,200 / Month (Gross)



**Space Available**  
400 SF

Rev: October 9, 2023



### Our Network Is Your Edge

All information is from sources deemed reliable and is subject to errors, omissions, change of price, rental, prior sale, and withdrawal without notice. Prospect should carefully verify each item of information contained herein.

### Brandon Langiewicz, SIOR

C: 715.512.0265  
O: 720.572.5187  
Brandon@HoffLeigh.com

### Lisa Langiewicz

C: 970.903.4198  
O: 720.572.5187  
LisaL@HoffLeigh.com

# Private Office for Lease

2190 S DELAWARE STREET, DENVER, CO 80223



Rev: October 9, 2023

## Our Network Is Your Edge

All information is from sources deemed reliable and is subject to errors, omissions, change of price, rental, prior sale, and withdrawal without notice. Prospect should carefully verify each item of information contained herein.

## Brandon Langiewicz, SIOR

C: 715.512.0265

O: 720.572.5187

Brandon@HoffLeigh.com

## Lisa Langiewicz

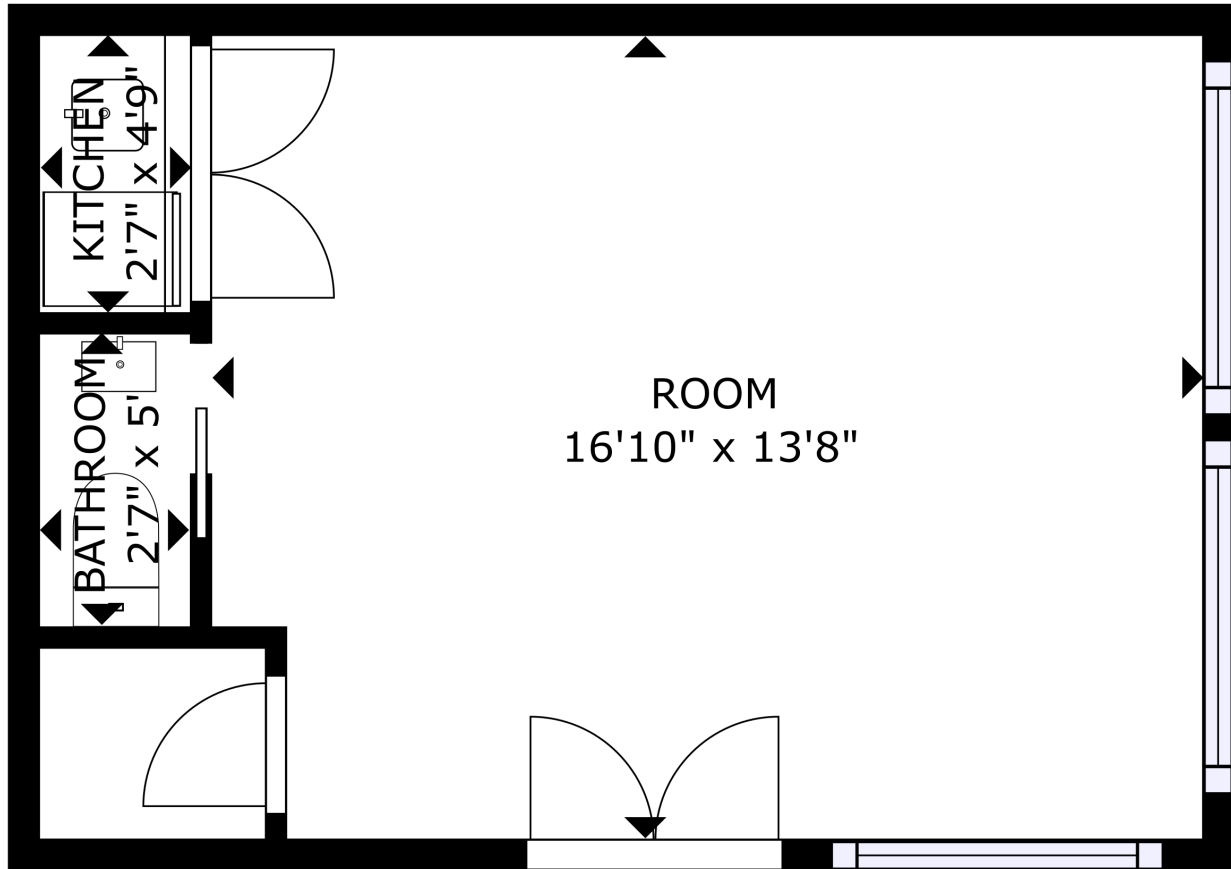
C: 970.903.4198

O: 720.572.5187

LisaL@HoffLeigh.com

# Private Office for Lease

2190 S DELAWARE STREET, DENVER, CO 80223



GROSS INTERNAL AREA  
GROUND FLOOR: 269 sq ft  
TOTAL: 269 sq ft

SIZES AND DIMENSIONS ARE APPROXIMATE, ACTUAL MAY VARY.

 **Matterport**

Rev: October 9, 2023

## Our Network Is Your Edge

All information is from sources deemed reliable and is subject to errors, omissions, change of price, rental, prior sale, and withdrawal without notice. Prospect should carefully verify each item of information contained herein.

## Brandon Langiewicz, SIOR

C: 715.512.0265

O: 720.572.5187

Brandon@HoffLeigh.com

## Lisa Langiewicz

C: 970.903.4198

O: 720.572.5187

LisaL@HoffLeigh.com

# Private Office for Lease

2190 S DELAWARE STREET, DENVER, CO 80223

2190 S Delaware St, Denver, Colorado, 80223

## DEMOGRAPHICS



165,322  
Population



36.2  
Median Age



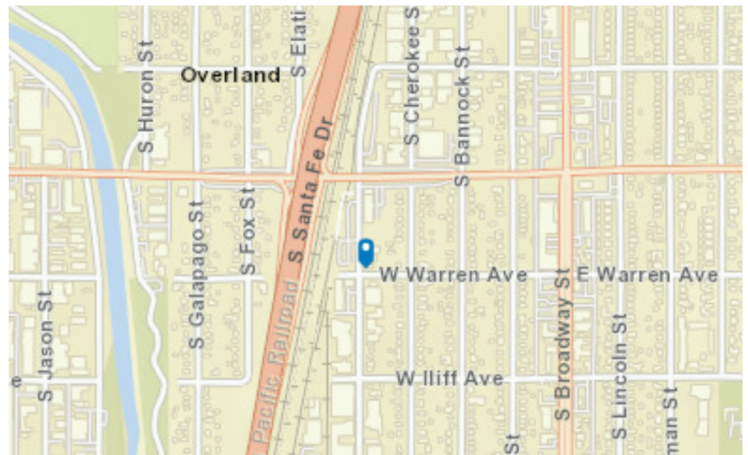
2.3  
Average  
Household Size



\$77,675  
Median Household  
Income

## TRAFFIC COUNT

Cross street	Traffic 1	Distance
W Evans Ave	80,257	0.1
S Cherokee St	32,000	0.1
W Warren Ave	1,146	0.1
W Iliff Ave	89,263	0.1
W Iliff Ave	89,263	0.1

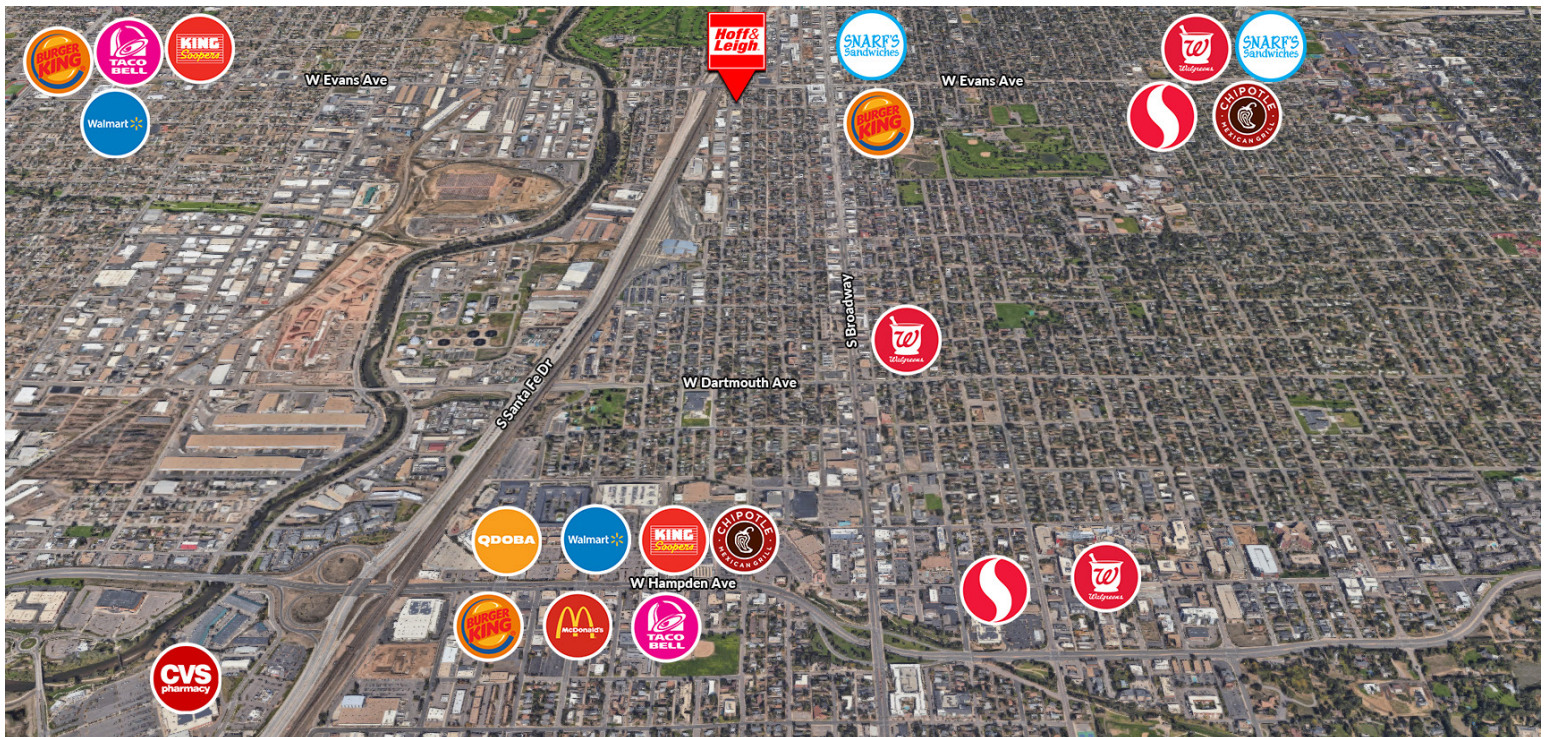
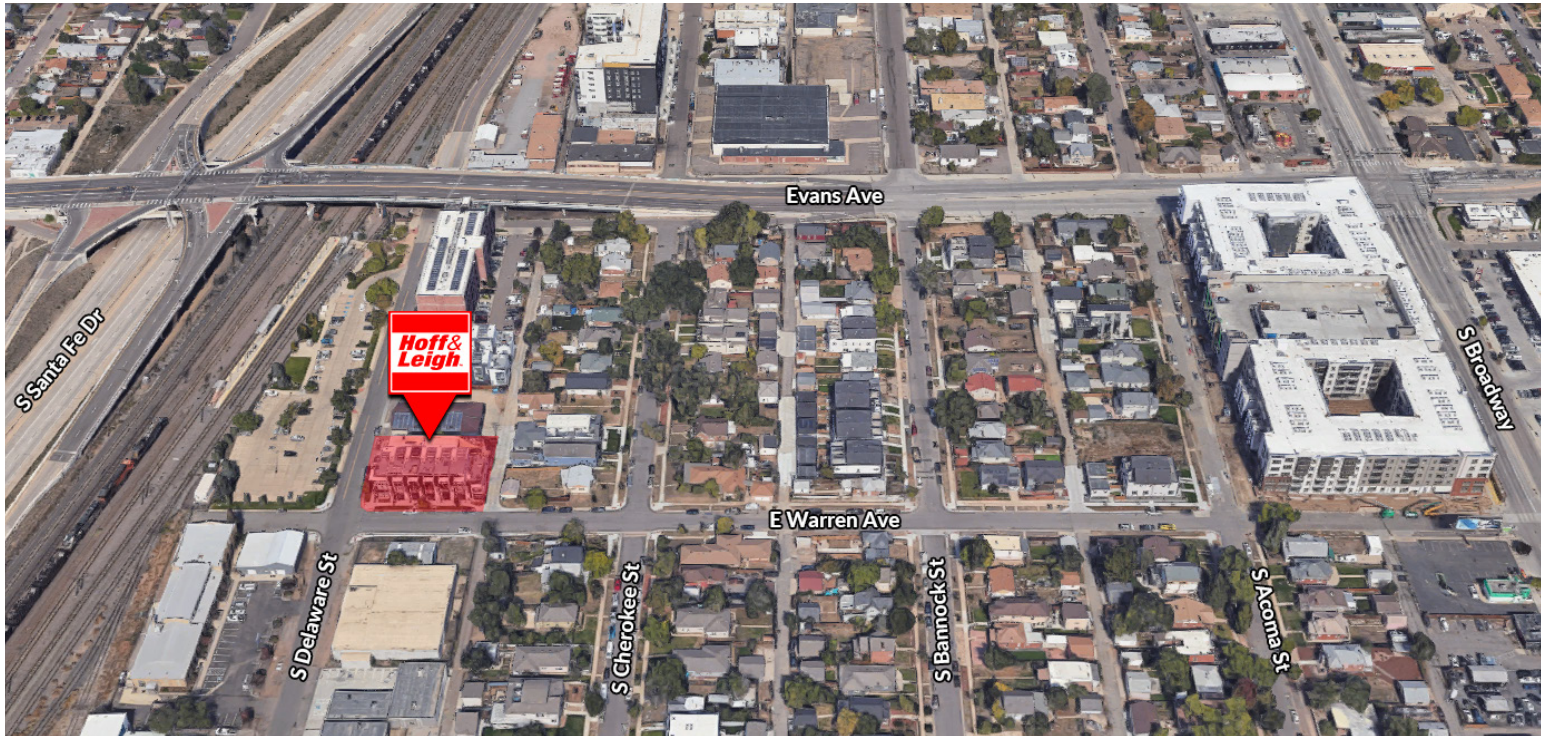


Rev: October 9, 2023



# Private Office for Lease

2190 S DELAWARE STREET, DENVER, CO 80223



Rev: October 9, 2023

## Our Network Is Your Edge

All information is from sources deemed reliable and is subject to errors, omissions, change of price, rental, prior sale, and withdrawal without notice. Prospect should carefully verify each item of information contained herein.

**Brandon Langiewicz, SIOR**

C: 715.512.0265

O: 720.572.5187

Brandon@HoffLeigh.com

**Lisa Langiewicz**

C: 970.903.4198

O: 720.572.5187

LisaL@HoffLeigh.com