

Professional Office Space for Lease

1753 S 8TH STREET, COLORADO SPRINGS, CO 80905



Overview

Hoff and Leigh is proud to present this creative office space for lease - Available April 1st.

Office spaces include CAT 5 connection (500 mbps) and/or WiFi (85 mbps), twice a week custodial service, 24/7 access, utilities, alarm system, abundant parking, kitchen, common space, patio and lots of daylight. Desks, Steelcase Chairs, and bookcases are available at no additional charge.

Suite 2 is approximately 20ft. x 12ft. (\$650 per month).

Other offices are utilized by video/audio professionals, marketers, software engineers, and entrepreneurs.

No service industries please (tattoos, nails, etc.). Well-behaved dogs allowed.




For more information or to set up a private tour text/call,
Jayme Wilson (719) 722-8632 today!

Suite:	Size:	Lease Rate:
2	240 SF	\$650 / Month (Gross)

Highlights

- Quiet, Private, Professional Office Space
- Five Minutes From Downtown
- Creative Office Spaces Offer Lots of Daylight
- Abundant Parking

Property Details

-  **Lease Rate**
\$650 / Month (Gross)
-  **Space Available**
240 SF
-  **Zoning**
C5

Rev: March 8, 2024



Professional Office Space for Lease

1753 S 8TH STREET, COLORADO SPRINGS, CO 80905



Rev: March 8, 2024



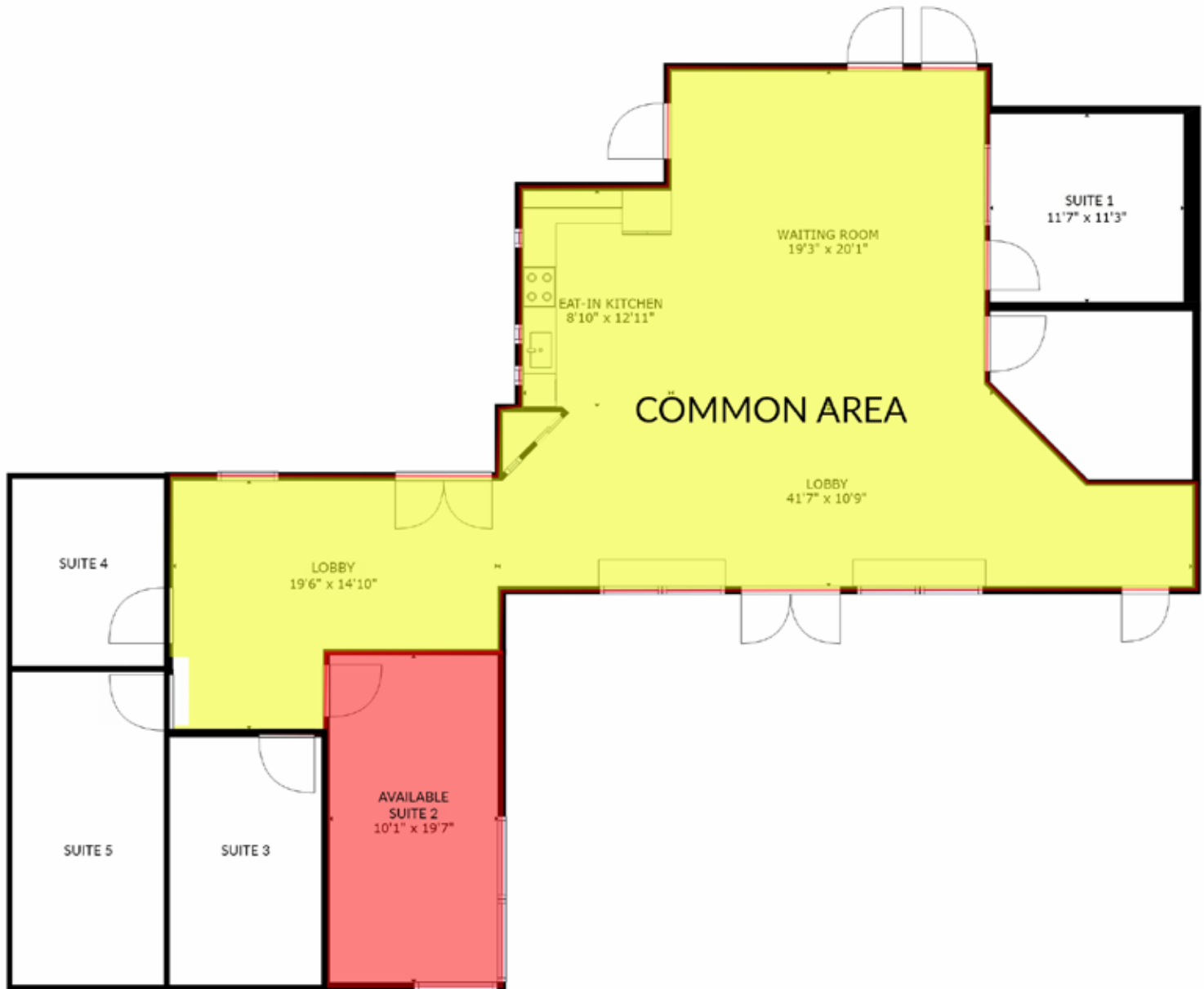
Our Network Is Your Edge

All information is from sources deemed reliable and is subject to errors, omissions, change of price, rental, prior sale, and withdrawal without notice. Prospect should carefully verify each item of information contained herein.

Jayne Wilson
C: 719.722.8632
O: 719.630.2277
JWilson@HoffLeigh.com

Professional Office Space for Lease

1753 S 8TH STREET, COLORADO SPRINGS, CO 80905



GROSS INTERNAL AREA
FLOOR 1: 1592 sq. ft
TOTAL: 1592 sq. ft

SIZES AND DIMENSIONS ARE APPROXIMATE, ACTUAL MAY VARY.

Rev: March 8, 2024

Our Network Is Your Edge

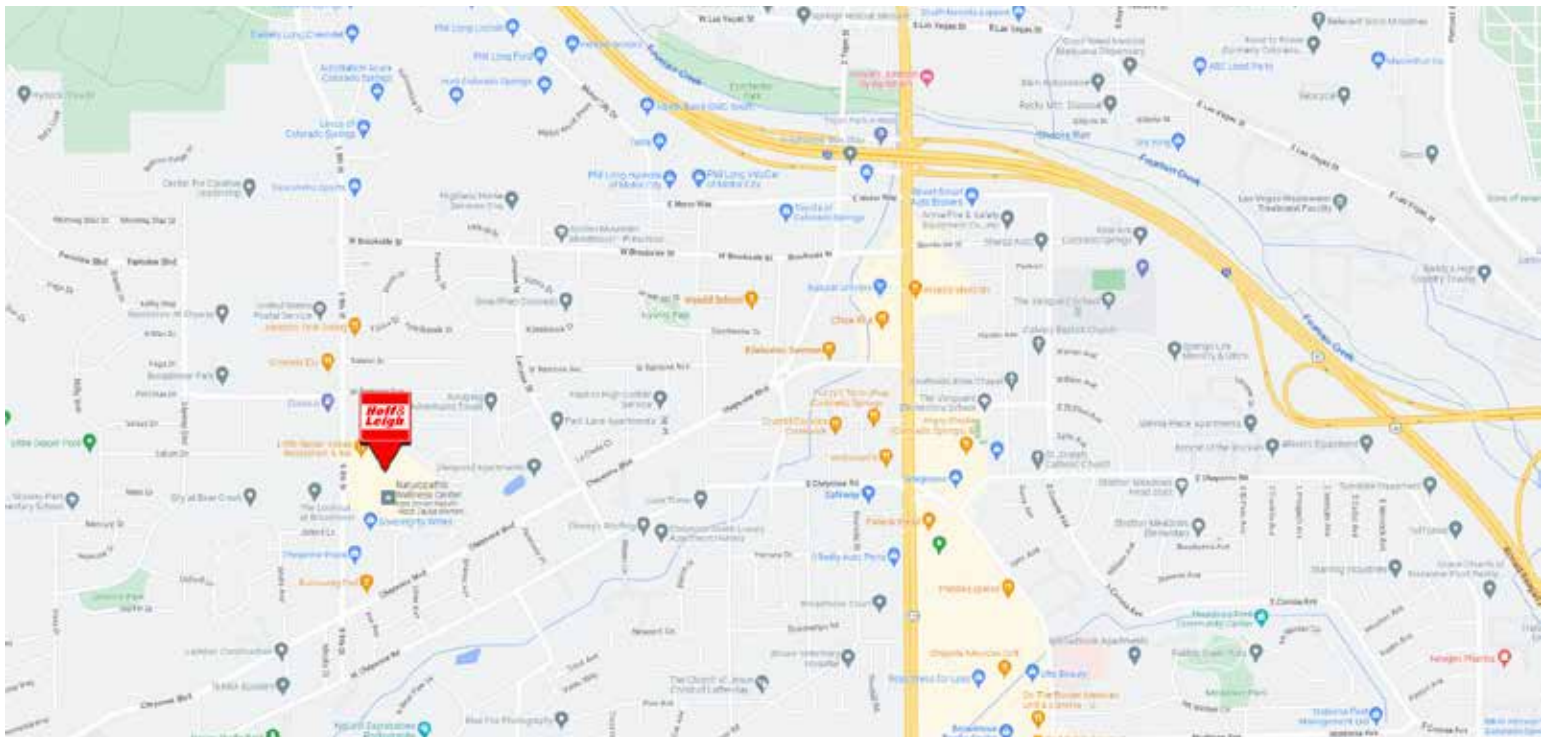
All information is from sources deemed reliable and is subject to errors, omissions, change of price, rental, prior sale, and withdrawal without notice. Prospect should carefully verify each item of information contained herein.

Jayme Wilson
C: 719.722.8632
O: 719.630.2277
JWilson@HoffLeigh.com



Professional Office Space for Lease

1753 S 8TH STREET, COLORADO SPRINGS, CO 80905



Rev: March 8, 2024



Our Network Is Your Edge

All information is from sources deemed reliable and is subject to errors, omissions, change of price, rental, prior sale, and withdrawal without notice. Prospect should carefully verify each item of information contained herein.

Jayne Wilson
C: 719.722.8632
O: 719.630.2277
jwilson@HoffLeigh.com