

Affordable Office Spaces in 80906

1235 - 1255 LAKE PLAZA DRIVE, COLORADO SPRINGS, CO 80906



Overview

1235-1255 Lake Plaza are professional office buildings located in Southwest Colorado Springs. The new owners are in the process of renovating the exterior and interior. Enjoy quick I-25 access, ample parking, walking distance restaurants and extraordinary drive-by visibility; just minutes from the Broadmoor Hotel!

Unit:	Size:	Price:
1255 Lake - Suite 268	1,252 SF	\$19.00 SF/YR (Gross)
1255 Lake - Suite 115/135	1,600 SF	\$19.00 SF/YR (Gross)
1255 Lake - Suite 145/155	2,263 SF	\$19.00 SF/YR (Gross)
1255 Lake - Suite 115-155 (combined)	3,863 SF	\$19.00 SF/YR (Gross)
1245 Lake - (freestanding)	1,107 SF	\$25.00 SF/YR (Gross)

Highlights

- Ample Parking
- Elevator Access
- Quick I-25 Access
- Flexible Floor Plans
- New Landscaping
- Gross Lease Terms

Property Details

Lease Rate

- \$19.00 - \$25.00 SF/YR (Gross)

Space Available

- 1,252 - 3,863 RSF

Zoning

- PBC

Rev: May 11, 2026



Our Network Is Your Edge

All information is from sources deemed reliable and is subject to errors, omissions, change of price, rental, prior sale, and withdrawal without notice. Prospect should carefully verify each item of information contained herein.

Guy Cox

C: 719.357.7494

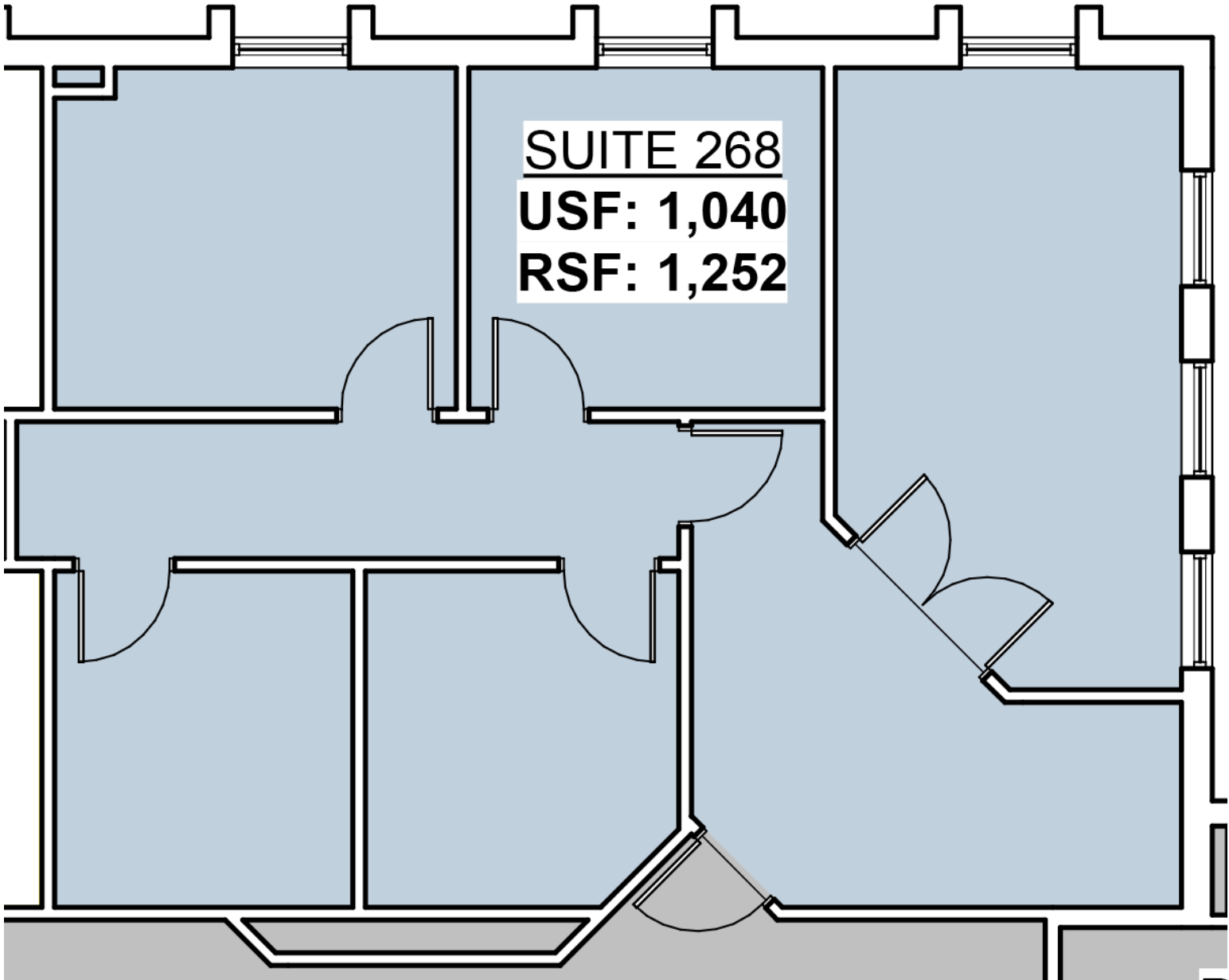
O: 719.630.2277

GCox@HoffLeigh.COM

Affordable Office Spaces in 80906

1235 - 1255 LAKE PLAZA DRIVE, COLORADO SPRINGS, CO 80906

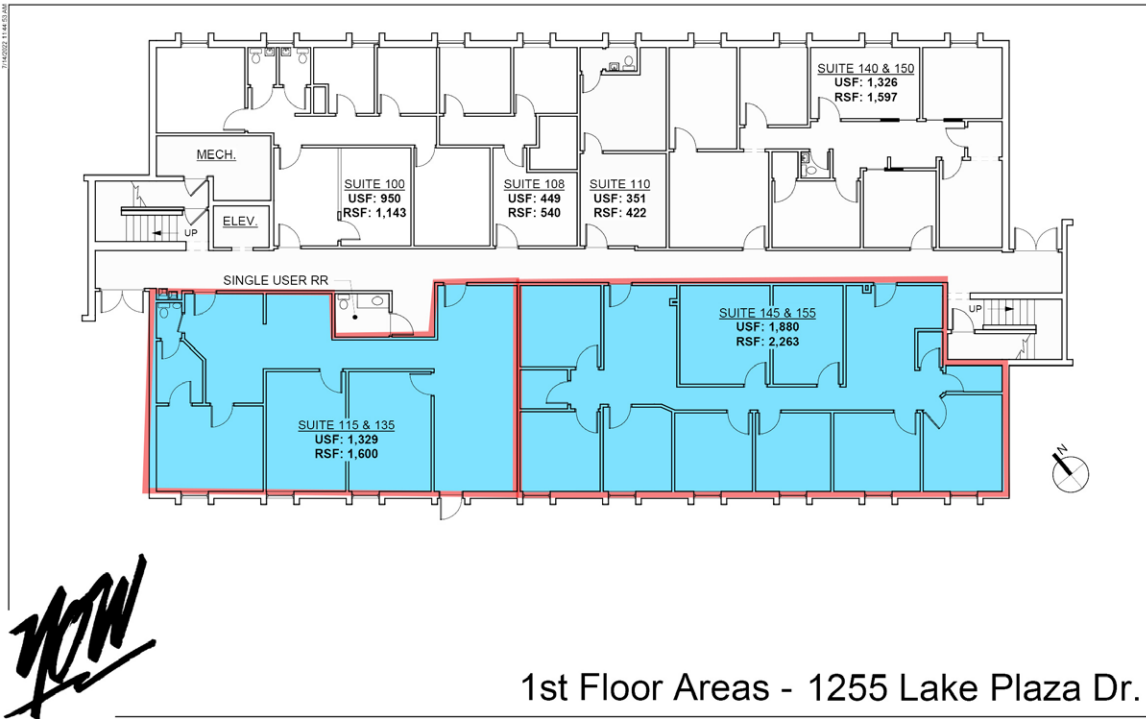
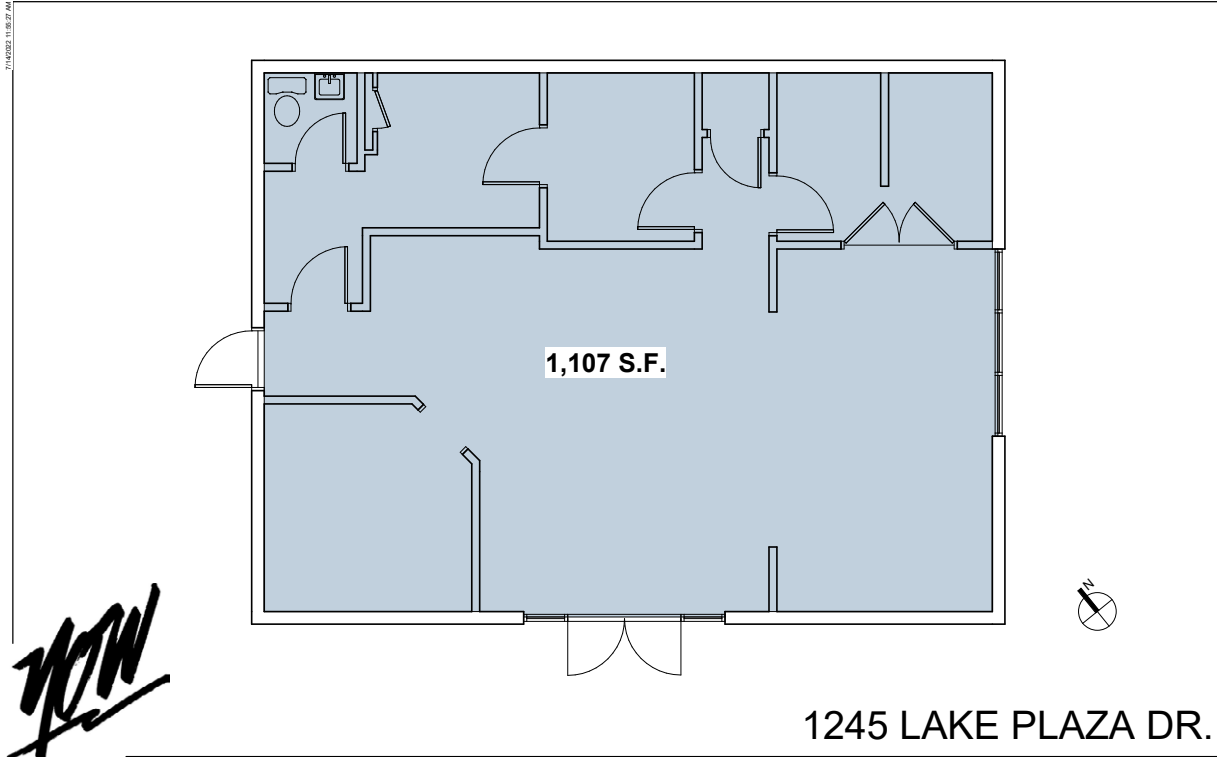
Suite 268



Rev: May 11, 2026

Affordable Office Spaces in 80906

1235 - 1255 LAKE PLAZA DRIVE, COLORADO SPRINGS, CO 80906



Rev: May 11, 2026



Affordable Office Spaces in 80906

1235 - 1255 LAKE PLAZA DRIVE, COLORADO SPRINGS, CO 80906



Rev: May 11, 2026



Our Network Is Your Edge

All information is from sources deemed reliable and is subject to errors, omissions, change of price, rental, prior sale, and withdrawal without notice. Prospect should carefully verify each item of information contained herein.

Guy Cox

C: 719.357.7494

O: 719.630.2277

G.Cox@HoffLeigh.COM



Affordable Office Spaces in 80906

1235 - 1255 LAKE PLAZA DRIVE, COLORADO SPRINGS, CO 80906



Rev: May 11, 2026



Our Network Is Your Edge

All information is from sources deemed reliable and is subject to errors, omissions, change of price, rental, prior sale, and withdrawal without notice. Prospect should carefully verify each item of information contained herein.

Guy Cox
C: 719.357.7494
O: 719.630.2277
GCox@HoffLeigh.COM

Affordable Office Spaces in 80906

1235 - 1255 LAKE PLAZA DRIVE, COLORADO SPRINGS, CO 80906



Rev: May 11, 2026