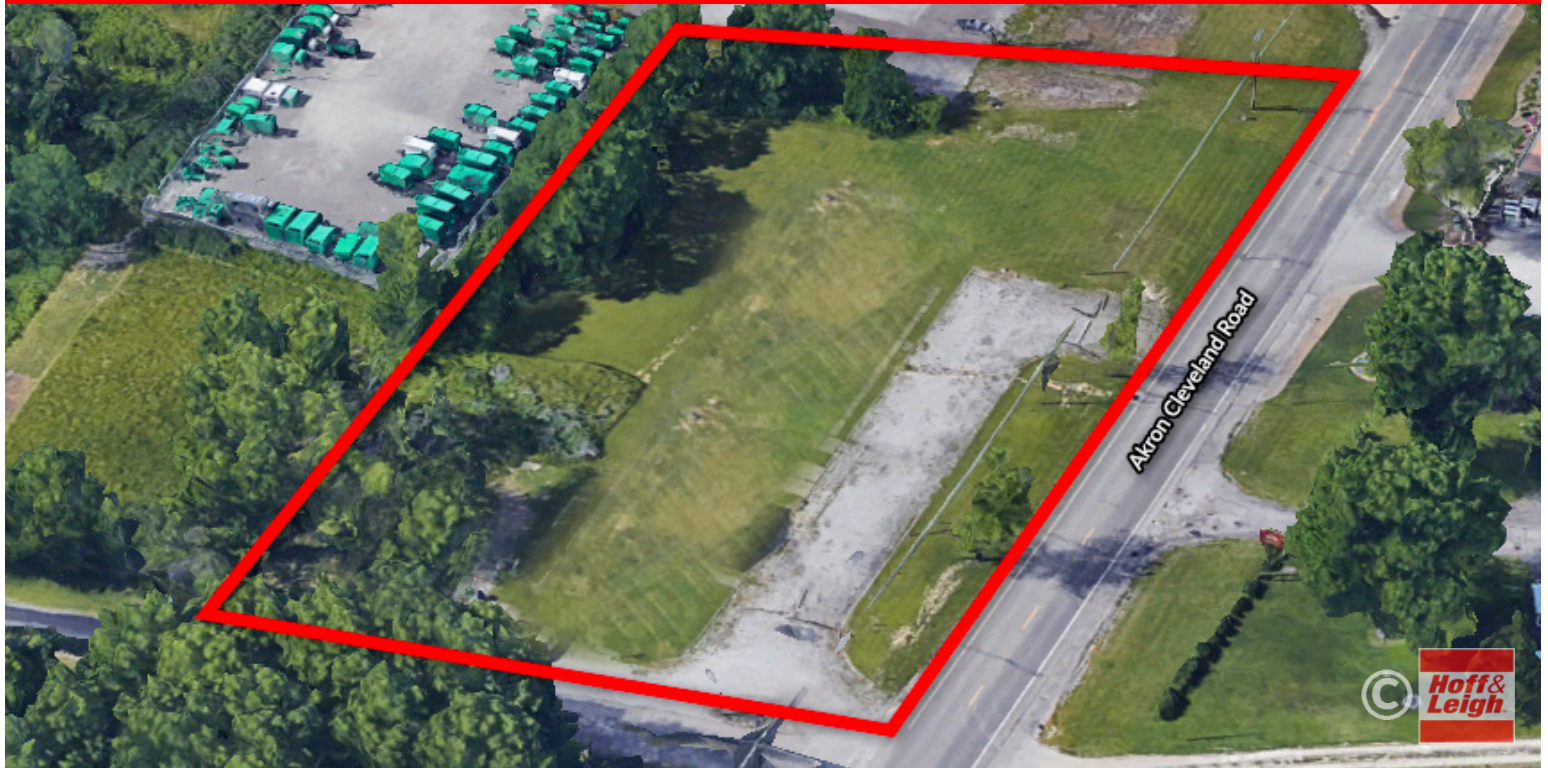


# DEVELOPMENT LAND FOR SALE

5130 Akron Cleveland Road, Peninsula, OH 44264



## OVERVIEW

New corner site just north of the new Fogg Industrial Parks off Seasons Road and Route 8. Located adjacent to the new Ryan Homes development and just south of Sunbelt Rentals. The remaining structures were recently removed from this site and Boston Heights is currently adding public utilities.

## HIGHLIGHTS

- Part of Boston Heights Development Plan
- Hudson CSD



**Sale Price:**  
\$249,900



**Lot Size:**  
1.40 Acres



**Zoning:**  
B-C, Business Corridor

## OUR NETWORK IS YOUR EDGE.

All information is from sources deemed reliable and is subject to errors, omissions, change of price, rental, prior sale, and withdrawal without notice. Prospect should carefully verify each item of information contained herein.

**Joe Zumpano**

O: 330.940.9360

C: 330.990.0847

[jzumpano@hoffleigh.com](mailto:jzumpano@hoffleigh.com)

**Alicia Stull**

O: 330.940.9360

C: 330.958.9134

[astull@hoffleigh.com](mailto:astull@hoffleigh.com)



# DEVELOPMENT LAND FOR SALE

5130 Akron Cleveland Road, Peninsula, OH 44264

5130 Akron Cleveland Rd, Peninsula, Ohio, 44264

## DEMOGRAPHICS



17,793  
Population



Median Age



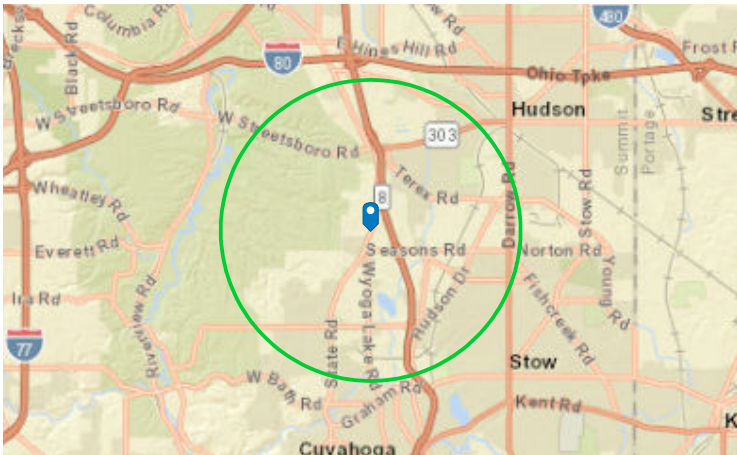
Average  
Household Size



\$79,598  
Median Household  
Income

## TRAFFIC COUNT

Cross street	Traffic 1	Distance
Geoppert Rd	7,141	0.0
Hidden Lake Ln	7,930	0.2
Seasons Rd	3,834	0.4
Montclair Dr	2,938	0.5
	3,965	0.6



### OUR NETWORK IS YOUR EDGE.

All information is from sources deemed reliable and is subject to errors, omissions, change of price, rental, prior sale, and withdrawal without notice. Prospect should carefully verify each item of information contained herein.

**Joe Zumpano**

O: 330.940.9360

C: 330.990.0847

[jzumpano@hoffleigh.com](mailto:jzumpano@hoffleigh.com)

**Alicia Stull**

O: 330.940.9360

C: 330.958.9134

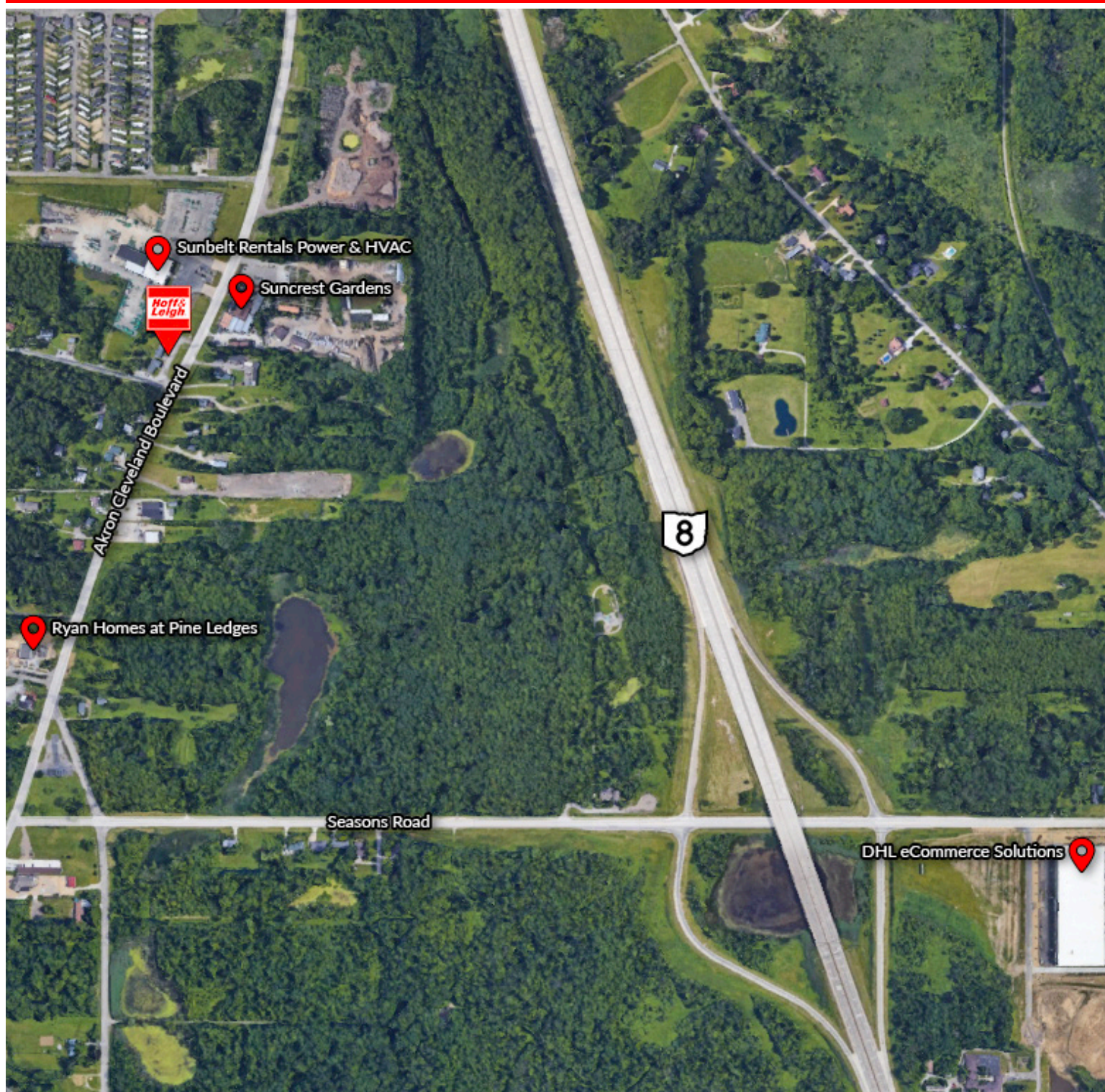
[astull@hoffleigh.com](mailto:astull@hoffleigh.com)





# DEVELOPMENT LAND FOR SALE

5130 Akron Cleveland Road, Peninsula, OH 44264



## OUR NETWORK IS YOUR EDGE.

All information is from sources deemed reliable and is subject to errors, omissions, change of price, rental, prior sale, and withdrawal without notice. Prospect should carefully verify each item of information contained herein.

**Joe Zumpano**

O: 330.940.9360

C: 330.990.0847

[jzumpano@hoffleigh.com](mailto:jzumpano@hoffleigh.com)

**Alicia Stull**

O: 330.940.9360

C: 330.958.9134

[astull@hoffleigh.com](mailto:astull@hoffleigh.com)