

# Office Space for Lease

300 W GARDEN OF THE GODS ROAD, COLORADO SPRINGS, CO 80918



## Overview

Great location one block east of I-25 on Garden of the Gods Road. We have multiple options on a newly updated building catering to the small office user. Great space for psychotherapist, massage therapist, CPAs, start up businesses - the list is endless. Very aggressive lease rates! Gross lease with landlord paying building expenses. For more information please call Steve Leigh 719-338-4470.

## Available Units

Unit:	Size:	Price:
120	225 SF	\$500 / Month (Gross)
180	200 SF	\$425 / Month (Gross)
188	230 SF	\$475 / Month (Gross)
190	343 SF	\$650 / Month (Gross)
235	200 SF	\$425 / Month (Gross)
250	422 SF	\$700 / Month (Gross)

## Property Details



**Lease Rate**  
\$425 - \$700 /  
Month (Gross)



**Space Available**  
200 - 422 SF

Rev: July 11, 2023



# Office Space for Lease

300 W GARDEN OF THE GODS ROAD, COLORADO SPRINGS, CO 80918



Rev: July 11, 2023



## Our Network Is Your Edge

All information is from sources deemed reliable and is subject to errors, omissions, change of price, rental, prior sale, and withdrawal without notice. Prospect should carefully verify each item of information contained herein.

## Steve Leigh

C: 719.338.4470

O: 719.630.2277

Steve@HoffLeigh.com

## Barbara Leigh

C: 719.331.2276

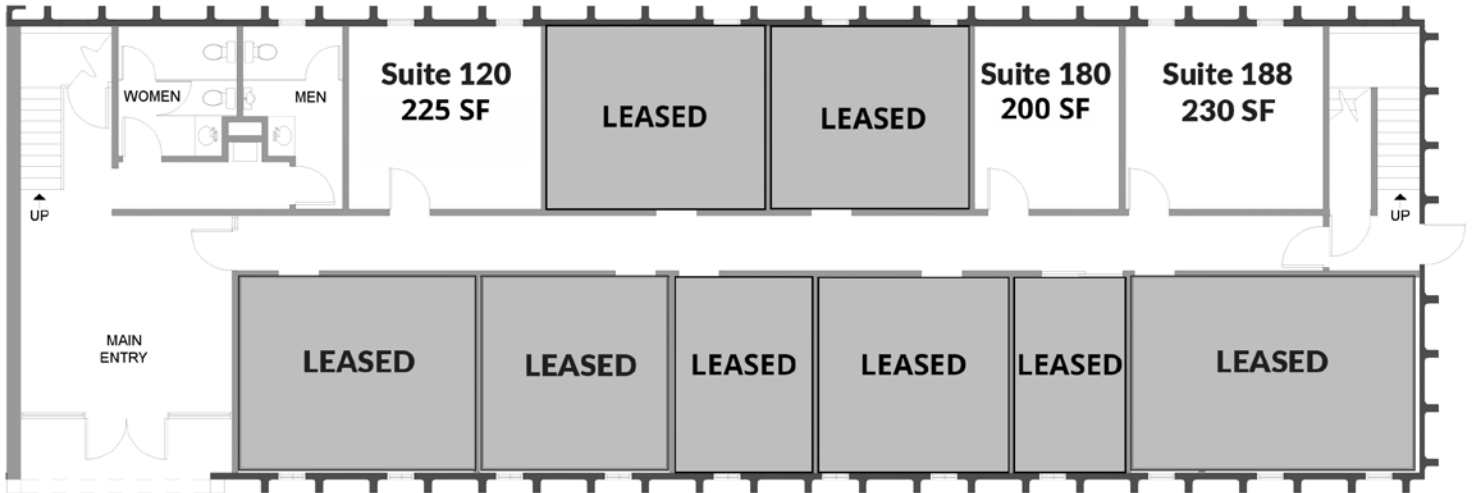
O: 719.630.2277

BLeigh@HoffLeigh.com

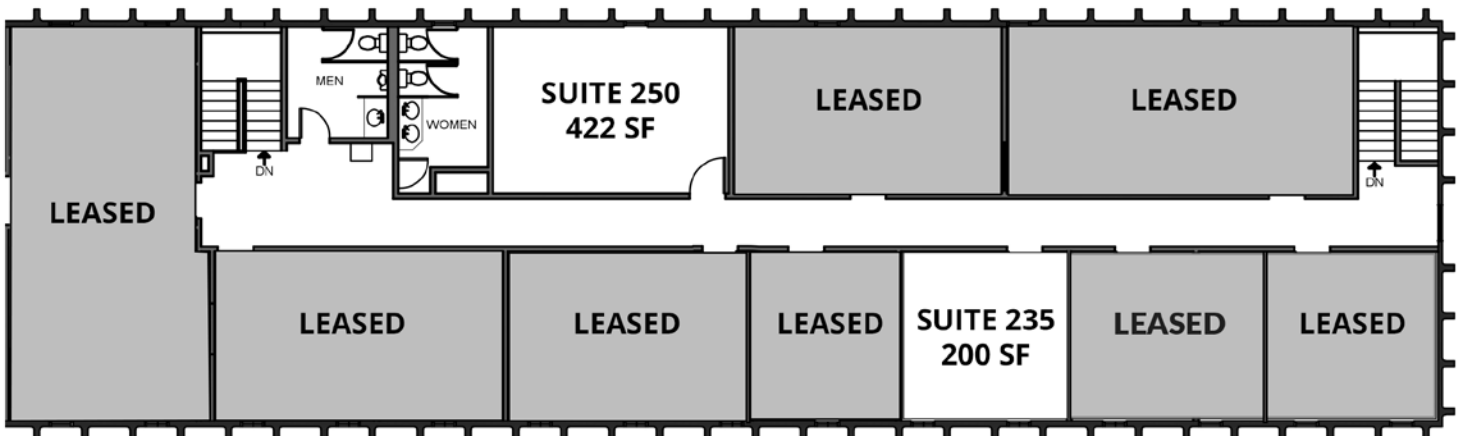
# Office Space for Lease

300 W GARDEN OF THE GODS ROAD, COLORADO SPRINGS, CO 80918

## Ground Floor



## 2nd Floor



Rev: July 11, 2023

### Our Network Is Your Edge

All information is from sources deemed reliable and is subject to errors, omissions, change of price, rental, prior sale, and withdrawal without notice. Prospect should carefully verify each item of information contained herein.

### Steve Leigh

C: 719.338.4470

O: 719.630.2277

Steve@HoffLeigh.com

### Barbara Leigh

C: 719.331.2276

O: 719.630.2277

BLeigh@HoffLeigh.com



# Office Space for Lease

300 W GARDEN OF THE GODS ROAD, COLORADO SPRINGS, CO 80918



Rev: July 11, 2023

## Our Network Is Your Edge

All information is from sources deemed reliable and is subject to errors, omissions, change of price, rental, prior sale, and withdrawal without notice. Prospect should carefully verify each item of information contained herein.

## Steve Leigh

C: 719.338.4470

O: 719.630.2277

Steve@HoffLeigh.com

## Barbara Leigh

C: 719.331.2276

O: 719.630.2277

BLeigh@HoffLeigh.com