

Modern Office Space for Lease in 80906

1257 LAKE PLAZA DRIVE, COLORADO SPRINGS, CO 80906



Overview

An "open concept" building, 1257 Lake Plaza Drive offers open floor plans, modern, airy finishes, and abundant light. The building has been completely remodeled with well configured office layouts. Please call for more information and to set up a tour.

Unit:	Size:	Price:
205	1,303 SF	\$2,200 / Month (Gross)
225	1,334 SF	\$2,200 / Month (Gross)
205 - 225	2,637 SF	\$4,000 / Month (Gross)

Highlights

- Open Concept Common Area; Wet Bars and Seating Areas
- Modern Finishes
- Abundant Parking
- Light & Airy
- Open Floor Plans
- New Landscaping
- Private Entrances for All Suites
- Minutes from I-25, Broadmoor Hotel, & Southgate Shopping Center

Property Details



Lease Rate

\$18.20 - \$20.26 SF/YR (Gross)



Space Available

1,303 - 2,637 SF



Submarket

Southwest

Rev: October 31, 2023

Our Network Is Your Edge

All information is from sources deemed reliable and is subject to errors, omissions, change of price, rental, prior sale, and withdrawal without notice. Prospect should carefully verify each item of information contained herein.

Chris Myers

C: 719.650.4627

O: 719.630.2277

CMyers@HoffLeigh.com

Holly Trinidad

C: 719.337.0999

O: 719.630.2277

Holly@HoffLeigh.com



Modern Office Space for Lease in 80906

1257 LAKE PLAZA DRIVE, COLORADO SPRINGS, CO 80906



Rev: October 31, 2023



Our Network Is Your Edge

All information is from sources deemed reliable and is subject to errors, omissions, change of price, rental, prior sale, and withdrawal without notice. Prospect should carefully verify each item of information contained herein.

Chris Myers

C: 719.650.4627

O: 719.630.2277

CMyers@HoffLeigh.com

Holly Trinidad

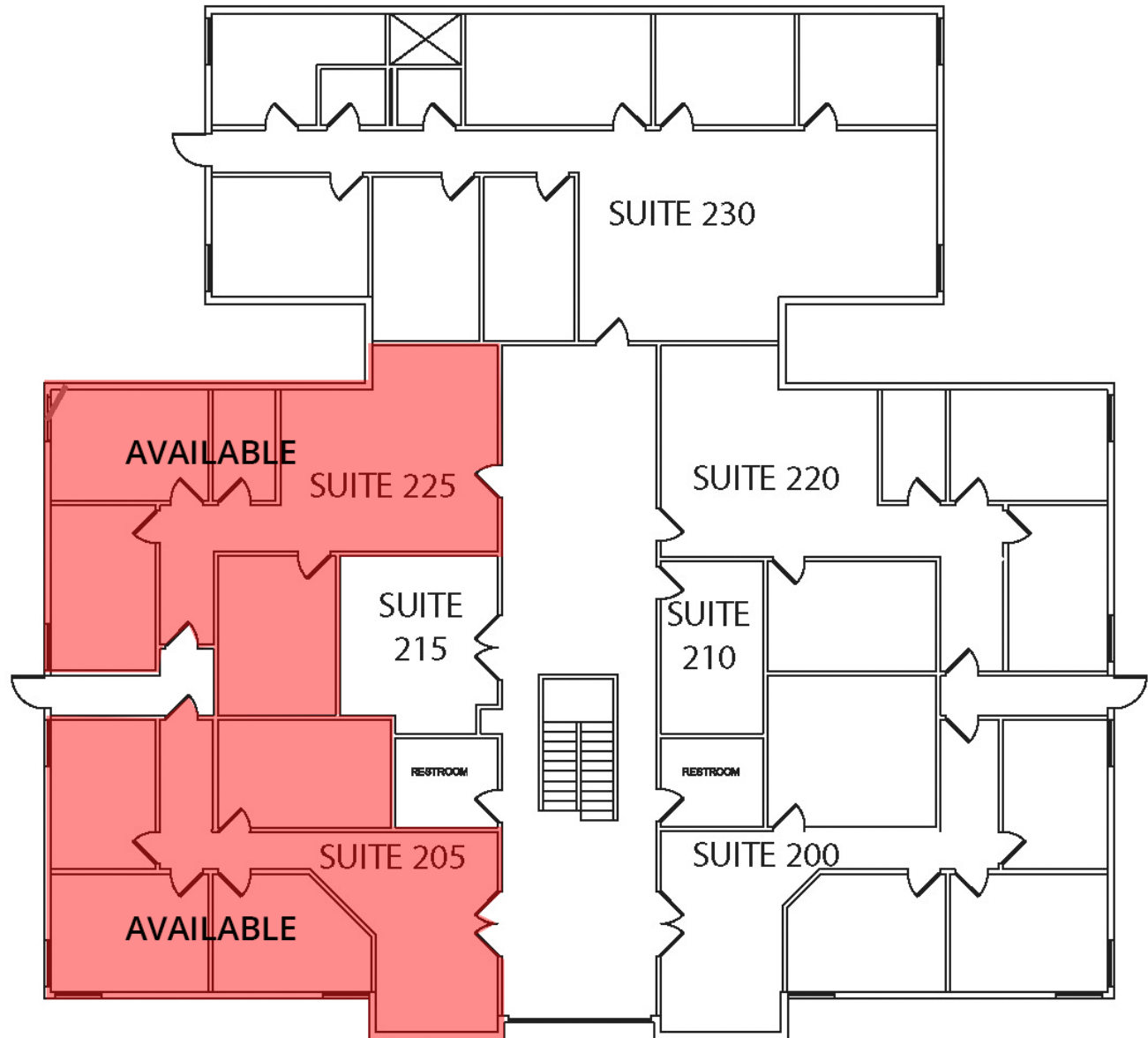
C: 719.337.0999

O: 719.630.2277

Holly@HoffLeigh.com

Modern Office Space for Lease in 80906

1257 LAKE PLAZA DRIVE, COLORADO SPRINGS, CO 80906



Rev: October 31, 2023

Our Network Is Your Edge

All information is from sources deemed reliable and is subject to errors, omissions, change of price, rental, prior sale, and withdrawal without notice. Prospect should carefully verify each item of information contained herein.

Chris Myers

C: 719.650.4627

O: 719.630.2277

CMyers@HoffLeigh.com

Holly Trinidad

C: 719.337.0999

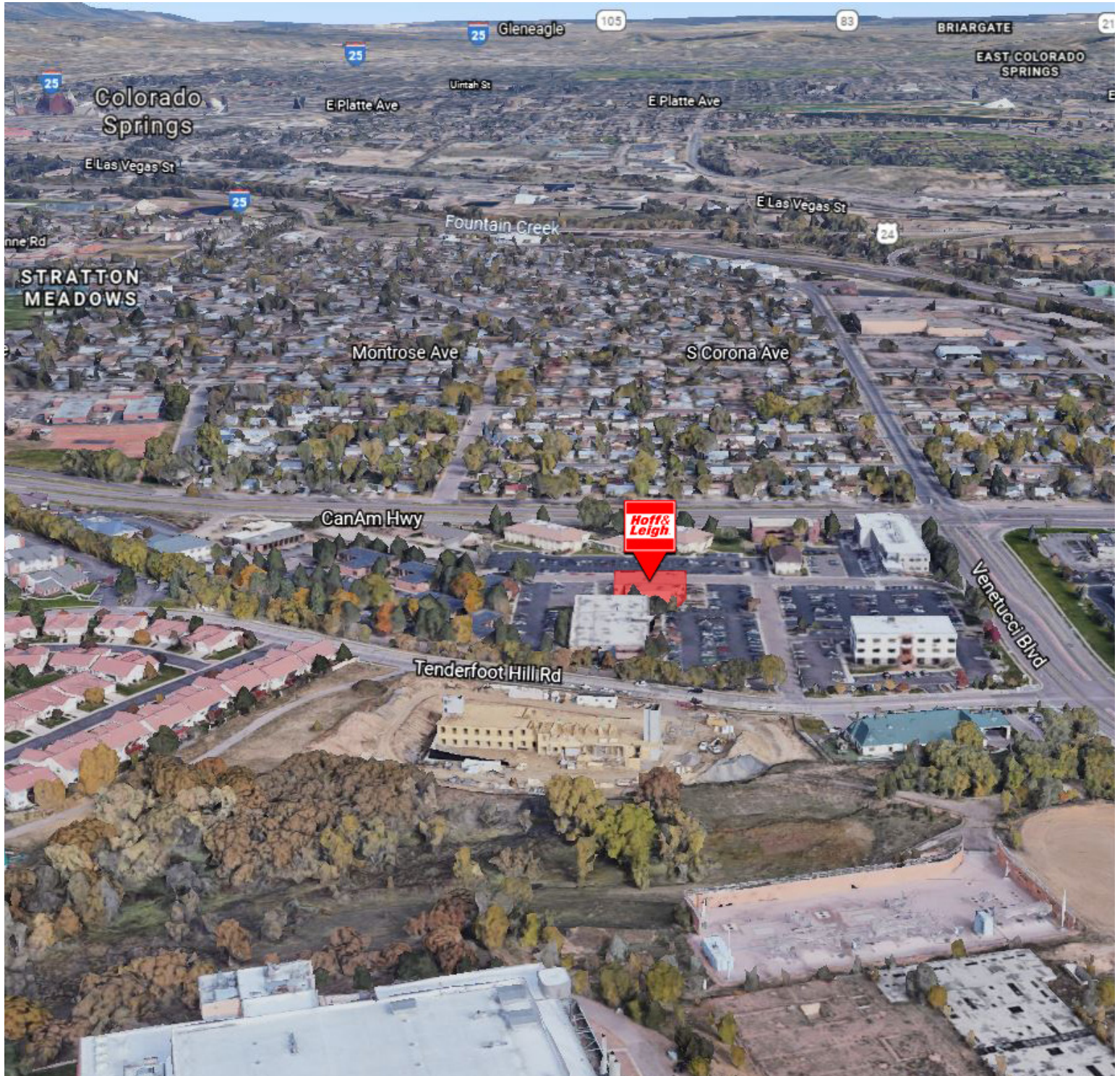
O: 719.630.2277

Holly@HoffLeigh.com



Modern Office Space for Lease in 80906

1257 LAKE PLAZA DRIVE, COLORADO SPRINGS, CO 80906



Rev: October 31, 2023



Our Network Is Your Edge

All information is from sources deemed reliable and is subject to errors, omissions, change of price, rental, prior sale, and withdrawal without notice. Prospect should carefully verify each item of information contained herein.

Chris Myers

C: 719.650.4627

O: 719.630.2277

CMyers@HoffLeigh.com

Holly Trinidad

C: 719.337.0999

O: 719.630.2277

Holly@HoffLeigh.com