

Office / Retail / Medical for Lease

1120 N CIRCLE DRIVE, COLORADO SPRINGS, CO 80909



Overview

Now Available for Lease! 1120 N Circle Dr is an exceptional commercial real estate opportunity centrally located in Colorado Springs. This property offers an ideal setting for businesses seeking a strategic location to grow and thrive. Explore the versatility of our available suites at 1120 N Circle Dr, where you have the choice of two to three exceptional suites to meet your business needs.

Suite 105 & 110: Combine these adjacent suites to create a spacious 2,270 SF area. Suite 105 boasts an open layout with a bathroom and a discreet office at the rear. Suite 110 features a range of amenities including a small kitchenette, a bathroom, a welcoming reception area, a generously sized conference room, and an additional office.

Suite 160: With a total area of 2,190 SF, Suite 160 provides ample room for diverse applications. This suite is thoughtfully designed, featuring five well-appointed offices, a dedicated conference room, a welcoming reception area, two bathrooms, a convenient kitchenette, and abundant storage space.

Discover the potential that these suites hold for your business. Whether you're seeking a collaborative workspace, a client-friendly environment, or a mixture of both, these suites offer the flexibility to accommodate your vision. Secure your spot today in this dynamic, Pizza Hut anchored, commercial property by contacting us to arrange a personalized tour.

Unit:	Size:	Lease Rate:
105 Virtual Tour	1,080 SF	1,080 SF x \$12.50/SF/YR + \$2.25/SF/YR NNN) = \$1,327.50/Month (+ Utilities)
110 Virtual Tour	1,190 SF	1,190 SF x \$12.50/SF/YR + \$2.25/SF/YR NNN) = \$1,462.71/Month (+ Utilities)
105 / 110	2,270 SF	2,270 SF x \$12.50/SF/YR + \$2.25/SF/YR NNN) = \$2,790.21/Month (+ Utilities)
160 Virtual Tour	2,190 SF	2,190 SF x \$12.50/SF/YR + \$2.25/SF/YR NNN) = \$2,691.88/Month (+ Utilities)

Property Details



Lease Rate
\$12.50 SF/YR
(+ \$2.25 PSF NNN)



Space Available
1,080 - 2,270 SF



Lot Size
1.05 Acres

Rev: February 22, 2024

Office / Retail / Medical for Lease

1120 N CIRCLE DRIVE, COLORADO SPRINGS, CO 80909



Rev: February 22, 2024

Our Network Is Your Edge

All information is from sources deemed reliable and is subject to errors, omissions, change of price, rental, prior sale, and withdrawal without notice. Prospect should carefully verify each item of information contained herein.

Steve Leigh

C: 719.338.4470
O: 719.630.2277
Steve@HoffLeigh.com

Barbara Leigh

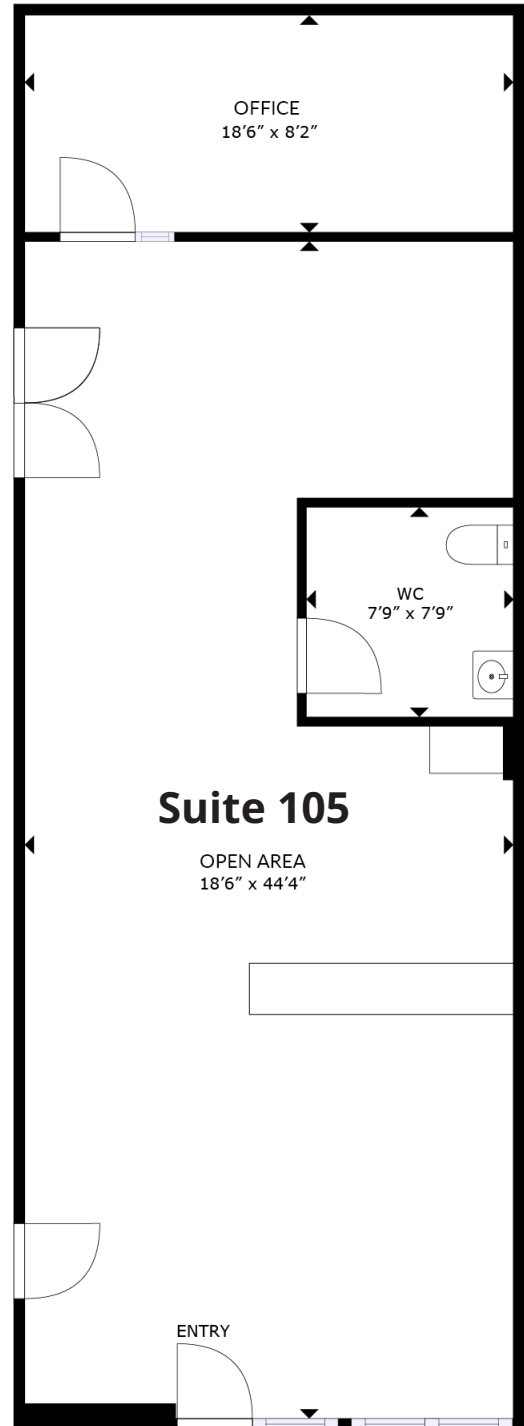
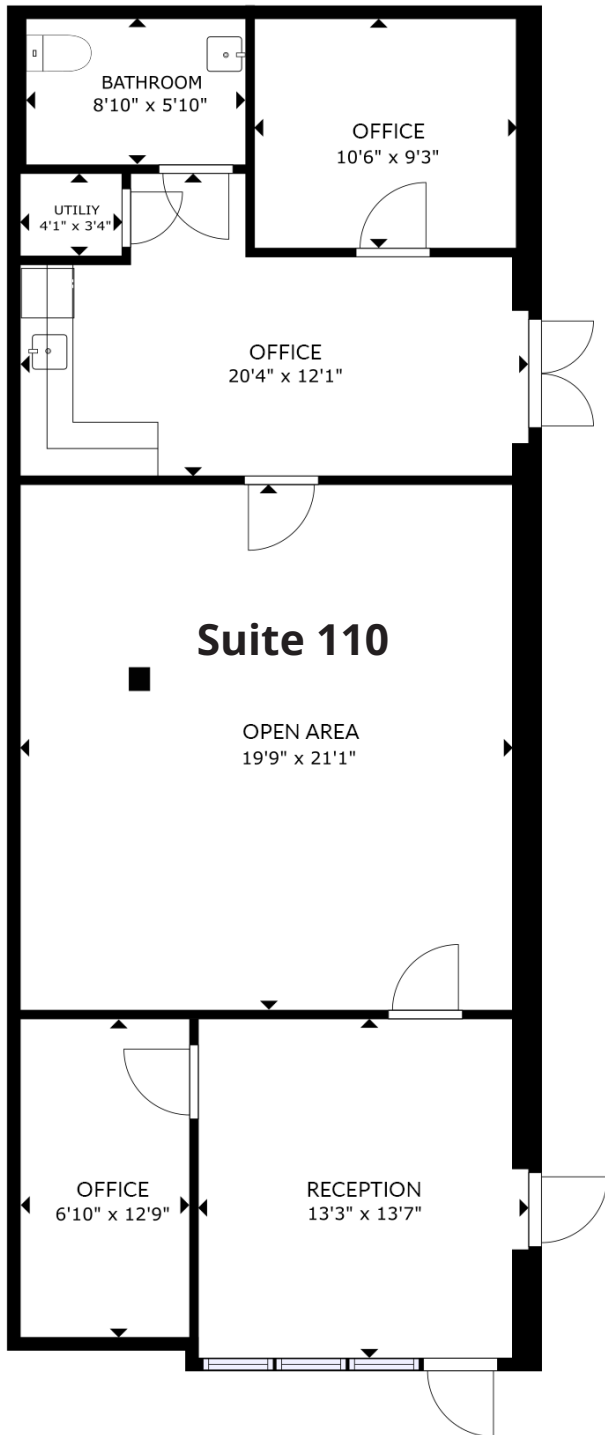
C: 719.331.2276
O: 719.630.2277
BLeigh@HoffLeigh.com

Jayme Wilson

C: 719.722.8632
O: 719.630.2277
JWilson@HoffLeigh.com

Office / Retail / Medical for Lease

1120 N CIRCLE DRIVE, COLORADO SPRINGS, CO 80909



Rev: February 22, 2024

Our Network Is Your Edge

All information is from sources deemed reliable and is subject to errors, omissions, change of price, rental, prior sale, and withdrawal without notice. Prospect should carefully verify each item of information contained herein.

Steve Leigh

C: 719.338.4470
O: 719.630.2277
Steve@HoffLeigh.com

Barbara Leigh

C: 719.331.2276
O: 719.630.2277
BLeigh@HoffLeigh.com

Jayme Wilson

C: 719.722.8632
O: 719.630.2277
JWilson@HoffLeigh.com



Office / Retail / Medical for Lease

1120 N CIRCLE DRIVE, COLORADO SPRINGS, CO 80909

Suite 110 - Suite 105



Rev: February 22, 2024



Our Network Is Your Edge

All information is from sources deemed reliable and is subject to errors, omissions, change of price, rental, prior sale, and withdrawal without notice. Prospect should carefully verify each item of information contained herein.

Steve Leigh

C: 719.338.4470

O: 719.630.2277

Steve@HoffLeigh.com

Barbara Leigh

C: 719.331.2276

O: 719.630.2277

BLeigh@HoffLeigh.com

Jayme Wilson

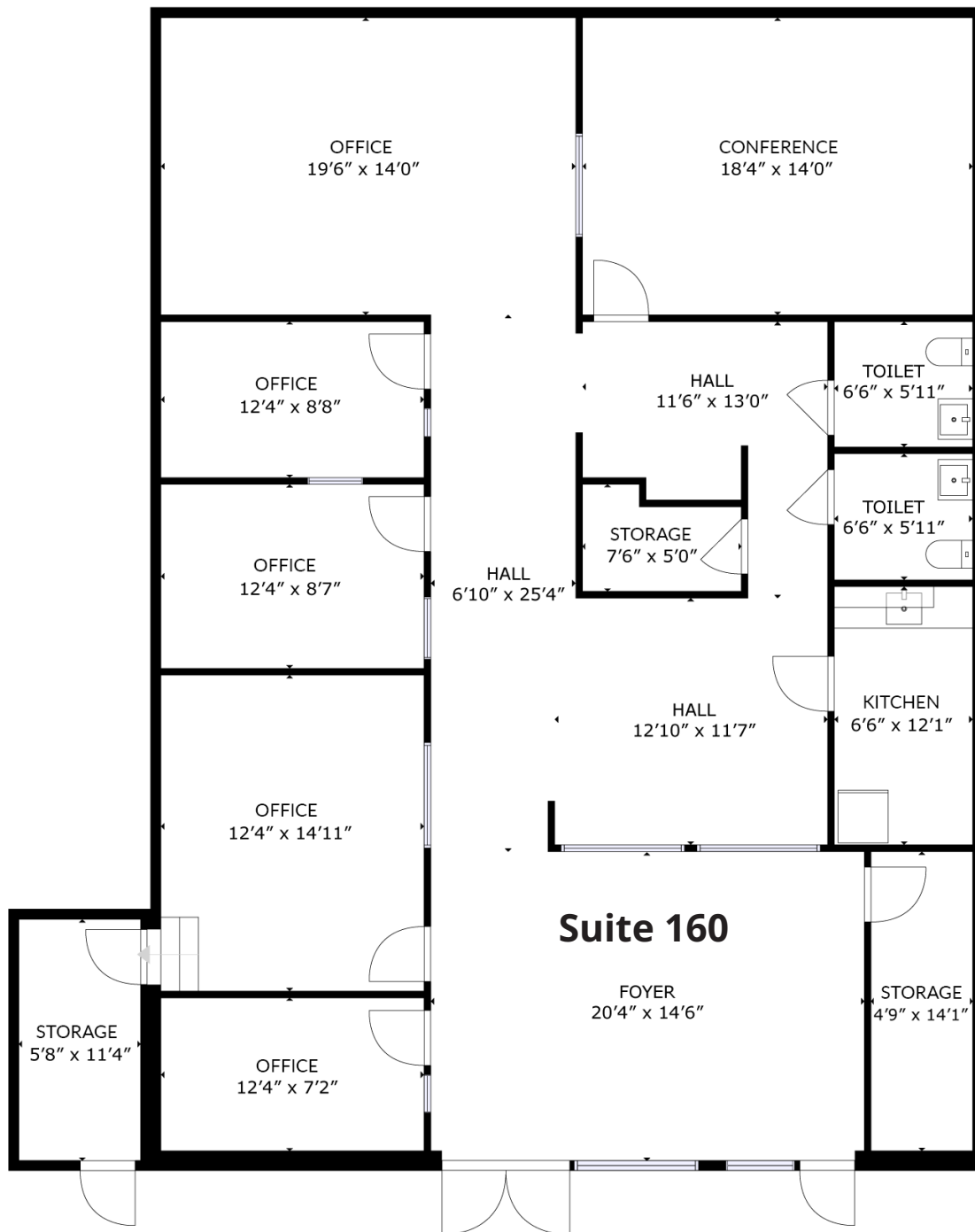
C: 719.722.8632

O: 719.630.2277

JWilson@HoffLeigh.com

Office / Retail / Medical for Lease

1120 N CIRCLE DRIVE, COLORADO SPRINGS, CO 80909



Rev: February 22, 2024

Our Network Is Your Edge

All information is from sources deemed reliable and is subject to errors, omissions, change of price, rental, prior sale, and withdrawal without notice. Prospect should carefully verify each item of information contained herein.

Steve Leigh

C: 719.338.4470
O: 719.630.2277
Steve@HoffLeigh.com

Barbara Leigh

C: 719.331.2276
O: 719.630.2277
BLeigh@HoffLeigh.com

Jayme Wilson

C: 719.722.8632
O: 719.630.2277
JWilson@HoffLeigh.com



Office / Retail / Medical for Lease

1120 N CIRCLE DRIVE, COLORADO SPRINGS, CO 80909

Suite 160



Rev: February 22, 2024



Our Network Is Your Edge

All information is from sources deemed reliable and is subject to errors, omissions, change of price, rental, prior sale, and withdrawal without notice. Prospect should carefully verify each item of information contained herein.

Steve Leigh

C: 719.338.4470

O: 719.630.2277

Steve@HoffLeigh.com

Barbara Leigh

C: 719.331.2276

O: 719.630.2277

BLeigh@HoffLeigh.com

Jayme Wilson

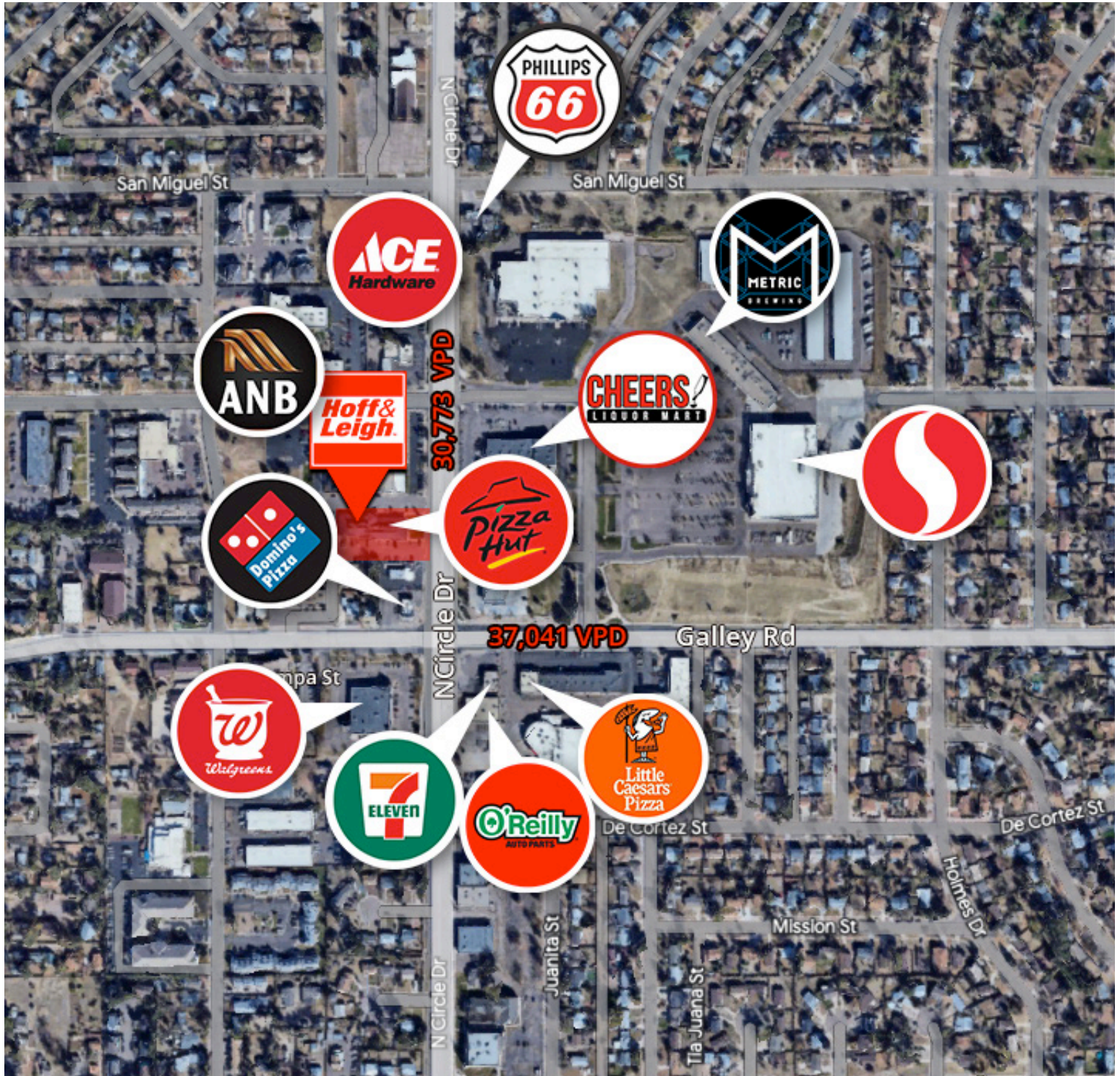
C: 719.722.8632

O: 719.630.2277

JWilson@HoffLeigh.com

Office / Retail / Medical for Lease

1120 N CIRCLE DRIVE, COLORADO SPRINGS, CO 80909



Rev: February 22, 2024

Our Network Is Your Edge

All information is from sources deemed reliable and is subject to errors, omissions, change of price, rental, prior sale, and withdrawal without notice. Prospect should carefully verify each item of information contained herein.

Steve Leigh

C: 719.338.4470

O: 719.630.2277

Steve@HoffLeigh.com

Barbara Leigh

C: 719.331.2276

O: 719.630.2277

BLeigh@HoffLeigh.com

Jayme Wilson

C: 719.722.8632

O: 719.630.2277

JWilson@HoffLeigh.com