

Office Space for Sale or Lease

3910 S CAREFREE CIRCLE, COLORADO SPRINGS, CO 80917

MOVE-IN SPECIAL!



Overview

3910 S. Carefree Circle offers up to 10,124 SF of medical office space. The building has abundant light, lots of exterior windows, great parking and is located on the ground floor. With adjacent proximity to Peak Vista Health Centers at Academy, this is a desirable medical location. To arrange a private showing, please call Guy or Steve at 719-630-2277.

Suite:	Size:	Lease Rate:
A	1,762 SF	\$11.00 SF/YR (+ \$9.04 NNN)

Highlights

- Medical Space
- Abundant Lights
- Lots of Exterior Windows
- Ample Parking
- Ground Floor
- Estimated NNNs \$9.04 / SF

Property Details



Sales Price
Contact Broker



Space Available
1,762 - 10,124 SF



Lease Rate
\$11.00 SF/YR (+ \$9.04 PSF NNN)

Rev: February 9, 2026



Our Network Is Your Edge

All information is from sources deemed reliable and is subject to errors, omissions, change of price, rental, prior sale, and withdrawal without notice. Prospect should carefully verify each item of information

Guy Cox
C: 719.357.7494
O: 719.630.2277
GCox@HoffLeigh.com

Steve Leigh
C: 719.338.4470
O: 719.630.2277
Steve@HoffLeigh.com



Office Space for Sale or Lease

3910 S CAREFREE CIRCLE, COLORADO SPRINGS, CO 80917



Rev: February 9, 2026



Our Network Is Your Edge

All information is from sources deemed reliable and is subject to errors, omissions, change of price, rental, prior sale, and withdrawal without notice. Prospect should carefully verify each item of information

Guy Cox

C: 719.357.7494

O: 719.630.2277

GCox@HoffLeigh.com

Steve Leigh

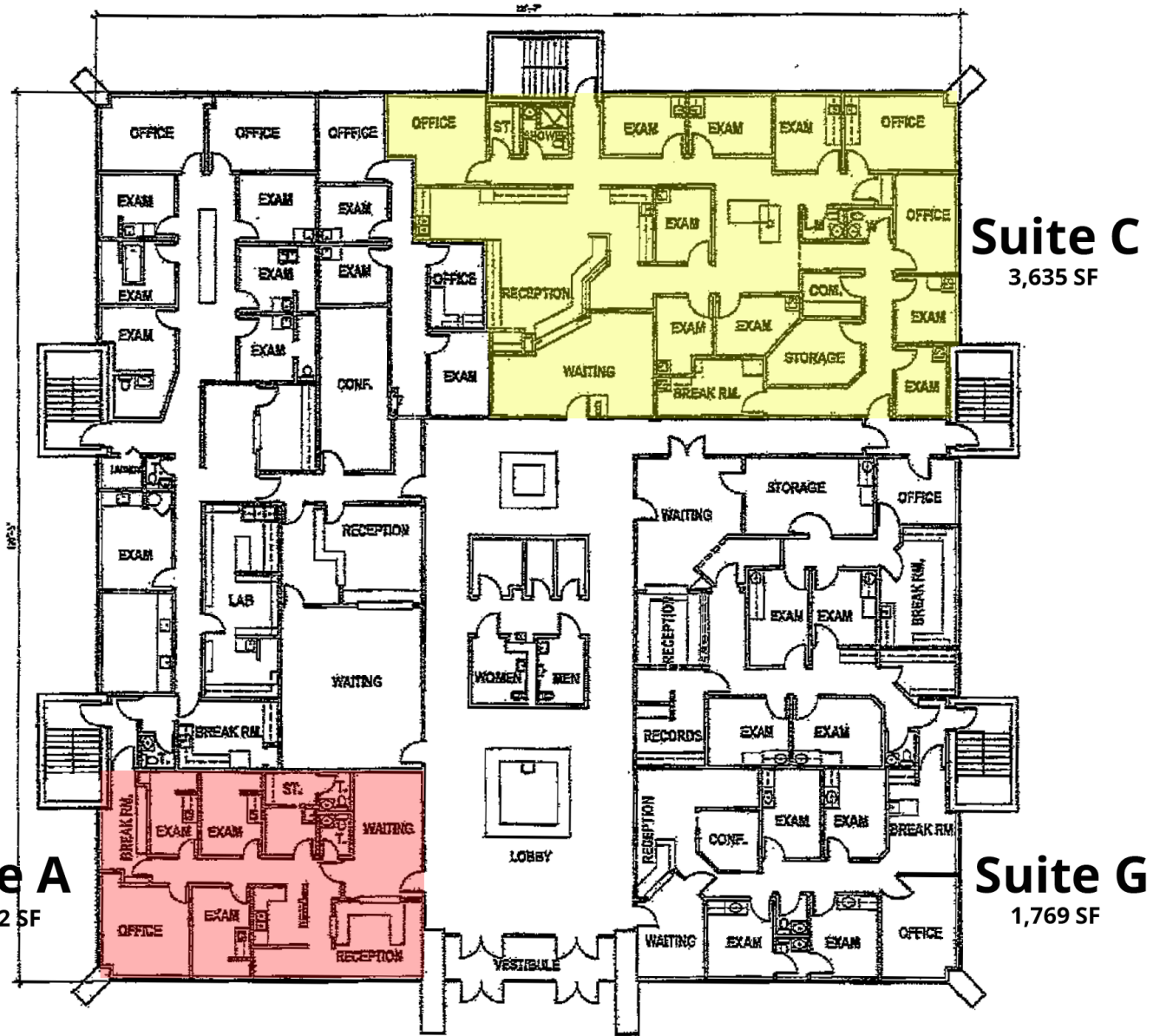
C: 719.338.4470

O: 719.630.2277

Steve@HoffLeigh.com

Office Space for Sale or Lease

3910 S CAREFREE CIRCLE, COLORADO SPRINGS, CO 80917



Suite C
3,635 SF

Suite A
1,762 SF

Suite G
1,769 SF

Rev: February 9, 2026

Office Space for Sale or Lease

3910 S CAREFREE CIRCLE, COLORADO SPRINGS, CO 80917



Rev: February 9, 2026

Our Network Is Your Edge



All information is from sources deemed reliable and is subject to errors, omissions, change of price, rental, prior sale, and withdrawal without notice. Prospect should carefully verify each item of information

Guy Cox

C: 719.357.7494

O: 719.630.2277

GCox@HoffLeigh.com

Steve Leigh

C: 719.338.4470

O: 719.630.2277

Steve@HoffLeigh.com