

# Skyway Shopping Center

808 ARCTURUS DRIVE, COLORADO SPRINGS, CO 80905



## Overview

This retail building is located at the entrance to Skyway, just North of the Broadmoor neighborhood. The center is anchored by a busy dog daycare and other great businesses! The available spaces would make a great fit for any retail business, restaurant or just about anything due to the liberal zoning of "C-5". Please call for more information and to set up a tour.

Suite #:	Available Space:	Lease Rate:
840	6,000 SF	\$10.00 - \$14.00 PSF
840-2	3,000 SF	\$10.00 - \$14.00 PSF
810B	3,937 SF	\$10.00 - \$14.00 PSF

## Property Details

	<b>Lease Rate</b> \$10.00 - \$14.00 PSF (+ \$4.00 NNN)	
	<b>Space Available</b> 3,000 - 6,000 SF	
	<b>Lot Size</b> 2.6 Acres	
		<b>Building Size</b> 39,733 SF
		<b>Zoning</b> C-5

Rev: April 3, 2023

### Our Network Is Your Edge

All information is from sources deemed reliable and is subject to errors, omissions, change of price, rental, prior sale, and withdrawal without notice. Prospect should carefully verify each item of information contained herein.

### Chris Myers

C: 719.650.4627

O: 719.630.2277

CMyers@HoffLeigh.com

### Jayme Wilson

C: 719.722.8632

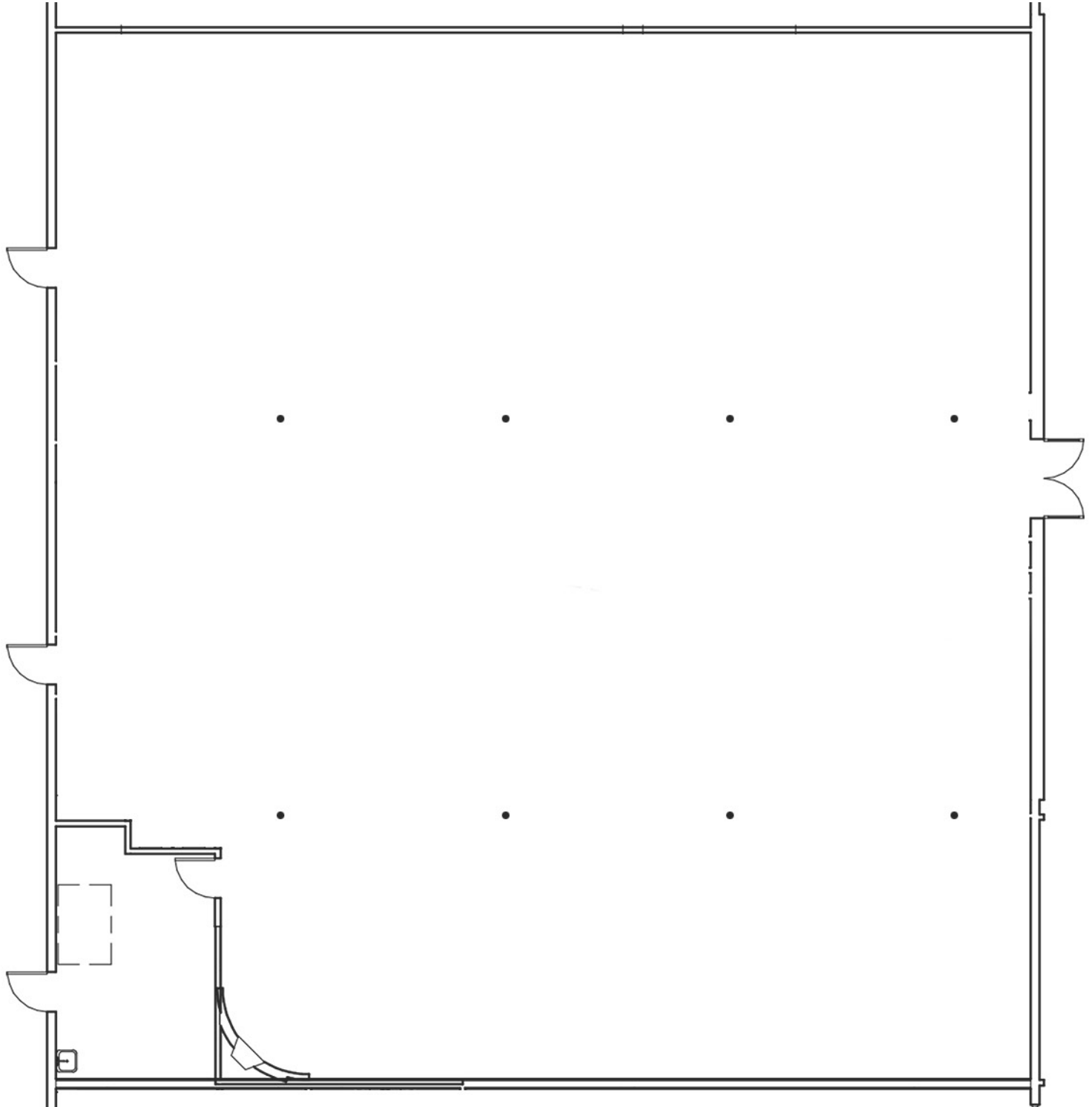
O: 719.630.2277

JWilson@HoffLeigh.com



# Skyway Shopping Center

808 ARCTURUS DRIVE, COLORADO SPRINGS, CO 80905



Rev: April 3, 2023



## Our Network Is Your Edge

All information is from sources deemed reliable and is subject to errors, omissions, change of price, rental, prior sale, and withdrawal without notice. Prospect should carefully verify each item of information contained herein.

## Chris Myers

C: 719.650.4627

O: 719.630.2277

CMyers@HoffLeigh.com

## Jayne Wilson

C: 719.722.8632

O: 719.630.2277

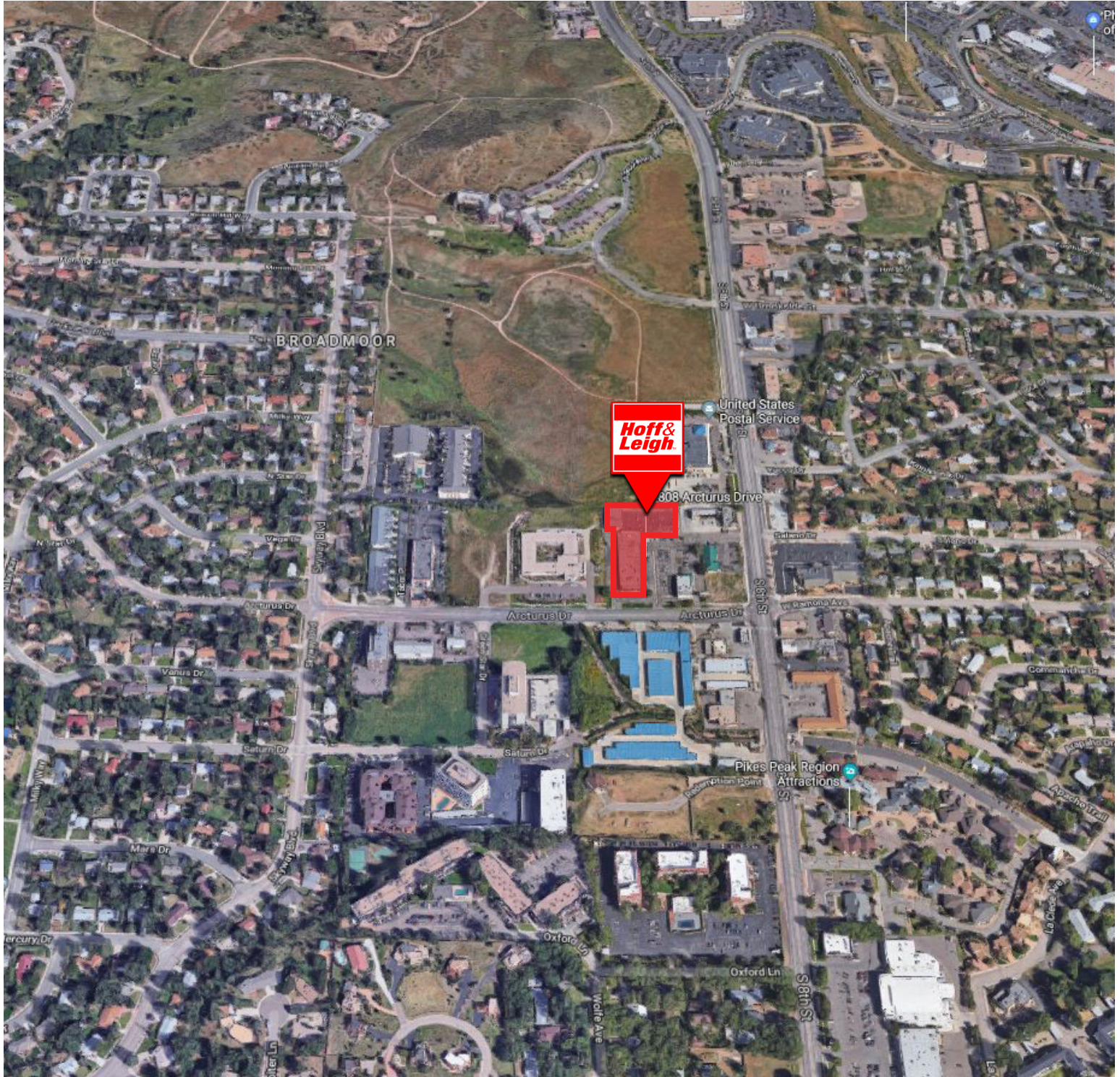
JWilson@HoffLeigh.com





# Skyway Shopping Center

808 ARCTURUS DRIVE, COLORADO SPRINGS, CO 80905



Rev: April 3, 2023



## Our Network Is Your Edge

All information is from sources deemed reliable and is subject to errors, omissions, change of price, rental, prior sale, and withdrawal without notice. Prospect should carefully verify each item of information contained herein.

## Chris Myers

C: 719.650.4627

O: 719.630.2277

CMyers@HoffLeigh.com

## Jayme Wilson

C: 719.722.8632

O: 719.630.2277

JWilson@HoffLeigh.com