

# Office Space for Lease

1765 S 8TH STREET. COLORADO SPRINGS, CO 80905



## Overview

Great office spaces for lease on the Westside! Located on South 8th Street near Cheyenne Boulevard. The property is located in the quiet and covenant-controlled Broadmarket Square. With quick easy access to the Broadmoor and just minutes from I-25, Downtown and the New Urban Renewal Area on South Nevada. The building has ample parking and is well maintained and managed.

For a private showing contact Steve Leigh or Barbara Leigh at 719-338-4470.

Unit:	Size:	Price:
220	1,434 SF	\$1,595 / Month (Gross)

## Highlights

- 8th Street & Cheyenne Boulevard
- Ample Parking
- Quick Access to the Broadmoor
- Minutes from I-25 and Downtown

## Property Details



**Lease Rate**  
\$13.35 SF/YR (Gross)



**Space Available**  
1,434 SF

Rev: February 29, 2024



# Office Space for Lease

1765 S 8TH STREET. COLORADO SPRINGS, CO 80905



Rev: February 29, 2024



## Our Network Is Your Edge

All information is from sources deemed reliable and is subject to errors, omissions, change of price, rental, prior sale, and withdrawal without notice. Prospect should carefully verify each item of information contained herein.

## Steve Leigh

C: 719.338.4470

O: 719.630.2277

Steve@HoffLeigh.com

## Barbara Leigh

C: 719.331.2276

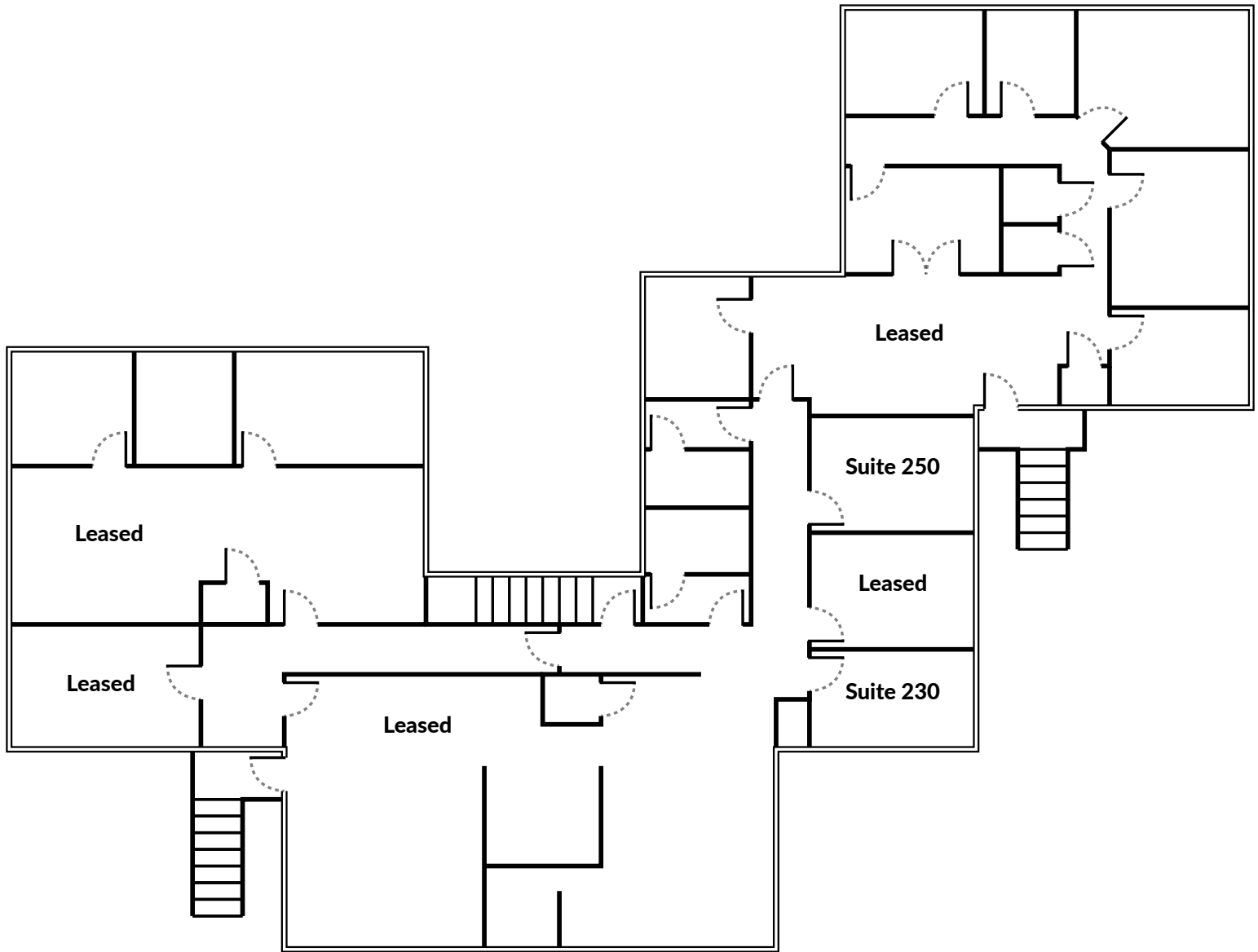
O: 719.630.2277

BLeigh@HoffLeigh.com



# Office Space for Lease

1765 S 8TH STREET. COLORADO SPRINGS, CO 80905



Rev: February 29, 2024



## Our Network Is Your Edge

All information is from sources deemed reliable and is subject to errors, omissions, change of price, rental, prior sale, and withdrawal without notice. Prospect should carefully verify each item of information contained herein.

## Steve Leigh

C: 719.338.4470

O: 719.630.2277

Steve@HoffLeigh.com

## Barbara Leigh

C: 719.331.2276

O: 719.630.2277

BLeigh@HoffLeigh.com





# Office Space for Lease

1765 S 8TH STREET, COLORADO SPRINGS, CO 80905



Rev: February 29, 2024



## Our Network Is Your Edge

All information is from sources deemed reliable and is subject to errors, omissions, change of price, rental, prior sale, and withdrawal without notice. Prospect should carefully verify each item of information contained herein.

## Steve Leigh

C: 719.338.4470

O: 719.630.2277

Steve@HoffLeigh.com

## Barbara Leigh

C: 719.331.2276

O: 719.630.2277

BLeigh@HoffLeigh.com