

Office Suites for Lease

6901 S PIERCE STREET, LITTLETON, CO 80128



Overview

Turn key office suites for lease in Columbine Valley. Building includes shared conference room, meeting room, break rooms, lots of windows, elevator, and an abundance of parking. The property is in close proximity to Southwest Plaza Mall and a large number of other restaurants and shops. Monument sign and two interior signs available.

Suite #:	Size:	Lease Rate:
225	1,167 SF	\$18.50 SF/YR (Gross)
310A	152 SF	\$500 / Month (Gross)
310D	114 SF	\$375 / Month (Gross)
380	906 SF	\$19.50 SF/YR (Gross)
384	478 SF	\$20.00 SF/YR (Gross)
390	858 SF	\$19.50 SF/YR (Gross)

Highlights

- Turn Key Office Suites
- Ample Parking
- Elevator
- Bathrooms on Every Floor

Property Details



Lease Rate

\$18.50 - \$39.47 SF/YR (Gross)



Zoning

ODP



Space Available

114 - 1,167 SF

Rev: March 18, 2024

Our Network Is Your Edge

All information is from sources deemed reliable and is subject to errors, omissions, change of price, rental, prior sale, and withdrawal without notice. Prospect should carefully verify each item of information contained herein.

Lisa Langiewicz

C: 970.903.4198

O: 720.572.5187

LisaL@HoffLeigh.com

Brandon Langiewicz, SIOR

C: 715.512.0265

O: 720.572.5187

Brandon@HoffLeigh.com

Office Suites for Lease

6901 S PIERCE STREET, LITTLETON, CO 80128

COMMON AREA



Rev: March 18, 2024

Our Network Is Your Edge

All information is from sources deemed reliable and is subject to errors, omissions, change of price, rental, prior sale, and withdrawal without notice. Prospect should carefully verify each item of information contained herein.

Lisa Langiewicz
C: 970.903.4198
O: 720.572.5187
LisaL@HoffLeigh.com

Brandon Langiewicz, SIOR
C: 715.512.0265
O: 720.572.5187
Brandon@HoffLeigh.com

Office Suites for Lease

6901 S PIERCE STREET, LITTLETON, CO 80128

SUITE 225

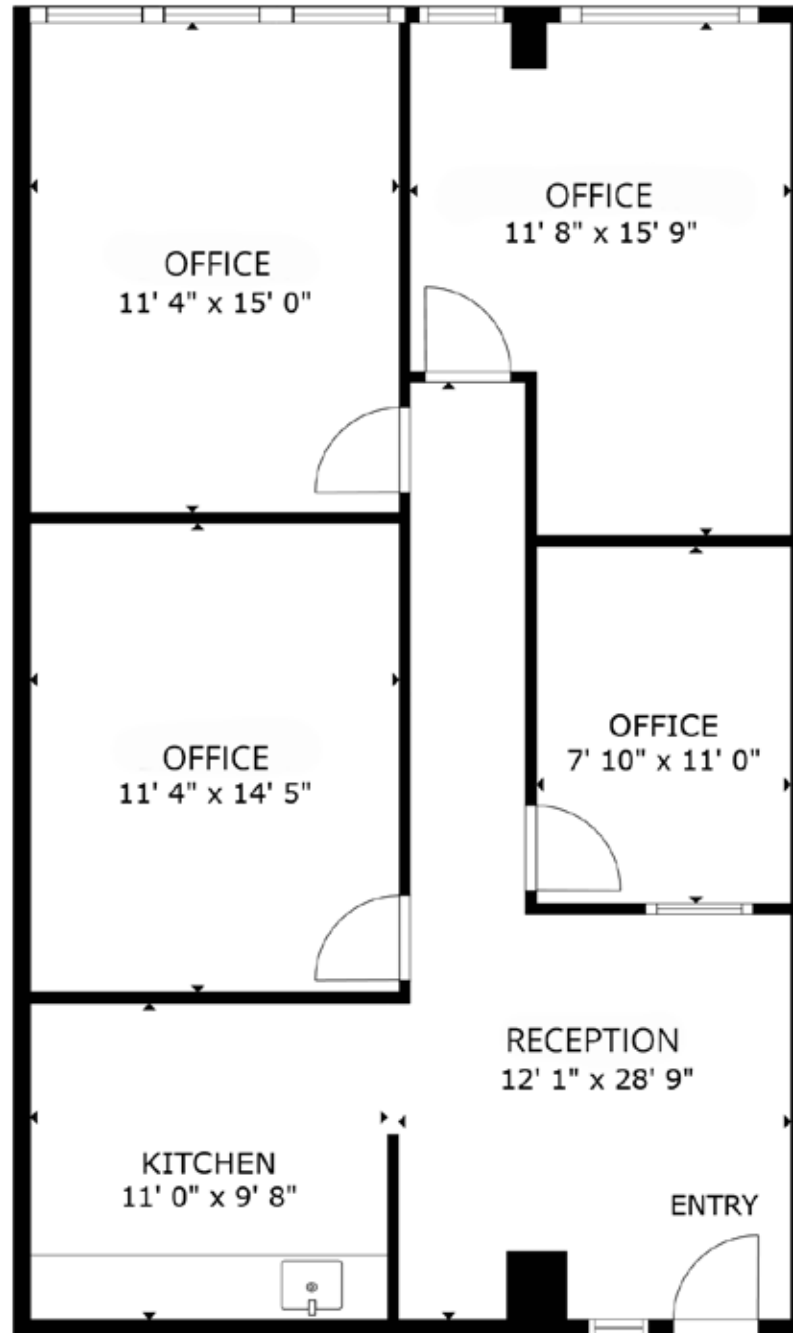


Rev: March 18, 2024

Office Suites for Lease

6901 S PIERCE STREET, LITTLETON, CO 80128

SUITE 225



FLOOR PLAN

Rev: March 18, 2024

Our Network Is Your Edge

All information is from sources deemed reliable and is subject to errors, omissions, change of price, rental, prior sale, and withdrawal without notice. Prospect should carefully verify each item of information contained herein.

Lisa Langiewicz
C: 970.903.4198
O: 720.572.5187
LisaL@HoffLeigh.com

Brandon Langiewicz, SIOR
C: 715.512.0265
O: 720.572.5187
Brandon@HoffLeigh.com

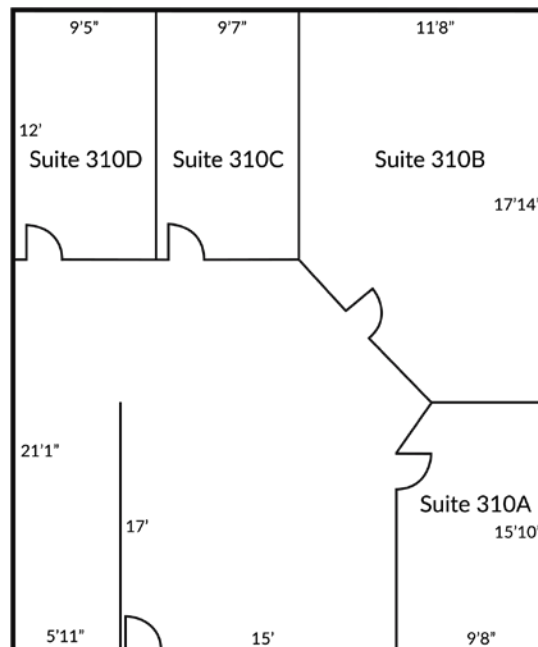
Office Suites for Lease

6901 S PIERCE STREET, LITTLETON, CO 80128

SUITE 310



Suite 310



Rev: March 18, 2024

Office Suites for Lease

6901 S PIERCE STREET, LITTLETON, CO 80128

SUITE 380



Rev: March 18, 2024

Our Network Is Your Edge

All information is from sources deemed reliable and is subject to errors, omissions, change of price, rental, prior sale, and withdrawal without notice. Prospect should carefully verify each item of information contained herein.

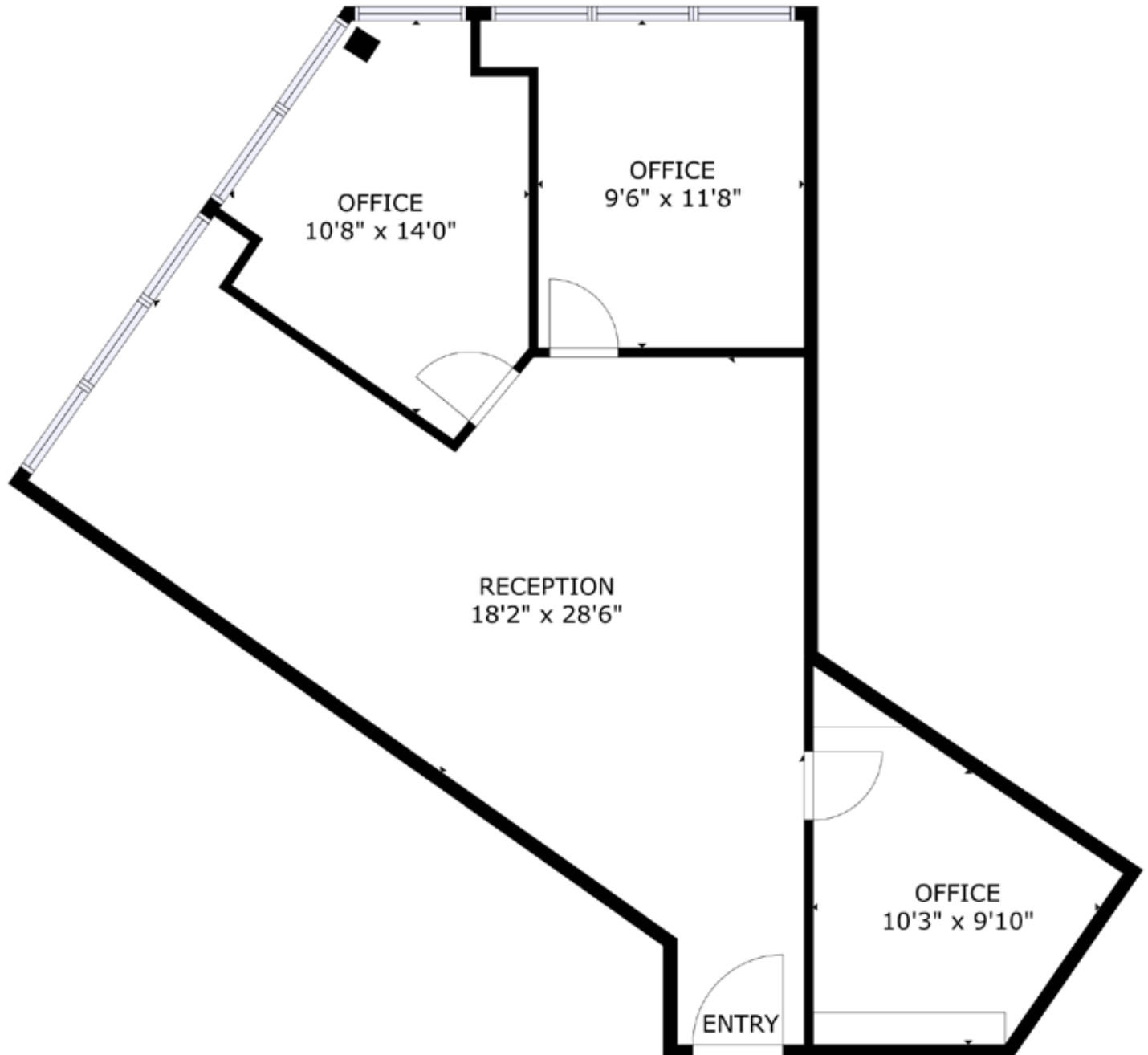
Lisa Langiewicz
C: 970.903.4198
O: 720.572.5187
LisaL@HoffLeigh.com

Brandon Langiewicz, SIOR
C: 715.512.0265
O: 720.572.5187
Brandon@HoffLeigh.com

Office Suites for Lease

6901 S PIERCE STREET, LITTLETON, CO 80128

SUITE 380



Rev: March 18, 2024

Our Network Is Your Edge

All information is from sources deemed reliable and is subject to errors, omissions, change of price, rental, prior sale, and withdrawal without notice. Prospect should carefully verify each item of information contained herein.

Lisa Langiewicz
C: 970.903.4198
O: 720.572.5187
LisaL@HoffLeigh.com

Brandon Langiewicz, SIOR
C: 715.512.0265
O: 720.572.5187
Brandon@HoffLeigh.com

Office Suites for Lease

6901 S PIERCE STREET, LITTLETON, CO 80128

SUITE 390

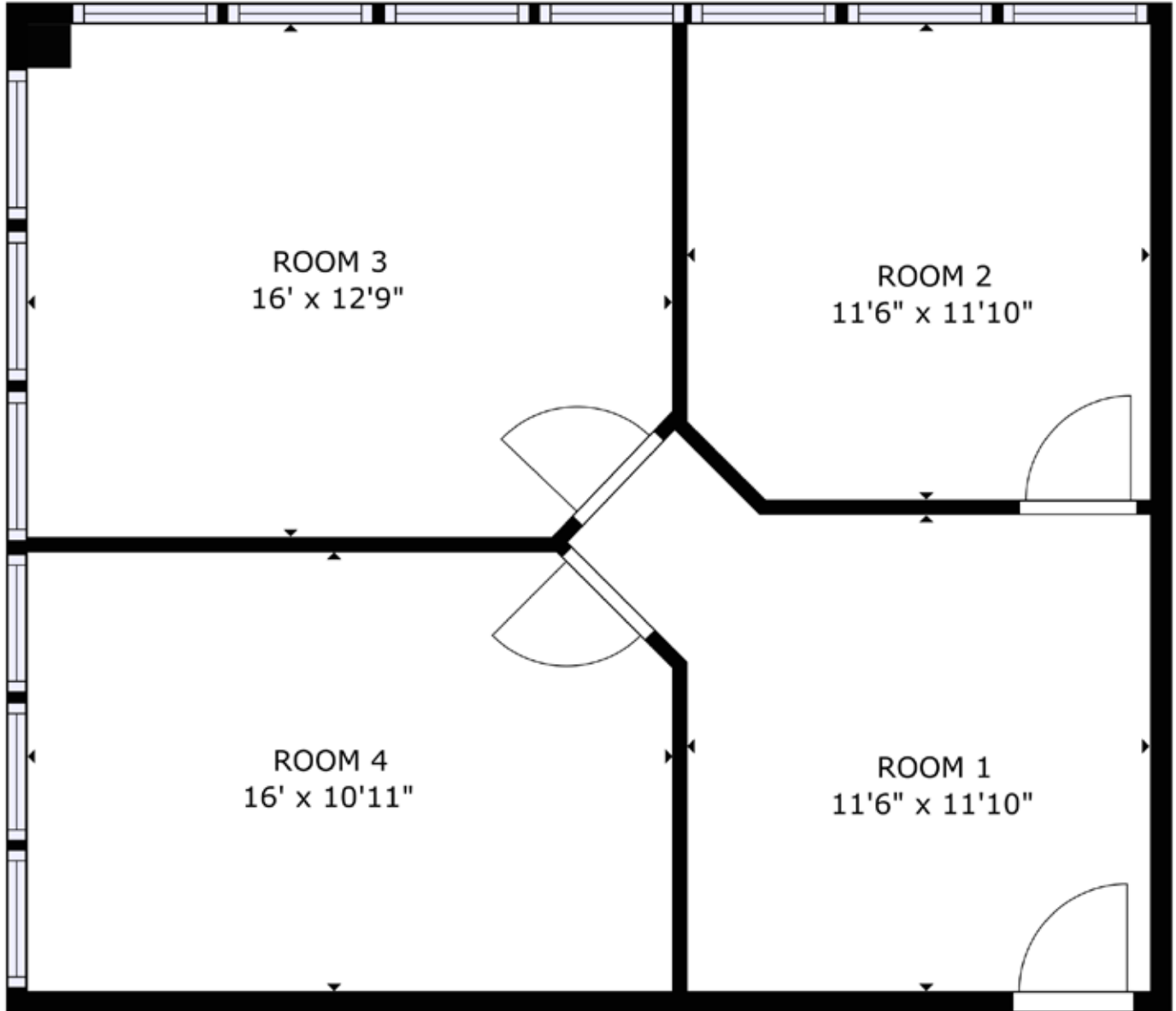


Rev: March 18, 2024

Office Suites for Lease

6901 S PIERCE STREET, LITTLETON, CO 80128

SUITE 390



Rev: March 18, 2024

Our Network Is Your Edge

All information is from sources deemed reliable and is subject to errors, omissions, change of price, rental, prior sale, and withdrawal without notice. Prospect should carefully verify each item of information contained herein.

Lisa Langiewicz

C: 970.903.4198

O: 720.572.5187

LisaL@HoffLeigh.com

Brandon Langiewicz, SIOR

C: 715.512.0265

O: 720.572.5187

Brandon@HoffLeigh.com

Office Suites for Lease

6901 S PIERCE STREET, LITTLETON, CO 80128

6901 S Pierce St, Littleton, Colorado, 80128

DEMOGRAPHICS



90,071
Population



Median Age



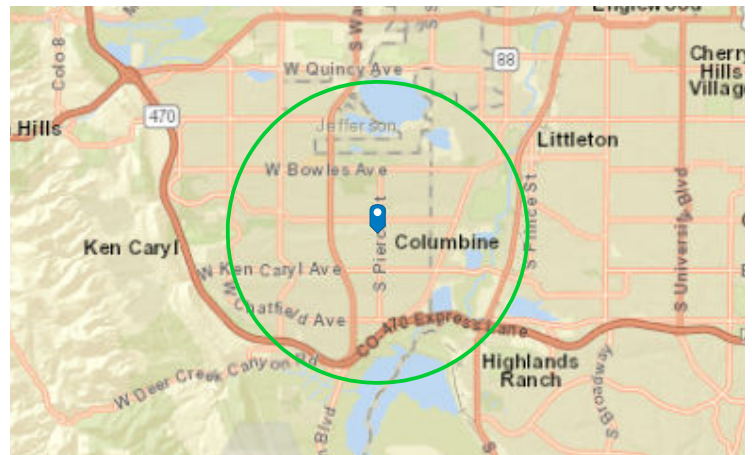
Average
Household Size



\$102,356
Median Household
Income

TRAFFIC COUNT

Cross street	Traffic 1	Distance
W Ottawa Ave	14,649	0.1
W Ottawa Ave	15,977	0.1
S Pierce St	1,962	0.1
W Portland Ave	1,734	0.1
W Portland Pl	1,944	0.1

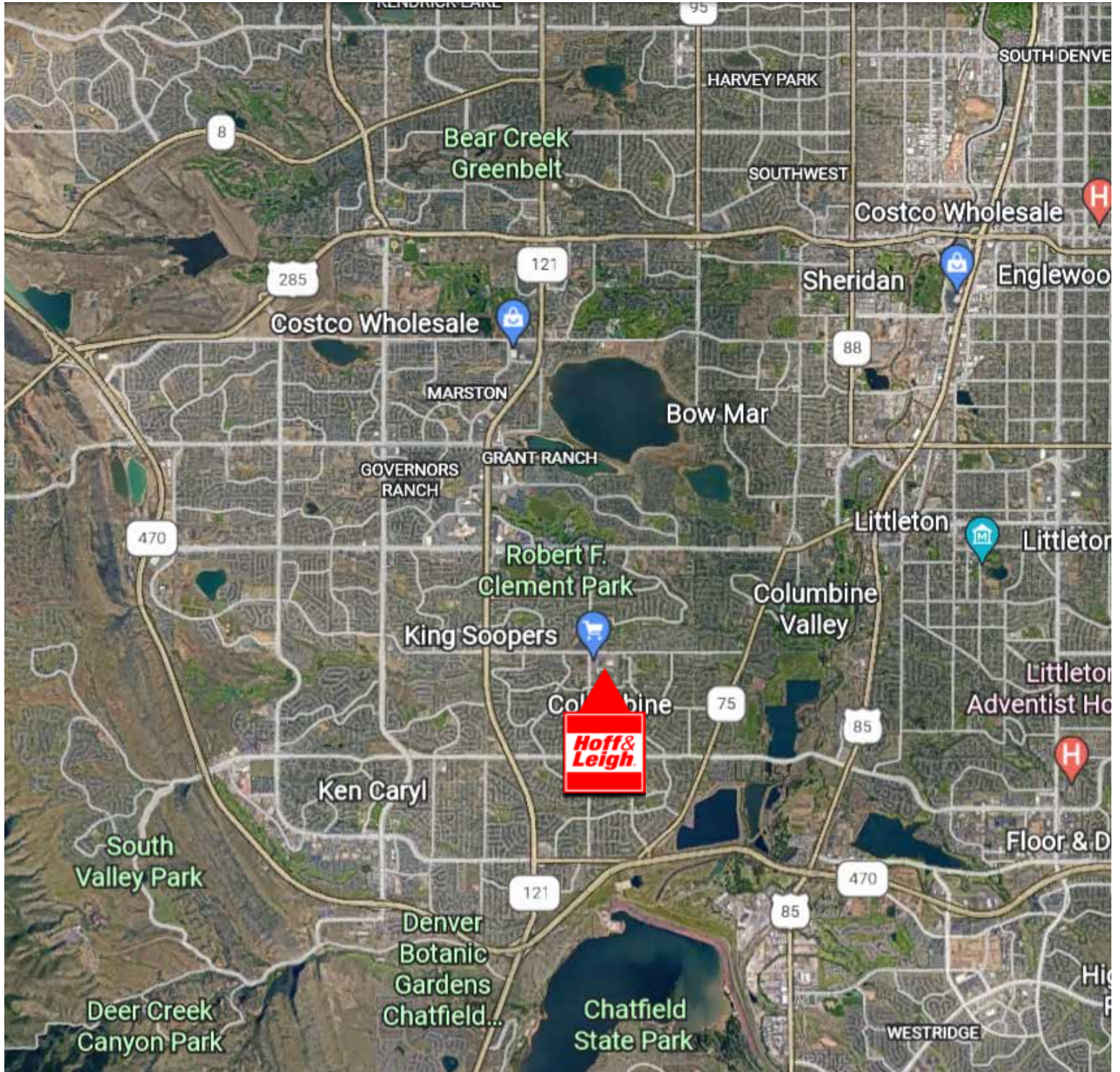


Rev: March 18, 2024



Office Suites for Lease

6901 S PIERCE STREET, LITTLETON, CO 80128



Rev: March 18, 2024



Our Network Is Your Edge

All information is from sources deemed reliable and is subject to errors, omissions, change of price, rental, prior sale, and withdrawal without notice. Prospect should carefully verify each item of information contained herein.

Lisa Langiewicz

C: 970.903.4198

O: 720.572.5187

LisaL@HoffLeigh.com

Brandon Langiewicz, SIOR

C: 715.512.0265

O: 720.572.5187

Brandon@HoffLeigh.com