

# Office Space for Lease

4465 NORTHPARK DRIVE, COLORADO SPRINGS, CO 80907

Explore Ste. 400  
Virtual Tour

## Overview

Discover the unparalleled experience of our premier professional building, boasting exceptional value and an unbeatable location! Situated at the crossroads of I-25 and Garden of the Gods Road, you'll be just 5 minutes away from the vibrant downtown scene, with delicious dining options, banks, charming shops, and engaging meeting spaces.

No need to worry about parking - we've got you covered! Plus, enjoy the breathtaking mountain views that surround you. Our exclusive Suite 400 spans the entire fourth floor, featuring a spacious conference room, private restrooms, numerous offices, and the opportunity for building signage. Don't miss the chance to explore the virtual tour by clicking on the suite number!

Ready to learn more or schedule a private showing? Get in touch with Guy Cox at (719) 357-7494 or Steve Leigh at (719) 338-4470.

## Available Spaces

Suite:	Available Space:	Lease Rate:
200	900 SF	\$1,100 / Month
307	400 SF	\$600 / Month
<b>400</b>	6,000 SF	\$16.00 - \$20.00 SF/YR

## Property Details



### Lease Rate

\$14.66 - \$20.00 SF/YR (Gross)



### Space Available

400 - 6,000 SF

Rev: February 5, 2024

### Our Network Is Your Edge

All information is from sources deemed reliable and is subject to errors, omissions, change of price, rental, prior sale, and withdrawal without notice. Prospect should carefully verify each item of information contained herein.

### Guy Cox

C: 719.357.7494

O: 719.630.2277

GCox@HoffLeigh.com

### Steve Leigh

C: 719.338.4470

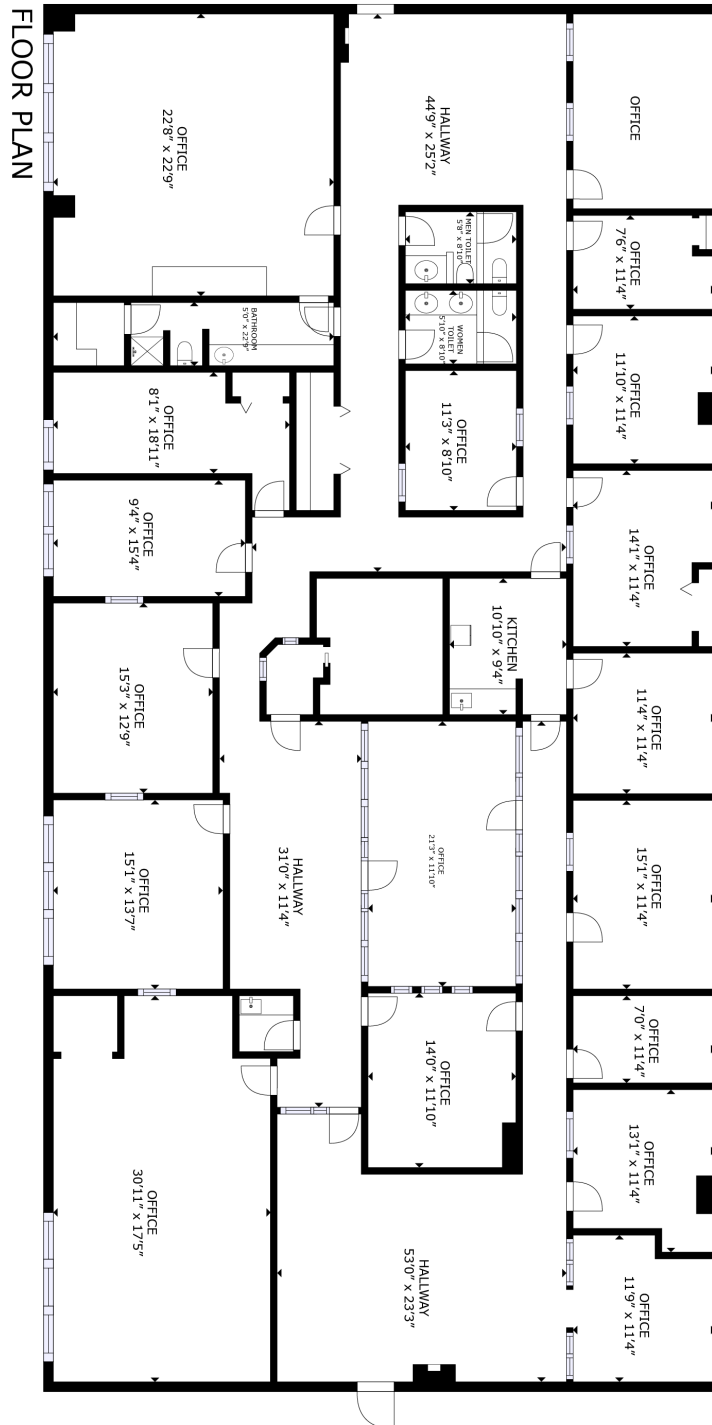
O: 719.630.2277

Steve@HoffLeigh.com

# Office Space for Lease

4465 NORTHPARK DRIVE, COLORADO SPRINGS, CO 80907

## Suite 400



GROSS INTERNAL AREA  
FLOOR PLAN: 5,649 sq. ft.  
SIZES AND DIMENSIONS ARE APPROXIMATE. ACTUAL MAY VARY.

**Matterport**

Rev: February 5, 2024

### Our Network Is Your Edge

All information is from sources deemed reliable and is subject to errors, omissions, change of price, rental, prior sale, and withdrawal without notice. Prospect should carefully verify each item of information contained herein.

### Guy Cox

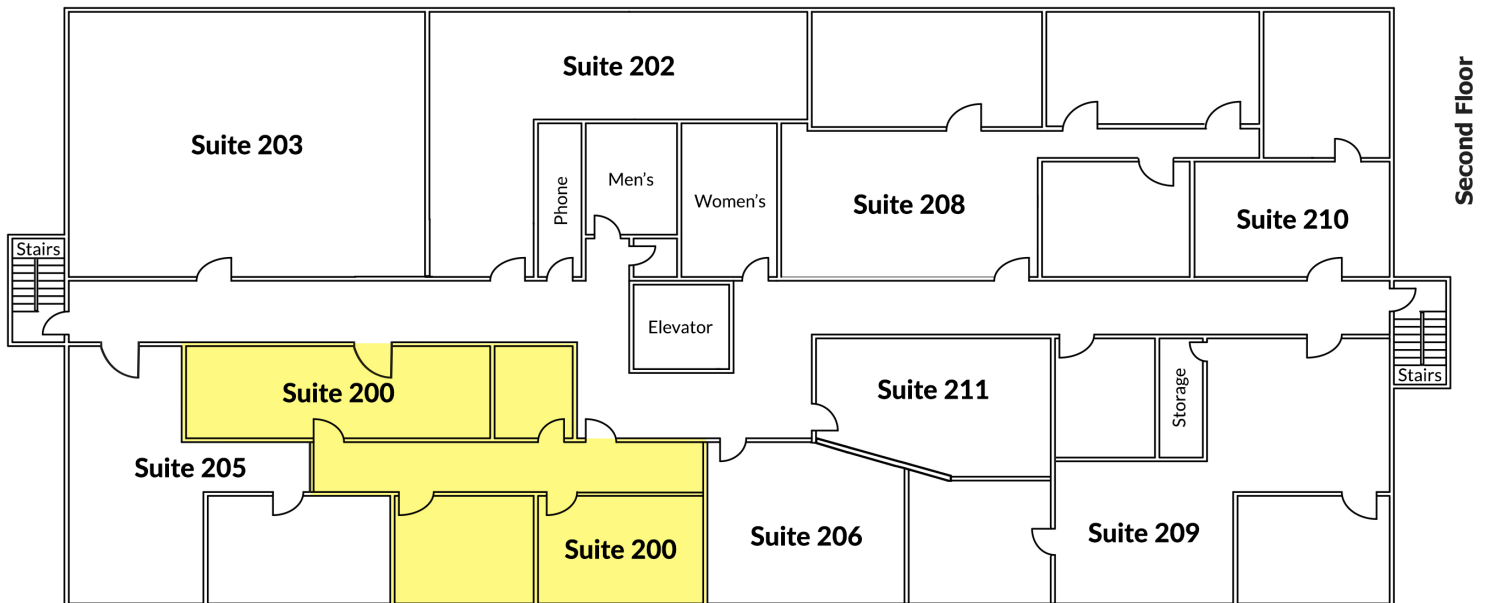
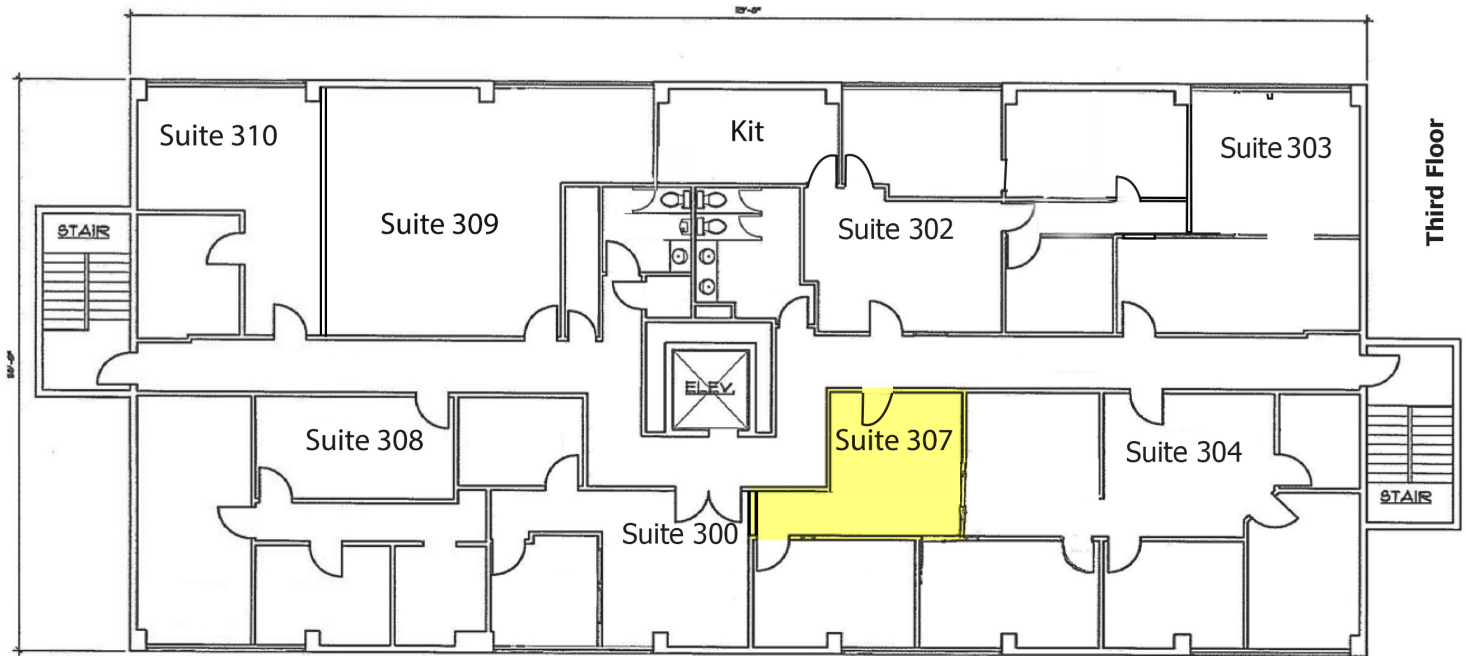
C: 719.357.7494  
O: 719.630.2277  
GCox@HoffLeigh.com

### Steve Leigh

C: 719.338.4470  
O: 719.630.2277  
Steve@HoffLeigh.com

# Office Space for Lease

4465 NORTH PARK DRIVE, COLORADO SPRINGS, CO 80907



Rev: February 5, 2024

## Our Network Is Your Edge

All information is from sources deemed reliable and is subject to errors, omissions, change of price, rental, prior sale, and withdrawal without notice. Prospect should carefully verify each item of information contained herein.

## Guy Cox

C: 719.357.7494

O: 719.630.2277

GCox@HoffLeigh.com

## Steve Leigh

C: 719.338.4470

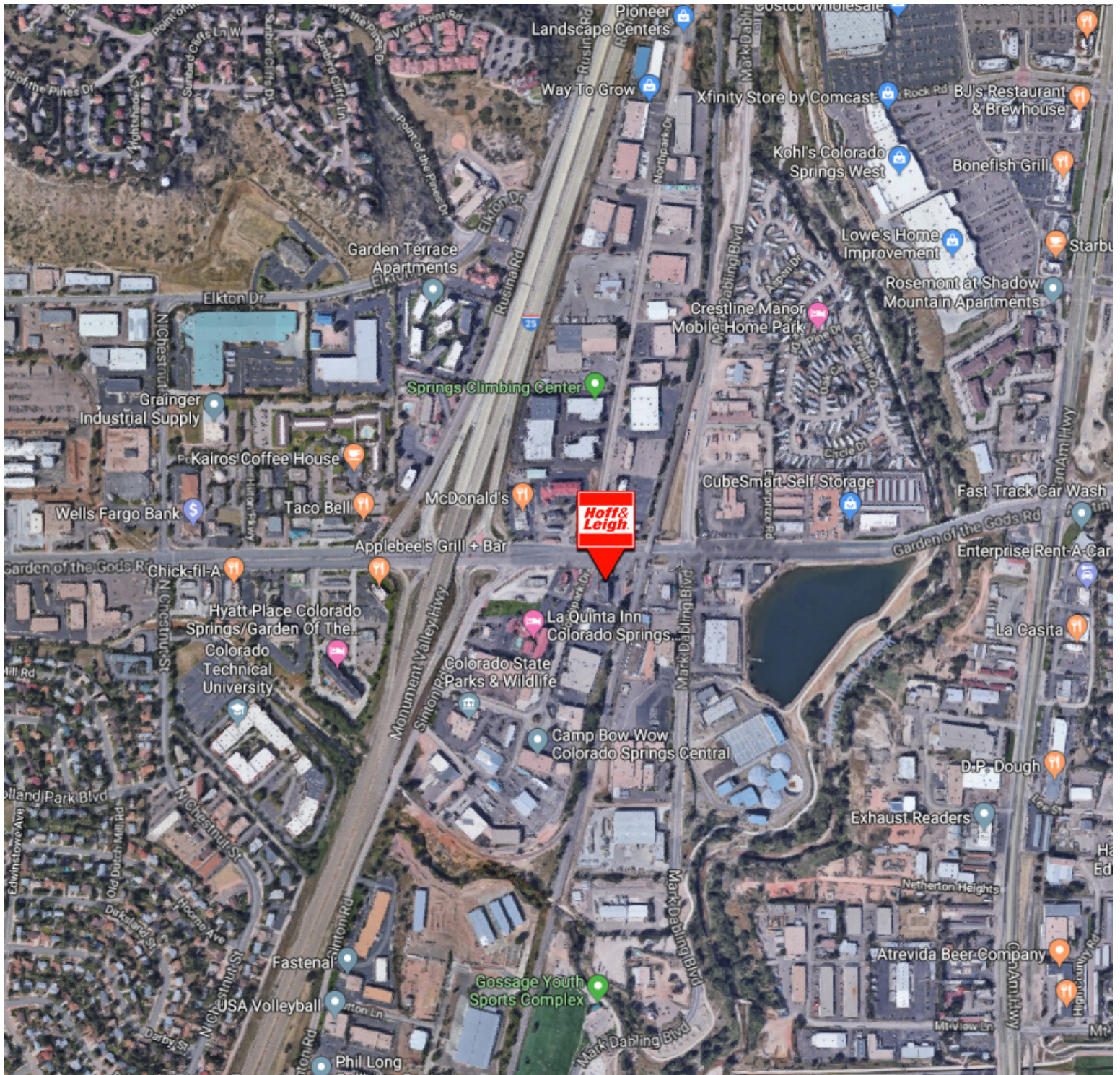
O: 719.630.2277

Steve@HoffLeigh.com



# Office Space for Lease

4465 NORTHPARK DRIVE, COLORADO SPRINGS, CO 80907



Rev: February 5, 2024

## Our Network Is Your Edge

All information is from sources deemed reliable and is subject to errors, omissions, change of price, rental, prior sale, and withdrawal without notice. Prospect should carefully verify each item of information contained herein.

## Guy Cox

C: 719.357.7494  
O: 719.630.2277  
GCox@HoffLeigh.com

## Steve Leigh

C: 719.338.4470  
O: 719.630.2277  
Steve@HoffLeigh.com