

# Industrial Building for Lease

2833 NORTH EL PASO STREET, COLORADO SPRINGS, CO 80907



## Overview

This is an exceptionally clean office/warehouse facility located 1 block south of Fillmore at El Paso Street. Each unit has a front-entry, 12' overhead door, 14' clear-span warehouse, 2 offices, restroom, and slop-sink in the work area. We currently have 1 unit for rent: approximately 2,100 SF for \$2,950 per month.

For a private showing and all the confidential financial details, call Holly Trinidad: 719-337-0999 or Tim Leigh: 719-337-9551.

## Property Details



**Lease Rate**  
\$2,950 / Month  
(+ Utilities)



**Space Available**  
2,100 SF

Rev: January 29, 2024

### Our Network Is Your Edge

All information is from sources deemed reliable and is subject to errors, omissions, change of price, rental, prior sale, and withdrawal without notice. Prospect should carefully verify each item of information contained herein.

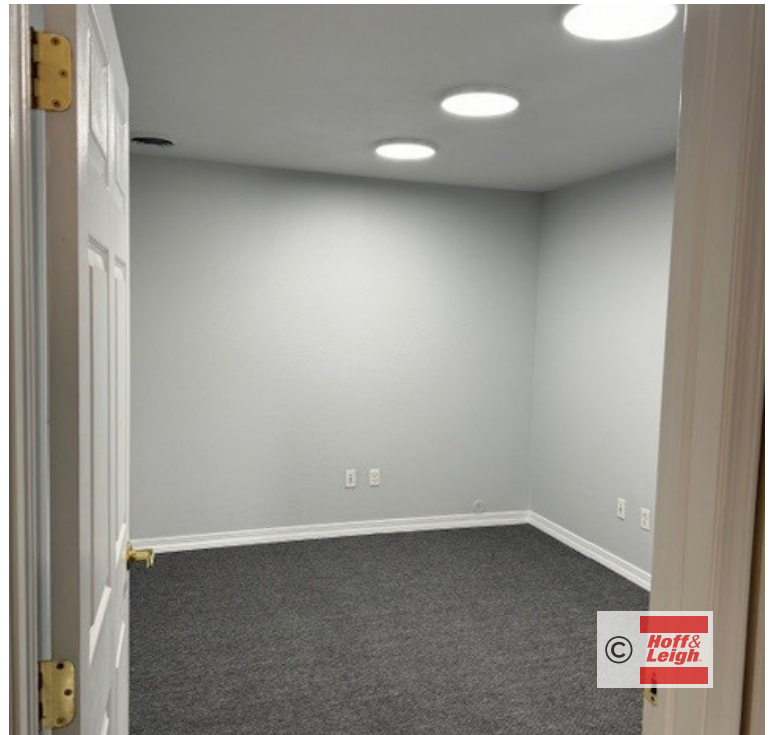
**Holly Trinidad**  
C: 719.337.0999  
O: 719.630.2277  
Holly@HoffLeigh.com

**Tim Leigh**  
C: 719.337.9551  
O: 719.630.2277  
Tim@HoffLeigh.com



# Industrial Building for Lease

2833 NORTH EL PASO STREET, COLORADO SPRINGS, CO 80907



Rev: January 29, 2024



## Our Network Is Your Edge

All information is from sources deemed reliable and is subject to errors, omissions, change of price, rental, prior sale, and withdrawal without notice. Prospect should carefully verify each item of information contained herein.

## Holly Trinidad

C: 719.337.0999

O: 719.630.2277

Holly@HoffLeigh.com

## Tim Leigh

C: 719.337.9551

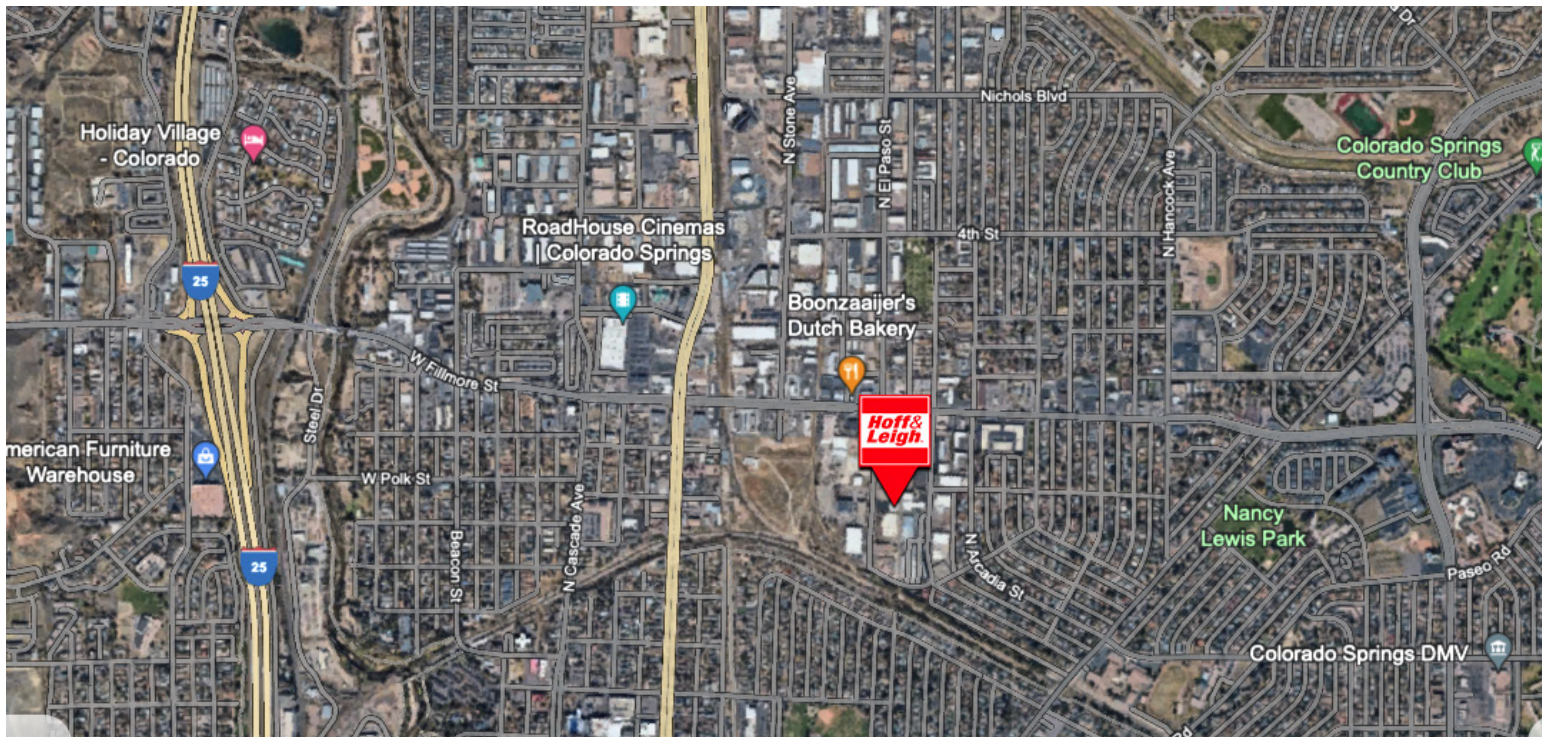
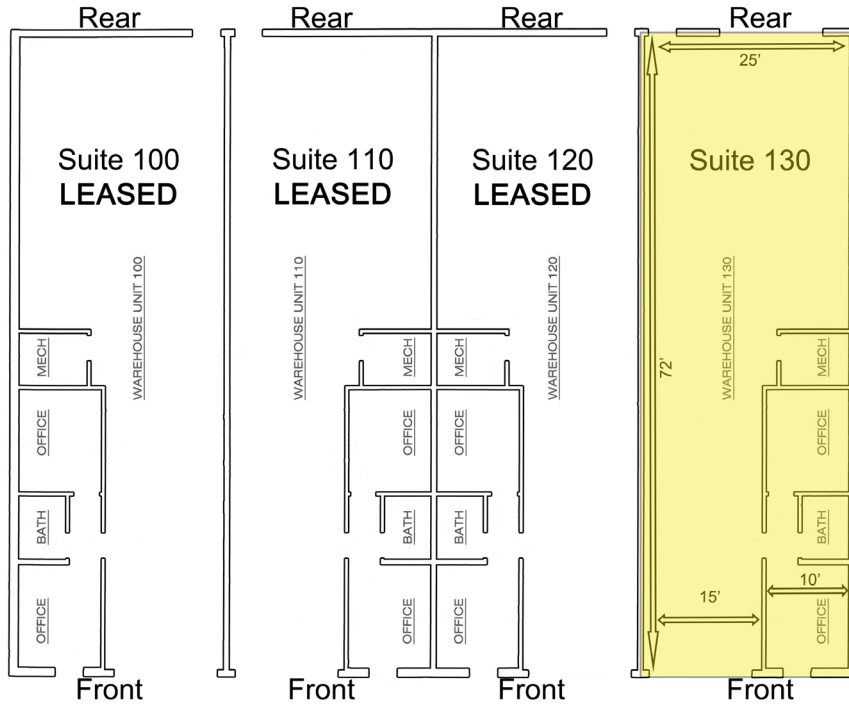
O: 719.630.2277

Tim@HoffLeigh.com



# Industrial Building for Lease

2833 NORTH EL PASO STREET, COLORADO SPRINGS, CO 80907



Rev: January 29, 2024