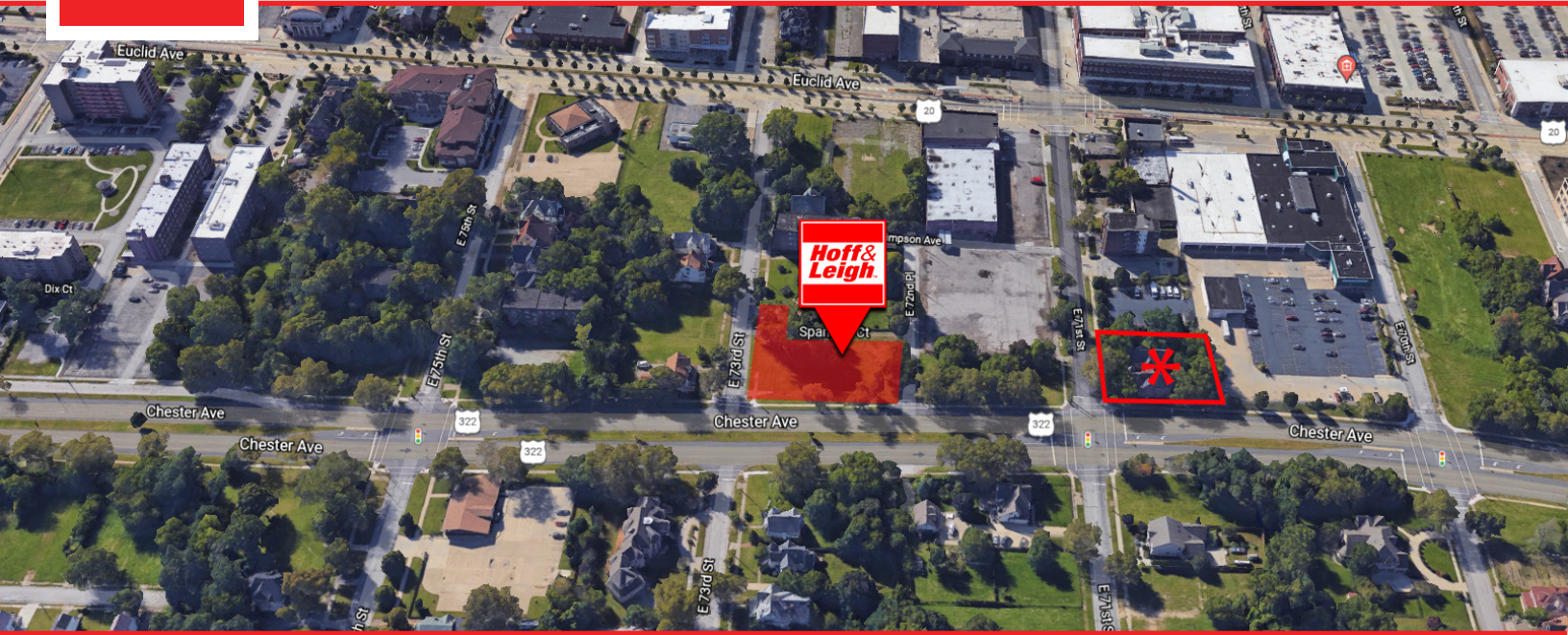




Rare: Development Land Site: Chester Avenue - Midtown

CHESTER AVENUE & E 73RD STREET, CLEVELAND, OH 44103



Overview


Development opportunity at the corner of Chester Avenue between E 72nd Place and E 73rd Street. Included is 5 parcels totaling +/- 0.46 acres. Located in the Midtown mixed-use district.

* Additional +/- 0.36 acres of development land available at 1944 E 71st Street.


Highlights

- Midtown
- 182' of Frontage on Chester Avenue
- Opportunity Zone
- Health-Tech Corridor
- Corner

Property Details

 **Sales Price**
\$240,000

 **Lot Size**
+/- 0.46 Acres
(Combined)

 **Zoning**
1F-A / MMUD-2

Rev: June 5, 2024



Our Network Is Your Edge

All information is from sources deemed reliable and is subject to errors, omissions, change of price, rental, prior sale, and withdrawal without notice. Prospect should carefully verify each item of information contained herein.

Joe Zumpano

C: 330.990.0847

O: 330.940.9360

JZumpano@HoffLeigh.com

Chad Whitmer

C: 330.714.1145

O: 330.940.9360

CWhitmer@HoffLeigh.com

Rare: Development Land Site: Chester Avenue - Midtown

CHESTER AVENUE & E 73RD STREET, CLEVELAND, OH 44103

1946 E 73rd St, Cleveland, Ohio, 44103

DEMOGRAPHICS



111,768
Population



33.3
Median Age



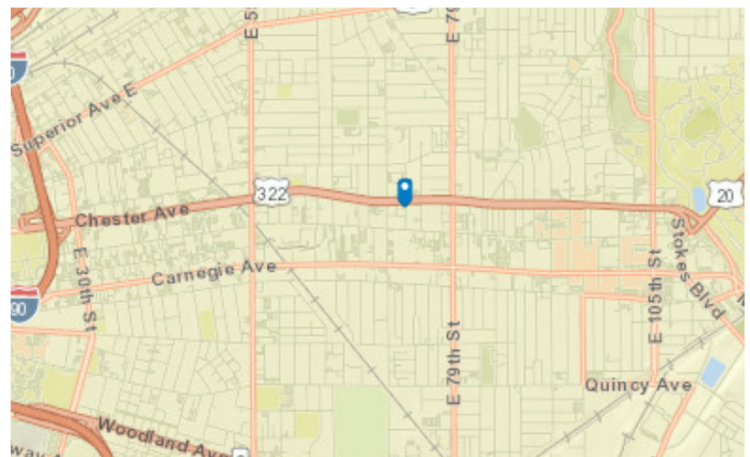
2.0
Average Household Size



\$29,776
Median Household Income

TRAFFIC COUNT

Cross street	VPD	Distance
E 75th St	5,917	0.1
E 73rd St	5,425	0.1
Chester Ave	1,974	0.1
Euclid Ave	2,921	0.2
E 73rd St	2,350	0.2



Rev: June 5, 2024



Our Network Is Your Edge

All information is from sources deemed reliable and is subject to errors, omissions, change of price, rental, prior sale, and withdrawal without notice. Prospect should carefully verify each item of information contained herein.

Joe Zumpano

C: 330.990.0847

O: 330.940.9360

JZumpano@HoffLeigh.com

Chad Whitmer

C: 330.714.1145

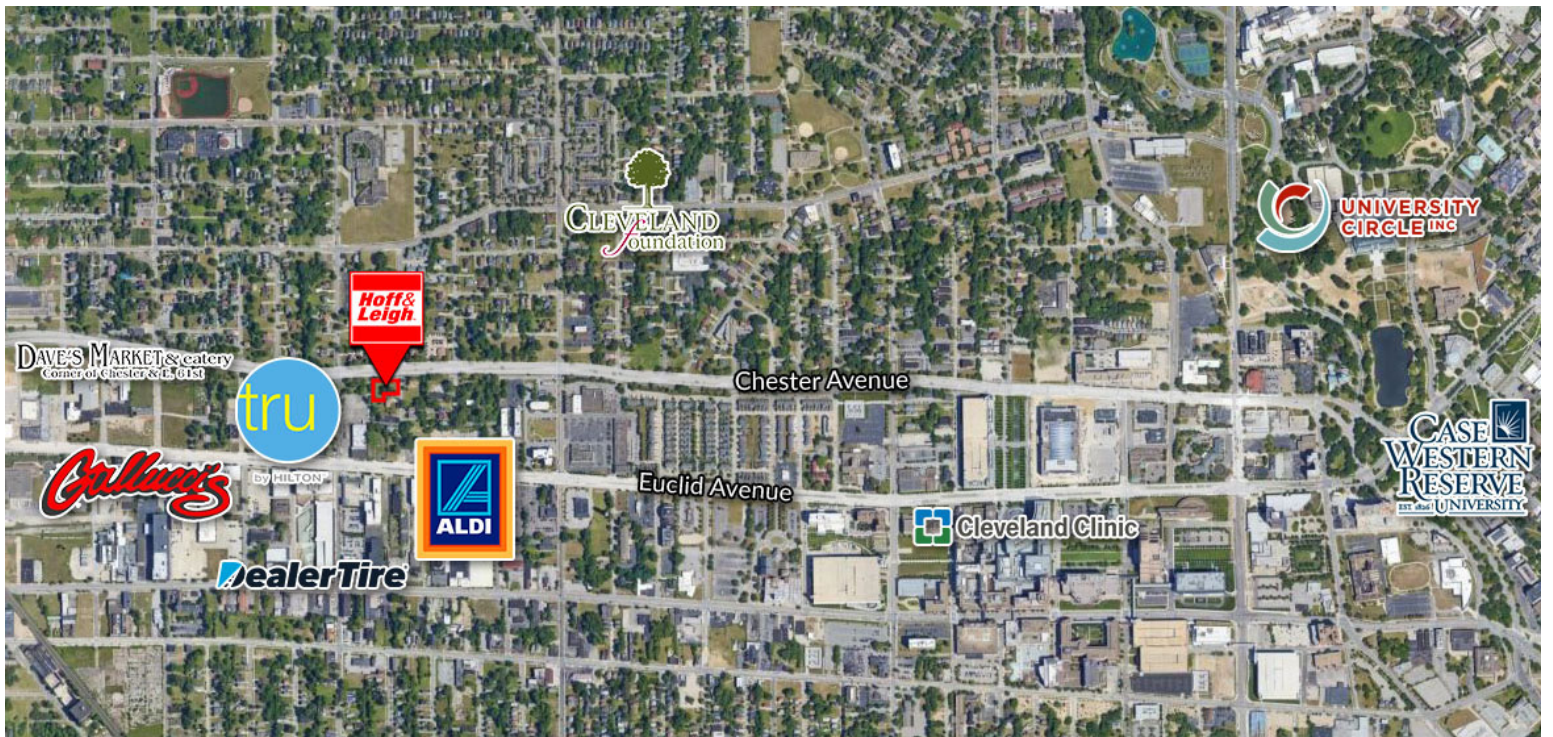
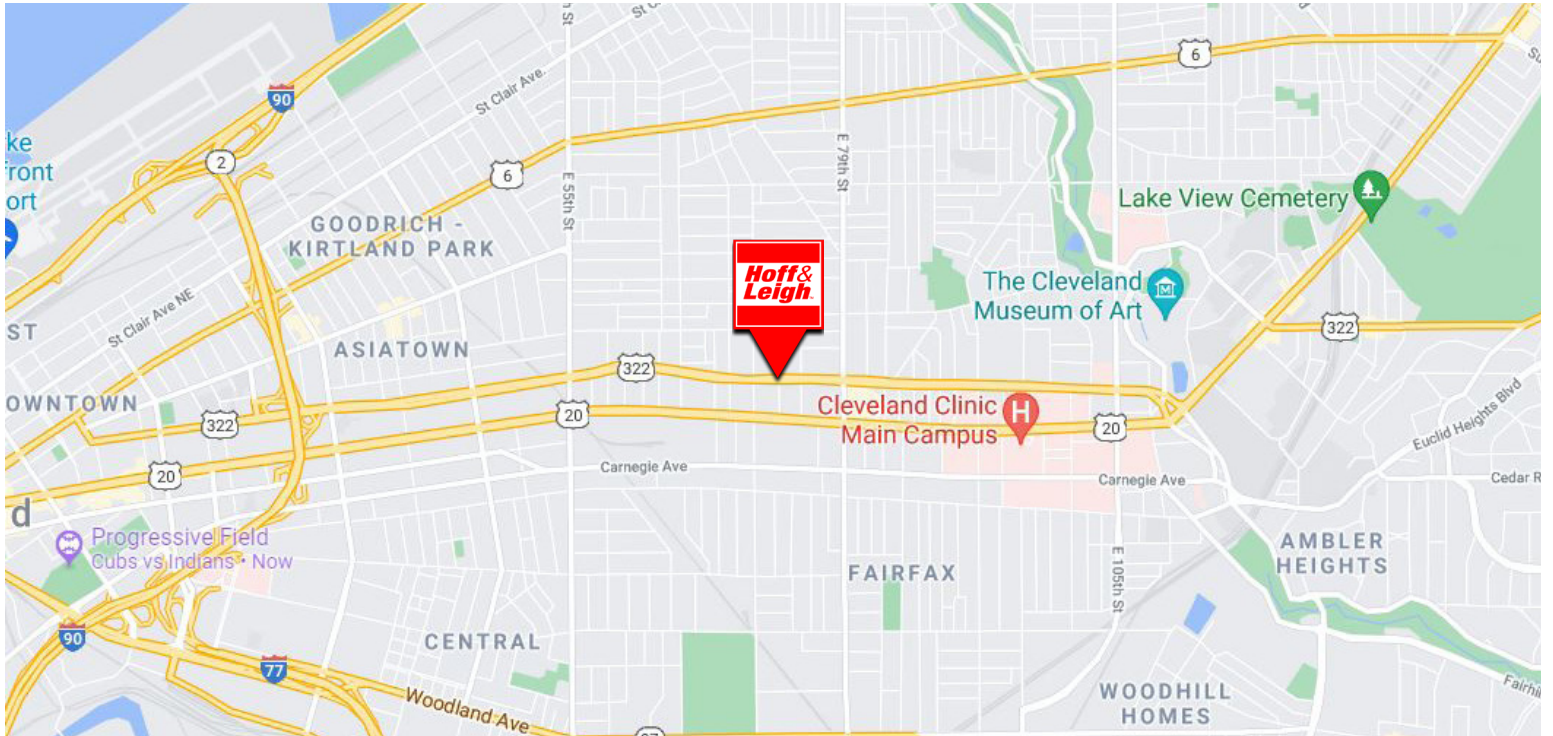
O: 330.940.9360

CWhitmer@HoffLeigh.com



Rare: Development Land Site: Chester Avenue - Midtown

CHESTER AVENUE & E 73RD STREET, CLEVELAND, OH 44103



Rev: June 5, 2024



Our Network Is Your Edge

All information is from sources deemed reliable and is subject to errors, omissions, change of price, rental, prior sale, and withdrawal without notice. Prospect should carefully verify each item of information contained herein.

Joe Zumpano

C: 330.990.0847

O: 330.940.9360

JZumpano@HoffLeigh.com

Chad Whitmer

C: 330.714.1145

O: 330.940.9360

CWhitmer@HoffLeigh.com