

OFFICE SPACE FOR LEASE

411 S Cascade Avenue, Colorado Springs, CO 80903



OVERVIEW

FOR LEASE: 411 S Cascade Avenue. This is a very nice, ground level, 1,650 SF multiple-office lease space with good parking and exceptional mountain views. It's located within walking distance of the courthouse downtown, just off of Cimarron Street on S Cascade Avenue.

For a private showing and all of the confidential financial details, call Steve Leigh at 719-338-4470.

HIGHLIGHTS

Suite:	Space Available:	Lease Rate:
100	1,650 SF	\$2,050 / Month (+ Utilities)



Lease Rate:

\$2,050 / Month
(+ Utilities)



Space Available:

1,650 SF



Lot Size:

9,500 SF



Zoning:

FBZ-CEN

OUR NETWORK IS YOUR EDGE.

All information is from sources deemed reliable and is subject to errors, omissions, change of price, rental, prior sale, and withdrawal without notice. Prospect should carefully verify each item of information contained herein.

Steve Leigh

O: 719.630.2277

C: 719.338.4470

steve@hoffleigh.com

Barbara Leigh

O: 719.630.2277

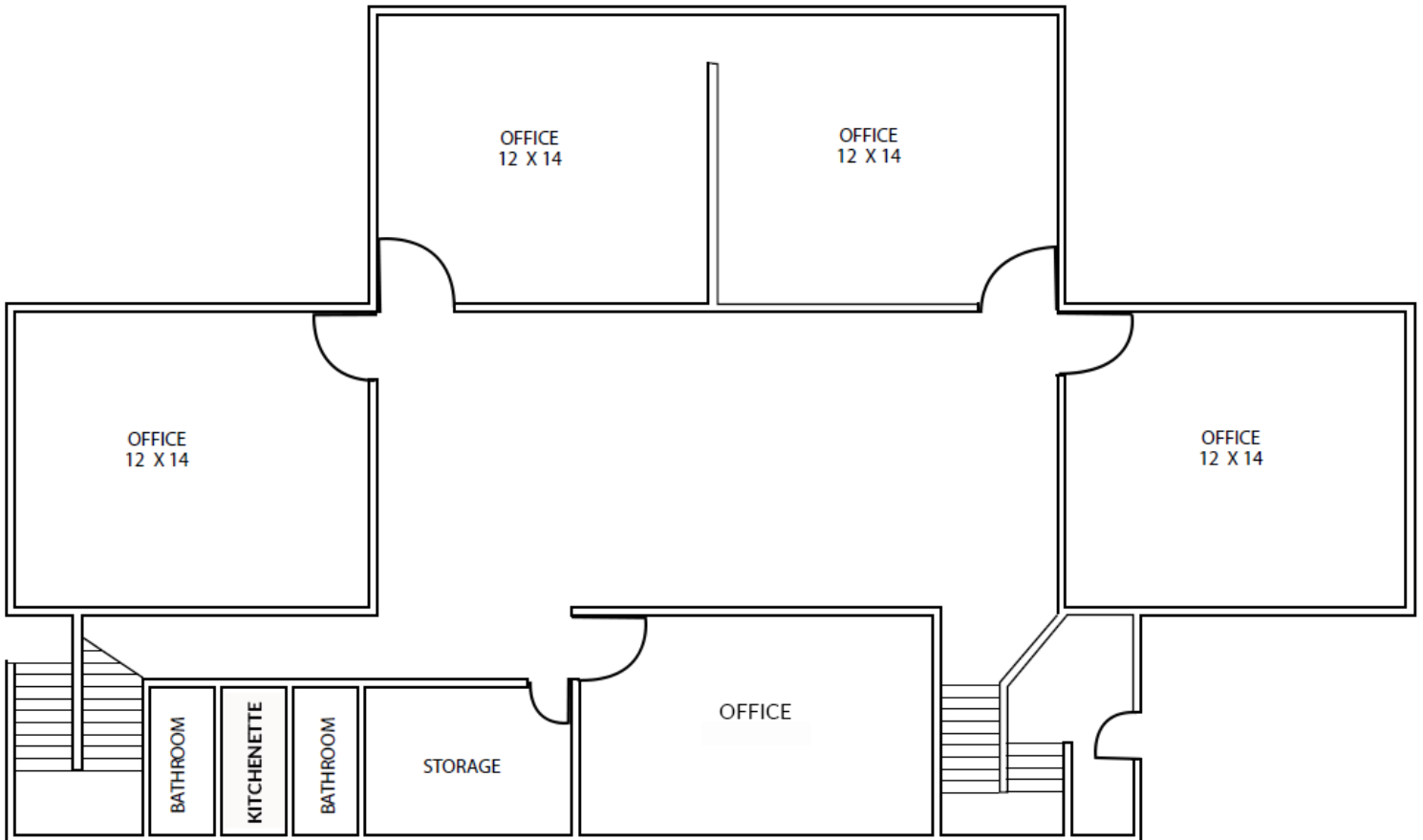
C: 719.331.2276

bleigh@hoffleigh.com



OFFICE SPACE FOR LEASE

411 S Cascade Avenue, Colorado Springs, CO 80903



OUR NETWORK IS YOUR EDGE.

All information is from sources deemed reliable and is subject to errors, omissions, change of price, rental, prior sale, and withdrawal without notice. Prospect should carefully verify each item of information contained herein.

Steve Leigh

O: 719.630.2277

C: 719.338.4470

steve@hoffleigh.com

Barbara Leigh

O: 719.630.2277

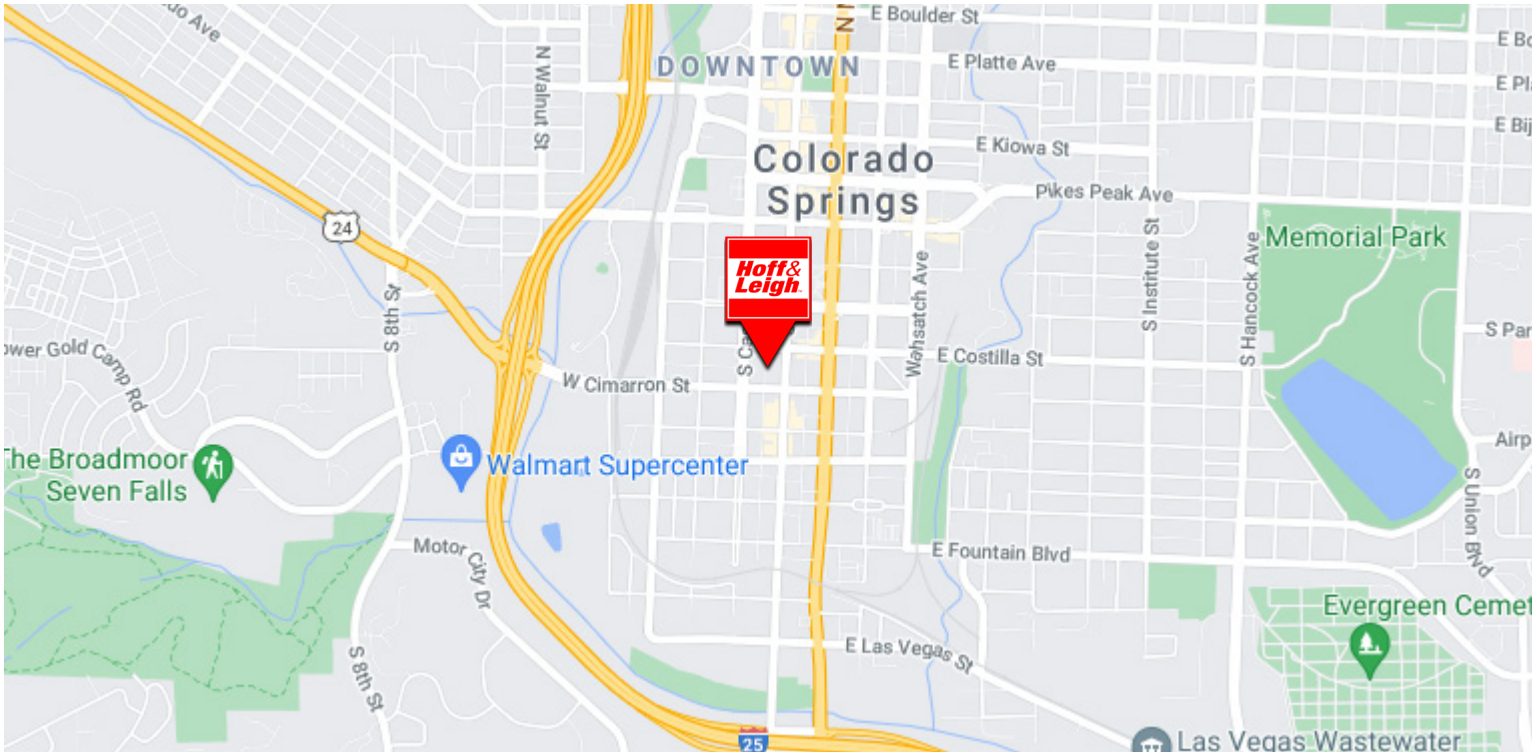
C: 719.331.2276

bleigh@hoffleigh.com



OFFICE SPACE FOR LEASE

411 S Cascade Avenue, Colorado Springs, CO 80903



OUR NETWORK IS YOUR EDGE.

All information is from sources deemed reliable and is subject to errors, omissions, change of price, rental, prior sale, and withdrawal without notice. Prospect should carefully verify each item of information contained herein.

Steve Leigh

O: 719.630.2277

C: 719.338.4470

steve@hoffleigh.com

Barbara Leigh

O: 719.630.2277

C: 719.331.2276

bleigh@hoffleigh.com