



MEDICAL OFFICE FOR LEASE

629 N. Nevada Avenue, Colorado Springs, CO 80903



OVERVIEW

NEW TO THE MARKET: Now for lease, 4,998 square feet.

This lease space is currently a medical office that will be available late-summer, 2021. The landlord is prepared to add some TLC or remodel to suite for the right tenant / financial conditions.

The asking rate is \$14.00 NNN.

For a private showing and all the confidential financial details, call Tim Leigh: 719-337-9551 or Holly Trinidad: 719-337-0999



Lease Rate:

\$14.00 SF/YR (NNN)



Space Available:

4,998 SF

OUR NETWORK IS YOUR EDGE.

All information is from sources deemed reliable and is subject to errors, omissions, change of price, rental, prior sale, and withdrawal without notice. Prospect should carefully verify each item of information contained herein.

Tim Leigh

O: 719.630.2277

C: 719.337.9551

tim@hoffleigh.com

Holly Trinidad

O: 719.630.2277

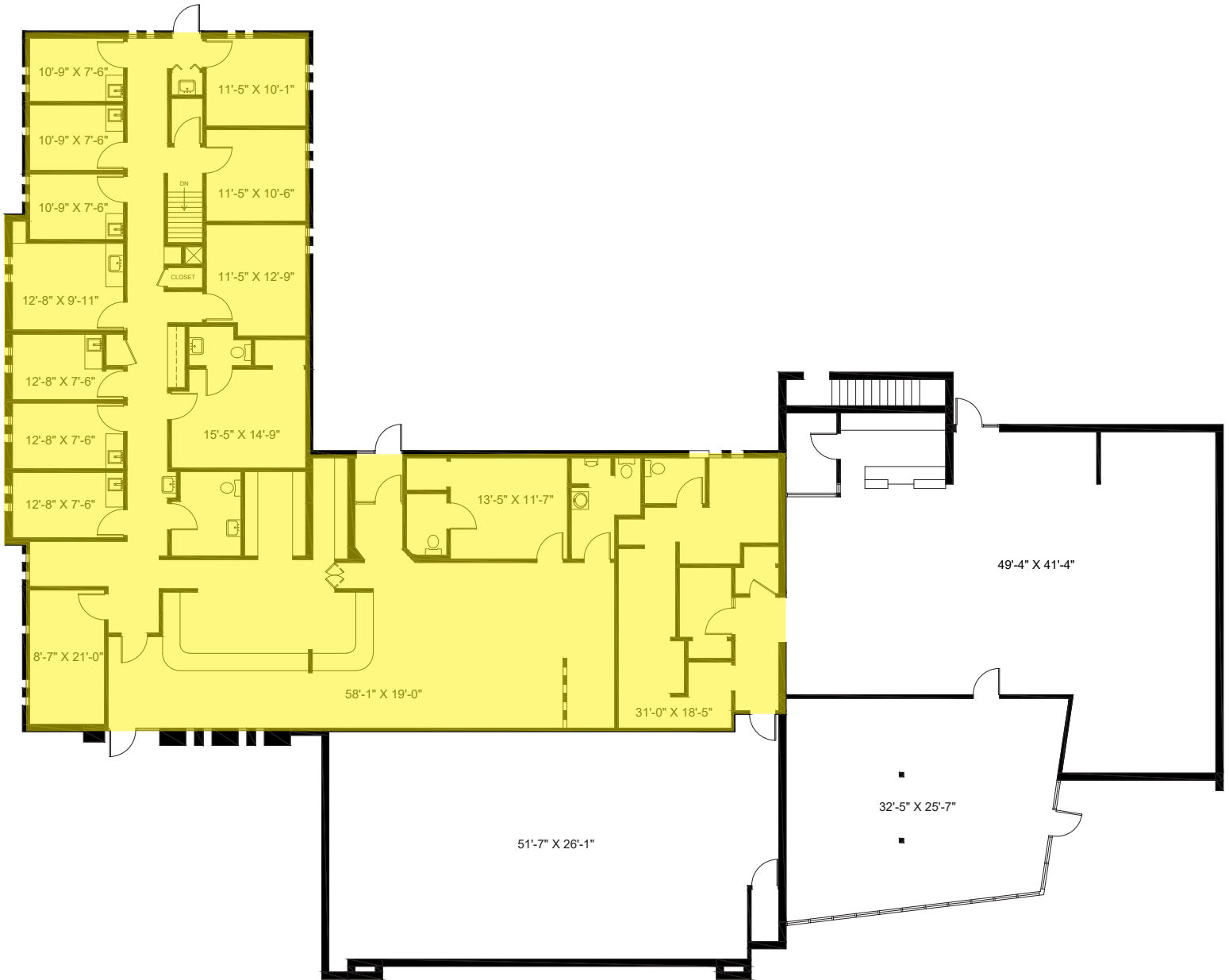
C: 719.337.0999

holly@hoffleigh.com



MEDICAL OFFICE FOR LEASE

629 N. Nevada Avenue, Colorado Springs, CO 80903



OUR NETWORK IS YOUR EDGE.

All information is from sources deemed reliable and is subject to errors, omissions, change of price, rental, prior sale, and withdrawal without notice. Prospect should carefully verify each item of information contained herein.

Tim Leigh

O: 719.630.2277

C: 719.337.9551

tim@hoffleigh.com

Holly Trinidad

O: 719.630.2277

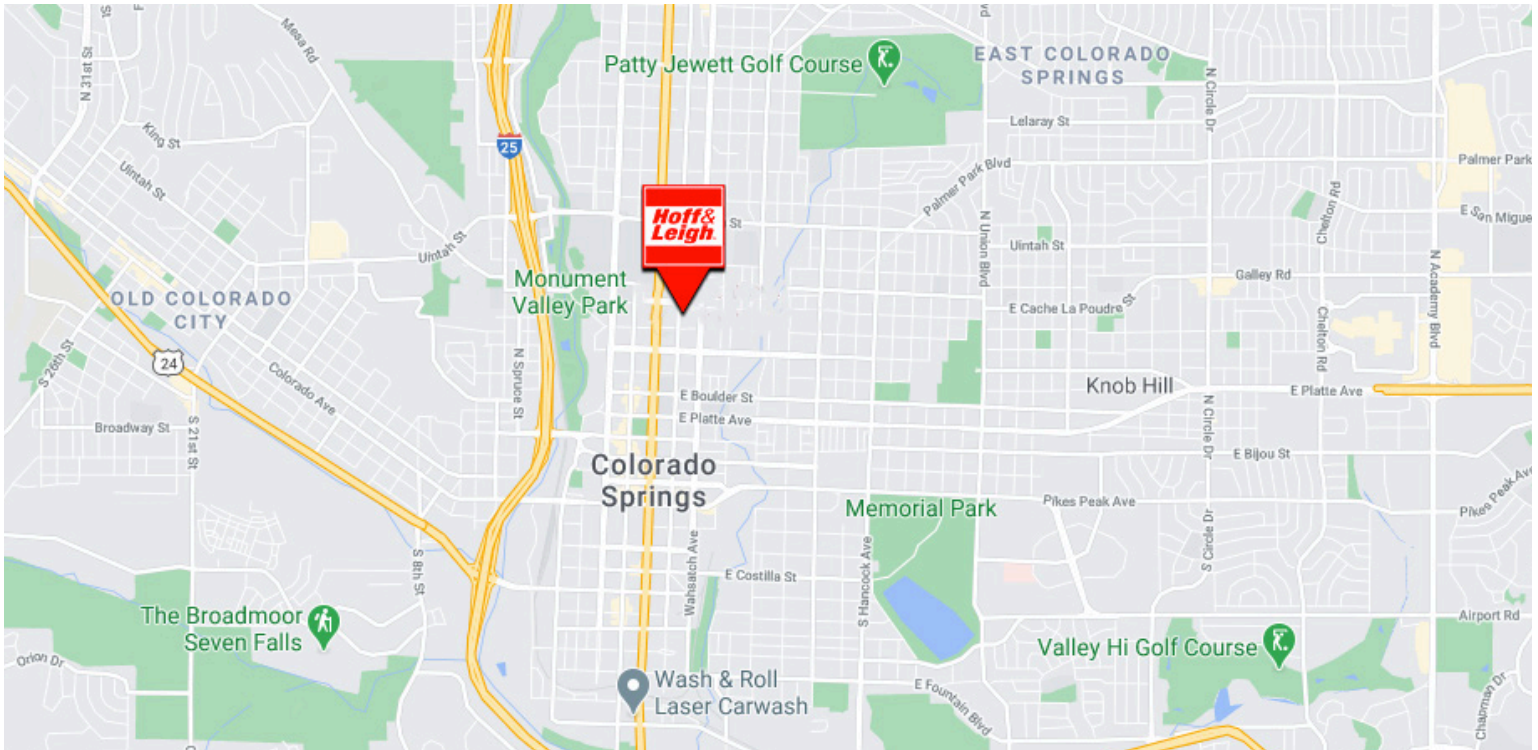
C: 719.337.0999

holly@hoffleigh.com



MEDICAL OFFICE FOR LEASE

629 N. Nevada Avenue, Colorado Springs, CO 80903



OUR NETWORK IS YOUR EDGE.

All information is from sources deemed reliable and is subject to errors, omissions, change of price, rental, prior sale, and withdrawal without notice. Prospect should carefully verify each item of information contained herein.

Tim Leigh

O: 719.630.2277

C: 719.337.9551

tim@hoffleigh.com

Holly Trinidad

O: 719.630.2277

C: 719.337.0999

holly@hoffleigh.com