

# INTERSTATE-71 LAND SITE: LODI OUTLETS WOOSTER EXIT: 40+ ACRES

Avon Lake Road, Orrin & Burbank, Lodi, OH 44254



## OVERVIEW

Lodi Outlets & Wooster Exit -Major Retail /Development Site.

Join National Retailers (Bob Evans, Burger King and Arby's), John Deere, Ag-Pro & Johnny K's Powersports.

Up to 40 acres with frontage on Avon Lake Road and Visibility from I-71.

**29 Acres** - Located at the entrance of Ohio Station Outlets, with American Eagle, Under Armor, Rack Room, etc.

**5.4 Acres** - Signalized corner at entrance of Outlets on Avon Lake Road.

**2 Acres** - At I-71 Lodi Exit and adjacent to Bob Evan.

**5.7 Acres** - Adjacent to Ag-Pro at east entrance of Station Outlets.

## HIGHLIGHTS

- Interstate Visibility
- Ideal Location Between Cleveland, Akron & Columbus
- Up to 40 acres



**Sale Price:**  
Not Disclosed



**Lot Size:**  
2 - 40 Acres



**Zoning:**  
Commercial Business

## OUR NETWORK IS YOUR EDGE

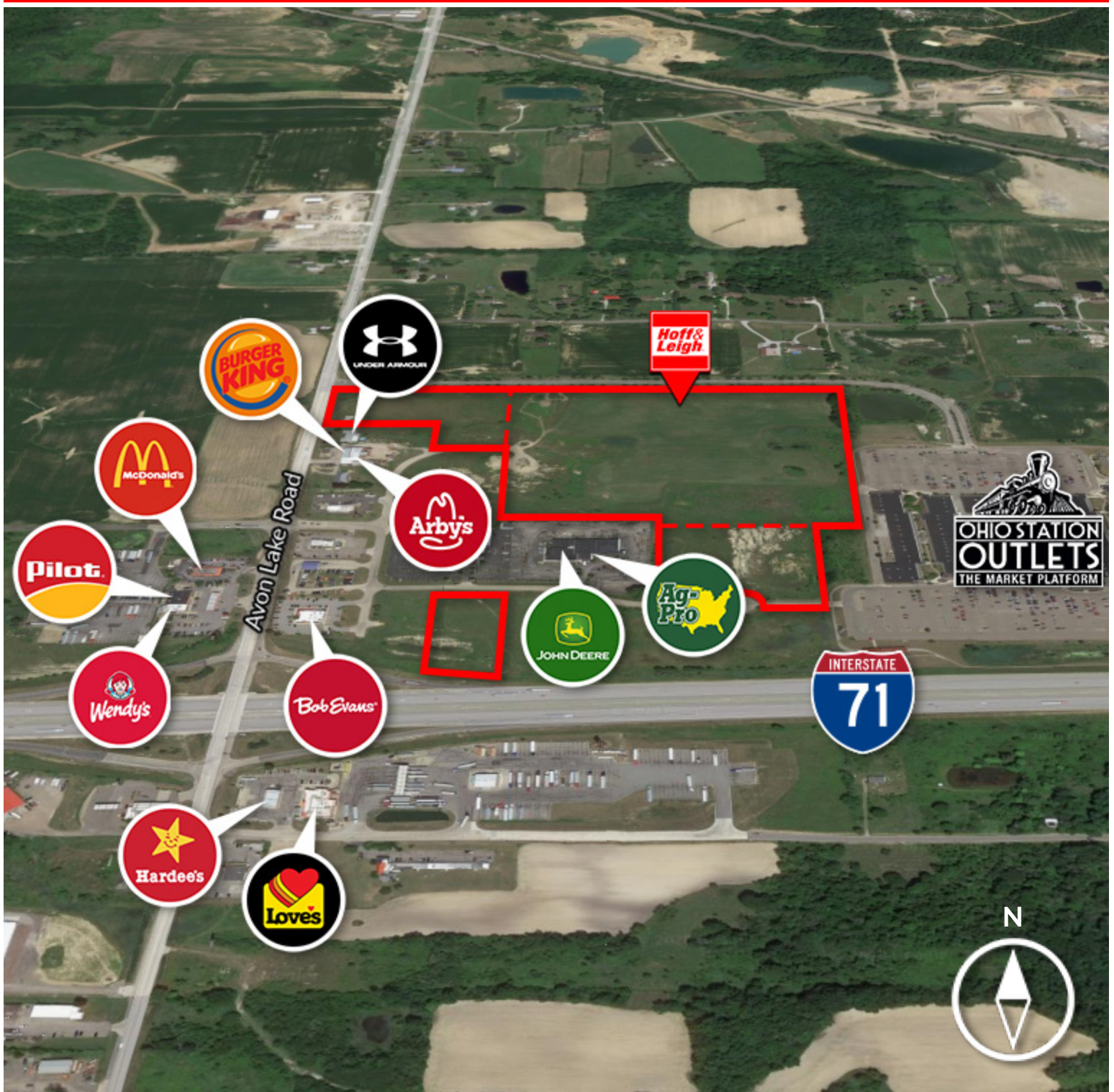
All information is from sources deemed reliable and is subject to errors, omissions, change of price, rental, prior sale, and withdrawal without notice. Prospect should carefully verify each item of information contained herein.

**Joe Zumpano**  
O: 330.940.9360  
C: 330.990.0847  
jzumpano@hoffleigh.com



# INTERSTATE-71 LAND SITE: LODI OUTLETS WOOSTER EXIT: 40+ ACRES

Avon Lake Road, Orrin & Burbank, Lodi, OH 44254



## OUR NETWORK IS YOUR EDGE

All information is from sources deemed reliable and is subject to errors, omissions, change of price, rental, prior sale, and withdrawal without notice. Prospect should carefully verify each item of information contained herein.

**Joe Zumpano**

O: 330.940.9360

C: 330.990.0847

[jzumpano@hoffleigh.com](mailto:jzumpano@hoffleigh.com)