

7520 - 7560 SPACE VILLAGE DRIVE

Colorado Springs, CO 80929



OVERVIEW

7520 – 7560 Space Village Drive is now for sale. This is a total of 7.88 acres that can be divided into separate parcels of 2.20 acres and 5.68 acres respectively. The property is zoned El Paso County Industrial. It is located between Highway 94 and Space Village Drive at the intersection of Marksheffel Road. The asking price is only \$3.25 per square foot.

For a private showing and all the confidential financial details, call Holly Trinidad (719-337-0999) or Tim Leigh (719-337-9551)



Sale Price:

\$1,115,569



Price Per SF:

\$3.25 PSF



Lot Size:

7.88 Acres

OUR NETWORK IS YOUR EDGE.

All information is from sources deemed reliable and is subject to errors, omissions, change of price, rental, prior sale, and withdrawal without notice. Prospect should carefully verify each item of information contained herein.

Holly Trinidad

O: 719.630.2277

C: 719.337.0999

holly@hoffleigh.com

Tim Leigh

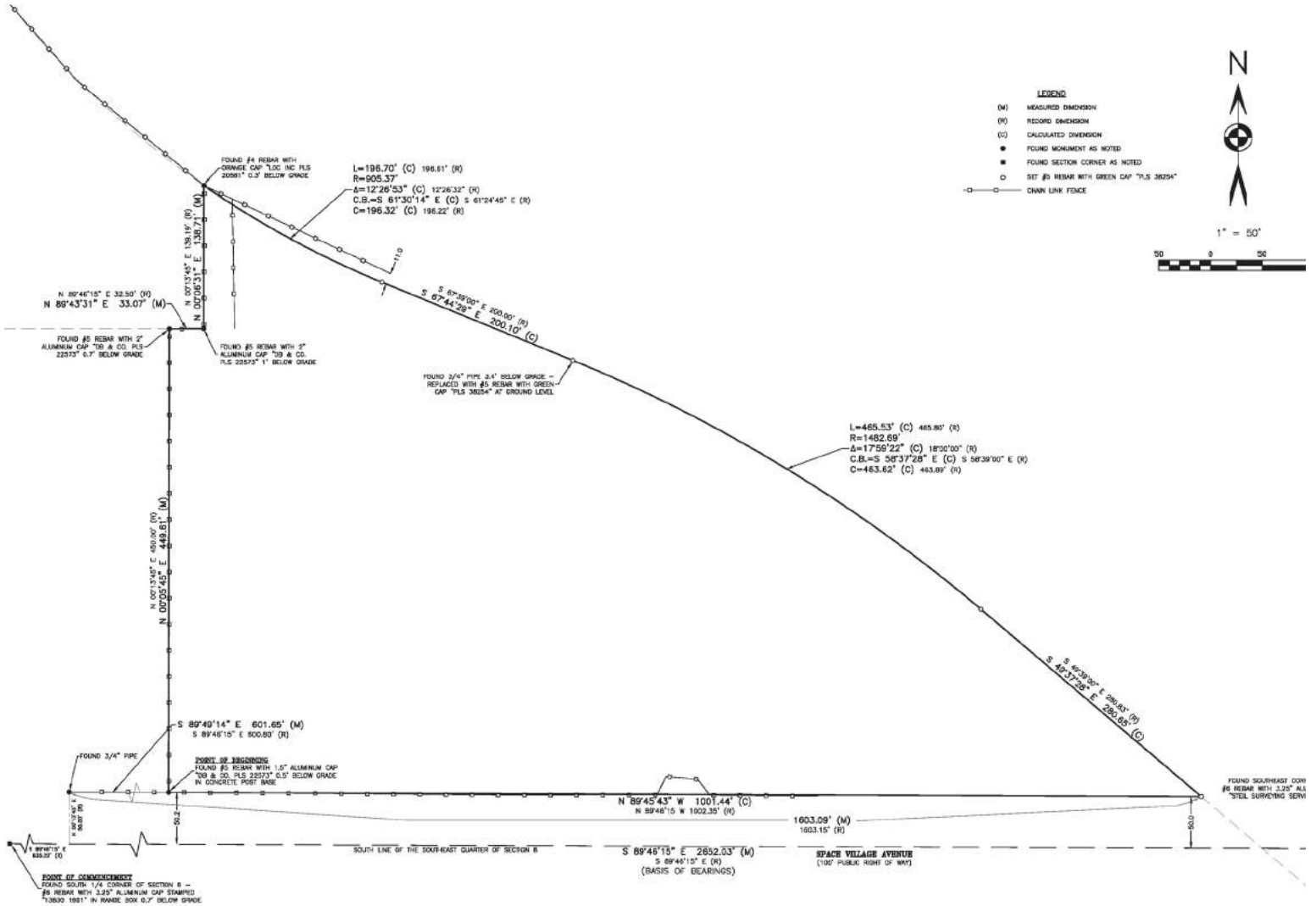
O: 719.630.2277

C: 719.337.9551

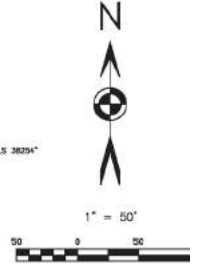
tim@hoffleigh.com

LAND SURVEY PLAT

A PORTION OF THE SOUTHEAST QUARTER OF
SECTION 8, TOWNSHIP 14 SOUTH, RANGE 65 WEST OF THE 6TH P.M.
CITY OF COLORADO SPRINGS, COUNTY OF EL PASO, STATE OF COLORADO



- LEGEND**
- (M) MEASURED DIMENSION
 - (R) RECORD DIMENSION
 - (C) CALCULATED DIMENSION
 - FOUND MONUMENT AS NOTED
 - FOUND SECTION CORNER AS NOTED
 - SET #5 REBAR WITH GREEN CAP "PLS 3825A"
 - CHAIN LINK FENCE



DEPOSITING CERTIFICATION

Deposited this _____ day of _____, A.D. 2016 at _____ o'clock _____ M. in Book _____ of Land Survey Plats, at Page(s) _____, Deposit Number _____ of the records of the Clerk and Recorder's Office of El Paso County, Colorado.

_____ By: Deputy

OUR NETWORK IS YOUR EDGE.

All information is from sources deemed reliable and is subject to errors, omissions, change of price, rental, prior sale, and withdrawal without notice. Prospect should carefully verify each item of information contained herein.

Holly Trinidad

O: 719.630.2277

C: 719.337.0999

holly@hoffleigh.com

Tim Leigh

O: 719.630.2277

C: 719.337.9551

tim@hoffleigh.com