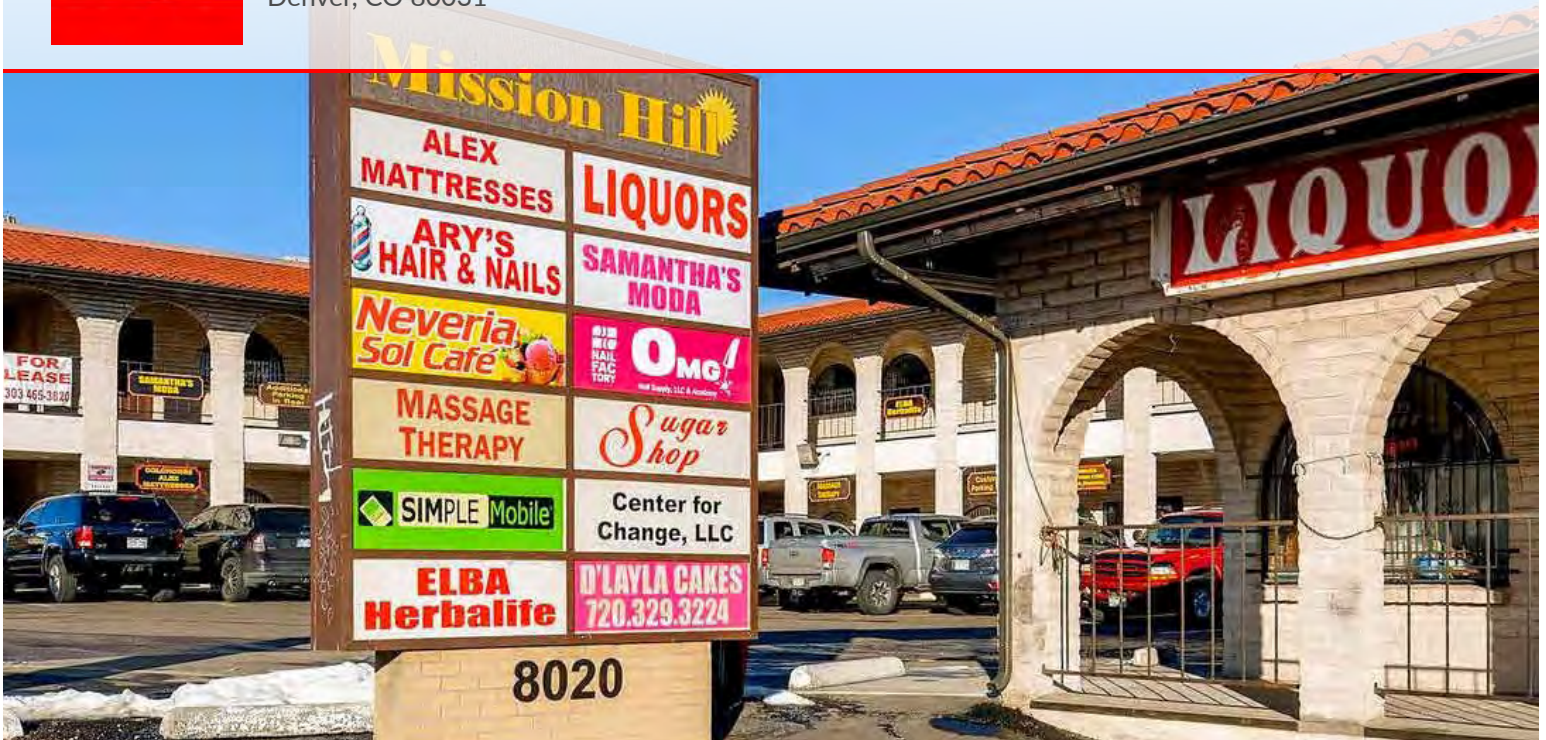




8020 FEDERAL BLVD.

Denver, CO 80031



OVERVIEW

Current NOI: \$157,000. This unique 2 story building offers a mix of retail and office use. Current tenants include an ice cream shop, massage studio, nail salon, liquor store, insurance company, and is currently 93% occupied, leaving one unit left for lease. The current average lease rate is \$14.70/ft... Market rate is between \$16-\$25/ft leaving room to increase cash flow. Sitting next to the Interstate 36 (minutes to Boulder and Denver) this allows investors the opportunity to re-develop at any time in the future. This property is zoned B-1, allowing for almost all retail and office uses and zoning goes up to 65ft high. Along with value-add potential, the owner is willing to add a 9,600sf land parcel sitting (adjacently) behind the property. It is currently paved and used as parking. This parcel is zoned C-1, leaving investors with a variety of commercial development options.

HIGHLIGHTS

- Secured Tenants
- Value-Add Opportunity
- Monument Signage
- Close to Boulder and Denver
- BONUS 9,600sf Undeveloped Lot



Available SF:

10,090 SF



Sale Price:

\$1,900,000



Lot Size:

19,625sf (+9,600sf)



Cap Rate:

8.3%



Year Built

1976



Zoning:

B-1

OUR NETWORK IS YOUR EDGE.

All information is from sources deemed reliable and is subject to errors, omissions, change of price, rental, prior sale, and withdrawal without notice. Prospect should carefully verify each item of information contained herein.

Beau Hershberger

O: 720.572.5187

C: 303.667.2530

bhershberger@hoffleigh.com

Brandon Langiewicz

O: 720.572.5187

C: 715.512.0265

blangiewicz@hoffleigh.com



8020 FEDERAL BLVD.

Denver, CO 80031



OUR NETWORK IS YOUR EDGE.

All information is from sources deemed reliable and is subject to errors, omissions, change of price, rental, prior sale, and withdrawal without notice. Prospect should carefully verify each item of information contained herein.

Beau Hershberger

O: 720.572.5187

C: 303.667.2530

bhershberger@hoffleigh.com

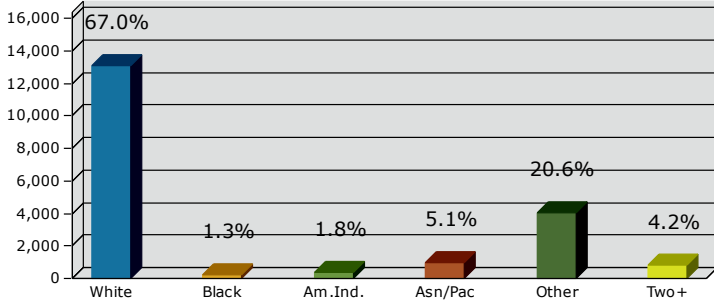
Brandon Langiewicz

O: 720.572.5187

C: 715.512.0265

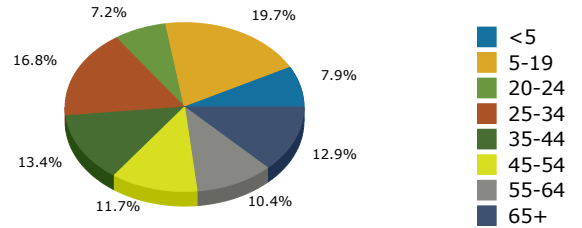
blangiewicz@hoffleigh.com

2017 Population by Race

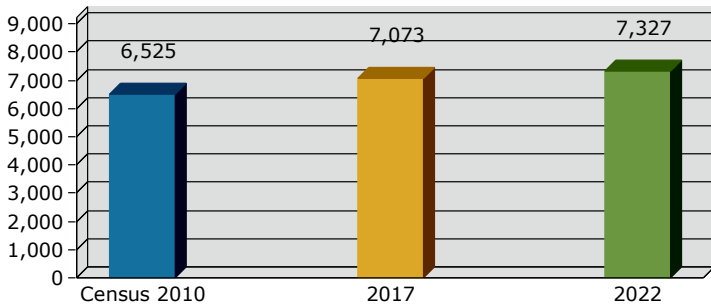


2017 Percent Hispanic Origin: 50.7%

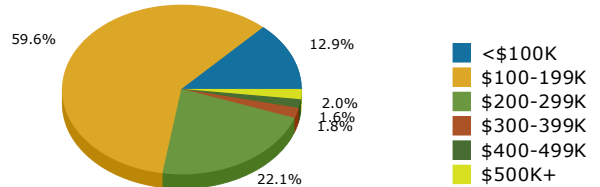
2017 Population by Age



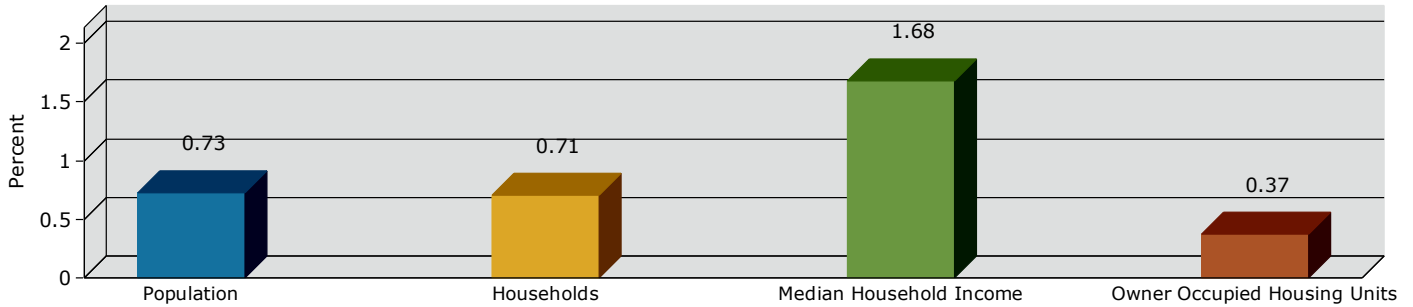
Households



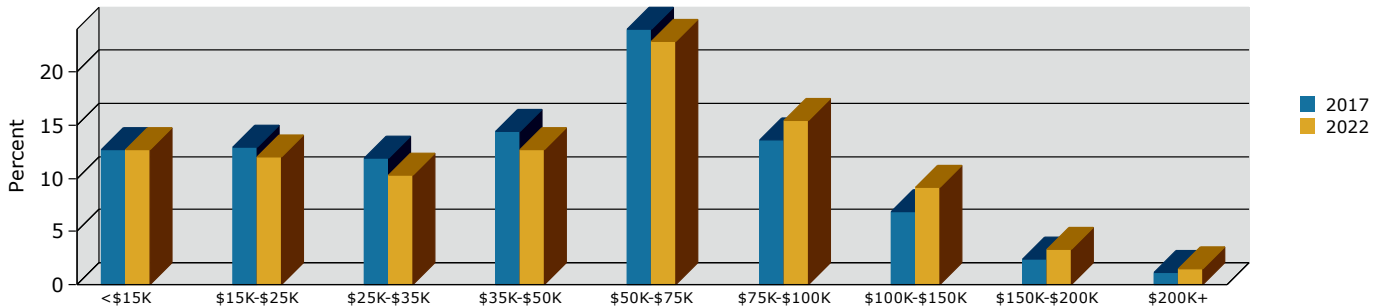
2017 Home Value



2017-2022 Annual Growth Rate



Household Income



OUR NETWORK IS YOUR EDGE.

All information is from sources deemed reliable and is subject to errors, omissions, change of price, rental, prior sale, and withdrawal without notice. Prospect should carefully verify each item of information contained herein.

Beau Hershberger

O: 720.572.5187

C: 303.667.2530

bhershberger@hoffleigh.com

Brandon Langiewicz

O: 720.572.5187

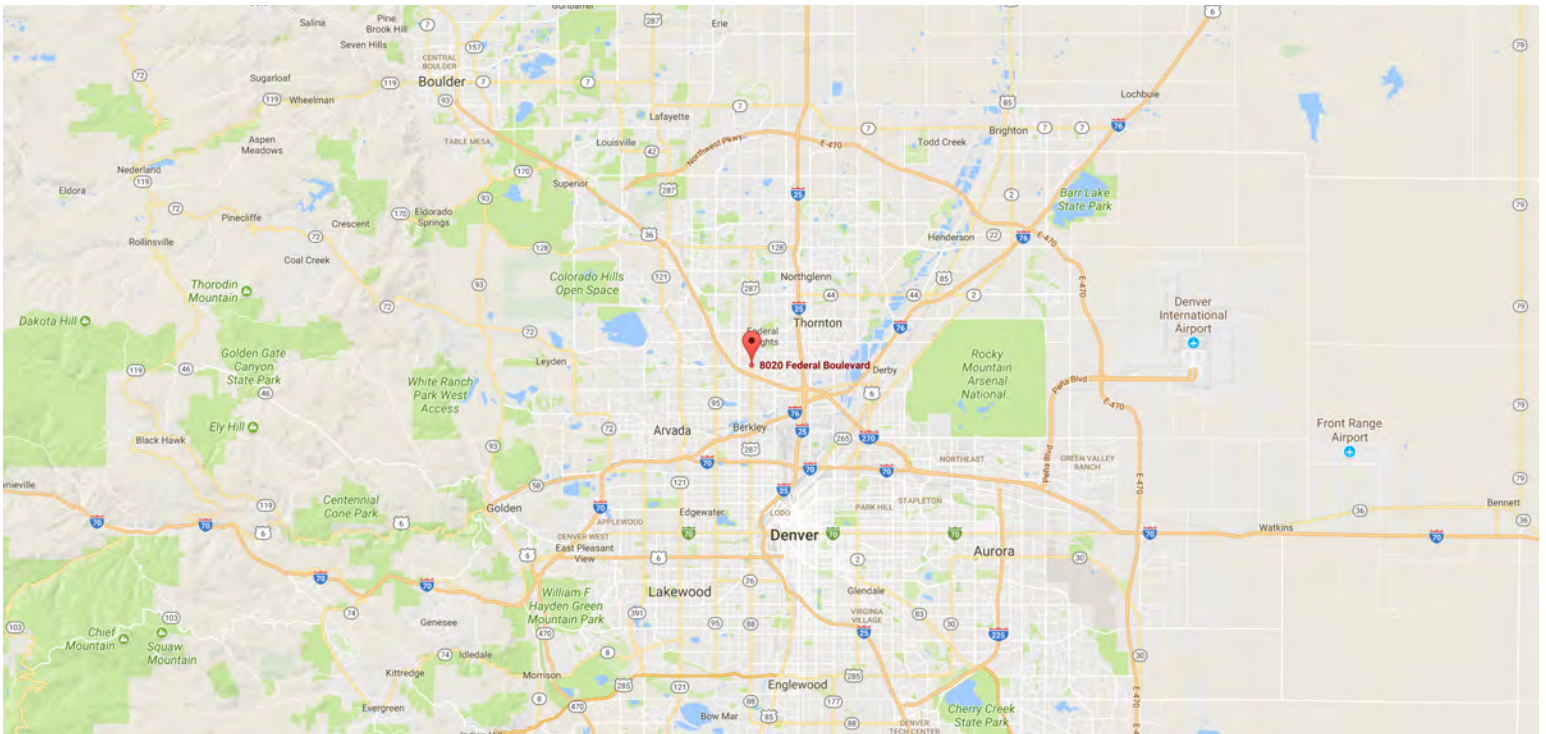
C: 715.512.0265

blangiewicz@hoffleigh.com



8020 FEDERAL BLVD.

Denver, CO 80031



OUR NETWORK IS YOUR EDGE.

All information is from sources deemed reliable and is subject to errors, omissions, change of price, rental, prior sale, and withdrawal without notice. Prospect should carefully verify each item of information contained herein.

Beau Hershberger

O: 720.572.5187

C: 303.667.2530

bhershberger@hoffleigh.com

Brandon Langiewicz

O: 720.572.5187

C: 715.512.0265

blangiewicz@hoffleigh.com