



# CORNER BUILDING FOR SALE OR LEASE

11800 Madison Avenue, Lakewood, OH 44107



## PROPERTY OVERVIEW

Standalone corner building/lot with tons of parking and expansion potential. Includes multiple parcels. Former Hertz building available again for sale or lease. Great owner user opportunity and/or corner development site, with additional adjacent land. Second floor leased - income producing. Located next to dense retail market, Target, Home Depot, Giant Eagle etc.

## HIGHLIGHTS

- Ample Parking
- Standalone Building
- Adjacent Commercial lot
- Multiple Parcels
- Electronic Sign on Property!
- FLEX SPACE



**Sale Price:**

\$650,000



**Lease Rate:**

3,500/month (MG)



**Building Size:**

6,690 SF



**Lot Size:**

.75 Acres



**Zoning:**

General Retail

## OUR NETWORK IS YOUR EDGE.

All information is from sources deemed reliable and is subject to errors, omissions, change of price, rental, prior sale, and withdrawal without notice. Prospect should carefully verify each item of information contained herein.

**Joe Zumpano**  
O: 330.940.9360  
C: 330.990.0847  
jzumpano@hoffleigh.com



# CORNER BUILDING FOR SALE OR LEASE

11800 Madison Avenue, Lakewood, OH 44107



## OUR NETWORK IS YOUR EDGE.

All information is from sources deemed reliable and is subject to errors, omissions, change of price, rental, prior sale, and withdrawal without notice. Prospect should carefully verify each item of information contained herein.

**Joe Zumpano**

O: 330.940.9360

C: 330.990.0847

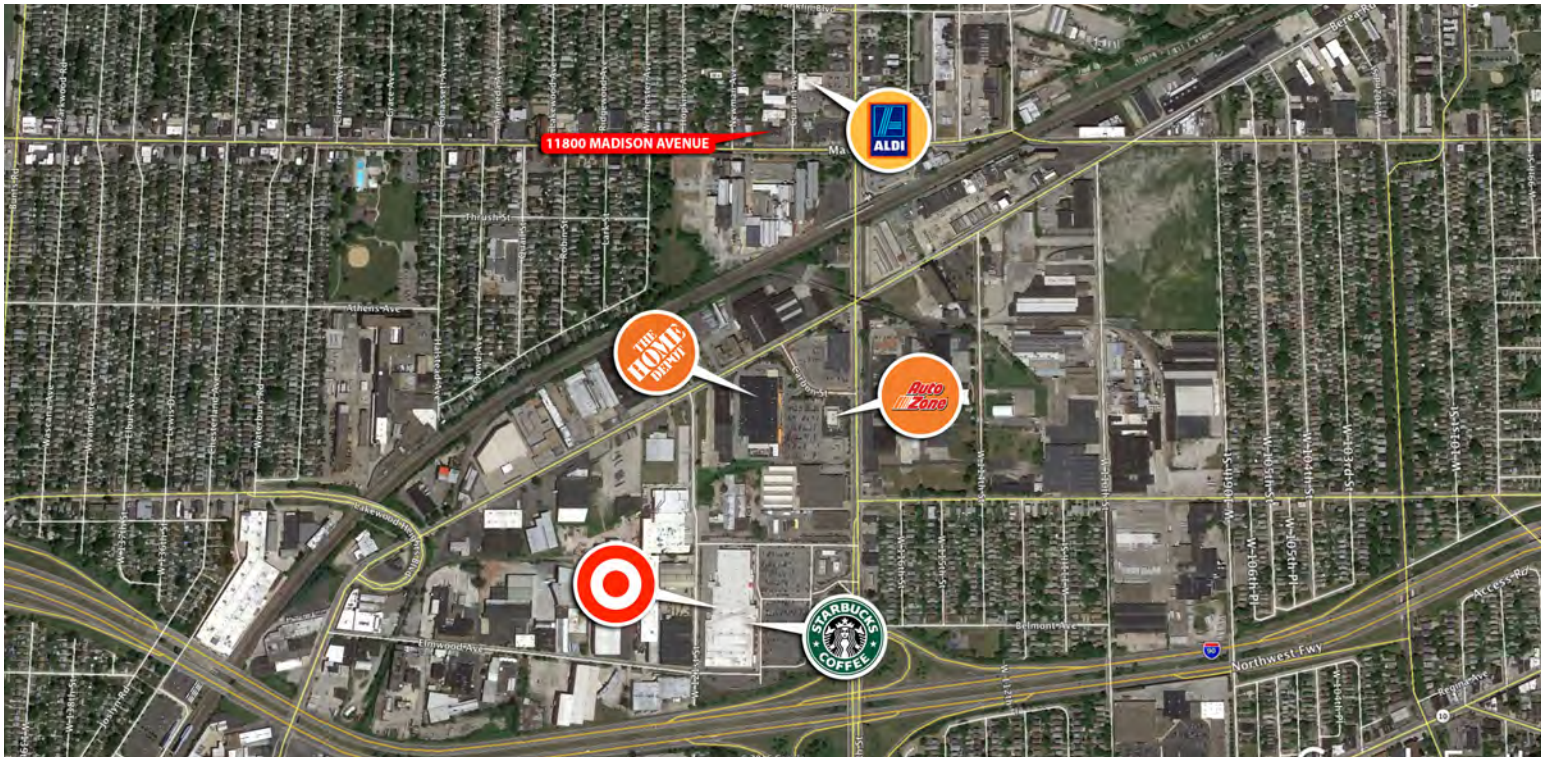
[jzumpano@hoffleigh.com](mailto:jzumpano@hoffleigh.com)





# CORNER BUILDING FOR SALE OR LEASE

11800 Madison Avenue, Lakewood, OH 44107



## OUR NETWORK IS YOUR EDGE.

All information is from sources deemed reliable and is subject to errors, omissions, change of price, rental, prior sale, and withdrawal without notice. Prospect should carefully verify each item of information contained herein.

**Joe Zumpano**

O: 330.940.9360

C: 330.990.0847

[jzumpano@hoffleigh.com](mailto:jzumpano@hoffleigh.com)