



## OFFERING SUMMARY

Sale Price:	\$3,495,000
Lot Size:	29.03 Acres
Building Size:	265,000 SF
Zoning:	U-1
Price / SF:	\$13.19
Price / Acre:	\$120,393

## PROPERTY OVERVIEW

Akron Baptist Temple Campus is available for purchase. This incredibly well-maintained property consists of approximately 265,000 SF and sits on just over 29 acres, right off of SR 224 and I-277 on Manchester Road (S.R. 93). This property can be re-zoned for many uses including potential retail and commercial uses. This is a wonderful opportunity for re-purposing the property for an alternative use or it could also be a perfect opportunity for a developer to acquire 29 acres of land with highway frontage to re-develop the property.

## PROPERTY HIGHLIGHTS

- Phenomenal Value for Re-Purpose or Re-Development
- Beautifully Maintained Facility with over 500 parking spaces
- Several large auditoriums and many classrooms
- 29 Acres that can be Re-Developed

## Our Network is Your Edge.

All information is from sources deemed reliable and is subject to errors, omissions, change of price, rental, prior sale, and withdrawal without notice. Prospect should carefully verify each item of information contained herein.

**Ed Jesson**

O: 330.940.9360

C: 330.760.4494

EJesson@HoffLeigh.com

**John January**

O: 330.940.9360

C: 330.903.5867

JJanuary@HoffLeigh.com



# 2324 Manchester Road

Akron, OH 44306



## Our Network is Your Edge.

All information is from sources deemed reliable and is subject to errors, omissions, change of price, rental, prior sale, and withdrawal without notice. Prospect should carefully verify each item of information contained herein.

**Ed Jesson**

O: 330.940.9360

C: 330.760.4494

EJesson@HoffLeigh.com

**John January**

O: 330.940.9360

C: 330.903.5867

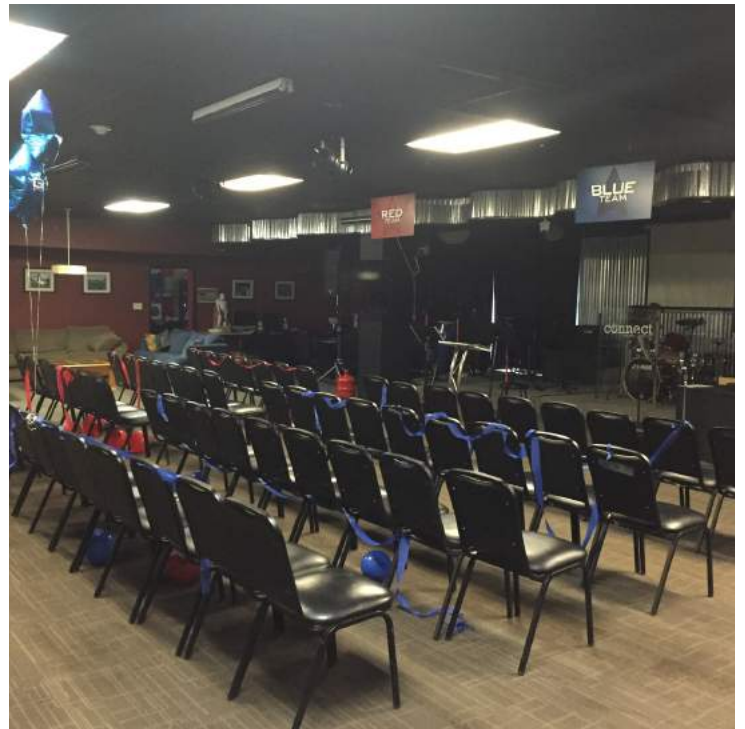
JJanuary@HoffLeigh.com





# 2324 Manchester Road

Akron, OH 44306



## Our Network is Your Edge.

All information is from sources deemed reliable and is subject to errors, omissions, change of price, rental, prior sale, and withdrawal without notice. Prospect should carefully verify each item of information contained herein.

**Ed Jesson**

O: 330.940.9360

C: 330.760.4494

EJesson@HoffLeigh.com

**John January**

O: 330.940.9360

C: 330.903.5867

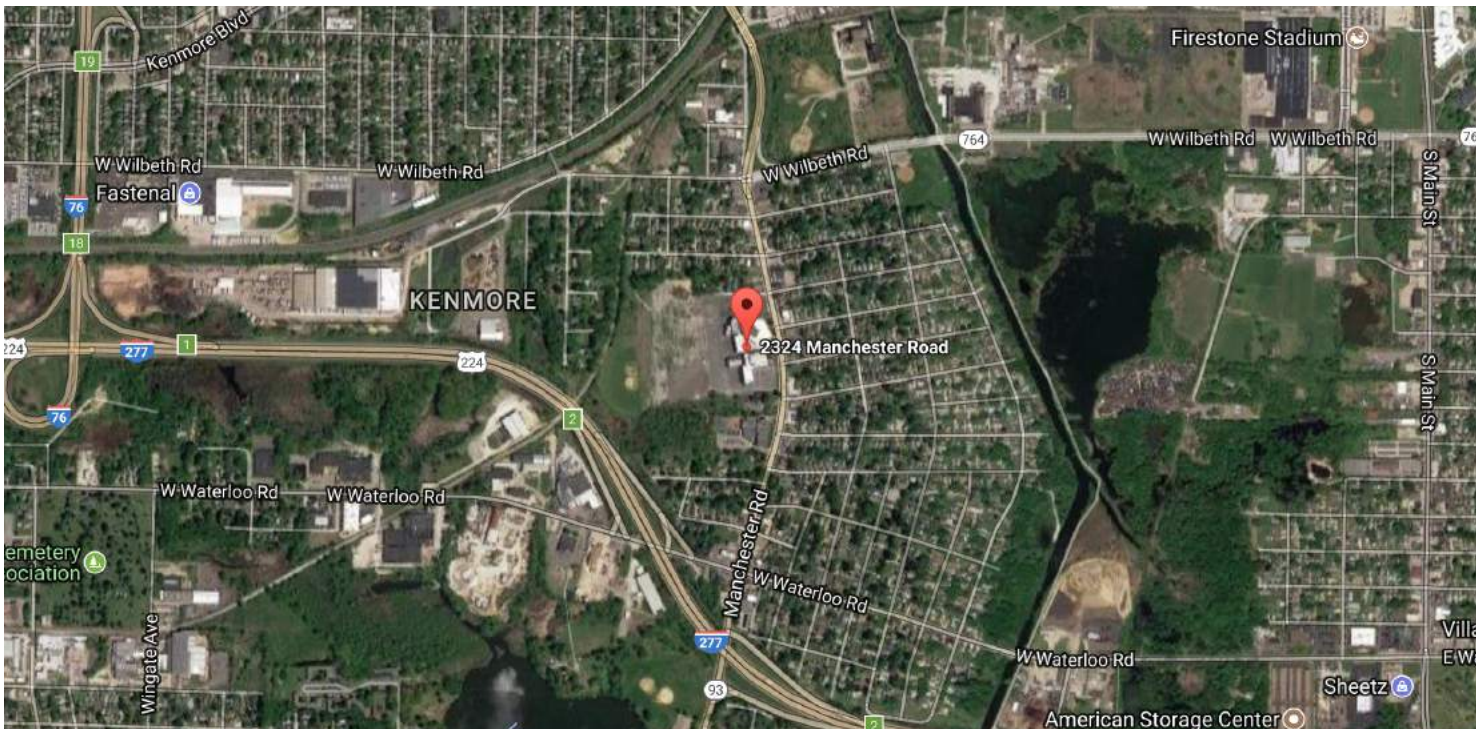
JJanuary@HoffLeigh.com





# 2324 Manchester Road

Akron, OH 44306



Our Network is Your Edge.

All information is from sources deemed reliable and is subject to errors, omissions, change of price, rental, prior sale, and withdrawal without notice. Prospect should carefully verify each item of information contained herein.

**Ed Jesson**

O: 330.940.9360

C: 330.760.4494

EJesson@HoffLeigh.com

**John January**

O: 330.940.9360

C: 330.903.5867

JJanuary@HoffLeigh.com